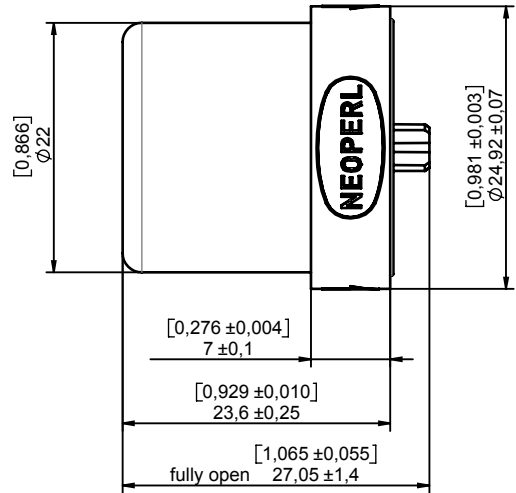
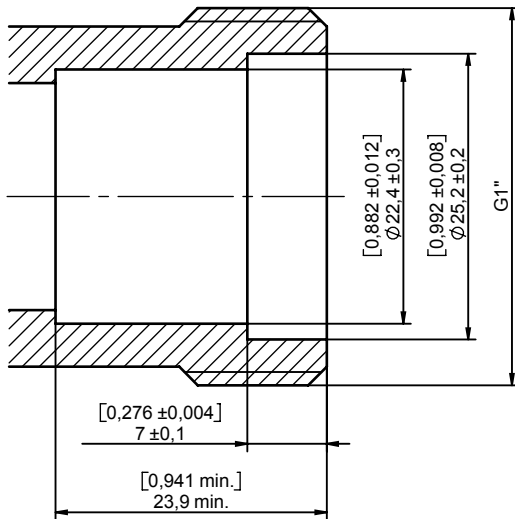


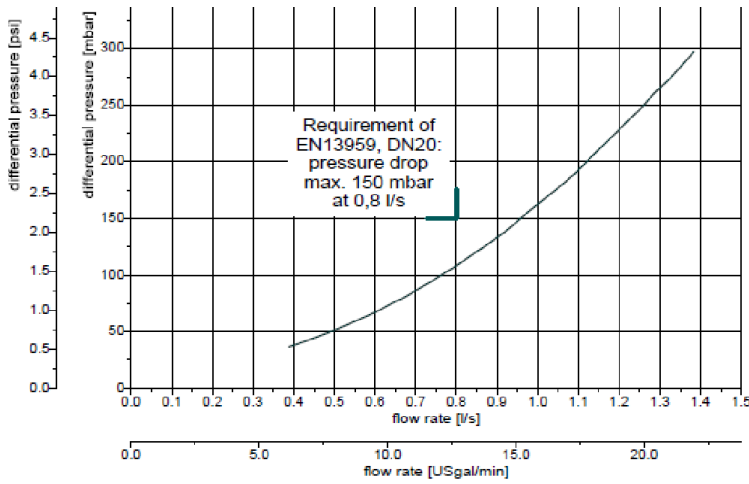
Weitergabe sowie Vervielfältigung dieser Unterlage, Verwertung und Mitteilung ihres Inhalts nicht gestattet, soweit nicht ausdrücklich zugestanden. Zuwiderhandlungen verpflichten zu Schadenersatz. Alle Rechte für den Fall der Patenterteilung oder Gebrauchsmuster-Eintragung vorbehalten.

**Check valve, family E, type B, DN20, PN10, acoustic group I, acc. EN 13959, WM20/DN20**



Dimensions in mm [inch]

Max. operating temperature 65°C,  
max. 1h at 90°C




**List of Material:**

- O-Ring NBR
- Spring Stainless Steel
- Lip Seal NBR
- Plunger POM
- Guidance POM
- Ring Cap POM
- Housing POM



Copying of this document, and giving it to others and the use or communication of the contents thereof, are forbidden without express authority. Offenders are liable to the payment of damages. All rights are reserved in the event of the grant of a patent or the registration of a utility model or design.

<b>NEOPERL Group</b>				
	Date	Name		
Drawn:	Jan. 2012	FE308		<b>Title:</b> <b>check valve</b> <b>WV20/DN20</b>
Appr.:	Jan. 2012	FE183 / FE182		
Scale:				<b>Part-No.:</b> <b>31.4222.00000</b>
Format: A4 / US Letter	Page 1 of 1			
<b>Rev.</b>			 <b>flow, stop and go®</b>	
Date:				