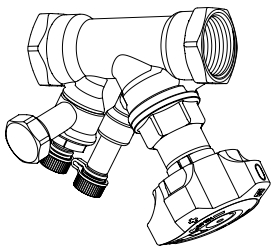
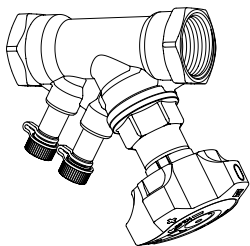


STAD

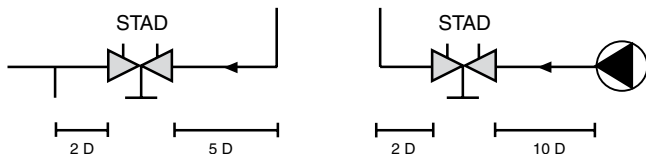


Min. and max. temperature: $-20^{\circ}\text{C} - +120^{\circ}\text{C}$

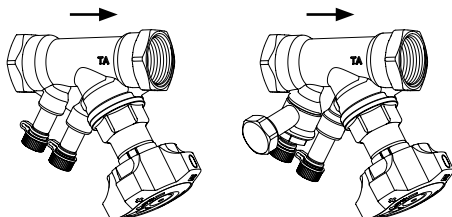
Pressure class: PN 25

Installation in accordance with the Plumbing Code of Australia.

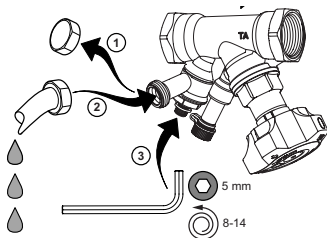
Recommended installation



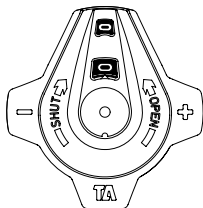
Recommended direction of flow for best accuracy



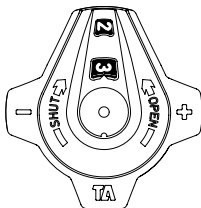
Drain (valves with draining)



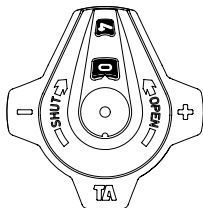
1.



2.



3.



4.

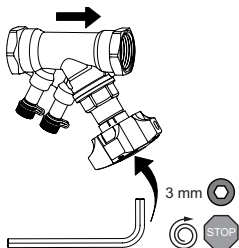


Fig. 1. Valve closed

Fig. 2. Opened 2.3 turns

Fig. 3. Fully open valve

Fig. 4. Locking of setting

Presetting

The presetting of a valve for a certain pressure drop (e.g. corresponding to the presetting position 2.3) should be carried out as follows:

1. Close the valve fully (Fig. 1).
2. Open the valve 2.3 turns (Fig. 2).
3. Using a 3 mm Allen key, turn the inner spindle clockwise to its end position (Fig. 4).
4. The valve is now preset.

A pressure drop diagram is available for each valve size, showing the pressure drop curves for various settings and flows.

We reserve the right to introduce technical alterations without prior notice.