

# DC300 rod-type door closer

For single-leaf doors in size EN 3-6 (1,400 mm), optionally with closing delay

## Product description

- Rack and pinion closer with link arm L190
- Certified in compliance with EN 1154, size 3-6
- Suitable for fire and smoke protection doors
- For single action doors up to 1400 mm wide

## Overview of Advantages

- Can be used with concealed mounting plate, suitable for fire and smoke protection doors
- Can be used for left and right-handed doors
- Axis height adjustable up to 14 mm
- Closing speed, latching speed and backcheck adjustable via front facing regulating valves
- Thermodynamic valves for consistent performance
- Variable adjustable closing force
- Opening angle up to 180°
- Effective backcheck and latching speed range adjustable
- Accessories for established installation types
- Large range of applications
- Standard colours: silver EV1; white, similar to RAL9016; brown, similar to RAL8014; black, similar to RAL9005
- Customised finishes available on request

## Note

- Link arm must be ordered separately

## Characteristics for hold open link arm L191

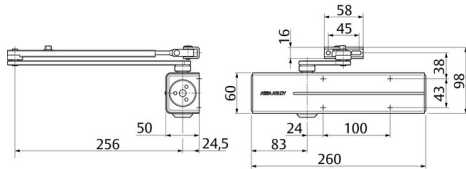
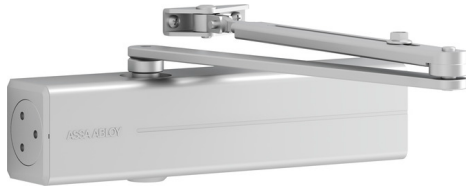
- Hold-open angle adjustable up to 150°
- Hold-open mode can be enabled and disabled as required
- Same installation as link arm
- Cannot be used with fire and smoke protection doors

## The advantages at a glance

| Customer segment | Advantages                                                                                                                                                                                                                                                                                                                                                                                                                                                                                                           |
|------------------|----------------------------------------------------------------------------------------------------------------------------------------------------------------------------------------------------------------------------------------------------------------------------------------------------------------------------------------------------------------------------------------------------------------------------------------------------------------------------------------------------------------------|
| User             | No reworking of door element for upgrade to tandem Largely unaffected by temperature fluctuations because of thermodynamic valves Easier door opening and improved accessibility due to rapidly decreasing torque Backcheck feature offers optimum protection for doors and walls                                                                                                                                                                                                                                    |
| Builders         | One drilling template overall Standard door closers DC300 can be used with tandem mounting plates Quick and easy installation Quickly and easily adjustable Suitable for left and right handed doors, in both door and frame mounted applications Easily retrofitted with minimal rework One drilling template overall Adjustable to nearly all door and frame types Quick and easy installation Quickly and easily adjustable Suitable for left and right handed doors, in both door and frame mounted applications |
| Trade            | Reduced inventory costs due to modular product range Reduced inventory costs due to modular product range One single product suitable for a large variety of mounting positions Complementary accessories available for the whole product range                                                                                                                                                                                                                                                                      |
| Project planners | Extensive range of uses, also for extra large and heavy doors Extensive range of uses: Fire and smoke protection doors as well as standard doors Modern design Compact design Fulfills barrier-free building requirements Same dimensions and design with and without mounting plate Comprehensive functions, standard and optional                                                                                                                                                                                  |

## Technical data

|                         |                           |
|-------------------------|---------------------------|
| Closing force           | EN 3-6                    |
| Door width up to        | 1400 mm                   |
| Suitable for fire doors | Yes                       |
| DIN-direction           | Left / right handed       |
| Closing speed           | Variable between 180°-15° |
| Latching speed          | Variable between 15°-0°   |



# DC300 rod- type door closer

For single-leaf doors in size EN 3-6 (1,400 mm), optionally with closing delay

|                                               |                                                  |
|-----------------------------------------------|--------------------------------------------------|
| Backcheck effect                              | Variable above 75°                               |
| Delayed closing                               | No                                               |
| Hold-open mode (with hold-open link arm L191) | Adjustable 75°-150°, can be enabled and disabled |
| CE marking for building products              | Yes                                              |
| Certified in compliance with                  | EN 1154                                          |
| Length                                        | 260 mm                                           |
| Height                                        | 60 mm                                            |
| Depth                                         | 50 mm                                            |
| Weight                                        | 1.9 kg                                           |
| Colour                                        | Silver EV1                                       |
| <a href="#">Article number</a>                | DC300-----DEV1-                                  |
| <a href="#">EAN</a>                           | 4042203687103                                    |