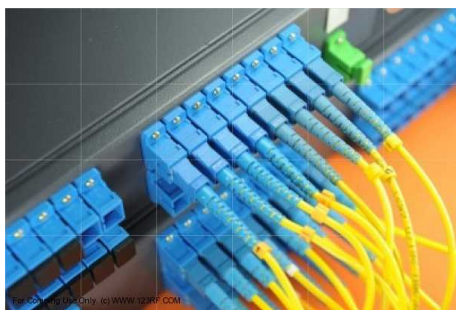


IET

Insertion Extraction Tool

- The IET tool is designed to easily insert and extract optical connectors in high density patch panels
- Works with most common optical connectors, including LC connectors
- Tool tip is designed to insure a positive grip and avoiding slipping
- Spring loaded tool action and ergonomic grips allow easy, comfortable and precision left or right hand operation.



How it works



Type	Part nr	Size	Weight
IET	80860	223 x 70 x 19 mm	99 g