

Product Data Sheet

iDim Sense (System & Standalone)

iDim

315

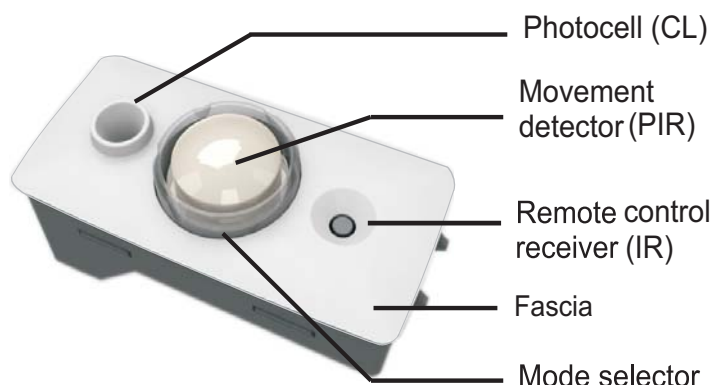
The iDim Sense is a luminaire based DALI sensor. It combines a movement detector (PIR), remote control receiver (IR) and photo-cell (CL) in one enclosure and a manual mode selector which allows the user to easily select one of the 6 out-of-box application modes. It also benefits from additional system functionality when used with DIGIDIM Toolbox and Helvar 910/920 Router systems.

Key Features

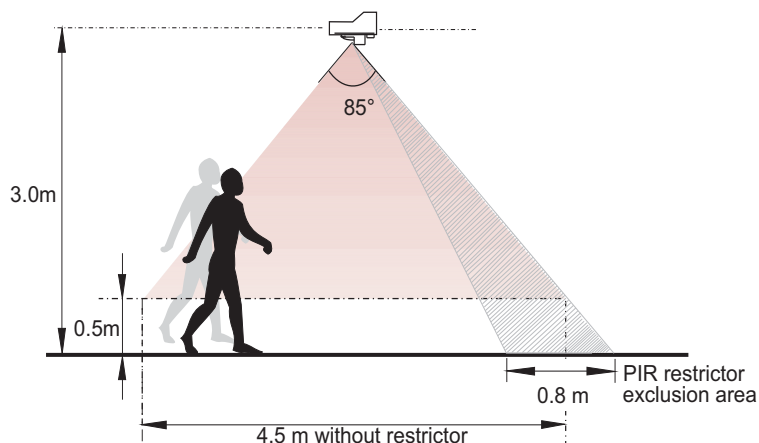
- PIR, Constant Light and Infrared control
- Easy to select application modes
- Clip-on fascia in different colours
- Clip-on PIR Restrictor
- Mode selector with LED feedback
- Network compatible with DIGIDIM Toolbox and Helvar 910/920 Router systems

Installation Notes

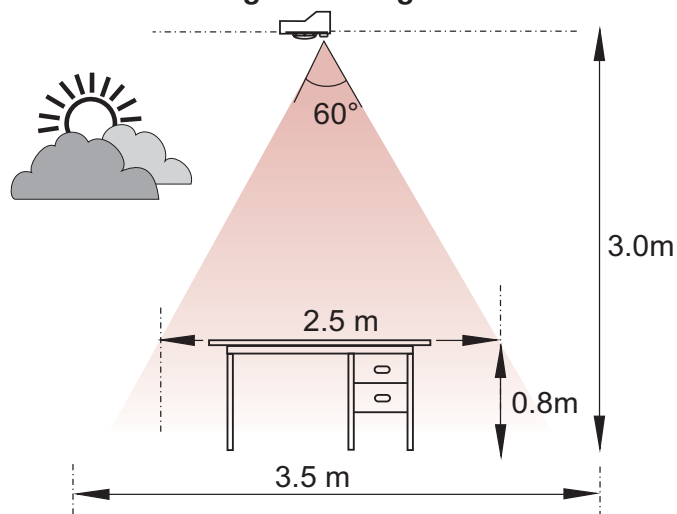
- Multiple mounting options:
 - 1) Mount from outside luminaire. "Click fit"
 - 2) Mount from inside luminaire. "Bracket fit"
 - 3) Combined with a louvre adapter. "Adapter fit"
- Isolate the mains supply before installation
- DALI cabling must be 230 VAC mains rated



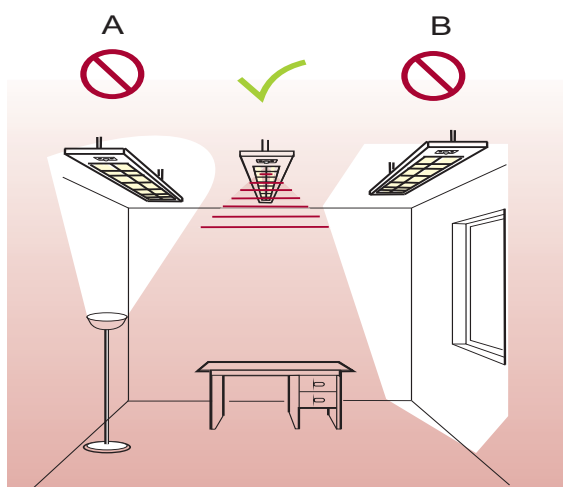
PIR Coverage



Constant Light Coverage



Recommended Mounting Location



A) Do not mount sensor in direct line of artificial light sources e.g. lamps, uplighters.

B) Do not mount sensor in direct sunlight

Helvar
www.helvar.com

Product Data Sheet

iDim Sense (System & Standalone)

iDim

315

Connections

- DALI: 0.5 to 1.5 mm² solid, flexible or stranded, stripped 9 mm
- iDim Solo: RJ Style 4P4C crossover (max. length 3 m) (accessory cable available)

Note: All cables should be mains rated.

Power

- DALI Consumption: 10 mA

Operating Conditions

- Relative Humidity: 90% max, non-condensing
- Storage Temperature: -25°C ... +75°C
- Operating Temperature: 10°C ... +50°C
- Lux Level: 5 – 5000 lx

Mechanical Data

- Housing: Non flammable ABS (UL94-V0 & UV resistant)
- Dimensions: 55 mm (L) x 25 mm (W) x 20 mm (D) (without Fascia)
58 mm (L) x 28.5 mm (W) x 21.4 mm (D) (with Fascia)
- Weight: 15 g

Recommended Luminaire Thickness: 0.6 mm to 2.4 mm

- Colour - iDim Sense: White (RAL 9016)
- iDim Fascia: White (RAL 9016) or Grey (RAL 9006)

Note: Contact Helvar for additional Fascia colour options

Conformity & Standards

- DALI: According to DALI standard, with Helvar extensions

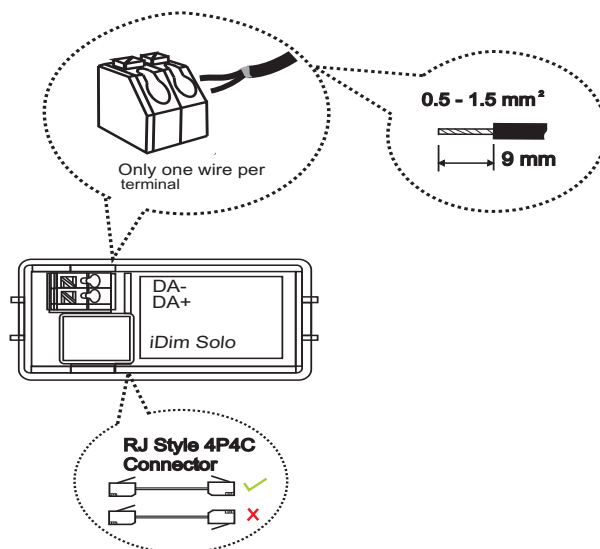
EMC

- Emission: EN 55 015
- Immunity: EN 61 547
- Safety: EN 61 347-2-11
- Isolation: Double isolated

Environment

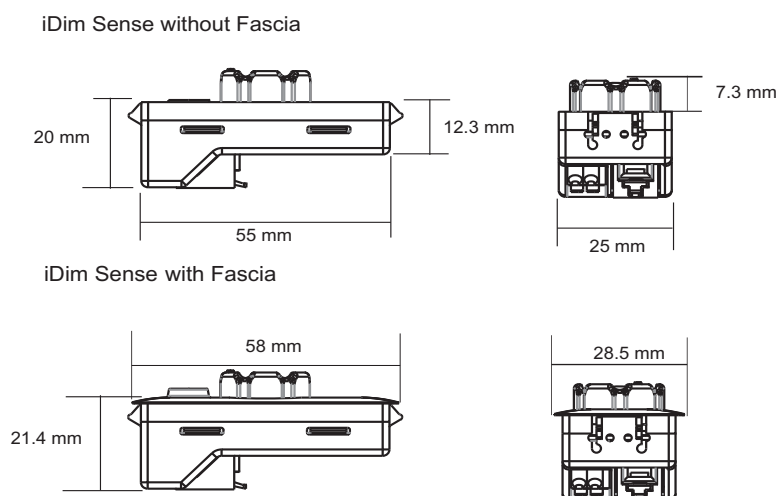
Complies with WEEE and RoHS directives

Connections

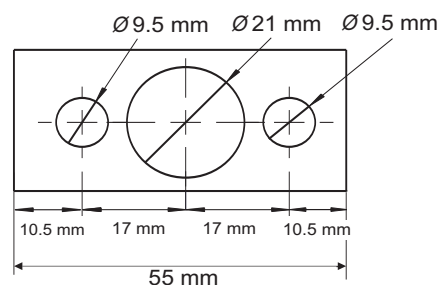


Note: To remove DALI wiring, always press down on the push wire connector clips

Dimensions



Movement detector (PIR), remote control receiver (IR) and photocell (CL) dimensions



Helvar
www.helvar.com