



**EMPOWERING
SPACES TO
ENSURE AVAILABILITY**

IT INFRASTRUCTURE

Professional energy management

**BACH
MANN**
We power your life.



WHAT THE DIGITAL WORLD COUNTS ON

Data centres are the silent architects of our everyday digital lives. While we are shopping online, working from home, streaming series or controlling smart thermostats, highly available IT infrastructures are running in the background. They store, analyse, calculate and distribute data

around the clock. Every digital advancement presents data centres with new challenges today – and even greater ones tomorrow: Technologies such as 6G, quantum computing and autonomous systems require powerful, future-proof IT infrastructures.

CONTENTS

Where data comes to life	04
Energy meets intelligence	06
BASIC PDUs	08
19" BASIC 1HE	12
BASIC 1HE	13
Intelligent PDUs	14
Using electricity intelligently	16
BlueNet	18
BlueNet overview	20
BN0500 Local Metered	22
BN ESSENTIAL Metered	24
BN PRO	28
BN PRO Series	30
Technology modules	32
BN PRO Metered	38
BN PRO Metered+	40
BN PRO Switched / Switched+	42
BN PRO accessories	46
RNX UPDU	48
Project consulting	50
About us	52



data center

◀ 60 - 80

WHERE DATA COMES TO LIFE

Reliable power distribution is the foundation of any future-proof data centre. Power Distribution Units have long outgrown their role as simple socket strips - today, they form the intelligent nervous system of the rack. They precisely record energy consumption, safeguard the power supply, recognise faults at an early stage and even enable individual components to be restarted remotely.

In practice, this means more transparency, more security, more efficiency and a clear advantage in areas such as sustainability, monitoring and legally compliant documentation.

This makes it all the more important to have solutions that not only fulfil these requirements, but also actively shape them through innovation, adaptability and technical precision.

ENERGY MEETS INTELLIGENCE

Power distribution that makes IT infrastructure efficient



TER ENSURE AVAILABILITY MANAGE

Our Power Distribution Units are the centrepiece of sustainable and scalable energy management in the rack. Developed in Germany, they represent quality, technological expertise and long-term reliability. As a specialist in intelligent power distribution, we offer customised configurations – from country-specific outlets and modular equipment to special customer-specific solutions, even in small quantities.

A special plus: our software "Made in Europe". It provides full transparency directly in the rack, delivers precise live data, supports analyses and enables intelligent, predictive monitoring. In this way, we create the basis for predictive fault detection, reliable consumption analyses and standard-compliant energy management. Technologies such as residual current monitoring (RCM) not only make our solutions safer, but also more economical. This is because continuous monitoring – including potential fault and leakage currents – means that regular shutdowns within the framework of retesting can be avoided – a key advantage for 24/7 infrastructures.

The BACHMANN range extends from passive to fully networked intelligent PDUs, from standardised solutions to modular systems. We place particular importance to details, such as overvoltage protection with signalling contact that can be replaced during operation and residual current monitoring with the sensor from the market leader, which ensures precise and reliable data.

BACHMANN stands for sophisticated power distribution that increases operational reliability, makes efficiency measurable and actively supports legal requirements such as the German Energy Efficiency Act (Energieeffizienzgesetz).

BASIC PDUs

The strong backbone of the power distribution



BASIC PDUs

High-quality and reliable power distribution



**OTHER VERSIONS
AVAILABLE ON REQUEST**



19" BASIC 1HE



BASIC 1HE

FEATURES

- Country-specific socket types
- High-quality aluminium profile
- Various technology modules
- Flexible and easy mounting with mounting brackets
- C13/C19 with factory compatibility for V-Lock, P-Lock, TwyLock®

BASIC PDUs are ideal partners for systems that need to run reliably - unobtrusively, but decisively, for years to come. Their clear design, robust mechanics and flexible mounting make them a convincing choice in media control, industrial applications, and network distribution alike.

For applications that do not require energy monitoring, the BASIC PDU is a technically reliable and price-conscious choice for power distribution in the rack. It supplies connected devices reliably via a robust aluminium profile and high-quality components. The focus is on a space-saving and easy-to-install solution.

As with the BN ESSENTIAL product line, numerous technology modules from the BACHMANN modular system can also be individually integrated into the BASIC PDU. These include miniature circuit breakers and country-specific socket types. This results in customised solutions for a wide range of applications. The BASIC PDU is therefore a solid choice when it comes to reliable power supply and high integration flexibility – without additional work for monitoring or management.



Wide range of socket types

19" BASIC 1HE

#	C13	C19	🌐	☺	📶	🏠	Switch	Overvoltage protection	Mains and frequency filters	Thermal/micro fuse (A)	30mA residual current device	Current per phase (A)	Rated voltage (V)	Cable length	Plug
800.2284	12									10		10	230	2	C14
333.616	12											16	230	2	CEE 7/7
333.830	12											16	230	-	Connection terminal
333.815		8										16	230	2	C20
800.2332	8	3										16	230	2	C20
333.400			8				•					16	230	2	CEE 7/7
333.401				9								16	230	2	CEE 7/7
333.402			6					•	•			16	230	2	CEE 7/7
333.404			8					•				16	230	2	CEE 7/7
333.405			7				•	•				16	230	2	CEE 7/7
333.406			7					•				16	230	2	CEE 7/7
333.410			8							10		10	230	2	C14
333.411			6								•	16	230	2	CEE 7/7
333.416			8									16	230	-	Connection terminal
333.418				9								16	230	2	CEE 7/7
333.419			8				•					16	230	2	CEE 7/7
333.4061			8					•				16	230	2	CEE 7/7
333.4063			6					•	•			16	230	2	CEE 7/7
333.838			7				•	•				16	230	2	CEE 7/7
333.819			8									16	230	-	Connection terminal
333.805				6			•					13	230	2	UK
333.804				7								13	230	2	UK
800.1263					7 (T13)		•			10		10	230	2	T12
800.1259					8 (T13)					10		10	230	2	T12
800.1264					7 (T23)		•					16	230	2	T23
800.1262					8 (T23)							16	230	2	T23
800.1260					7 (T13)		•			10		10	230	2	T12
800.1258					7 (T23)		•					16	230	2	T23
800.1261					5 (T13)		•	•		10		10	230	2	T12
800.1265					5 (T23)		•	•				16	230	2	T23

BASIC 1HE

#	C13	C19	🌐	Outlets in total	Overvoltage protection	Miniature circuit breaker	Current per phase (A)	Phase(s)	Rated voltage (V)	Cable length	Plug	↕
800.1657*	24	3		27			16	1	230	3	CEE 16A	1075 x 44 x 47 mm
333.417			3	3			16	1	230	2	CEE 7/7	208 x 44 x 47 mm
333.0122			4	4			16	1	230	2	CEE 7/7	208 x 44 x 47 mm
333.413			12	12			16	1	230	2	CEE 7/7	565 x 44 x 47 mm
800.2334			12	12	•		16	1	230	2	CEE 7/7	608 x 44 x 47 mm
800.0105	18			18			16	3	400	3	CEE 16A	821 x 44 x 47 mm
800.2282	24	6		30			16	3	400	3	CEE 16A	1116 x 44 x 47 mm
800.2341	36	6		42			16	3	400	3	CEE 16A	1457 x 44 x 47 mm
800.0107			15	15			16	3	400	3	CEE 16A	821 x 44 x 47 mm
800.2339	24		6	30			16	3	400	3	CEE 16A	1203 x 44 x 47 mm
800.0119	20			20		2x C16A	32	1	230	3	CEE 32A	778 x 44 x 47 mm
800.2336	24	4		28		2x C16A	32	1	230	3	CEE 32A	1119 x 44 x 47 mm
800.0102	36			36		6x C16A	32	3	400	3	CEE 32A	1586 x 44 x 47 mm
800.0101*		6		6		6x C16A	32	3	400	3	CEE 32A	820 x 44 x 47 mm
800.2338	24	6		30		6x C16A	32	3	400	3	CEE 32A	1586 x 44 x 47 mm
800.2340	24		6	30		6x C16A	32	3	400	3	CEE 32A	1586 x 44 x 47 mm

* C19 with IEC lock



Learn more about the 19" BASIC 1HE



Learn more about the BASIC 1HE

INTELLIGENT PDUs

For modern, data-driven energy management



INTELLIGENT USE OF ELECTRICITY

For infrastructure that can think and respond

Data centres today are under great pressure to adapt: More and more data, new workloads, rising energy costs and high demands on availability and sustainability. At the same time, the demand for forward-looking energy management and the documentation of measured values is increasing.

With precise measurements and direct controllability at socket level, intelligent PDUs enable a new level of control over energy flows in the rack. This makes power distribution a controllable variable in the overall system: reliable, data-supported and traceable at all times.

Their potential is particularly evident in colocation environments, distributed edge structures or dynamically growing infrastructures. Consumption can be allocated, power peaks specifically avoided and outages prevented – centrally or remotely. This turns a technical necessity into a strategic building block for control, efficiency and operational safety.

DGUV V3 and the German Energy Efficiency Act (Energieeffizienzgesetz)

With regard to regulatory requirements, intelligent PDUs offer a decisive advantage: The German Energy Efficiency Act (EnEfG) requires detailed evidence of energy use. Active PDUs supply the necessary data directly from the rack. The implementation of DGUV Regulation 3 will also become much more efficient. Thanks to the integrated residual current monitoring (RCM), electrical systems can be permanently monitored

without having to switch them off. This means that the retest required in accordance with DGUV V3, which is normally associated with shutdowns and insulation measurements, can be replaced or significantly reduced by continuous residual current monitoring. This reduces testing costs, minimises interventions in ongoing operations and increases system availability. A solution that effectively combines operational readiness and safety.



BLUENET

Our intelligent PDUs

BlueNet is our technology for structuring, controlling and monitoring IT power supply systems. It records precise performance and consumption data and makes it available where it is needed.

Energy management

Operators can keep an eye on consumption and utilisation at all times via software, web interface or directly on the device. Threshold values can be defined individually. The system reacts automatically with messages or targeted switching operations. Restarts controlled by web link further increase availability and flexibility. As such, BlueNet supports efficient load distribution and ensures that operations are predictable, traceable and plannable.

Safety

Every PDU with BlueNet technology is individually digitally tested and fully documented in our production facilities in Europe. All components undergo intensive stress tests to ensure consistently high quality. The robust aluminium construction combines stability with low weight. Standards and guidelines are reliably met, and in many cases even exceeded.

Energy efficiency

BlueNet PDUs are among the most efficient in their class. Thanks to their low self-consumption, they save energy in continuous operation without sacrificing performance. The modular design enables a high level of functionality in a small space. At the same time, the compact design creates space for optimised climate control and cable routing in the rack. The BN ESSENTIAL series is one of the world's most compact power measurement systems with integrated network and sensor connection.



You can find more product information at
www.bachmann.com/bluenet



BLUENET OVERVIEW

Intelligent solutions

With product lines such as BN ESSENTIAL and BN PRO, BlueNet scales from simple monitoring to fully automated control – locally or globally,

centralised or decentralised. BlueNet thus provides the basis for well-founded decisions in the area of energy management in the data centre.

	BN0500 Local Metered	BN ESSENTIAL Metered
Measurement per phase	•	•
Measurement per port		
Switchable outlets		
Ethernet		•
Sensors		• Up to 2 sensors
Digital input/output		
Residual current monitoring, type B		
Overvoltage protection, type 3	(•) Optional – not monitored	(•) Optional – not monitored
Replaceable Controller		•
Replaceable power supply unit		•
Clustering		
Inline meter		•

	BN PRO Metered	BN PRO Metered+	BN PRO Switched
	•	•	•
		•	Upgradeable per licence
			•
	•	•	•
	• Up to 10 sensors	• Up to 10 sensors	• Up to 10 sensors
	•	•	•
	(•) Optional	(•) Optional	(•) Optional
	(•) Optional – monitored	(•) Optional – monitored	(•) Optional – monitored
	•	•	•
	•	•	•
	•	•	•
	•		

BN0500 LOCAL METERED

Local energy monitoring directly in the rack



BN0500 Local Metered was developed for use in IT infrastructures where centralised consumption monitoring is not planned or not economically viable. For example, in technical operating rooms, network distributors or decentralised telecommunications locations. The PDU enables phase-accurate power and consumption measurement with local display directly on the device. All measured values are shown on an illuminated display.

This makes the PDU suitable for quick status assessments, for example for temporary set-ups, retrofit projects or for verifying the base load as part of EnEfG requirements.

The PDU is based on the robust 1U aluminium profile of the BN ESSENTIAL product line and is equipped with an integrated controller. Trigger-proof sockets with V-Lock locking and cable protection options are factory-fitted. The controller is supplied with power via the load network – a separate supply line is not required.

FEATURES

- Compact 1U profile
- Country-specific sockets
- Local display of measured values
- Choice of various configuration options



Learn more about the product

19" BN0500 (230 V / 50 Hz) | Incl. mounting brackets

#				C13	C19	Outlets in total	Plug	Thermal/micro fuse (A)	Cable length (m)	Cable type	
16A/230 V											
800.2054	8					8	CEE 7/7		2	H05VV-F 3G 1.50mm ²	440 x 44 x 47 mm
800.2067		8				8	CEE 7/7		2	H05VV-F 3G 1.50mm ²	440 x 44 x 47 mm
800.2063			7 (T13)			7	T23	10	3	H05VV-F 3G 1.50mm ²	440 x 44 x 47 mm
800.2055				12		12	CEE 7/7		2	H05VV-F 3G 1.50mm ²	440 x 44 x 47 mm
800.2154					8	8	CEE 7/7		2	H05VV-F 3G 1.50mm ²	440 x 44 x 47 mm

BN0500 (230-400 V/50 Hz) | Incl. mounting brackets

#		C13	C19	Outlets in total	Plug	Cable length (m)	Cable type	Miniature circuit breaker	
16A/230 V									
800.2395		16	4	20	CEE 16A	3	H05W-F 3G 1.50mm ²		746 x 44 x 47 mm
800.2135*		24	4	28	CEE 16A	3	H05W-F 3G 2.50mm ²		958 x 44 x 47 mm
800.2396	4	16		20	CEE 16A	3	H05W-F 3G 1.50mm ²		746 x 44 x 47 mm
16A/400 V									
800.2398		18	3	21	CEE 16A	3	H05W-F 5G 2.50mm ²		978 x 44 x 47 mm
800.2400		24	6	30	CEE 16A	3	H05W-F 5G 2.50mm ²		1360 x 44 x 47 mm
800.2403		36	6	42	CEE 16A	3	H05W-F 5G 2.50mm ²		1616 x 44 x 47 mm
800.2399	3	18		21	CEE 16A	3	H05W-F 5G 2.50mm ²		978 x 44 x 47 mm
800.2401	6	24		30	CEE 16A	3	H05W-F 5G 2.50mm ²		1360 x 44 x 47 mm
800.2402	6	24	6	36	CEE 16A	3	H05W-F 5G 2.50mm ²		1787 x 44 x 47 mm
32A/230 V									
800.2405		16	4	20	CEE 32A	3	H05W-F 3G 4.00mm ²	2 x C16A	916 x 44 x 47 mm
800.2407		24	4	28	CEE 32A	3	H05W-F 3G 4.00mm ²	2 x C16A	1086 x 44 x 47 mm
32A/400 V									
800.2409	6	24		30	CEE 32A	3	H05W-F 5G 4.00mm ²	6 x C16A	1787 x 44 x 47 mm
800.2408		24	6	30	CEE 32A	3	H05W-F 5G 4.00mm ²	6 x C16A	1787 x 44 x 47 mm
800.2410		36	6	42	CEE 32A	3	H05W-F 5G 4.00mm ²	6 x C16A	2042 x 44 x 47 mm

* With integrated IEC lock

BN ESSENTIAL METERED

Essential network-enabled energy monitoring

FEATURES

- Measurement per phase
- Compact 1U profile
- Vertical or 19" horizontal mounting
- C13, C19 and country-specific sockets
- Hot-Swappable Controller
- Local display
- Remote access and monitoring – SNMP, HTTP web GUI
- Optional sensors – temperature and humidity
- For retrofitting to fulfil EnEg requirements



BN ESSENTIAL METERED

Essential network-enabled energy monitoring



Professional energy management begins where energy consumption must be documented, distributed and optimised with traceability. BN ESSENTIAL Metered was developed for precisely these requirements: As an entry-level solution for network-enabled energy consumption measurement at data centre and network level. The PDU is ideal for operators who want to retrofit existing infrastructures, increase their operational reliability and future-proof their systems.

The measurement is carried out per phase, all values can be read off locally on the device. At the same time, the data can be recorded and analysed centrally via the network and web interface. For example, to optimise consumption or to implement legal

requirements such as the German Energy Efficiency Act (Energieeffizienzgesetz). The continuous power measurement per phase supports energy-conscious operation and contributes to increasing the efficiency of IT devices and racks.

In terms of technology, BN ESSENTIAL Metered is based on the compact BlueNet architecture. This design creates space for cabling and air conditioning within the Rack and is available in a horizontal or vertical version. Various socket types are available for flexible application requirements, and country-specific variants are also possible.

The devices have integrated neutral conductor monitoring as standard and support the connection of external sensors, such as for recording temperature or humidity.



Learn more about the product

#	C13	C19	Country-specific	Outlets in total	Current per phase (A)	Rated voltage (V)	Miniature circuit breaker	Cable length	Plug	Horizontal mounting (19")
BM0023691	8			8	16	230		2	CEE7/7	•
BM0024203			6x CEE7/3	6	16	230		2	CEE7/7	•
BM0024205			6x UTE	6	16	230		2	CEE7/7	•
BM0024219			5x UK	5	13	230		2	UK	•
BM0024221	6	2		8	16	230		-	C20	•
BM0024222	24	3		27	16	230		3	CEE 16A	
BM0024223	24	6		30	16	400		3	CEE 16A	
BM0024224	24		6xCEE7/3	30	16	400		3	CEE 16A	
BM0024225	24	6	6xCEE7/3	36	16	400		3	CEE 16A	
BM0024226	24	4		28	32	230	2x C16A	3	CEE 32A	
BM0024228	24	6		30	32	400	6x C16A	3	CEE 32A	
BM0024229	24		6x CEE7/3	24	32	400	6x C16A	3	CEE 32A	
BM0024230	36	6		42	32	400	6x C16A	3	CEE 32A	



With hot-swappable controller unit
The built-in controller can be replaced during operation, allowing maintenance work to be carried out without interruption.

BN PRO

The control centre in the rack



With the growing complexity of modern IT infrastructures, the demands on power distribution in the rack are also increasing. Intelligent PDUs from the BN PRO series provide the necessary flexibility here – with intelligent monitoring, precise measurement and practical control. Whether in colocation, edge or dynamic enterprise environments, BN PRO ensures security and transparency. An extensive modular system enables a specific solution for every application to fulfil even special requirements.



Learn more
about the
product

BN PRO SERIES

Power distribution in the rack

BN PRO products have a modular structure and can be customised to meet your individual requirements. For example, from measuring each individual socket and targeted switching of individual sockets, to combining the measuring and switching of all sockets in the rack. The BN PRO modular system also enables the integration of different modules with protection and safety functions for technology and personnel, including residual current monitoring (RCM), overvoltage protection modules and comprehensive sensor technology.

Components that can be replaced during operation ensure availability in the event of servicing and can be easily replaced, even without specialised personnel. BlueNet sensors and external sensors such as door contacts are integrated via sensor and GPIO ports.

Thanks to a very powerful controller that can be connected directly to common DCIM and monitoring systems, the PDU becomes an intelligent information and control hub. User rights can be assigned individually via the BlueNet software – right down to socket level. As such, BN PRO reduces operating and maintenance costs in the long term while also increasing the availability of your infrastructure.

- **Hot-swappable controller:** Service-friendly even for non-professionals and without interrupting ongoing operation.
- **Hot-swappable power supply unit:** Service-friendly even for non-professionals and without interrupting ongoing operation.
- **Two Ethernet connections:** A 1 Gbit/s and a 100Mbit/s ports are available for separate management access or redundant communication.
- **One sensor port:** For connecting up to ten proprietary sensors
- **GPIO interface:** For connecting external actuators to expand the available environmental and operating data in and near the rack.
- **Power-Link function:** Power supply to neighbouring PDUs via PoE.
- **Colour coding for A and B feeds:** Orientation for the service team.
- **Hydraulic-magnetic circuit breakers:** No thermal derating, high operational reliability including remote monitoring.
- **PDU network:** Up to 20 PDUs can be connected to each other and managed via a single IP address.
- **Mounting material included:** For flexible and tool-free mounting.
- **2.4" TFT display:** With rotatable screen.



BN PRO Metered (p. 38)

meters electricity and consumption values with phase accuracy and forms the basis for central consumption analyses in the data centre.

BN PRO Metered+ (p. 40)

extends metering to socket level and enables differentiated consumption recording.

BN PRO Switched (p. 42)

supplements the phase-based measurement with the option of selectively switching individual outputs.

BN PRO Switched+ (p. 42)

combines switching function and measurement per socket and thus offers maximum control at outlet level.

TECHNOLOGY MODULES

Availability is the central aspect of all IT infrastructures

Filter mains interference with overvoltage protection

The standard-compliant overvoltage protection module (type 3) reliably protects connected devices from voltage peaks – caused by lightning strikes or mains interference, for example. After a protection event, the module can be replaced without tools and during operation. The protection status is continuously monitored by the PDU, the data can be visualised by software and forwarded via various interfaces for issuing alarms.



Customised connection

The feed can be positioned at the front or at the top – depending on what the rack architecture requires. Different plug and coupling systems are available, as well as individually configurable cable lengths and types. In combination with suitable cable entries, the PDU can be adapted precisely to the conditions on site – for maximum flexibility during installation and operation.



Fail-safe due to replaceable power supply unit and PoE

The power supply unit can be replaced during operation without interrupting the power supply. With a redundant power supply to the controller via PoE, the PDU remains available and easy to maintain at all times.

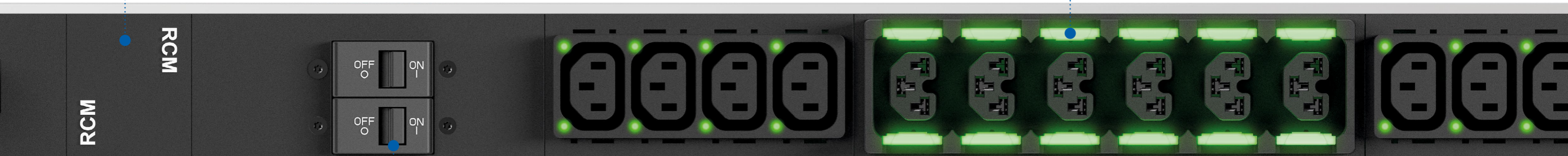


Permanent monitoring via AC / DC sensitive residual current monitoring

The AC / DC sensitive (type B) residual current monitoring (RCM) allows changes in the insulation level in the power supply to be recognised at an early stage. This can prevent downstream protective devices from being triggered and critical IT infrastructure failing. There is no need for a retest in the classic sense in accordance with DGUV V3. Granular measurement at rack or phase level also makes it easier to quickly localise possible sources of error.

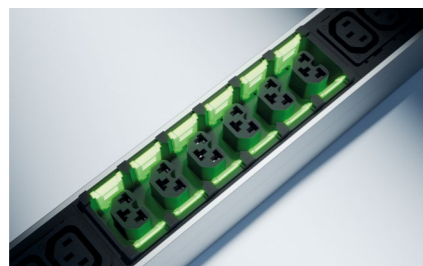
Symmetrical utilisation through neutral conductor current measurement

BlueNet offers integrated neutral conductor monitoring, which reliably detects excessive currents on the neutral conductor. Monitoring is standardised in accordance with EN 50600 and effectively protects the connected IT equipment against overload and consequential damage.



Utilise full potential with magnetic-hydraulic circuit breakers

Magnetic-hydraulic circuit breakers provide reliable protection against overload even at high ambient temperatures. In contrast to thermal variants, they are not subject to derating. Full power is maintained, even at higher temperatures. At the same time, they allow a compact side-by-side arrangement. Also ideal for high-performance applications in the rack.



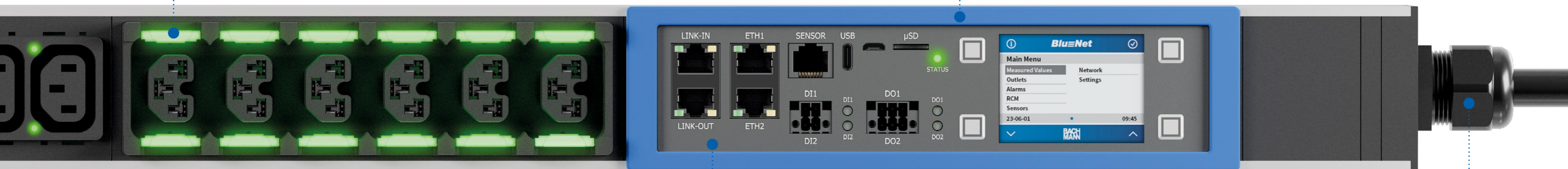
Maximum flexibility

The BN PRO Combo Sockets developed in-house combine the C13, C15, C19 and C21 socket types in a single socket insert. A wide variety of IT components can be connected directly without adapters or conversion. This saves space, increases the connection density and reduces the number of variants in the rack.



A/B power supply clearly identifiable by colour frame

To clearly identify the circuits in the rack, the controller frame is available in different colours. This means that it is also possible to visualise the separation between feed A and feed B. A simple yet effective aid for service teams.



Seamless monitoring thanks to replaceable controller unit

The controller records all electrical data in real time and makes it available via common protocols such as SNMP or Modbus TCP. Two LAN interfaces enable a redundant connection or the separation of management networks. The controller is hot-swappable and can be replaced during operation.

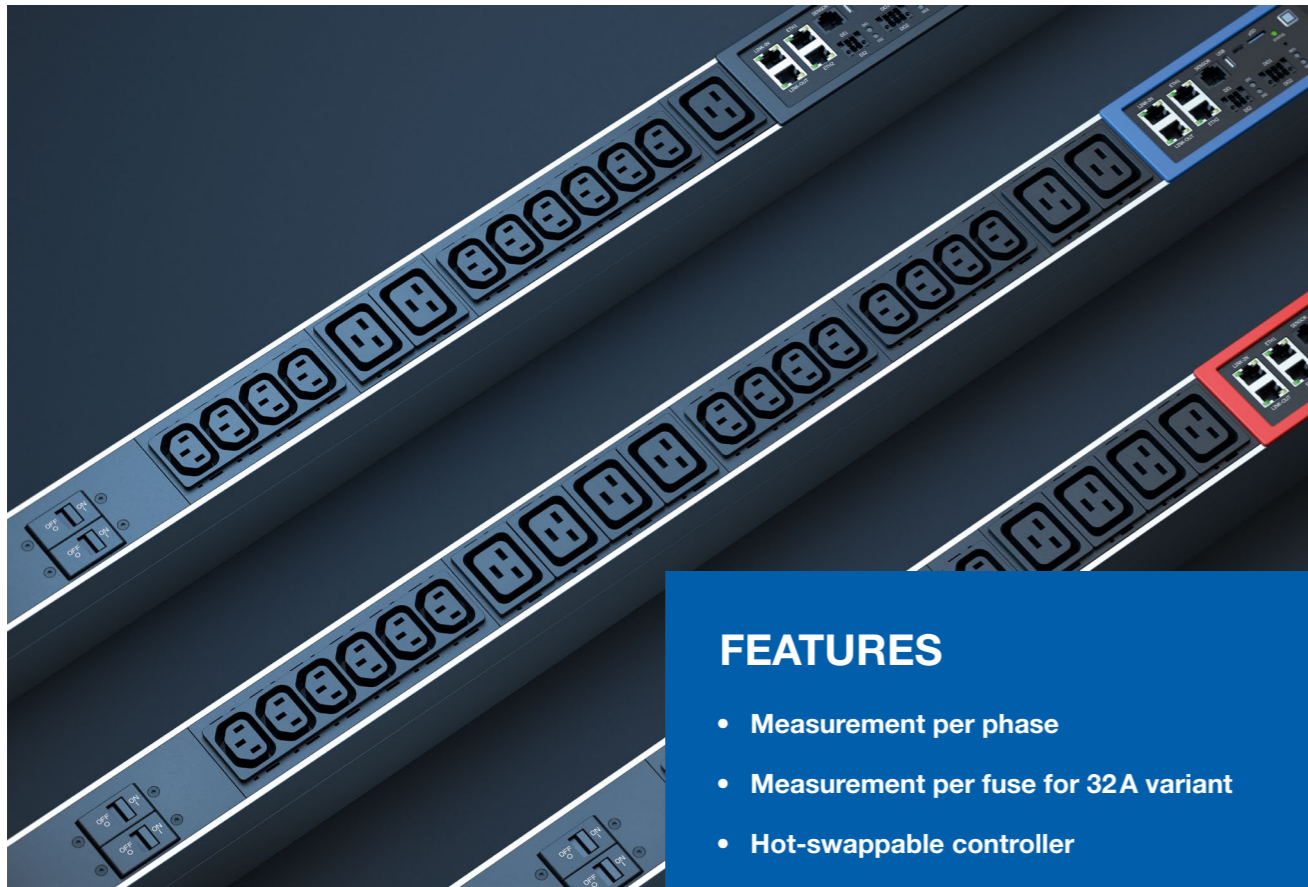
Modern, yet retro(fit)

As an inline module, the BN PRO Metered is ideal for retrofitting into existing IT infrastructures. The product is simply connected between the power supply and the consumer – without any modifications or interventions in the rack. As an option, the technology modules can also be used in the inline module.



BN PRO METERED

Network-capable current measurement at phase level



FEATURES

- Measurement per phase
- Measurement per fuse for 32A variant
- Hot-swappable controller
- Hot-swappable power supply unit
- Two Ethernet interfaces (1 x 1 Gbit/s and 1 x 100 Mbit/s)
- One sensor port for up to ten proprietary sensors
- GPIO port to connect the PDU to other actuators
- Micro SD card slot for data backup
- Power supply to neighbouring PDUs via PoE
- Colour coding for A and B feeds
- 2.4" TFT display: With rotatable screen
- Also available as an inline version

BN PRO Metered is an intelligent PDU for professional energy management. All relevant current and consumption values are reliably recorded per phase – even per fuse in the 32 amp versions. The data is available locally on the display and remotely via the network connection using software. This enables well-founded analyses, load planning and energy optimisation. BN PRO Metered ensures measurable transparency, especially where utilisation and consumption need to be documented in a traceable manner. Integration into existing systems is just as possible as using the module to comply with legal and normative requirements, such as the German Energy Efficiency Act (Energieeffizienzgesetz) and EN 50600.

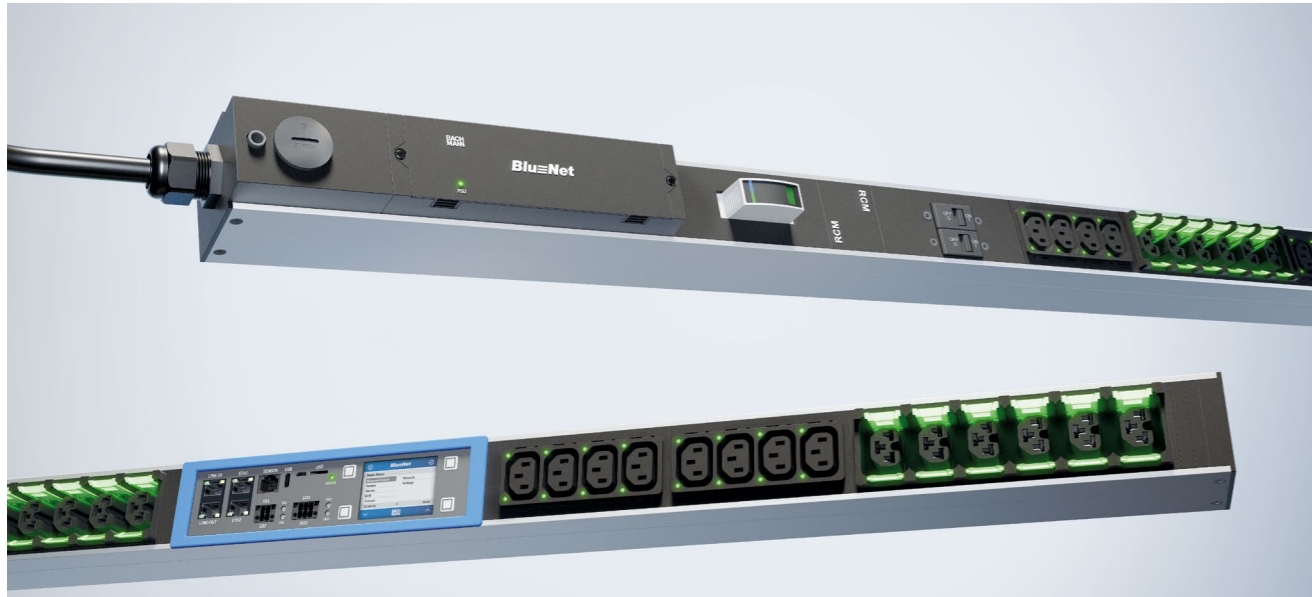


Learn more
about the
product

#	C13	C19	Outlets in total	Residual current monitoring	Current per phase (A)	Rated voltage (V)	Miniature circuit breaker	Cable length	Plug	↕
BM0015587	16	4	20		16	230	3	CEE 16 A		1076 x 56 x 70mm
BM0015588	16	4	20	per phase	16	230	3	CEE 16 A		1119 x 56 x 70mm
BM0015589	24	6	30		16	400	3	CEE 16 A		1409 x 56 x 70mm
BM0015590	36	6	42		16	400	3	CEE 16 A		1697 x 56 x 70mm
BM0015591	24	6	30	per phase	16	400	3	CEE 16 A		1567 x 56 x 70mm
BM0015592	24	4	28		32	230	2x 16 A	3	CEE 32 A	1376 x 56 x 70mm
BM0015593	24	4	28	per phase	32	230	2x 16 A	3	CEE 32 A	1419 x 56 x 70mm
BM0015594	24	6	30		32	400	6x 16 A	3	CEE 32 A	1789 x 56 x 70mm
BM0015595	36	6	42		32	400	6x 16 A	3	CEE 32 A	2075 x 56 x 70mm
BM0015597	24	6	30	per phase	32	400	6x 16 A	3	CEE 32 A	1928 x 56 x 70mm

BN PRO METERED+

Measure per socket via network



FEATURES

- Measurement per socket
- Measurement per fuse for 32 A variant
- Hot-swappable controller
- Hot-swappable power supply unit
- Two Ethernet interfaces (1 x 1 Gbit/s and 1 x 100 Mbit/s)
- One sensor port for up to ten proprietary sensors
- GPIO port to connect the PDU to other actuators
- Micro SD card slot for data backup
- Power supply to neighbouring PDUs via PoE
- Colour coding for A and B feeds
- 2.4" TFT display: With rotatable screen

For maximum detail in energy monitoring, BN PRO Metered+ not only measures the power consumption per phase, but for each individual socket. Ideal for colocation environments or distributed server landscapes with differentiated consumption recording. The precise allocation of loads supports targeted optimisation of energy use, redundancy planning and capacity management. All the technological advantages of the BN PRO series are integrated. From interchangeable controllers and power supply units to complete integration within existing monitoring and management systems. Customised configurations with various technology modules are also possible with BN PRO Metered+.



Learn more about the product

Metered+	C13	Combo (C13, C15, C19, C21)	Outlets in total	Residual current monitoring	Current per phase (A)	Rated voltage (V)	Miniature circuit breaker	Cable length	Plug	
BM0024743		24	24		16	230		3	CEE 16A	1191 x 56 x 70mm
BM0024745	16	8	24		16	230		3	CEE 16A	1184 x 56 x 70mm
BM0024747		24	24	per phase	16	230		3	CEE 16A	1234 x 56 x 70mm
BM0024748	16	8	24	per phase	16	230		3	CEE 16A	1226 x 56 x 70mm
BM0024749		24	6		16	400		3	CEE 16A	1387 x 56 x 70mm
BM0024750		36	36		16	400		3	CEE 16A	1598 x 56 x 70mm
BM0024751		24	18		16	400		3	CEE 16A	1707 x 56 x 70mm
BM0024752		36	36	per phase	16	400		3	CEE 16A	1726 x 56 x 70mm
BM0024753	12	18	30	per phase	16	400		3	CEE 16A	1520 x 56 x 70mm
BM0024754	24	4	28		32	230	2x 16A	3	CEE 32A	1380 x 56 x 70mm
BM0024755		24	24		32	230	2x 16A	3	CEE 32A	1311 x 56 x 70mm
BM0024756	24	4	28	per phase	32	230	2x 16A	3	CEE 32A	1423 x 56 x 70mm
BM0024757		24	24	per phase	32	230	2x 16A	3	CEE 32A	1354 x 56 x 70mm
BM0024758	24	12	36		32	400	6x 16A	3	CEE 32A	1947 x 56 x 70mm
BM0024760		24	24		32	400	6x 16A	3	CEE 32A	1718 x 56 x 70mm
BM0024761		36	36		32	400	6x 16A	3	CEE 32A	1958 x 56 x 70mm
BM0024764		24	12	per phase	32	400	6x 16A	3	CEE 32A	2086 x 56 x 70mm
BM0024765		24	24	per phase	32	400	6x 16A	3	CEE 32A	2075 x 56 x 70mm
BM0024763		36	36	per phase	32	400	6x 16A	3	CEE 32A	1845 x 56 x 70mm

BN PRO SWITCHED / SWITCHED+

Switching and measuring per socket via network

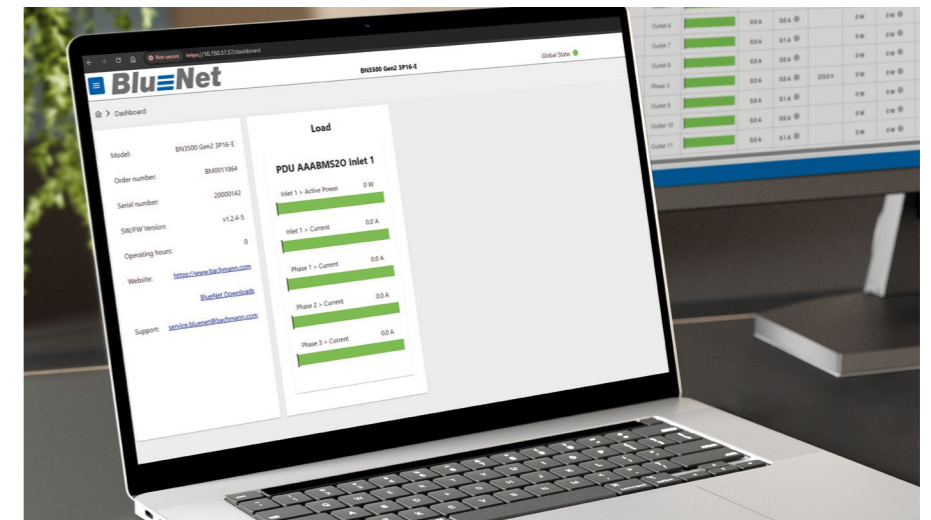


BN PRO Switched offers comprehensive control options for energy and load management in the rack. Individual outputs can be switched selectively. This means that connected appliances can be started, shut down or disconnected from the grid remotely and safely. Ideal for planned restarts, avoiding load peaks or a structured response to alarms. The selective connection of individual sockets on voltage recovery ensures controlled start-up

and the avoidance of high current peaks. Remote access to every socket increases operational reliability, especially for edge installations, remote racks or automated data centre processes.



Learn more
about the
product



BN PRO Switched+ via software upgrade

#	Description	For PDUs with
BM0024836	BN PRO Upgrade Switched+ S	Up to 12 outlets
BM0024837	BN PRO Upgrade Switched+ M	13-30 outlets
BM0024838	BN PRO Upgrade Switched+ L	More than 30 outlets

FEATURES

- Measurement per phase (BN PRO Switched) / Measurement per socket (BN PRO Switched+)
- Measurement per fuse with 32A variant
- Individually switchable
- Hot-swappable controller
- Hot-swappable power supply unit
- Two Ethernet interfaces (1 x 1 Gbit/s and 1 x 100 Mbit/s)
- One sensor port for up to ten proprietary sensors
- GPIO port to connect the PDU to other actuators
- Micro SD card slot for data backup
- Power supply to neighbouring PDUs via PoE
- Colour coding for A and B feeds
- 2.4" TFT display: With rotatable screen

BN PRO SWITCHED / SWITCHED+

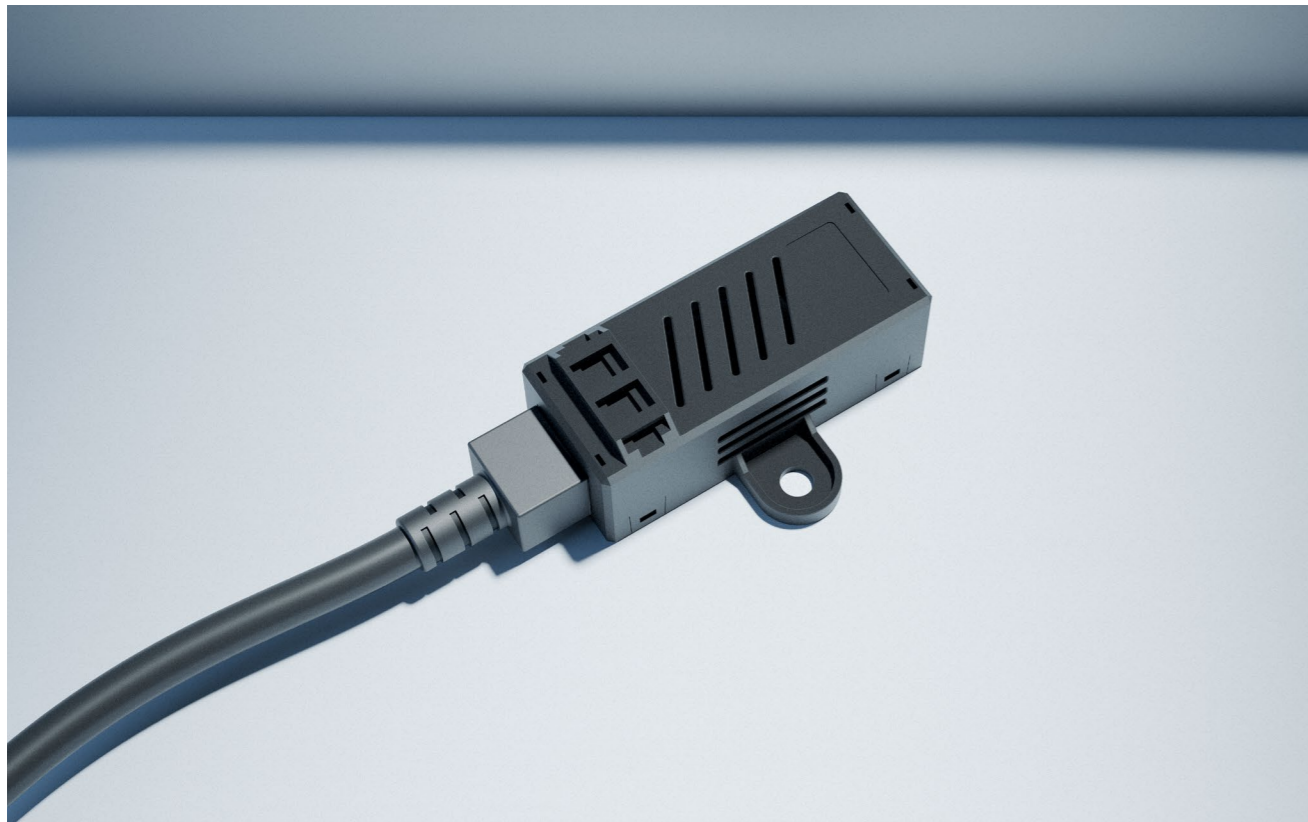
Switching and measuring per socket via network

Switched	License Switched+	C13	Combo (C13 C15 C19 C21)	Outlets in total	Residual current monitoring	Current per Phase (A)	Rated voltage (V)	Miniature circuit breaker	Cable length	Plug	↕
BM0024766	M		24	24		16	230	3	CEE 16A	1191 x 56 x 70 mm	
BM0024767	M	16	8	24		16	230	3	CEE 16A	1184 x 56 x 70 mm	
BM0024769	M		24	24	per phase	16	230	3	CEE 16A	1234 x 56 x 70 mm	
BM0024770	M	16	8	24	per phase	16	230	3	CEE 16A	1226 x 56 x 70 mm	
BM0024771	M	24	6	30		16	400	3	CEE 16A	1387 x 56 x 70 mm	
BM0024772	L		36	36		16	400	3	CEE 16A	1598 x 56 x 70 mm	
BM0024774	L	24	18	42		16	400	3	CEE 16A	1707 x 56 x 70 mm	
BM0024775	L		36	36	per phase	16	400	3	CEE 16A	1726 x 56 x 70 mm	
BM0024776	M	12	18	30	per phase	16	400	3	CEE 16A	1520 x 56 x 70 mm	
BM0024777	M	24	4	28		32	230	2x 16A	3	CEE 32A	1380 x 56 x 70 mm
BM0024778	M		24	24		32	230	2x 16A	3	CEE 32A	1311 x 56 x 70 mm
BM0024779	M	24	4	28	per phase	32	230	2x 16A	3	CEE 32A	1423 x 56 x 70 mm
BM0024780	M		24	24	per phase	32	230	2x 16A	3	CEE 32A	1354 x 56 x 70 mm
BM0024781	L	24	12	36		32	400	6x 16A	3	CEE 32A	1947 x 56 x 70 mm
BM0024782	M		24	24		32	400	6x 16A	3	CEE 32A	1718 x 56 x 70 mm
BM0024783	L		36	36		32	400	6x 16A	3	CEE 32A	1958 x 56 x 70 mm
BM0024785	L	24	12	36	per phase	32	400	6x 16A	3	CEE 32A	2086 x 56 x 70 mm
BM0024786	M		24	24	per phase	32	400	6x 16A	3	CEE 32A	2075 x 56 x 70 mm
BM0024784	L		36	36	per phase	32	400	6x 16A	3	CEE 32A	1845 x 56 x 70 mm



BN PRO ACCESSORIES

Add a specific function



BN PRO Combo Sensor

The BN PRO Combo Sensor reliably measures air temperature and relative humidity in the rack, creating the basis for continuous climate monitoring straight from the IT hardware. Unfavourable environmental conditions such as excessive temperature or high humidity can be detected and rectified at an early stage, before they cause failures or a loss of performance. The option of connecting up to ten sensors in series to one sensor port of the BN PRO PDU means that the climate situation in larger or particularly dense rack installations can also be seamlessly recorded. The simple integration with Cat6 network cable saves time during installation and enables precise, close-to-room placement within the rack.



BN PRO frame cover

The BN PRO frame cover enables clear visual labelling of the power supply in the rack. The coloured controller frame allows the A/B supply to be clearly distinguished – directly on the PDU, without additional labelling or documentation. The simple clip-on mounting makes the cover particularly easy to install, even when retrofitting. During operation, it supports quick orientation in the rack and significantly reduces the risk of errors during service calls. Colour coding is a reliable aid for safe operation, especially in dense infrastructures or with redundant supply paths. The colours blue and red are included in the scope of delivery. White, black and green are available as accessories. Other colours are available on request.

RNX UPDU

High performance PDU 63 amps



With increasing performance requirements due to AI servers, liquid cooling and dense HPC architectures, the demands on power distribution in the rack are also growing. The RNX UPDU with 63 amps was developed to meet precisely these challenges. It supplies IT systems with a connected load of up to 44 kW – precisely, safely and controllably. Designed for use in performance-intensive data centres such as hyperscalers, AI clusters and colocation environments with high-density racks, it combines powerful measurement technology with robust hardware. Power consumption and status can be monitored for each socket, both locally on the colour display and remotely via the network. All important values are available at all times – for compliance with legal requirements, for documentation or for operational energy management. The high-performance PDU is fully maintainable during operation and offers maximum availability thanks to its modular design. This makes it the ideal platform for IT infrastructures that are working at the limits of performance – without taking any risks.

FEATURES

- 44 kW connected load (63 A)
- 4-in-1 combo outlets
- 2.4" TFT display with rotatable screen
- Two Gbit ports with power over Ethernet (PSE and PD)
- Three AUX ports for external sensors
- 100 Mbit port, completely separated from the Gigabit network
- Two high-speed USB ports
- LED lighting per socket
- Hydraulic-magnetic switching fuses
- Switching and measurement per socket
- Measured values can be called up locally and remotely
- Integrated web server
- Possible to integrate into management systems

PROJECT CONSULTING

Your solution starts with our specialists



Power distribution in the rack is our speciality in the best sense of the word. As a technology driver with decades of experience, we not only understand the requirements within the rack, but also the upstream technology in all its facets. This systemic understanding makes us a reliable partner for anyone planning, expanding or modernising sophisticated data centre projects. The decisive factor here is the combination of technological modules and practical consulting expertise. Our modular solutions can be customised precisely to suit individual framework conditions. This applies to standard specifications and technical interfaces, as well as to local peculiarities in set-up or ongoing operation. When you work with us, you don't just bring hardware into the rack, but a solution that fits. Customers can contact us at any time, detailing their current situation and specific requirements. We support the process with in-depth project consulting and provide complete technical documentation. This includes data sheets, tender texts and drawings for technical project planning.

Contact information:

Consultancy and sales:
bluenet@bachmann.com
Application support:
bluenet.support@bachmann.com
BlueNet hotline: +49 711 86602 888

ABOUT US

Innovative. Individual. International.

As a family-run company in its third generation, we at BACHMANN have been designing electrical engineering solutions that go far beyond pure technology since 1947. Instead, we develop systems that bring people energy and make collaboration more intuitive.

Our portfolio ranges from Power Distribution Units and modular desktop connection panels to electrical engineering assemblies, integrated system worlds and smart AV technology. Always with the aim of not just supplying rooms with electricity, but also designing them to be functional and aesthetically pleasing. This means that we have an impact wherever the future is taking shape: in modern working environments, on construction sites and in workshops, in data centres and at home.

With development and production in Germany, Romania and China as well as around 30 sales and partner companies worldwide, we are globally networked – but still with local roots.

BASED IN

STUTT GART

75 years of experience

in developing, manufacturing and distributing high-quality power distribution solutions




1948
Year founded



 **HOME**

AROUND **30**
TRADING PARTNERS
WORLDWIDE

**CRAFT &
INDUSTRY**

OFFICE 

AROUND **800**
EMPLOYEES
WORLDWIDE 

PROVIDING
**LIFE
QUALITY**

More than **2000**
standard products

**WE
power
YOUR LIFE.**

**DATA CENTER
SOLUTIONS**

EMPOWERING SPACES TO WORK

Discover our smart solutions for dynamic and flexible working environments.



www.bachmann.com/global/downloads/catalogues-brochures/



CH ENSURE AVAILABILITY METI



 **Bachmann GmbH**
Ernstthaldenstr. 33
70565 Stuttgart | Germany

 +49 711 86602-888

 bluenet@bachmann.com

 www.bachmann.com

 [linkedin.com/company/bachmann-group](https://www.linkedin.com/company/bachmann-group)

 [youtube.com/@bachmanngroup](https://www.youtube.com/@bachmanngroup)