

013R9549 **INSTRUCTION**
Combi-set with *living* sensor & bi-directional straight valve

Installing the bi-directional valve

The valve is bi-directional and can be installed horizontally or vertically in either flow or return pipe.
 A built in flow direction selection feature can be used to eliminate the risk of water hammer.

Note! Maximum pressure drop should not exceed 0.45 bar.

Troubleshooting

In the unlikely event of water hammer being encountered, turn the setting ring to the another setting.
 Alternatively, if commissioning the whole system, establish the flow direction through each valve as shown below.
 If the flow direction needs to be changed there is no need to remove the valve, simply turn the setting ring.

<p>1.</p> <p>Close all radiator valves by turning the valve cap clockwise. Leave system to cool down.</p>	<p>2.</p> <p>Start boiler/heating.</p>	<p>3.</p> <p>Open a valve and determine flow direction. Which pipe heats up first?</p>
<p>4.</p> <p>Remove cap and turn setting ring (by hand) according to 4a. and 4b.</p>	<p>4a.</p>	<p>4b.</p>
<p>5.</p> <p>Repeat step 3 and 4 until all valves have been set correctly. To mount the <i>living</i> sensor, see next page.</p>		

013R9549 **INSTRUCTION**
Combi-set with *living* sensor & bi-directional straight valve

Preparing the *living* sensor for installation

The *living* sensor is supplied with two alkaline type AA batteries, a 2 mm Allen key and adapters for Danfoss RA valves.

Inserting the batteries

Remove the battery cover and insert the batteries. Make sure the batteries are correctly oriented.



Adjusting the temperature

Set the desired temperature by pressing . Default setting is 21°C.



This also allows the temperature to be changed temporarily during a setback period, without having to change the program or period.

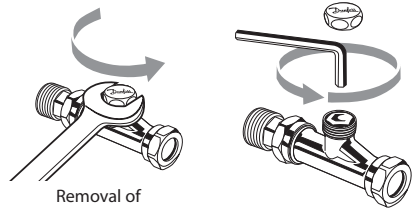
If the comfort temperature is changed, e.g. from 21°C to 22°C, *living eco*® will remember this change, and the comfort temperature will remain 22°C after the next setback period.

Setting time and date for the first time (only *living eco*®)

Once the batteries are installed	The time will flash in the display - 23:59.
Set the time	Set hours using and press .
	Set min. using and press .
Set date	Set date using and press .
	Format: day/month/year (DD/MM/YYYY)
Confirm setting	When flashes, press to confirm.

Sets with lockshield valves

Lockshield valve (type RLV-D) is only included in sets with code numbers 014G0010 and 014G0061.



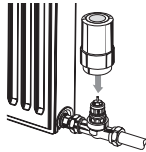
Removal of protective cap

Balancing

Installing the *living* sensor

must be flashing in the display prior to installing. If **not**, see installation mode in separate *living eco*®/ *living connect*® installation guide.

1. Mount the *living* sensor on the valve and tighten with the Allen key.



2. For *living connect*®:

Press for approx. 3 seconds to fix the sensor.

For *living eco*®:

Press for approx. 3 seconds to enter the function menu.

When a small flashes, press again to fix the sensor.

Do not cover the thermostat!

The thermostat opens and closes as determined by the temperature around it. Therefore the sensor must never be hidden behind thick curtains, furniture, etc.