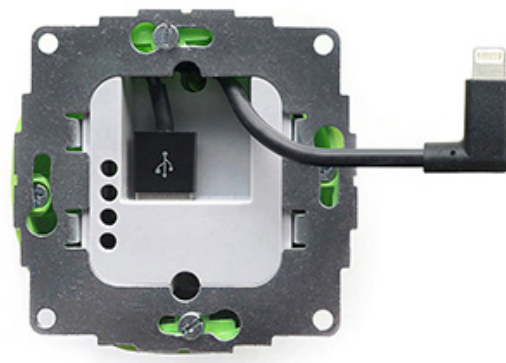


**Datasheet**

2024-10-10

Product Type  
 Product Name  
 GTIN / EAN  
 MPNR  
 Market Entry

**s24 L**  
**sCharge 12W Lightning®**  
 4260258610246  
 sCh-12W-8pin-1.0  
 March 2019



Description  
 Very compact in-wall USB power supply for wall mounted Lightning devices.  
 Direct connection with a USB-C to Lightning® cable.  
 Nominal input: 100-250V~, ±10%, 50 -60Hz,  
 Nominal output: 5V=, +5%/-5%, 2400mA

Compatibility  
 to all iPads and iPhones with Lightning® connector.  
 Fits in European or British standard gang boxes with a minimal depth of 42mm.  
 Please check our website for more information.

Certifications  
**KEMA (EUR), CE :**  
 RoHS Directive (2011/65/EU)  
 EMC Directive (2014/30/EU)  
 Low Voltage Directive (2014/35/EU) ErP Directive (2009/125/EC)  
 This product is in compliance with the following standards: EN 60950-1 (Incl. AU, CN, UK deviations)  
 EN 60065, EN 62368-1, EN 55032 (class-B), EN 55024  
 EN 60669-2-1 (clause 26)



Content  
 • sCharge 12W with Lightning® cable, 30 cm  
 • User manual /instruction sheet in EU languages, turkish, russian, chinese

Material/ Ecology  
 Packaging  
 Metal mounting frame, plastic housing.  
 RoHS compliant, WEEE registration: DE 64398562  
 Packaging completely made of cardboard



Measures/ Weight  
 Box 80 x 80 x 50 mm (HxWxD), 80 g (sCharge only)  
 Product 71 x 71 x 33 mm with metal frame, 120 g (incl. cable and packaging)

HS Code  
 Country of Origin

8504 4083  
 China



Mandatory information according to the General Product Safety Regulation (GPSR):  
**Note! Installation only by persons with relevant electrical knowledge and experience!**

Improper installation puts your own life and the lives of the users of the electrical system at risk. Improper installation may result in serious damage to property, e.g. due to fire. You may be personally liable for personal injury and damage to property. Contact an electrician!