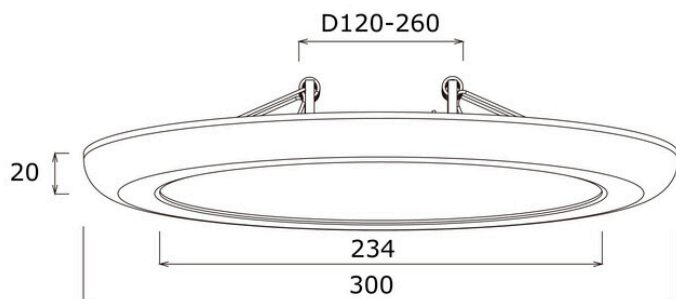


THIN

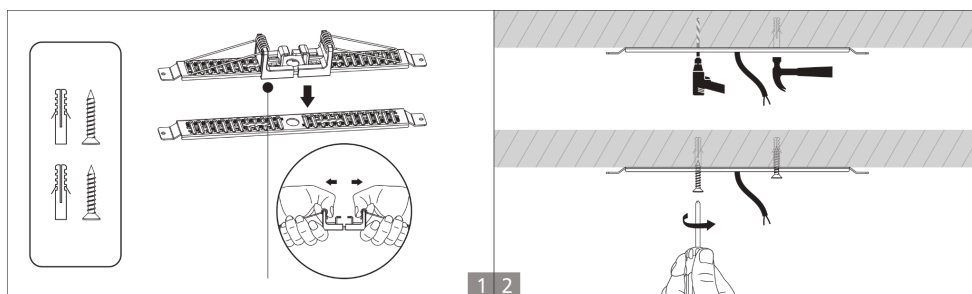
ALASVALO | DOWNLIGHT | DOWNLIGHT

220 - 240 V ~ 50/60HZ
Tc : -10°C - +40°C

**FI**

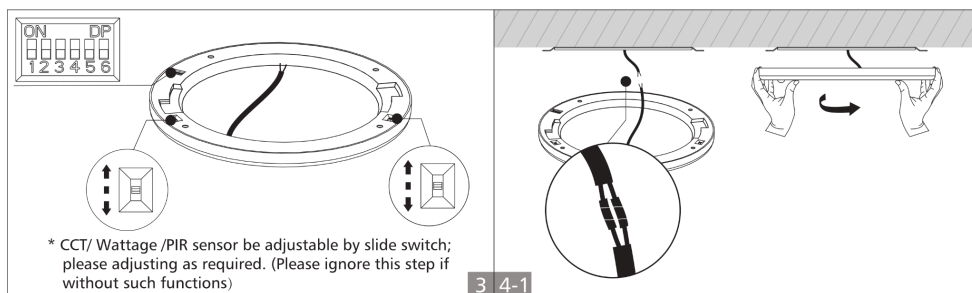
Tämä tuote sisältää energiatehokkuusluokan E valonlähteen.

Valaisimen saa asentaa vain sähköalan ammattilainen. Käytä ainoastaan syöttöjännitettä ja taajuutta, joka on merkitty valaisimeen / liitäntälaitteeseen. Kytke virta pois päältä ennen asennusta tai huoltoa. Tämä asennusohje on säilytettävä ja sen on oltava käytössä asennuksessa ja huollossa. Tämän valaisimen valonlähde ei ole vaihdettavissa. Kun valaisin rikkoutuu se on poistettava käytöstä.

**EN**

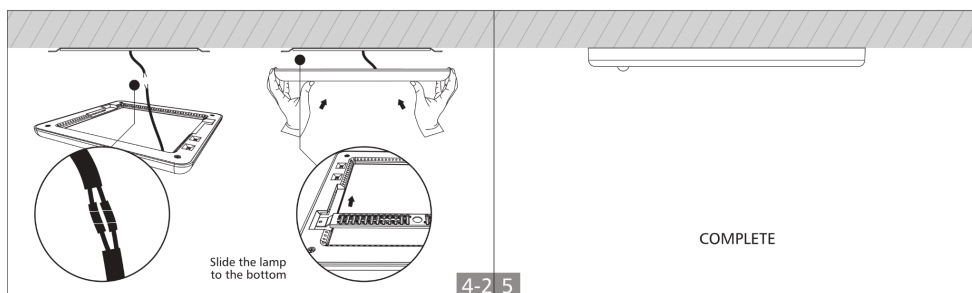
This product contains an energy efficiency class E light source.

The luminaire may only be installed by an electrician. Use only the supply voltage and frequency marked on the luminaire / ballast. Turn off the power before installation or maintenance. These installation instructions must be kept and used during installation and maintenance. The light source and driver of this lamp can't be replaced.

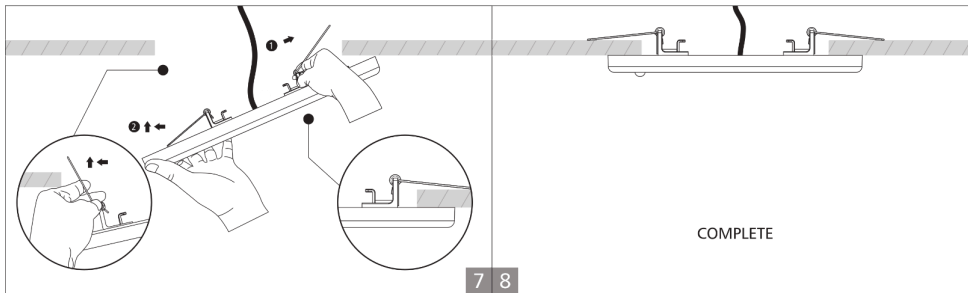
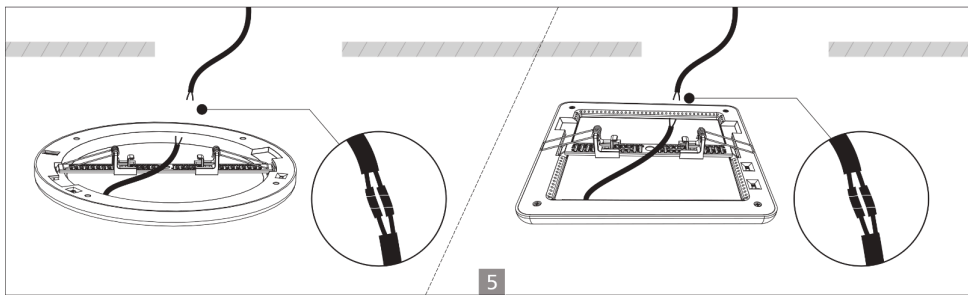
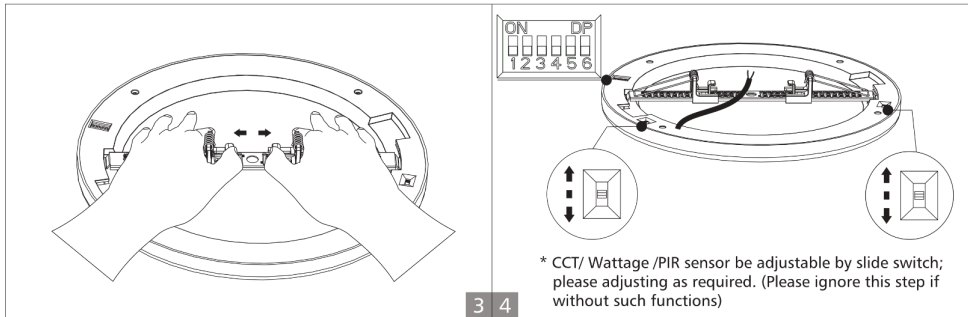
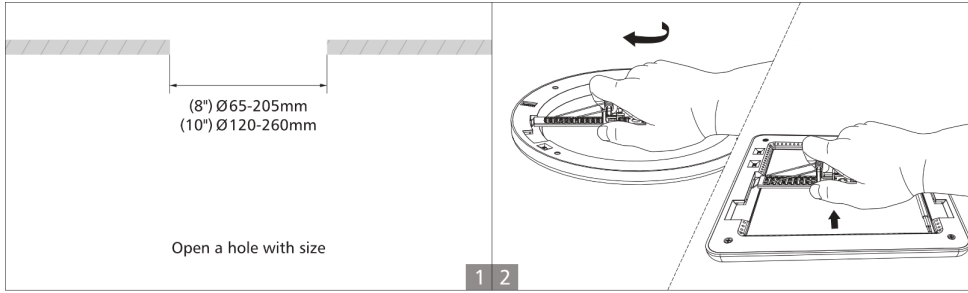
**SWE**

Denna produkt innehåller en ljuskälla av energieffektivitetsklass E.

Armaturen får endast installeras av elektriker. Använd endast matningsspänningen och frekvensen markerade på armaturen/donet. Stäng av strömmen före installation eller underhåll. Dessa installationsanvisningar måste förvaras och användas under installation och underhåll. Ljuskällan och strömförsörjning för denna lampa kan inte bytas.



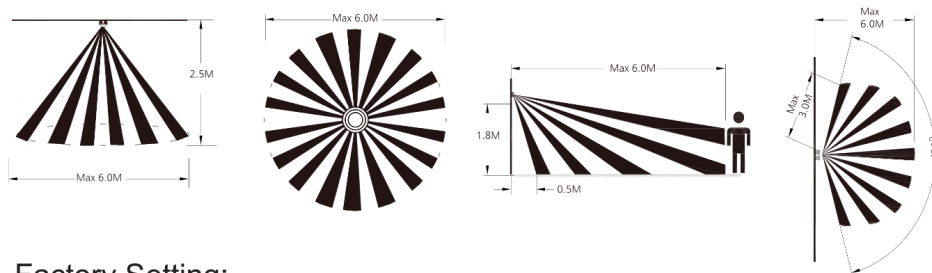
THIN



THIN



Detective Range



Factory Setting:



Sensor Setting:

Detection area:

Detection Area	
1	
-	100%
ON	50%

Detection area can be reduced by selecting the combination on the DIP switches to fit precisely each application.

Notice 1: The test is based on a height of 3m, the radius is the ground detect distance, which can be selected through the slide switch.

Notice 2: The detective range is measured by human body whose stature is around 1.6-1.7M with medium size and traveling speed is around 1.0-1.5M per second. If the stature, bodily form and traveling speed are changed, then the detective range will be changed accordingly.

Notice 3: Test result will be highly influenced by test environment, the more open environment, the closer detect distance; the narrower environment, the longer detect distance. The detector may do self-excitation in a narrow environment.

Hold Time	
2	3
-	5S
-	60S
ON	3min
ON	10min

Hold time:

Refers to the time period the lamp remains at 100% illumination after no motion detected.

Notice 1: The hold time can be selected by the slide switch.

The hold time counting should be started after the sensor is powered on and initialized.

Daylight Sensor	
4	-
-	disable
ON	30lux

Daylight sensor:

The sensor can be set to only allow the lamp to illuminate below a defined ambient brightness threshold.

When set to Disable mode, the daylight sensor will switch on the lamp when motion is detected regardless of ambient light level.

Notice 1: The light threshold can be selected through the slide switch, it may cause a large deviation in different lamps.

Stand-by DIM Level	
5	
-	0%
ON	20%

Stand-by dimming level:

This is the dimmed low light output level you would like to have after the hold-time in the absence of people.

Stand-by Period	
6	
-	∞
ON	15min

Stand-by period:

This is the time period you would like to keep at the low light output level before it is completely switched off in the long absence of people.