

ENVIRONMENTAL PRODUCT DECLARATION

Seamless steel OCTG, line pipes and tubes



In accordance with ISO 14025:2006 and EN 15804:2012+A2:2019/AC:2021

Programme:	The International EPD® System, www.environdec.com
Programme operator:	EPD International AB
EPD registration number:	EPD-IES-0008914
Publication date:	2024-12-27
Revision Date:	2025-05-26
Valid until:	2029-12-27

PROGRAMME INFORMATION

Programme:	The International EPD® System
Address:	EPD International AB Box 210 60 SE-100 31 Stockholm Sweden
Website:	www.environdec.com
E-mail:	info@environdec.com

Accountabilities for PCR, LCA and independent, third-party verification

Product Category Rules (PCR)

CEN standard EN 15804 serves as the Core Product Category Rules (PCR)

Product Category Rules (PCR): Construction Products, PCR 2019:14 Version 1.3.4

PCR review was conducted by: The Technical Committee of the International EPD® System. See www.environdec.com/TC for a list of members. Review chair: Claudia A. Peña, University of Concepción (Chile). The review panel may be contacted via the Secretariat info@environdec.com

Life Cycle Assessment (LCA)

LCA accountability: Bureau Veritas Latvia SIA. Email: riga@bureauveritas.com

Third-party verification

Independent third-party verification of the declaration and data, according to ISO 14025:2006, via:

☒ EPD verification by individual verifier

Third-party verifier: Elisabet Amat, GREENIZE

Approved by: The International EPD® System

Procedure for follow-up of data during EPD validity involves third party verifier:

☐ Yes ☒ No

The EPD owner has the sole ownership, liability, and responsibility for the EPD.

EPDs within the same product category but registered in different EPD programmes, or not compliant with EN 15804, may not be comparable. For two EPDs to be comparable, they must be based on the same PCR (including the same version number) or be based on fully-aligned PCRs or versions of PCRs; cover products with identical functions, technical performances and use (e.g. identical declared/functional units); have equivalent system boundaries and descriptions of data; apply equivalent data quality requirements, methods of data collection, and allocation methods; apply identical cut-off rules and impact assessment methods (including the same version of characterisation factors); have equivalent content declarations; and be valid at the time of comparison. For further information about comparability, see EN 15804 and ISO 14025.

LEARN MORE ABOUT INTERPIPE

Owner of the EPD: Interpipe Niko Tube LLC

Legal address: 56, Trubnykiv Av., Nikopol, Ukraine, 53201

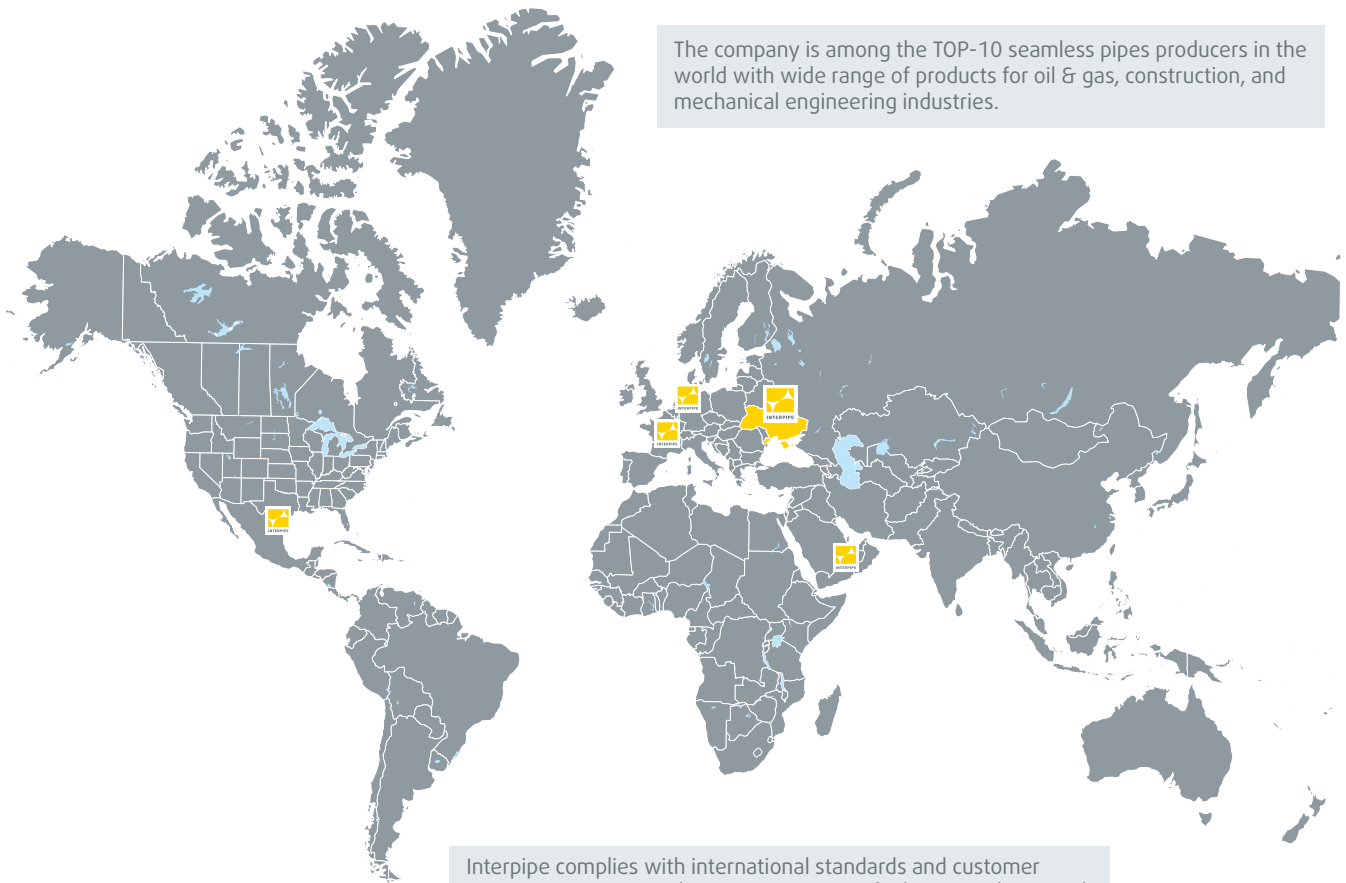
Manufacturing site #1: 35, Kashtanova Str., Dnipro, Ukraine, 49081

Manufacturing site #2: 4, Dneprostalivska Str., Dnipro, Ukraine, 49051

Contact: Vladislav Varnavskiy, +380 56 736 60 06, vladislav.varnavskiy@m.interpipe.biz

Interpipe is a vertically integrated company aggregating own steel production with further manufacture of steel pipes and railway wheels. Interpipe successfully markets steel goods to more than 80 countries through a net of trade offices in the Europe, America and the Middle East.

The company is among the TOP-10 seamless pipes producers in the world with wide range of products for oil & gas, construction, and mechanical engineering industries.



Interpipe complies with international standards and customer requirements. Our production sites are certified in accordance with ISO 9001, ISO 14001, ISO 45001, ISO 50001, API Q1, API 5CT, API 5L, ASTM, DIN (EN), DNV, Lloyd Register, UDT.



North
American
Interpipe



Interpipe
Europe SA



Interpipe
Central Trade



Interpipe
Middle East

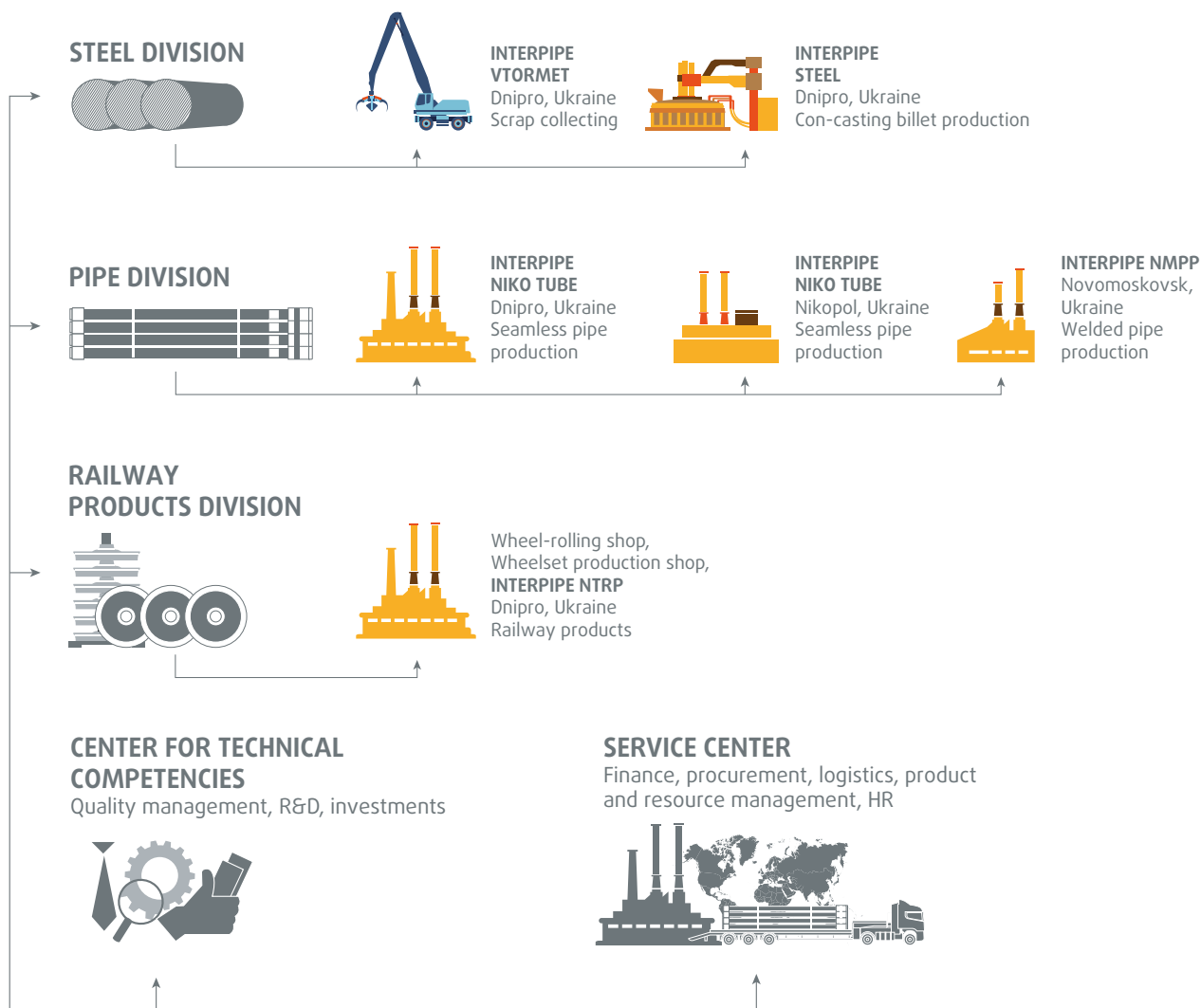


Interpipe
Ukraine

FULL PRODUCTION CHAIN IN DNIPRO REGION, UKRAINE

The structure of Interpipe includes 5 plants located in the Dnipropetrovsk region – one of the largest industrial centers of Ukraine. The company consists of 3 divisions: steel, pipe, and railway products.

Interpipe controls the quality of products at each stage: from the production of raw materials to the delivery of finished products to customers.



PRODUCT INFORMATION

Product name: Seamless steel OCTG, line pipes and tubes

Oil & Gas

Interpipe offers a full range of OCTG pipes, covering the needs of exploration and production as well as transport and processing of oil and gas. Each project challenge for Oil & Gas well equipment finds its own unique solution in Interpipe premium connections as well as the large accessorize assortment.



Line & general mechanical pipes

Interpipe hot-rolled seamless steel pipes are designed for the most demanding applications, from heavy-duty construction projects to high-performance mechanical equipment. The product range includes hollow bars (semi-finished pipes that can be processed according to the needs of specific markets) and round sectioned pipes for a variety of uses. These pipes are available in a wide range of sizes and steel grades to meet any customer requirement.



Pipes for heat power engineering

Interpipe offers a wide range of Seamless Carbon Steel, Alloy Steel and Heat-resistant Steel Pipes for High-Temperature & High-pressure Services as Low, Medium, and High-pressure Boilers, Pressure Vessels, Heat Exchangers, Superheaters, Refineries, Condensers and other thermal engineering applications under regulations of ASME Boiler and Pressure Vessel Code and applicable standards EN 10216-2, ASTM A 106, ASTM A179, ASTM A210, ASTM A213, ASTM A335, etc.



PRODUCT IDENTIFICATION

Interpipe seamless steel pipe production complies with international standards, specifically

API Spec 5CT 11th edition, December 2023

Casing and Tubing

API Spec 5L 46th edition, April 2018

Line pipe

ASTM A53/A53M

Pipe, Steel, Black and Hot-Dipped, Zinc-Coated, Welded and Seamless

ASTM A106/A106M

Seamless Carbon Steel Pipe for High-Temperature Service

ASTM A192/192M

Seamless carbon steel boiler tubes intended for high-pressure applications such as boilers and superheaters

ASTM A333/333M

Seamless and Welded Steel Pipe for Low-Temperature Service and Other Applications with Required Notch Toughness

ASTM A179/179M

Seamless cold-drawn low-carbon steel Heat-exchanger and Condenser tubes

ASTM A210/210M

Seamless Medium-Carbon Steel Boiler and Superheater Tubes

EN 10216-1

Non-alloy steel tubes with specified room temperatures properties

EN 10216-2

Non-alloy and alloy steel tubes with specified elevated temperatures properties

EN 10216-3

Alloy fine grain steel tubes

EN 10216-4

Non-alloy and alloy steel tubes with specified low temperatures properties

EN 10210-1

Hot finished structural hollow sections of non-alloy and fine grain steels

EN 10225-35

Weldable structural steels for fixed offshore structures

EN 10255

Non-alloy steel tubes suitable for welding and threading

EN 10294-1

Hollow bars for machining
Non alloy and alloy steels

EN 10297-1

Seamless steel tubes for mechanical and general engineering purposes

EN 10305-1

Steel tubes for precision Applications
Seamless cold drawn tubes

UN CPC code: 4128 Tubes, pipes and hollow profiles, of steel

Geographical scope: The activities modeled in this EPD correspond to Ukraine for modules A1-A3 and a Global scenario for modules C1-C4



LCA information

Declared unit: 1 ton of seamless pipe accompanied by plastic caps.

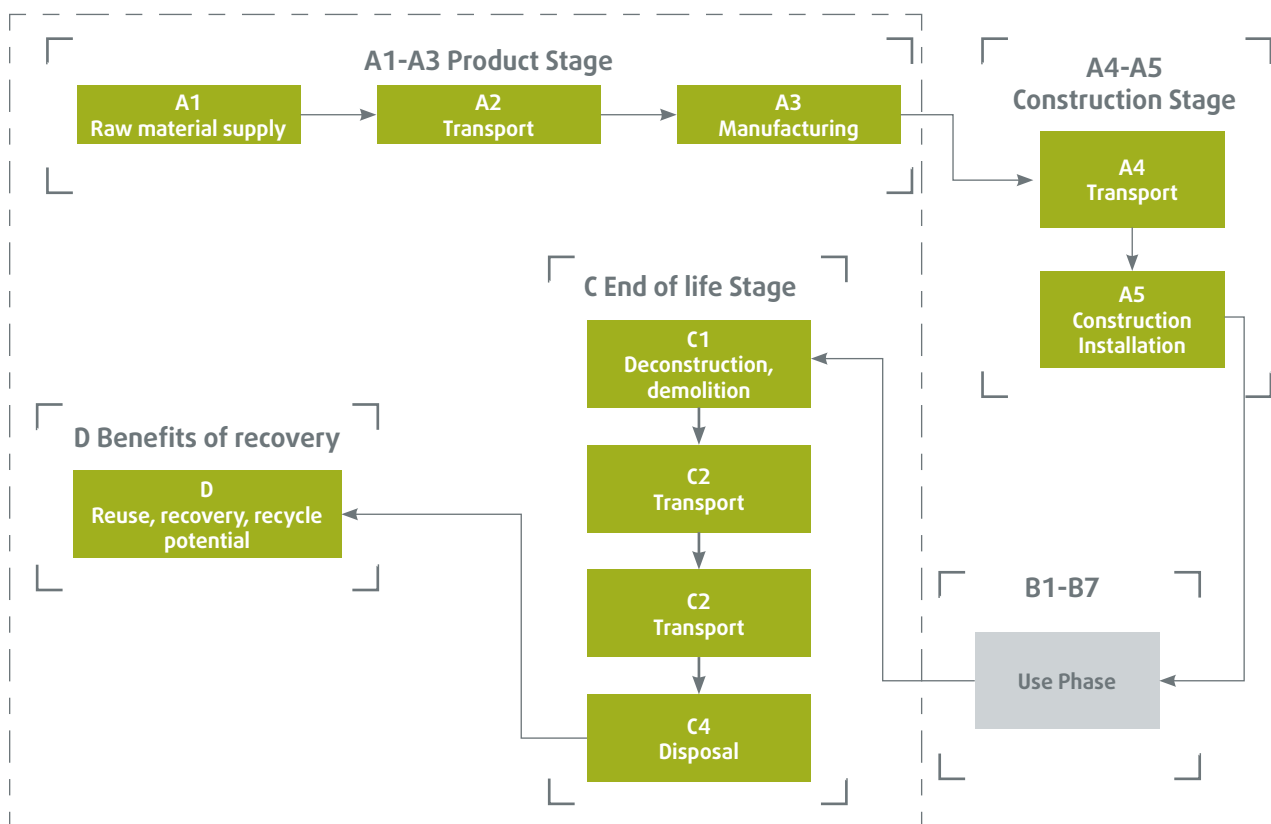
Reference service life: N/A

Time representativeness: The data on the manufacturing processes in module A3 represents the reporting period for the calendar year 2021.

Database(s) and LCA software used: The LCA for the EPD development was performed in SimaPro 9.6 with Ecoinvent 3.10 and the CF package for EN 15804 based on EF 3.1.

Description of system boundaries: B) Cradle to gate with options, modules C1–C4 and optional modules (A1–A3 + C + D and additional modules). The additional module is A5. However, the results presented in module A5 correspond only to the potential impacts of the waste treatment of packaging materials accompanying the product.

System diagram:



THE INTERNATIONAL EPD® SYSTEM

More information: During this LCA, the polluters pay, and modularity principles have been followed. Double counting has been avoided. This EPD is intended for a specific product rather than for multiple products.

The processes related to infrastructure, construction, and production of equipment and tools that are not directly consumed in the production process have been excluded. Activities personnel-related, such as transportation to and from work, have been excluded. Long-term emissions are also excluded from the impacts.

This EPD covers the production of seamless pipes in two locations belonging to Interpipe. The results presented in this document represent both sites as they are a weighted average impact considering the production volumes of the included volumes (Section 2.2.2.1 PCR 2019:14).

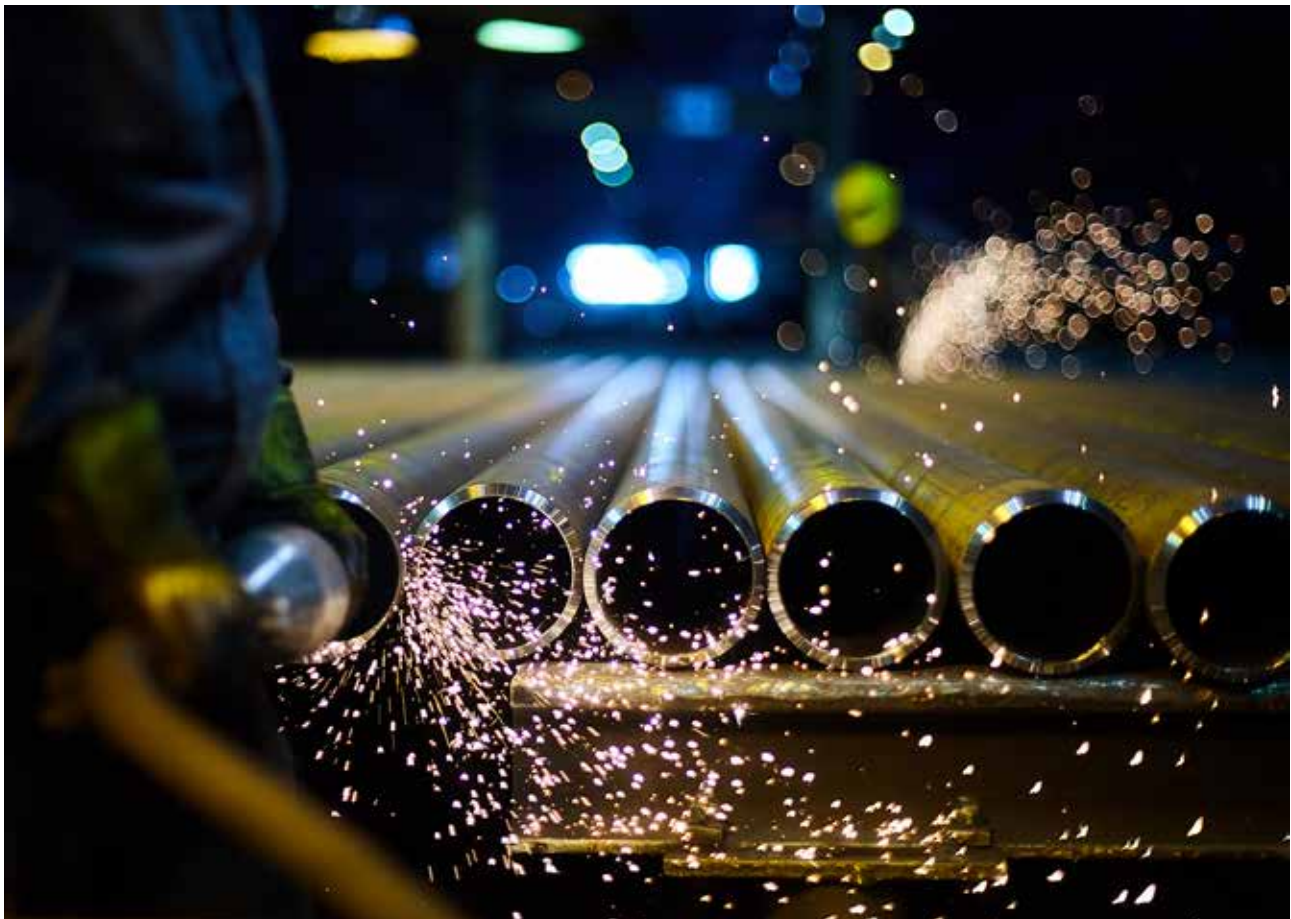
Data quality: The foreground data was collected internally, considering the available production amounts and measures during the reporting period. Scenarios regarding waste fate were taken from communications with product end users and modeled consequently. Background data processes to model the end-of-life scenarios were taken from Ecoinvent 3.10.

According to the UN Environment Global Guidance criteria on LCA database development, the quality level is Good. Data is geographically representative as it comes from the area of study. It is technically representative as it comes from processes and products under study using the same state of technology defined in goal and scope. According to the documentation, it is also time-representative as the time distance between the valid data from the background and the reporting period is no more than three years. A data quality rating was performed using a rating system where one means very good and five is very poor, in line with EN 15804 Annex E and the guidelines for EF-compliant datasets and quality data assessment. An average for each criterion is presented as follows:

Technological Representativeness, TeR	Geographic representativeness, GeR	Time Representativeness, TiR	Precision, P	Average DQR
2.0	1.8	1.0	2.6	1.8

Cut-off criteria: All primary raw materials and processes have been considered. No cut-off has been applied in this study, and 100% of materials and energy have been considered.

Allocation: EN 15804 and PCR 2019:14 recommend that allocation among products and co-products should be avoided when possible. However, given the nature of the manufacturing process in the two locations, some inflows, such as ancillary and packaging materials, and output flows to waste treatment activities, were also allocated following physical properties based on production volumes.



STAGES AND PRODUCTION DESCRIPTION

The production of the steel pipes can be summarized in the following steps and figures:

1. Cutting a round billet into specific length
2. Heating the billet to the rolling temperature
3. Stitching of the pipe billet
4. Cooling the pipe products
5. Straightening of pipe products
6. Technological non-destructive inspection of the pipe products
7. Trimming of end sections and cutting pipes to specific length
8. Heat treatment of pipe products and their straightening
9. Final testing and non-destructive development
10. Painting and labeling



STAGES AND PRODUCTION DESCRIPTION:

Pipes and Tubes Production



Steel billets inspection



Steel billets cutting



Steel billets heating



Pipes rolling



Pipes cooling



Straightening of pipes

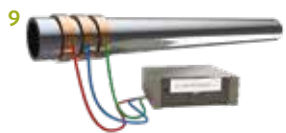


Pipes visual inspection

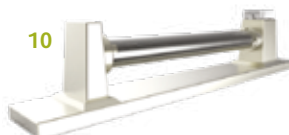


Geometric inspection, sampling and testing

Line Pipes and Tubes Finishing



Non-destructive Testing



Hydrotesting



Beveling



Coating of pipes



Marking



Bundling

OCTG Finishing



Pipe ends upsetting



Heat treatment



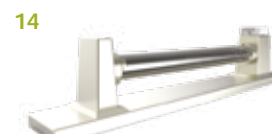
Non-destructive Testing



Threading and thread inspection



Screwing of couplings



Hydrotesting



Drifting



Coating of pipes



Marking



Bundling

THE INTERNATIONAL EPD® SYSTEM

Product Stage

A1 – Raw material supply: This stage considers the extraction and processing of all raw materials, including secondary material processing, if applicable.

A2 - Transport: This stage accounts for transporting raw materials to the facilities in Ukraine. It includes road transport by lorry and freight train vehicles.

A3 - Manufacturing: This stage includes the manufacturing process conducted in the facilities before transporting the finished product to different locations. The input of packaging materials is considered in this stage. Waste treatment activities derived from manufacturing waste are also accounted for until such elements reach the end of the waste state.

The electricity generation and upstream processes linked to extracting and transporting materials and fuels previously to combustion or utilization are automatically considered within the Ecoinvent dataset. However, Interpipe's electricity is supplied by a contractual instrument specifying a given mix. Given that there is no disclosed residual mix for Ukraine, the mix in the contractual instrument has been utilized for module A3. The electricity background dataset used includes the transmission network - direct emissions to air of Ozone and N2O. The modeled electricity mix is as follows:

Electricity Source	Share in the electricity mix
Electricity, high voltage {UA} electricity production, hard coal Cut-off, U	30.40%
Electricity, high voltage {UA} electricity production, hydro, run-of-river Cut-off, U	21.80%
Electricity, high voltage {UA} electricity production, natural gas, conventional power plant Cut-off, U	0.40%
Electricity, high voltage {UA} electricity production, nuclear, pressure water reactor Cut-off, U	28.80%
Electricity, high voltage {UA} electricity production, oil Cut-off, U	0.2%
Electricity, high voltage {UA} market for electricity, high voltage Cut-off, U	12%
Electricity, low voltage {RoW} electricity production, photovoltaic, 570kWp open ground installation, multi-Si Cut-off, U	6.40%

The resulting impact from the modeled customized electricity mix, utilizing the GWP-GHG indicator, is 0.526 kg CO2eq/kWh.

Construction Stage

A4 – Transport to the construction site: This module is not declared.

A5 – Construction/Installation: This module is declared including only the packaging materials end-of-life. The potential environmental impact arising from the waste treatment of the packaging materials accompanying the seamless pipes is reported in this EPD. No other installation processes have been included due to several possibilities of uses and applications.

Use Stage:

During a regular-use scenario, it is assumed that no maintenance, repair, replacement, and/or refurbishment is required. Hence, this optional stage is not considered (B1–B5). Energy or water consumption is unnecessary and thus not declared for the building operation (B6–B7).

End of Life Stage:

C1 – Deconstruction/Demolition: Given the high uncertainty on the operations required for dismantling the product from its intended use, the environmental impact is assumed to correspond to emissions from the deconstruction of waste reinforcement steel.

C2 - Transport: Transport to waste disposal treatment site. Given the use of seamless pipes mainly in oilfields, a 200 km distance to the disposal site by road is assumed.

C3 – Waste processing: This stage is modeled considering that 50% of the seamless pipes can be reused (components for reuse). This is a conservative assumption given that steel pipes are usually reused for spare parts or other purposes in oilfields and upstream facilities.

C4 - Disposal: This module accounts for the final disposal of materials to reach the end-of-waste state. The remaining 50% of scrap steel is assumed to be landfilled as inert material.

Benefits and loads beyond the system boundaries:

D – Benefits of recovery: The benefits and loads beyond the system boundaries include transporting the recovered materials to a market where they could theoretically replace primary materials for re-use, if necessary. This study assumed reused seamless pipes avoid the production of new steel seamless pipes with a quality ratio (QRout/QSub) of 0.7 and discounting any benefit from scrap steel entering the product system in modules A1–A3.

Modules declared, geographical scope, share of specific data (in GWP-GHG results) and data variation (in GWP-GHG results):

	Product stage			Construction process stage		Use stage							End of life stage				Resource recovery stage
	Raw material supply			Transport	Construction installation	Use	Maintenance	Repair	Replacement	Refurbishment	Operational energy use	Operational water use	De-construction demolition	Transport	Waste processing	Disposal	Reuse-Recovery-Recycling-potential
Module	A1	A2	A3														
Modules declared	X	X	X	ND	X	ND	ND	ND	ND	ND	ND	ND	X	X	X	X	X
Geography	UA	UA	UA	ND	EU	ND	ND	ND	ND	ND	ND	ND	GLO	GLO	GLO	GLO	GLO
Specific data used	38 %			-	-	-	-	-	-	-	-	-	-	-	-	-	-
Variation – products	NA			-	-	-	-	-	-	-	-	-	-	-	-	-	-
Variation – sites	17,2%			-	-	-	-	-	-	-	-	-	-	-	-	-	-

Description of the system boundary (X = Included in LCA; ND = Not declared; NR = Not relevant)



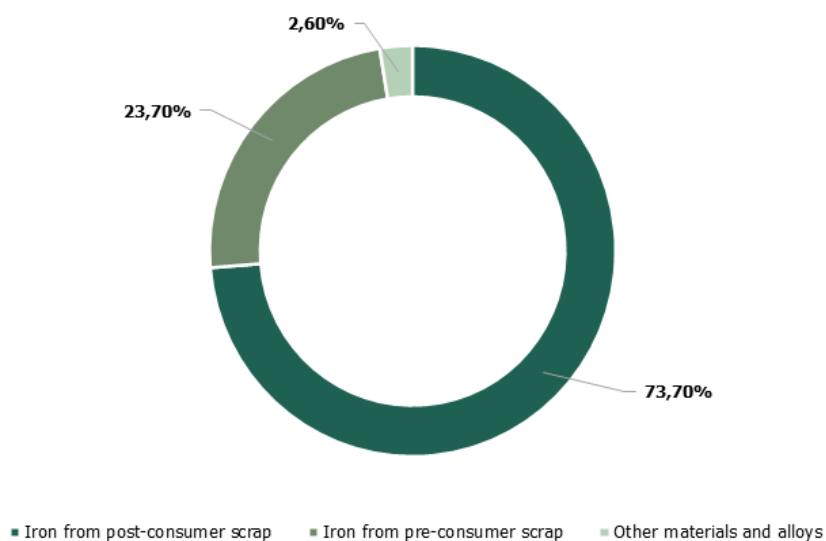
CONTENT INFORMATION

Product components	Weight, kg	Pre-consumer material, weight-%	Post-consumer material, weight-%	Biogenic material, weight-% and kg C/kg
Iron from post-consumer scrap	737	-	100%	-
Iron from pre-consumer scrap	237	100%	-	-
Other iron and alloy sources	26	-	-	-
TOTAL	1000	23.7%	73.7%	-

Packaging materials	Weight, kg	Weight-% (versus the product)	Weight biogenic carbon, kg C/kg
Wood pallets	1.159	0.12%	0.58
Plastic caps and plugs	0.778	0.078%	-
Steel straps	0.194	0.02%	-
Nylon slings	0.278	0.03%	-
TOTAL	2.4	0.25%	0.58

The product does not contain any hazardous substance listed on the "Candidate List of Substances of Very High Concern (SVHC) for Authorization" in amounts greater than 0.1% (1000 ppm).

Note on post-consumer material: "Steel low-alloyed electric" is used to model input raw material, according to Ecoinvent. This process produces secondary steel. Only scrap is used as iron-bearing input."



Total metal scrap (including pre-consumer and post-consumer scrap) in the product is 97.4%.

RESULTS OF THE ENVIRONMENTAL PERFORMANCE INDICATORS

The following results represent the weighted average impact between the two production sites considering production volumes.

Mandatory impact category indicators according to EN 15804

Results per functional or declared unit								
Indicator	Unit	A1-A3	A5	C1	C2	C3	C4	D
GWP-fossil	kg CO ₂ eq.	1.37E+03	5.57E-01	5.88E+01	1.61E+01	0.00E+00	1.36E+00	-1.89E+01
GWP-biogenic	kg CO ₂ eq.	-1.13E+00	2.19E+00	2.53E-03	5.99E-04	0.00E+00	1.11E-04	-2.10E-02
GWP-luluc	kg CO ₂ eq.	1.25E+00	2.82E-06	2.02E-03	3.90E-04	0.00E+00	5.55E-05	-5.96E-03
GWP-total	kg CO ₂ eq.	1.37E+03	2.75E+00	5.88E+01	1.61E+01	0.00E+00	1.36E+00	-1.89E+01
ODP	kg CFC 11 eq.	2.48E-05	6.68E-10	9.25E-07	3.24E-07	0.00E+00	2.01E-08	-1.70E-08
AP	mol H ⁺ eq.	5.59E+00	2.36E-04	5.49E-01	3.87E-02	0.00E+00	1.23E-02	-5.01E-02
EP-freshwater	kg P eq.	5.14E-01	1.36E-06	4.80E-04	1.15E-04	0.00E+00	4.10E-05	-1.39E-04
EP-marine	kg N eq.	1.28E+00	3.51E-04	2.58E-01	1.47E-02	0.00E+00	5.61E-03	-9.25E-03
EP-terrestrial	mol N eq.	1.19E+01	1.15E-03	2.83E+00	1.61E-01	0.00E+00	6.14E-02	-9.96E-02
POCP	kg NMVOC eq.	4.89E+00	3.47E-04	8.42E-01	6.78E-02	0.00E+00	1.86E-02	-3.53E-02
ADP-minerals&metals*	kg Sb eq.	9.05E-04	6.31E-09	2.46E-06	5.25E-07	0.00E+00	5.37E-08	-1.35E-04
ADP-fossil*	MJ	2.14E+04	4.14E-01	7.74E+02	2.10E+02	0.00E+00	1.74E+01	-2.25E+02
WDP*	m ³	9.97E+02	-2.00E-04	6.11E-01	8.91E-02	0.00E+00	1.58E-02	4.06E+02
Acronyms	GWP-fossil = Global Warming Potential fossil fuels; GWP-biogenic = Global Warming Potential biogenic; GWP-luluc = Global Warming Potential land use and land use change; ODP = Depletion potential of the stratospheric ozone layer; AP = Acidification potential, Accumulated Exceedance; EP-freshwater = Eutrophication potential, fraction of nutrients reaching freshwater end compartment; EP-marine = Eutrophication potential, fraction of nutrients reaching marine end compartment; EP-terrestrial = Eutrophication potential, Accumulated Exceedance; POCP = Formation potential of tropospheric ozone; ADP-minerals&metals = Abiotic depletion potential for non-fossil resources; ADP-fossil = Abiotic depletion for fossil resources potential; WDP = Water (user) deprivation potential, deprivation-weighted water consumption							

* Disclaimer. The results of modules A1-A3 should not be used without taking into account the results of module C.

** The results of this environmental impact indicator shall be used with care as the uncertainties of these results are high or there is limited experience with the indicator.

*** The estimated impact results are only relative statements, which do not indicate the endpoints of the impact categories, exceeding threshold values, safety margins and/or risks.

Additional mandatory and voluntary impact category indicators

Results per functional or declared unit								
Indicator	Unit	A1-A3	A5	C1	C2	C3	C4	D
GWP-GHG ¹	kg CO ₂ eq.	1.37E+03	5.62E-01	6.08E+01	1.91E+01	0.00E+00	2.38E+00	-4.20E+02

Resource use indicators

Results per functional or declared unit								
Indicator	Unit	A1-A3	A5	C1	C2	C3	C4	D
PERE	MJ	2.17E+03	1.86E+01	1.70E+00	7.28E-01	0.00E+00	7.68E-02	-3.76E+01
PERM	MJ	1.86E+01	-1.86E+01	0.00E+00	0.00E+00	0.00E+00	0.00E+00	0.00E+00
PERT	MJ	2.19E+03	4.56E-03	1.70E+00	7.28E-01	0.00E+00	7.68E-02	-3.76E+01
PENRE	MJ	2.14E+04	1.49E+01	7.74E+02	2.10E+02	0.00E+00	1.74E+01	-2.25E+02
PENRM	MJ	1.44E+01	-1.44E+01	0.00E+00	0.00E+00	0.00E+00	0.00E+00	0.00E+00
PENRT	MJ	2.14E+04	4.14E-01	7.74E+02	2.10E+02	0.00E+00	1.74E+01	-2.25E+02
SM	kg	9.74E+02	0.00E+00	0.00E+00	0.00E+00	0.00E+00	0.00E+00	0.00E+00
RSF	MJ	0.00E+00	0.00E+00	0.00E+00	0.00E+00	0.00E+00	0.00E+00	0.00E+00
NRSF	MJ	0.00E+00	0.00E+00	0.00E+00	0.00E+00	0.00E+00	0.00E+00	0.00E+00
FW	m ³	2.99E+01	3.21E-04	2.43E-02	5.38E-03	0.00E+00	6.04E-04	-4.26E-01
Acronyms	PERE = Use of renewable primary energy excluding renewable primary energy resources used as raw materials; PERM = Use of renewable primary energy resources used as raw materials; PERT = Total use of renewable primary energy resources; PENRE = Use of non-renewable primary energy excluding non-renewable primary energy resources used as raw materials; PENRM = Use of non-renewable primary energy resources used as raw materials; PENRT = Total use of non-renewable primary energy re-sources; SM = Use of secondary material; RSF = Use of renewable secondary fuels; NRSF = Use of non-renewable secondary fuels; FW = Use of net fresh water							

¹This indicator accounts for all greenhouse gases except biogenic carbon dioxide uptake and emissions and biogenic carbon stored in the product. As such, the indicator is identical to GWP-total except that the CF for biogenic CO₂ is set to zero.

Waste indicators

Results per functional or declared unit								
Indicator	Unit	A1-A3	A5	C1	C2	C3	C4	D
Hazardous waste disposed	kg	9.32E-01	3.66E-06	5.31E-03	1.39E-03	0.00E+00	1.15E-04	-2.45E-04
Non-hazardous waste disposed	kg	2.14E+01	8.74E-01	2.21E-02	6.24E-03	0.00E+00	5.00E+02	-8.79E-03
Radioactive waste disposed	kg	7.51E-02	7.90E-08	3.95E-05	1.97E-05	0.00E+00	1.07E-06	-1.07E-05

Output flow indicators

Results per functional or declared unit								
Indicator	Unit	A1-A3	A5	C1	C2	C3	C4	D
Components for re-use	kg	0.00E+00	2.00E-01	0.00E+00	0.00E+00	5.00E+02	0.00E+00	0.00E+00
Material for recycling	kg	7.45E+01	0.00E+00	0.00E+00	0.00E+00	0.00E+00	0.00E+00	0.00E+00
Materials for energy recovery	kg	0.00E+00	1.20E+00	0.00E+00	0.00E+00	0.00E+00	0.00E+00	0.00E+00
Exported energy, electricity	MJ	3.22E-02	0.00E+00	0.00E+00	0.00E+00	0.00E+00	0.00E+00	0.00E+00
Exported energy, thermal	MJ	5.99E-02	0.00E+00	0.00E+00	0.00E+00	0.00E+00	0.00E+00	0.00E+00



ADDITIONAL INFORMATION

Product processing/Installation

The use of Interpipe Niko Tube, LLC products takes place directly at the installation site as well as in processing plants in the region of the future place of use. Installation is carried out by the customer in accordance with the valid standards and guidelines of the respective place of use.

Packaging

The products of Interpipe Niko Tube, LLC are always delivered to the customer unpacked. A small number of short pieces, accessories and couplings can be delivered to the customer in wooden boxes. Steel straps or wooden stacks are used for fastening to transport the products or to secure the load.

Condition of use

During the use of the steel pipe products, no changes in the material quality are to be expected if used as intended. Maintenance and inspection requirements depend on the design of the material as well as its place of use.

Environment and health during use

During the use of the steel pipe products, no effects on human and animal health and no harmful emissions to air, soil and water are expected.

Reference service life

Due to the variety of applications and their stresses (oil and gas, industrial pipes), Interpipe Niko Tube, LLC does not specify a reference service life for steel pipe products. Furthermore, the service life of the steel pipes is influenced by the respective installation parameters and the environmental conditions.

Extraordinary effects

Fire / Fire protection

Steel pipes are not flammable. No flammable gases or vapours escape.

Water

No negative consequences for the environment are expected under the influence of water (e.g. floods).

Mechanical destruction

Unpredictable mechanical impacts on the declared product have no consequences on the environment due to the plastic deformability of steel.

Re-use phase

The declared products consist of 100 % steel (without packaging) and can be reused or recycled in the steel industry as a valuable secondary raw material. Steel is a permanent material that can be recycled as often as required.

Disposal

The declared product can be fully reused or recycled at its end of life, depending on the quality characteristics and intended reuse. According to the European Waste Catalogue, the waste code is 17 04 05 (iron and steel).

Further information

Further information on the product is available on the website at <https://interpipe.biz/en/>

INTERPIPE ENVIRONMENTAL MANAGEMENT

Environment protection and minimization of negative impact are among the key priorities of Interpipe.

The company's management approach to environment protection is outlined in its Policies on Health, Safety, and Environment, which are designed individually for each plant and include commitments for enhancement of the environmental performance of technologies, the conservation and optimal use of water resources, land restoration, emission reduction, and waste management.

The company applies a precautionary principle to the risk management of its environmental impact. Every year the company's plants assess their impact on various areas of the environment and identify key environmental aspects that require special attention.

The company assumes the obligations to comply with the requirements of legislative and regulatory acts in the field of environmental protection in Ukraine and provisions of ISO 14001:2015 standard.

Our main environmental targets are:

- to reduce the risks of negative impacts by ensuring comprehensive monitoring of emissions, discharges, and soil conditions
- to reduce the consumption of natural gas
- to carry out environmental protection measures in the form of capital repairs and cleaning and ensuring the efficient operation of environment protection equipment (dust-trapping and wastewater processing equipment)



INTERPIPE CONTINUOUSLY SUPPORTS LOCAL COMMUNITIES

Interpipe Group of companies builds mutually beneficial partnerships with local communities to achieve common long-term goals. The Company provides jobs, takes into account the opinions and requests of the community representatives when implementing the Group's business projects, and invests in the development of social infrastructure.



Creating an ecosystem of technical education

Interpipe recognizes the importance of quality engineering education for the development of the modern industry. Therefore, the Company encourages schoolchildren to choose technical specialties at universities and vocational schools. Interpipe initiates and actively supports STEM education projects in the Dnipro region, Ukraine, educational institutions, as well as other popular scientific and educational events for secondary school and university students.

Since 2018, Interpipe has been investing in the creation of a mechatronics ecosystem in Dnipro to train specialists. The educational and technical ecosystem combines modern educational laboratories of mechatronics, educational programs and competitions on the school basis and the Dnipro University of Technology. By 2024, we reconstructed and opened two mechatronics laboratories at the university, five mechatronics classrooms, four labour training rooms in local schools, and renovated rocket-modelling club at the Children's Creativity House.



Systemic support to the hospitals in Dnipro region

Interpipe continuously supports local hospitals. During COVID pandemic Interpipe, together with the foundations of Olena and Viktor Pinchuk, allocated more than \$10 million for the fight against coronavirus. Part of these funds was donated to the Monsters Corporation Charitable Foundation for assistance at the national level and the purchase of artificial lung ventilation apparatus for various regions of Ukraine.

Since the beginning of the full-scale Russian invasion of Ukraine, the Interpipe Group of companies, have been purchasing medicines for hospitals receiving evacuees and the warzone victims. We donate artificial blood products, anti-septics, painkillers and other medicines, bandages and other medical supplies to hospitals and other medical institutions. In addition to medicines, Interpipe helps hospitals with equipment by purchasing operating and manipulation tables, functional beds, electrocoagulants, ventilators, oxygen concentrators and other auxiliary equipment.



Systematic targeted support for the Group's employees during the Russian invasion in Ukraine

Supporting local communities remains a priority for the Group despite Russia's full-scale invasion of Ukraine. Interpipe works with local authorities and charitable foundations to assist local communities during martial law. We ensure the opening of invincibility points and bomb shelters, and provide emergency assistance to communities in the regions where the Group operates.

The Group is committed to the safety of its employees. Since the beginning of the war, bomb shelters were opened and equipped at all enterprises. Durable mobile shelters were installed directly in the Nikopol enterprises' production facilities (which are currently in the combat zone). Employees use them under the threat of artillery and missile raids.



Systematic targeted support for the Group's employees during the Russian invasion in Ukraine

In 2022-24, the Group expanded the Corporate Headquarters for Assistance to Mobilized Employees, established at the beginning of the Russia's full-scale invasion of Ukraine. Since then, more than 1,000 people from Interpipe's companies have been mobilized. The headquarters has 5 coordinators, each of whom keeps in touch with 200 mobilized and demobilized colleagues. Interpipe Group had already handed over several thousand parcels with all the necessary items to our employees serving in the ranks of the Armed Forces of Ukraine and their military units, including cars, sets of seasonal military clothing and thermal underwear, seasonal shoes, medical kits, protective equipment etc.



Communication with the demobilized and the veterans became a separate vector of Interpipe's activity. The Group's top management has approved of the decision to create a clear algorithm and a favorable environment for the return of the servicemen to civilian life. As part of the headquarters for assistance to the mobilized, a comprehensive program is being developed to support and adapt the veterans at Interpipe's enterprises.

A separate vector of support in the Nikopol region was dealing with the consequences of the destruction of the Kakhovka hydroelectric power station blown up by the Russian troops. Faced with a critical drop in water levels and water supply problems, Interpipe ensured a regular supply of the service water to Nikopol and the Nikopol region and donated more than 70 tanks for the drinking and service water storage. The Group also took preventive measures to prepare for the deteriorating radiation levels and leaks at the Enerhodar NPP, including the underground bomb shelters improvement and emergency drinking water supplies preparation.



For the second year in a row, some 90 children of employees and their families from the Nikopol community were evacuated to a sanatorium in the northern part of the Dnipropetrovsk region. Interpipe fully finances the needed accommodation, food, and medical support for the displaced families. To support the educational process of the evacuees, the teacher service is provided. In addition, the sanatorium employs an organizer who not only plans and organizes leisure activities for children and their families, but also helps to look after children who have left home without any adult supervision. The sanatorium regularly hosts entertainment events, children's parties and workshops, especially during the holidays.

Key focus areas included support to the Ukrainian Armed Forces and military rehabilitation, assistance to the internally displaced persons and civilians affected by the hostilities, support to the medical institutions and the promotion of Ukraine's interests in the world, as well as attracting and strengthening international support for Ukraine during the war. Being a responsible business, we contribute to Ukraine's victory by supporting our military and doctors in their urgent needs.

DIFFERENCES VERSUS PREVIOUS VERSIONS

This is the second version of this EPD. It includes changes in the declaration of post-consumer material, secondary material indicator, and adjustments to the LCA results based on those factors.

REFERENCES

- General Programme Instructions of the International EPD® System. Version 4.0.
- PCR 2019:14. Construction Products. Version 1.3.4
- ISO 14040:2006: Environmental Management-Life Cycle Assessment-Principles and framework.
- ISO 14044:2006/Amd 2:2020 Environmental management. Life Cycle Assessment. Requirements and guidelines
- ISO 14025:2006 Environmental labels and declarations. — Type III environmental declarations — Principles and procedures
- EN 15804:2012+A2:2019/AC:2021 – Sustainability of construction Works – Environmental product declarations – Core rules for the product category of construction products.
- Ecoinvent v3.10 Database.
- Fazio, Simone, et al. Guide for EF-compliant data sets (Version 2.0). Publications Office of the European Union, 2020. doi:10.2760/537292.
- LCA Project Report – Interpipe., v2.0, May 2025.



 **EPD**®
THE INTERNATIONAL EPD® SYSTEM