

Our PowerTOP Xtra Family

Now easy to switch

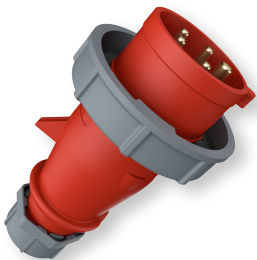
The future belongs to PowerTOP Xtra

The plugs and connectors of our PowerTOP Xtra family in 16 and 32 A replace the products of the older AM-TOP and PowerTOP series. We've prepared a table to help you transition. The older article numbers are listed on the left, and the new ones that have replaced them are on the right. This makes it quick and easy for you to find the right new products.

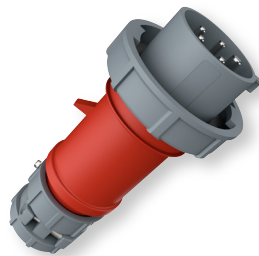
Plugs and sockets for all applications

The PowerTOP Xtra has a lot to offer: special ergonomic designs and robust materials ensure secure handling and long product lives. Thanks to smart features, the plug devices can be easily assembled with minimal tools. Proven connection technologies guarantee simple installation and secure connections. The models with IP67 / IP69 protection remain waterproof even during submersion and high-pressure cleaning. All PowerTOP Xtra connectors feature our ingenious X-CONTACT contact sleeve technology, which makes it especially easy to connect and disconnect plugs.

AM-TOP



PowerTOP









PowerTOP Xtra









NEW



Previous types (IP67)

	A	P	110 V	230 V	400 V	500 V	50 - 500 V
Plugs							
AM-TOP	16	3	277	278			
	16	4		281	282	283	
	16	5			288		
	32	3		290			
	32	4		293	294	295	
	32	5			300		
AM-TOP	16	3			279		2652ZA
	16	4	280				
	16	5	286	287			
	32	3	289		291		
	32	4	292				297
	32	5	298	299		2021	
PowerTOP	16	3	3794	3796	3799	3797	
	16	4		3811	3809	3810	
	16	5		3823	3821	3868	3824
	32	3	3829	3830	3832		
	32	4		3844	3841	3842	
	32	5		3855	3853		
Connectors							
AM-TOP	16	3	539	540			
	16	4		543	544	545	
	16	5			550		
	32	3		552			
	32	4		555	556	557	
	32	5			562		
AM-TOP	16	3			541		
	16	4	542				
	16	5		549			
	32	3	551	553			
	32	4	554				559
	32	5	560	561		2143	
PowerTOP	16	3	3859	3860			
	16	4		3873	3871	3872	
	16	5	3879	3883	3881	3882	
	32	3	3887		3888		
	32	4		3899	3897	3898	
	32	5		3909	3907		

New types (IP67 / IP69)

	A	P	110 V	230 V	400 V	500 V	50 - 500 V
Plugs							
PowerTOP Xtra	16	3	13619	13620			
	16	4		13621	13622	13623	
	16	5			13624		
	32	3		13625			
	32	4		13626	13627	13628	
	32	5			13629		
PowerTOP Xtra R	16	3			13632		13634
	16	4	13635				
	16	5	13641	13642			
	32	3	13649		13651		
	32	4	13652				13657
	32	5	13658	13659		13661	
PowerTOP Xtra R	16	3	13630	13631	13632	13633	
	16	4		13636	13637	13638	
	16	5		13642	13643	13644	13645
	32	3	13649	13650	13651		
	32	4		13653	13654	13655	
	32	5		13659	13660		
Connectors							
PowerTOP Xtra	16	3	14619	14620			
	16	4		14621	14622	14623	
	16	5			14624		
	32	3		14625			
	32	4		14626	14627	14628	
	32	5			14629		
PowerTOP Xtra R	16	3			14632		
	16	4	14635				
	16	5		14642			
	32	3	14649	14650			
	32	4	14652				14657
	32	5	14658	14659		14661	
PowerTOP Xtra R	16	3	14630	14631			
	16	4		14636	14637	14638	
	16	5	14641	14642	14643	14644	
	32	3	14649		14651		
	32	4		14653	14654	14655	
	32	5		14659	14660		

Order number in bold: Market launch first quarter 2025 (16 A, 4 p and 32 A, 3 p, 4 p)