

Prevex® Smartloc™

The smartest water trap for kitchen sinks.



PREVEX 
ALL ABOUT WATER TRAPS

Prevex® Smartloc™

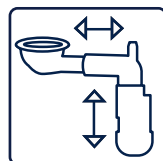
A space-saving solution.

Packed with smart technical features, Smartloc is the ultimate water trap for any kitchen. This water trap features clever improvements, such as smooth oval pipes to prevent residue build-up. In addition, Smartloc is extremely easy to clean.



Easy to clean

Equipped with a special plug for cleaning, Smartloc is easier to clean than any other kitchen water trap. In addition, the rigid, oval overflow pipes prevent residue build-up.



Adjustable

The adjustable, telescopic arms make Smartloc extremely flexible and space-saving. Installed on the back wall of the kitchen cabinet, Smartloc takes up only 55 mm of space.



Flexible modules

Smartloc can be expanded with a washing machine module. In addition, Smartloc can also be transformed from a 1-bowl system to a 2-bowl system with just a click.

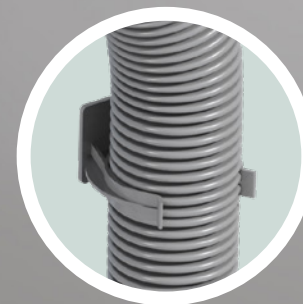


Pre-assembled

The seals in Smartloc are injection moulded for guaranteed durability and watertightness. With less loose parts, Smartloc is fast and easy to install, and the risk for leaks is minimised.

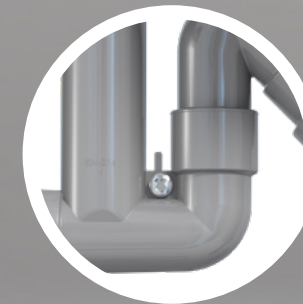
Space-saving solutions

The water trap is easy to adjust both horizontally and vertically. The strainers for the 2-bowled Smartloc model can be placed on the same level to create even more space.



Pipe clamp

This secures the space-saving installation of the outlet pipe.



Attachment to cabinet

Fixing points allow the trap to be secured to the back of a cabinet in a robust yet space-saving way.

Technical specifications



MagneticCover-compatible
The strainers are compatible with the elegant Prevox MagneticCover.



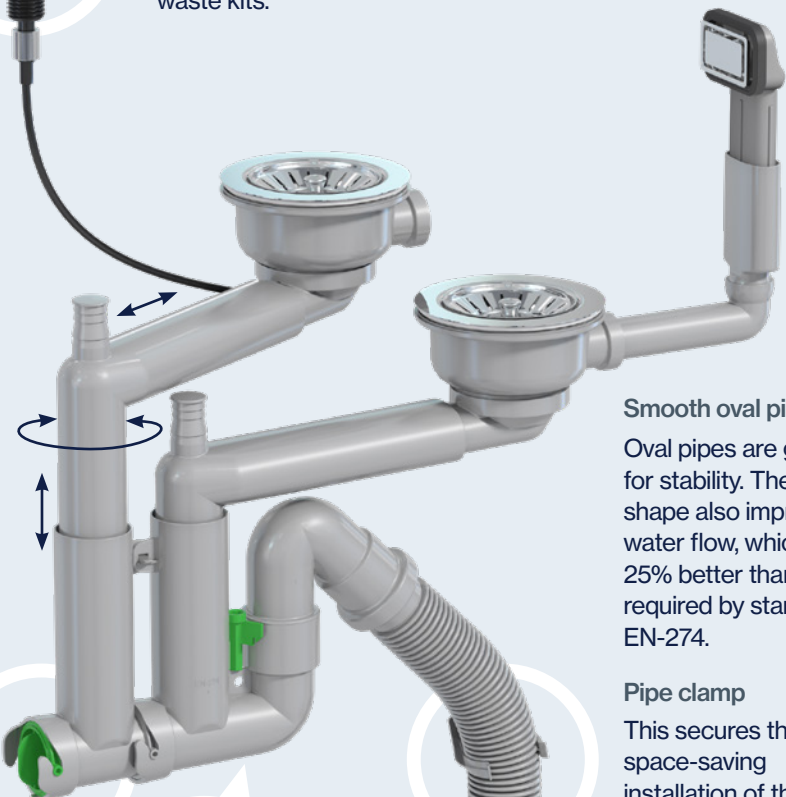
Remote
The waste kits can easily be replaced with remote-controlled waste kits.



Rigid overflow
The smooth-surfaced pipe improves flow and prevents residue buildup.

Telescopic adjustments

The perfect fit is easy to achieve with pipes that individually adjust telescopically both vertically and horizontally. In the 2-bowled trap space is saved by installing the arms to the same level.



Smooth oval pipes
Oval pipes are great for stability. The shape also improves water flow, which is 25% better than the required by standard EN-274.

Pipe clamp
This secures the space-saving installation of the outlet pipe.

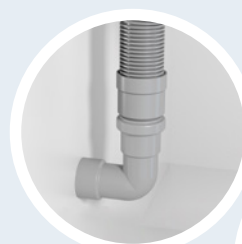
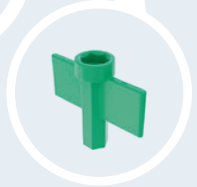
Handy drain plug

Cleaning the trap is easy with this no-tools-needed drain plug.



The only tool you need for assembly

Keep your strainer tool safely at hand by storing it in the built-in holder.



Smartloc can be both wall- and floor-mounted.

Outlet pipe adapter
40/50 mm sewer pipe connection.

Prevox[®] **Smartloc**[™]

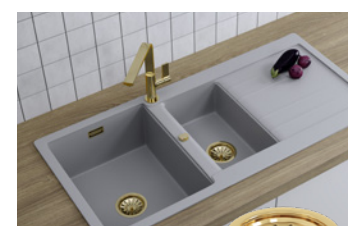


Coloured accessories for trendy kitchens

Our kits include a strainer, a remote knob as well as an overflow cover in a uniform colour.



Copper



Light gold



Gold



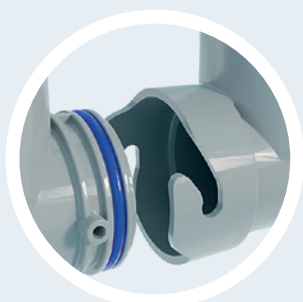
Gun metal



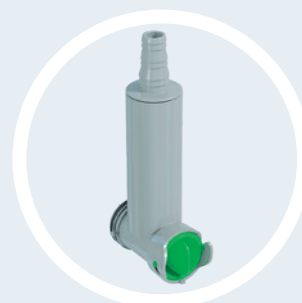
Black matte



Durable gaskets
2-K-injected gaskets are guaranteed to be leakage-free.



Easy-to-use quick coupler
This transforms a 1-bowl trap into a 2-bowled trap with a click.



Additional appliance connection
For 1-bowl water trap.





sales@prevex.com

www.prevex.com

Oy PreveX Ab,
FI-66900 Nykarleby, Finland
Tel. +358 (0)6 781 8000

