

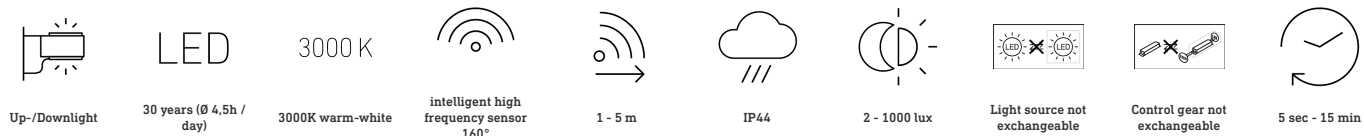
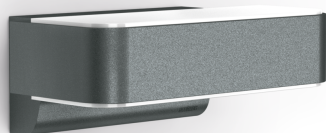
Sensor-switched LED outdoor light

# L 810 SC

Anthracite

EAN 4007841 065706

Article number 065706



## Function description

The most modern outdoor light in the world. Designer sensor-switched outdoor light L 810 SC with invisible high-frequency sensor, ideal for building entrances and fronts of buildings, 9,8 W STEINEL LED lighting system, 679 lm, 160° coverage angle, reach from 1 - 5 m, for stylish up and downlighting, includes soft light start and optional manual override for 4 hours. Wirelessly interconnectable by Bluetooth and adjustable and controllable via free app.

## Technical specifications

Dimensions (L x W x H)	145 x 230 x 91 mm
With lamp	Yes, LED lamp
Manufacturer's Warranty	3 years
Settings via	App, Bluetooth
With remote control	No
Version	Anthracite
PU1, EAN	4007841065706
Application, place	Outdoors
Application, room	garden, front door, courtyard & driveway, all round the building, terrace / balcony
Colour	Anthracite
includes sheet of self-adhesive numbers	No
Installation site	wall
Impact resistance	IK03
IP-rating	IP44
Protection class	II

Photo-cell controller	Yes
Transmitter range	30 m
Transmitter power	< 1 mW
Luminous flux total product	679 lm
Measured luminous flux (360°)	679 lm
Total product efficiency	69 lm/W
Colour temperature	3000 K
Lamp	LED cannot be replaced
Service life LED L70B50 (25°)	> 60000 h
Base	without
LED cooling system	Active and Passive Thermo Control
Soft light start	Yes
Continuous light	selectable, 4h
Functions	Motions sensor
Twilight setting	2 – 2000 lx
Time setting	5 s – 60 Min.
Basic light level function	Yes

# L 810 SC

Anthracite  
EAN 4007841 065706  
Article number 065706



## Technical specifications

Ambient temperature	-20 – 40 °C
Housing material	Aluminium
Cover material	Plastic, opal
Mains power supply	220 – 240 V / 50 – 60 Hz
Output	9,8 W
Mounting height max.	2,50 m
Slave modeselectable	Yes
Sneak-by guard	Yes
Capability of masking out individual segments	No
Electronic scalability	Yes
Mechanical scalability	No
Reach, detail	Detection zone adjustable on 2 axes
Reach, radial	r = 5 m (35 m <sup>2</sup> )
Reach, tangential	r = 5 m (35 m <sup>2</sup> )

Basic light level function time	1-30 min, all night
Main light adjustable	50 - 100 %
Interconnection	Yes
Type of interconnection	Master/master
Basic light level function in per cent	10 – 50 %
Basic light level function percentage, from	10 %
Basic light level function percentage, up to	50 %
Interconnection via	Bluetooth
Colour Rendering Index CRI	= 82
Optimum mounting height	2 m
Detection angle	160 °

Sensor-switched LED outdoor light

# L 810 SC

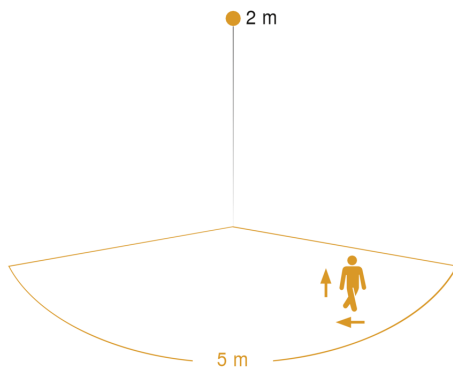
Anthracite

EAN 4007841 065706

Article number 065706



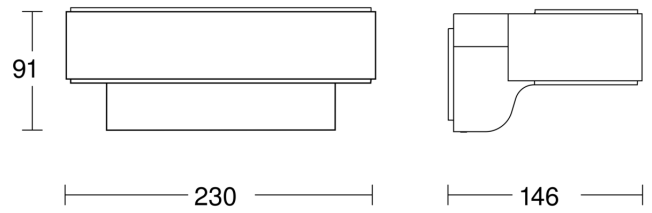
## Detection Zone



Mögliche Montagehöhe: 1,80 m – 2,50 m

Orange: radial und tangential

## Dimension Drawing



## Circuit diagram Bluetooth

