

# Innovatiivinen ja helposti asennettava ratkaisu kaikkiin projekteihin, joissa valolla on todella merkitystä

## CoreLine Panel

CoreLine Panel Generation 4 täyttää CoreLine-lupauksen innovatiivisista, helppokäyttöisistä ja laadukkaista LED-valaistuspaneeleista. Tämä LED-ratkaisujen mallisto sopii suoraan nykyisten yleisvalaisimien paikalle. CoreLine LED Panelin Multicolor/Lumen -ominaisuuden ansiosta valaisin sisältää useita väri- ja valovirtavaihtoehtoja: kaksi valkoisen valon väriä ja neljä valovirtavaihtoehtoa - kaikki yhdessä LED-paneelivalaisimessa. Uuden liittimen ansiosta näiden RC123V-LED-paneelien asennus on todella helppoa ja nopeaa.

### Hyödyt

- Entistä joustavampi: lämmin tai viileä valo, useita valotasoja käyttökohteiden, esim. toimistojen tai koulujen, eri alueita varten
- Entistä yksinkertaisempi ja nopeampi asennus uudella pikaliittimellä
- Alenna käyttökustannuksia energiansäästöllä ja pitkällä käyttöiällä

# CoreLine Panel

## Ominaisuudet

- Multi-color / lumen: 3 000 K ja 4 000 K, valovirtavaihtoehdot 3 400 – 4 300 luumienia yhdessä valaisimessa
- Jopa 125 lm/W ja 50 000 tunnin käyttöikä L80
- Useita liitäntälaitteita: virtakytkin (PSU), himmennys (DALI) ja integroitu langaton yhteys (Interact Ready – toimii uuden Interact Pro -ohjausjärjestelmän kanssa)
- Valinnaiset tuoteversiot: turvalaistutus (EL) sekä Wieland-liittimet (W).

## Käyttökohteet

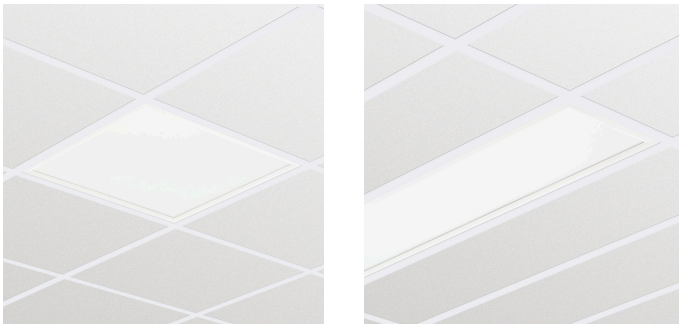
- Toimistot (käytävät, työtilat, vastaanottoalue, kokoushuoneet, WC-tilat)
- Myymälät (supermarketit, vaateliikkeet, elintarvikeliikkeet)
- Terveystieteiden (potilashuoneet, käytävät, työtilat, vastaanottoalueet)
- Oppilaitokset (luokahuoneet, käytävät, työtilat, WC-tilat)

## Spesifikaatiot

<b>Tyyppi</b>	RC125B (moduulin koko 600 mm) RC126B (moduulin koko 625 mm)
<b>Kattotyyppi</b>	Näkyvä T-profilikatko
<b>Kattoristikko</b>	Moduulin pituus: 600 mm Moduulin pituus: 625 mm
<b>Valonlähde</b>	Ledimoduuli, ei vaihdettavissa
<b>Teho (+/-10 %)</b>	41 W
<b>Keilakulma</b>	110°
<b>Valovirta</b>	3 400 lm
<b>Väriämpötila</b>	3 000 K 4 000 K
<b>Värintoistoindeksi</b>	> 80 Ra
<b>Keskimääräinen käyttöikä – L70B50</b>	50 000 tuntia
<b>Keskimääräinen käyttöikä – L80B50</b>	30 000 tuntia

<b>Keskimääräinen käyttöikä – L90B50</b>	15 000 tuntia
<b>Ohjaimen vikamäärä</b>	0,38 % 5 000 tunnissa
<b>Käyttölämpötila</b>	+10–+40 °C
<b>Virtalähde</b>	Sisäänrakennettu
<b>Jännite</b>	230 tai 240 V / 50–60 Hz
<b>Materiaali</b>	Runko: sinkkipäällystettyä terästä Kehys ja hajotin: muovia Optinen kupu: PMMA
<b>Väri</b>	Valkoinen
<b>Liitäntä</b>	Pistoliitin (PI) tai liitin vedonpoistimella (PIP)
<b>Huolto</b>	Optinen moduuli suljettu koko käyttöajan ajaksi. Sisäpuolen puhdistusta ei tarvita.
<b>Asennus</b>	Erikseen; paljaan katon ristikoihin Läpijohto ei mahdollinen
<b>Huomautukset</b>	Turvakaapeli sisältyy toimitukseen

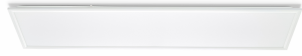
## Versions



CORELINE PANEL

# CoreLine Panel

## Versions

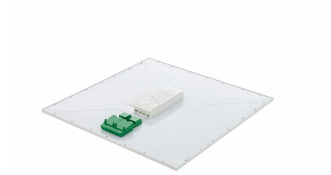


### CORELINE PANEL

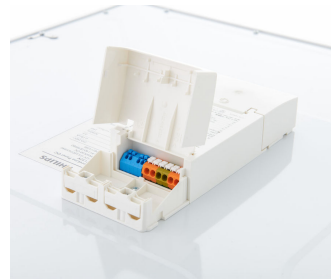
## Tuotetiedot



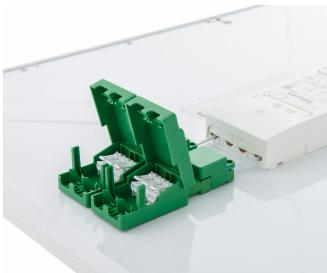
Edge View



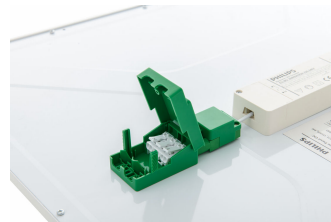
PSD backcover Square



Dimming (PSD) Driver



Dimming (PSD) Connector



On/off (PSU) Connector

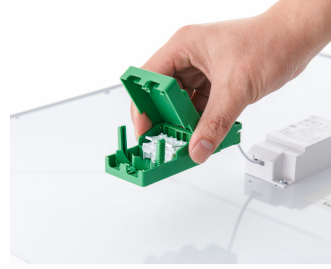
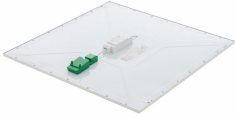


On/off (PSU) Driver

# CoreLine Panel

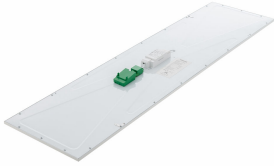
## Tuotetiedot

PSU backcover Square

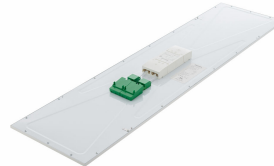


On/off (PSU) Connector with hand

PSU backcover Rectangular



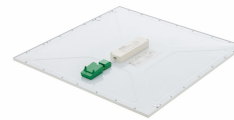
PSD backcover Rectangular



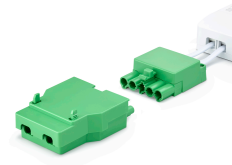
On/off Multicolour/Lumen (PSU) Driver



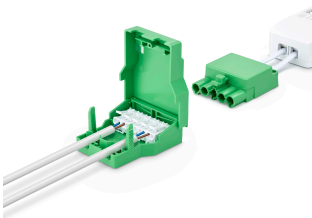
PSU MultiColour/Lumen backcover Square



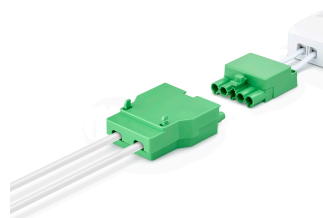
Coreline panel G5\_ PSD connector Start\_Step 1



Coreline panel G5\_ PSD connector Wired\_Step 3

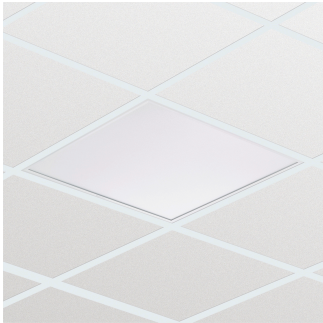


Coreline panel G5\_ PSD connector Closed\_Step 4



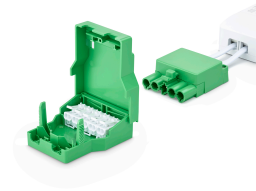
# CoreLine Panel

## Tuotetiedot



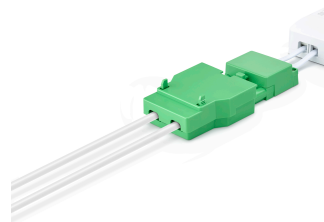
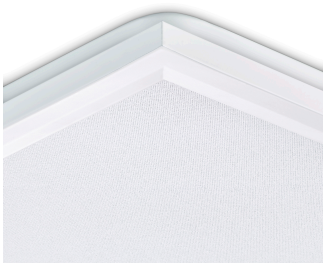
Coreline panel G5 Recessed Ceiling

Coreline panel G5\_ PSD connector Open\_Step 2



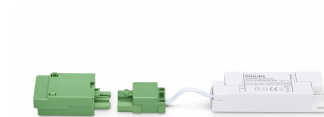
Coreline panel G5 optical cover

Coreline panel G5\_ PSD connector Finished\_Step 5



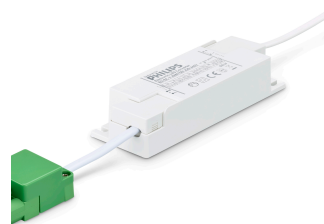
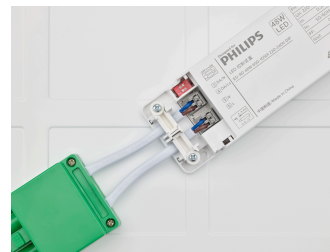
Coreline panel G5 side angle

CoreLine panel Gen 5 - On/off (PSU) driver & Quick Connector



Coreline panel G5 backside PSU driver

Coreline panel G5 PSU driver



# CoreLine Panel

## Tuotetiedot



Coreline panel G5 backside PSD driver



Coreline panel G5 PSD driver Lumenswitch

## Lisätarvikkeet



Ordercode 95397099



Ordercode 95399499



Ordercode 95403899



Ordercode 911401861284,  
911401861384



Ordercode 36268799

## Hyväksyntä ja käyttökohteet

Mek. iskun suojauskoodi IK03

## Yleistä tietoa

Valonlähteen valokeilan kulma - °

CE-merkintä CE-merkintä

Suojausluokka IEC Suojausluokka II

Liitäntälaitte sisältyy toimitukseen Kyllä

ENEC-merkintä ENEC-merkintä

Valonlähde vaihdettavissa Ei

Liitäntälaitteiden määrä 1 yksikkö

## Suorituskyky alussa (IEC-yhteensopiva)

Valovuotoleranssi +/-10%

## Valon tekniset tiedot

Välkyntä 1

## Käyttökohteiden olosuhteet

Order Code	Full Product Name	Ympäristölämpötila-alue	Suurin himmennystaso	Soveltuu satunnaiseen sytytykseen/ sammutukseen
96711600	RC132V G4 LED36S/840 PSU W60L60 OC ELB3	+10 ... +40 °C	1%	Ei sovellettavissa
96732100	RC132V G4 LED36S/840 PSU W60L60 OC W3	+10 ... +40 °C	Ei sovellettavissa	Ei sovellettavissa
96733800	RC132V G4 LED34S/830 PSU W60L60 OC W3	+10 ... +40 °C	Ei sovellettavissa	Ei sovellettavissa
96734500	RC132V G4 LED36S/840 PSD W60L60 OC W5	+10 ... +40 °C	1%	Ei sovellettavissa
97587600	RC132V G4 LED34S/830 WIA W60L60 NOC	+10 ... +40 °C	1%	Ei sovellettavissa
97588300	RC132V G4 LED36S/840 WIA W60L60 OC	+10 ... +40 °C	1%	Ei sovellettavissa
97589000	RC132V G4 LED34S/830 WIA W60L60 OC	+10 ... +40 °C	1%	Ei sovellettavissa
97586900	RC132V G4 LED36S/840 WIA W60L60 NOC	+10 ... +40 °C	1%	Ei sovellettavissa
97595100	RC132V G4 LED43S/840 WIA W60L60 OC	+10 ... +40 °C	1%	Ei sovellettavissa
97597500	RC132V G4 LED43S/840 WIA W60L60 NOC	+10 ... +40 °C	1%	Ei sovellettavissa
97598200	RC132V G4 LED43S/840 WIA W60L60 OC W3	+10 ... +40 °C	1%	Ei sovellettavissa
97599900	RC132V G4 LED36S/840 WIA W60L60 NOC W3	+10 ... +40 °C	1%	Ei sovellettavissa
97600200	RC132V G4 LED34S/830 WIA W60L60 NOC W3	+10 ... +40 °C	1%	Ei sovellettavissa
97601900	RC132V G4 LED36S/840 WIA W60L60 OC W3	+10 ... +40 °C	1%	Ei sovellettavissa
97602600	RC132V G4 LED34S/830 WIA W60L60 OC W3	+10 ... +40 °C	1%	Ei sovellettavissa
97605700	RC132V G4 LED43S/840 WIA W60L60 NOC W3	+10 ... +40 °C	1%	Ei sovellettavissa
97606400	RC132V G4 LED36/840 WIA W60L60 OC TP(a)	+10 ... +40 °C	1%	Ei sovellettavissa
36035500	RC132V G4 LED36S/840 PSU W60L60 NOC	+10 ... +40 °C	Ei sovellettavissa	Ei sovellettavissa
36036200	RC132V G4 LED34S/830 PSU W60L60 NOC	+10 ... +40 °C	Ei sovellettavissa	Ei sovellettavissa
36037900	RC132V G4 LED43S/840 PSU W60L60 NOC	+10 ... +40 °C	Ei sovellettavissa	Ei sovellettavissa
36041600	RC132V G4 LED36S/840 PSU W60L60 OC	+10 ... +40 °C	Ei sovellettavissa	Ei sovellettavissa
36042300	RC132V G4 LED34S/830 PSU W60L60 OC	+10 ... +40 °C	Ei sovellettavissa	Ei sovellettavissa
36045400	RC132V G4 LED36S/840 PSD W60L60 OC	+10 ... +40 °C	1%	Ei sovellettavissa
36046100	RC132V G4 LED34S/830 PSD W60L60 OC	+10 ... +40 °C	1%	Ei sovellettavissa

Order Code	Full Product Name	Ympäristölämpötila-alue	Suurin himmennystaso	Soveltuu satunnaiseen sytytykseen/ sammutukseen
36047800	RC132V G4 LED43S/840 PSD W60L60 OC	+10 ... +40 °C	1%	Ei sovellettavissa
36054600	RC132V G4LED34_43S/ 830_840 PSU W60L60 OC	+10 ... +40 °C	Ei sovellettavissa	Ei sovellettavissa
97590600	RC132V G4 LED36S/840 WIA W30L120 NOC	+10 ... +40 °C	1%	Ei sovellettavissa
97591300	RC132V G4 LED36S/840 WIA W30L120 OC	+10 ... +40 °C	1%	Ei sovellettavissa
97603300	RC132V G4 LED36S/840 WIA W30L120 NOC W3	+10 ... +40 °C	1%	Ei sovellettavissa
97604000	RC132V G4 LED36S/840 WIA W30L120 OC W3	+10 ... +40 °C	1%	Ei sovellettavissa
36040900	RC132V G4 LED36S/840 PSU W30L120 NOC	+10 ... +40 °C	Ei sovellettavissa	Ei sovellettavissa
36044700	RC132V G4 LED36S/840 PSU W30L120 OC	+10 ... +40 °C	Ei sovellettavissa	Ei sovellettavissa
36051500	RC132V G4 LED36S/840 PSD W30L120 OC	+10 ... +40 °C	1%	Ei sovellettavissa
36052200	RC132V G4 LED34S/830 PSD W30L120 OC	+10 ... +40 °C	1%	Ei sovellettavissa
36056000	RC132V G4LED34_43S/ 830_840 PSUW30L120 OC	+10 ... +40 °C	Ei sovellettavissa	Ei sovellettavissa
01368100	RC132V G5 36S/840 PSU W60L60 OC ELB3	0 ... +35 °C	Ei sovellettavissa	Kyllä
01386500	RC132V G5 36S/840 WIA W60L60 OC ELB3	0 ... +35 °C	1%	Kyllä
01387200	RC132V G5 36S/840 WIA W60L60 NOC ELB3	0 ... +35 °C	1%	Kyllä
01394000	RC132V G5 43S/840 WIA W60L60 OC ELB3	0 ... +35 °C	1%	Kyllä
94999700	RC132V G5 34S/830 PSU W60L60 NOC	-10 to +40 °C	Ei sovellettavissa	Kyllä
95000900	RC132V G5 36S/840 PSU W60L60 NOC	-10 to +40 °C	Ei sovellettavissa	Kyllä
95004700	RC132V G5 34S/830 PSU W60L60 OC	-10 to +40 °C	Ei sovellettavissa	Kyllä
95005400	RC132V G5 36S/840 PSU W60L60 OC	-10 to +40 °C	Ei sovellettavissa	Kyllä
95008500	RC132V G5 34S/830 PSD W60L60 OC	-10 to +40 °C	3%	Kyllä
95009200	RC132V G5 36S/840 PSD W60L60 OC	-10 to +40 °C	3%	Kyllä
95010800	RC132V G5 48S/840 PSD W60L60 OC	-10 to +40 °C	3%	Kyllä
95014600	RC132V G5 36S/940 PSU W60L60 NOC	-10 to +40 °C	Ei sovellettavissa	Kyllä
95015300	RC132V G5 36S/940 PSU W60L60 OC	-10 to +40 °C	Ei sovellettavissa	Kyllä

Order Code	Full Product Name	Ympäristölämpötila-alue	Suurin himmennystaso	Soveltuu satunnaiseen sytytykseen/ sammutukseen
95017700	RC132V G5 36S/940 PSD W60L60 OC	-10 to +40 °C	3%	Kyllä
95018400	RC132V G5 43S/940 PSD W60L60 OC	-10 to +40 °C	3%	Kyllä
95019100	RC132V G5 34S/830 PSU W60L60 NOC W3	-10 to +40 °C	Ei sovellettavissa	Kyllä
95020700	RC132V G5 36S/840 PSU W60L60 NOC W3	-10 to +40 °C	Ei sovellettavissa	Kyllä
95022100	RC132V G5 34S/830 PSU W60L60 OC W3	-10 to +40 °C	Ei sovellettavissa	Kyllä
95023800	RC132V G5 36S/840 PSU W60L60 OC W3	-10 to +40 °C	Ei sovellettavissa	Kyllä
95026900	RC132V G5 34S/830 PSD W60L60 OC W5	-10 to +40 °C	3%	Kyllä
95027600	RC132V G5 36S/840 PSD W60L60 OC W5	-10 to +40 °C	3%	Kyllä
95030600	RC132V G5 29_34_40S/830 PSU W60L60 OC	-10 to +40 °C	Ei sovellettavissa	Kyllä
95031300	RC132V G5 31_36_43S/840 PSU W60L60 OC	-10 to +40 °C	Ei sovellettavissa	Kyllä
95035100	RC132V G5 31_36_43S/840 PSU W60L60 NOC	-10 to +40 °C	Ei sovellettavissa	Kyllä
95036800	RC132V G5 29_34_40S/830 PSD W60L60 OC	-10 to +40 °C	3%	Kyllä
95037500	RC132V G5 31_36_43S/840 PSD W60L60 OC	-10 to +40 °C	3%	Kyllä
95040500	RC132V G5 31_36_43S/940 PSD W30L120 OC	-10 to +40 °C	3%	Kyllä
95363500	RC132V G5 34S/830 WIA W60L60 NOC	-10 to +40 °C	1%	Kyllä
95364200	RC132V G5 36S/840 WIA W60L60 NOC	-10 to +40 °C	1%	Kyllä
95366600	RC132V G5 34S/830 WIA W60L60 OC	-10 to +40 °C	1%	Kyllä
95367300	RC132V G5 36S/840 WIA W60L60 OC	-10 to +40 °C	1%	Kyllä
95368000	RC132V G5 43S/840 WIA W60L60 OC	-10 to +40 °C	1%	Kyllä
95372700	RC132V G5 34S/830 WIA W60L60 NOC W3	-10 to +40 °C	1%	Kyllä
95373400	RC132V G5 36S/840 WIA W60L60 NOC W3	-10 to +40 °C	1%	Kyllä
95374100	RC132V G5 43S/840 WIA W60L60 NOC W3	-10 to +40 °C	1%	Kyllä
95375800	RC132V G5 34S/830 WIA W60L60 OC W3	-10 to +40 °C	1%	Kyllä
95376500	RC132V G5 36S/840 WIA W60L60 OC W3	-10 to +40 °C	1%	Kyllä

Order Code	Full Product Name	Ympäristölämpötila-alue	Suurin himmennystaso	Soveltuu satunnaiseen sytytykseen/ sammutukseen
95377200	RC132V G5 43S/840 WIA W60L60 OC W3	-10 to +40 °C	1%	Kyllä
01369800	RC132V G5 36S/840 PSU W30L120 OC ELB3	0 ... +35 °C	Ei sovellettavissa	Kyllä
95007800	RC132V G5 36S/840 PSU W30L120 OC	-10 to +40 °C	Ei sovellettavissa	Kyllä
95012200	RC132V G5 34S/830 PSD W30L120 OC	-10 to +40 °C	3%	Kyllä
95013900	RC132V G5 36S/840 PSD W30L120 OC	-10 to +40 °C	3%	Kyllä
95016000	RC132V G5 36S/940 PSU W30L120 OC	-10 to +40 °C	Ei sovellettavissa	Kyllä
95028300	RC132V G5 34S/830 PSD W30L120 OC W5	-10 to +40 °C	3%	Kyllä
95029000	RC132V G5 36S/840 PSD W30L120 OC W5	-10 to +40 °C	3%	Kyllä
95371000	RC132V G5 36S/840 WIA W30L120 OC	-10 to +40 °C	1%	Kyllä
95378900	RC132V G5 36S/840 WIA W30L120 OC W3	-10 to +40 °C	1%	Kyllä
95002300	RC133V G5 36S/840 PSU W62L62 NOC	-10 to +40 °C	Ei sovellettavissa	Kyllä
95006100	RC133V G5 36S/840 PSU W62L62 OC	-10 to +40 °C	Ei sovellettavissa	Kyllä
95011500	RC133V G5 36S/840 PSD W62L62 OC	-10 to +40 °C	3%	Kyllä
95003000	RC132V G5 36S/840 PSU W30L120 NOC	-10 to +40 °C	Ei sovellettavissa	Kyllä
95365900	RC132V G5 36S/840 WIA W30L120 NOC	-10 to +40 °C	1%	Kyllä

Hyväksyntä ja käyttökohteet

Order Code	Full Product Name	IP-luokka	Order Code	Full Product Name	IP-luokka
96711600	RC132V G4 LED36S/840 PSU W60L60 OC ELB3	IP20/44	97605700	RC132V G4 LED43S/840 WIA W60L60 NOC W3	IP20/44
96732100	RC132V G4 LED36S/840 PSU W60L60 OC W3	IP20/44	97606400	RC132V G4 LED36/840 WIA W60L60 OC TP(a)	IP20/44
96733800	RC132V G4 LED34S/830 PSU W60L60 OC W3	IP20/44	36035500	RC132V G4 LED36S/840 PSU W60L60 NOC	IP20/44
96734500	RC132V G4 LED36S/840 PSD W60L60 OC W5	IP20/44	36036200	RC132V G4 LED34S/830 PSU W60L60 NOC	IP20/44
97587600	RC132V G4 LED34S/830 WIA W60L60 NOC	IP20/44	36037900	RC132V G4 LED43S/840 PSU W60L60 NOC	IP20/44
97588300	RC132V G4 LED36S/840 WIA W60L60 OC	IP20/44	36041600	RC132V G4 LED36S/840 PSU W60L60 OC	IP20/44
97589000	RC132V G4 LED34S/830 WIA W60L60 OC	IP20/44	36042300	RC132V G4 LED34S/830 PSU W60L60 OC	IP20/44
97586900	RC132V G4 LED36S/840 WIA W60L60 NOC	IP20/44	36045400	RC132V G4 LED36S/840 PSD W60L60 OC	IP20/44
97595100	RC132V G4 LED43S/840 WIA W60L60 OC	IP20/44	36046100	RC132V G4 LED34S/830 PSD W60L60 OC	IP20/44
97597500	RC132V G4 LED43S/840 WIA W60L60 NOC	IP20/44	36047800	RC132V G4 LED43S/840 PSD W60L60 OC	IP20/44
97598200	RC132V G4 LED43S/840 WIA W60L60 OC W3	IP20/44	36054600	RC132V G4 LED34_43S/830_840 PSU W60L60 OC	IP20/44
97599900	RC132V G4 LED36S/840 WIA W60L60 NOC W3	IP20/44	97590600	RC132V G4 LED36S/840 WIA W30L120 NOC	IP20/44
97600200	RC132V G4 LED34S/830 WIA W60L60 NOC W3	IP20/44	97591300	RC132V G4 LED36S/840 WIA W30L120 OC	IP20/44
97601900	RC132V G4 LED36S/840 WIA W60L60 OC W3	IP20/44	97603300	RC132V G4 LED36S/840 WIA W30L120 NOC W3	IP20/44
97602600	RC132V G4 LED34S/830 WIA W60L60 OC W3	IP20/44	97604000	RC132V G4 LED36S/840 WIA W30L120 OC W3	IP20/44

## CoreLine Panel

Order Code	Full Product Name	IP-luokka
36040900	RC132V G4 LED36S/840 PSU W30L120 NOC	IP20/44
36044700	RC132V G4 LED36S/840 PSU W30L120 OC	IP20/44
36051500	RC132V G4 LED36S/840 PSD W30L120 OC	IP20/44
36052200	RC132V G4 LED34S/830 PSD W30L120 OC	IP20/44
36056000	RC132V G4LED34_43S/830_840 PSUW30L120 OC	IP20/44
01368100	RC132V G5 36S/840 PSU W60L60 OC ELB3	IP20
01386500	RC132V G5 36S/840 WIA W60L60 OC ELB3	IP20
01387200	RC132V G5 36S/840 WIA W60L60 NOC ELB3	IP20
01394000	RC132V G5 43S/840 WIA W60L60 OC ELB3	IP20
94999700	RC132V G5 34S/830 PSU W60L60 NOC	IP20
95000900	RC132V G5 36S/840 PSU W60L60 NOC	IP20
95004700	RC132V G5 34S/830 PSU W60L60 OC	IP20
95005400	RC132V G5 36S/840 PSU W60L60 OC	IP20
95008500	RC132V G5 34S/830 PSD W60L60 OC	IP20
95009200	RC132V G5 36S/840 PSD W60L60 OC	IP20
95010800	RC132V G5 48S/840 PSD W60L60 OC	IP20
95014600	RC132V G5 36S/940 PSU W60L60 NOC	IP20
95015300	RC132V G5 36S/940 PSU W60L60 OC	IP20
95017700	RC132V G5 36S/940 PSD W60L60 OC	IP20
95018400	RC132V G5 43S/940 PSD W60L60 OC	IP20
95019100	RC132V G5 34S/830 PSU W60L60 NOC W3	IP20
95020700	RC132V G5 36S/840 PSU W60L60 NOC W3	IP20
95022100	RC132V G5 34S/830 PSU W60L60 OC W3	IP20
95023800	RC132V G5 36S/840 PSU W60L60 OC W3	IP20
95026900	RC132V G5 34S/830 PSD W60L60 OC W5	IP20
95027600	RC132V G5 36S/840 PSD W60L60 OC W5	IP20
95030600	RC132V G5 29_34_40S/830 PSU W60L60 OC	IP20
95031300	RC132V G5 31_36_43S/840 PSU W60L60 OC	IP20
95035100	RC132V G5 31_36_43S/840 PSU W60L60 NOC	IP20

Order Code	Full Product Name	IP-luokka
95036800	RC132V G5 29_34_40S/830 PSD W60L60 OC	IP20
95037500	RC132V G5 31_36_43S/840 PSD W60L60 OC	IP20
95040500	RC132V G5 31_36_43S/940 PSD W30L120 OC	IP20
95363500	RC132V G5 34S/830 WIA W60L60 NOC	IP20
95364200	RC132V G5 36S/840 WIA W60L60 NOC	IP20
95366600	RC132V G5 34S/830 WIA W60L60 OC	IP20
95367300	RC132V G5 36S/840 WIA W60L60 OC	IP20
95368000	RC132V G5 43S/840 WIA W60L60 OC	IP20
95372700	RC132V G5 34S/830 WIA W60L60 NOC W3	IP20
95373400	RC132V G5 36S/840 WIA W60L60 NOC W3	IP20
95374100	RC132V G5 43S/840 WIA W60L60 NOC W3	IP20
95375800	RC132V G5 34S/830 WIA W60L60 OC W3	IP20
95376500	RC132V G5 36S/840 WIA W60L60 OC W3	IP20
95377200	RC132V G5 43S/840 WIA W60L60 OC W3	IP20
01369800	RC132V G5 36S/840 PSU W30L120 OC ELB3	IP20
95007800	RC132V G5 36S/840 PSU W30L120 OC	IP20
95012200	RC132V G5 34S/830 PSD W30L120 OC	IP20
95013900	RC132V G5 36S/840 PSD W30L120 OC	IP20
95016000	RC132V G5 36S/940 PSU W30L120 OC	IP20
95028300	RC132V G5 34S/830 PSD W30L120 OC W5	IP20
95029000	RC132V G5 36S/840 PSD W30L120 OC W5	IP20
95371000	RC132V G5 36S/840 WIA W30L120 OC	IP20
95378900	RC132V G5 36S/840 WIA W30L120 OC W3	IP20
95002300	RC133V G5 36S/840 PSU W62L62 NOC	IP20
95006100	RC133V G5 36S/840 PSU W62L62 OC	IP20
95011500	RC133V G5 36S/840 PSD W62L62 OC	IP20
95003000	RC132V G5 36S/840 PSU W30L120 NOC	IP20
95365900	RC132V G5 36S/840 WIA W30L120 NOC	IP20

## Ohjaujärjestelmät ja himmennys

Order Code	Full Product Name	Himmennettävä
96711600	RC132V G4 LED36S/840 PSU W60L60 OC ELB3	Ei
96732100	RC132V G4 LED36S/840 PSU W60L60 OC W3	Ei
96733800	RC132V G4 LED34S/830 PSU W60L60 OC W3	Ei
96734500	RC132V G4 LED36S/840 PSD W60L60 OC W5	Kyllä
97587600	RC132V G4 LED34S/830 WIA W60L60 NOC	Kyllä
97588300	RC132V G4 LED36S/840 WIA W60L60 OC	Kyllä
97589000	RC132V G4 LED34S/830 WIA W60L60 OC	Kyllä
97586900	RC132V G4 LED36S/840 WIA W60L60 NOC	Kyllä
97595100	RC132V G4 LED43S/840 WIA W60L60 OC	Kyllä
97597500	RC132V G4 LED43S/840 WIA W60L60 NOC	Kyllä
97598200	RC132V G4 LED43S/840 WIA W60L60 OC W3	Kyllä
97599900	RC132V G4 LED36S/840 WIA W60L60 NOC W3	Kyllä
97600200	RC132V G4 LED34S/830 WIA W60L60 NOC W3	Kyllä
97601900	RC132V G4 LED36S/840 WIA W60L60 OC W3	Kyllä
97602600	RC132V G4 LED34S/830 WIA W60L60 OC W3	Kyllä
97605700	RC132V G4 LED43S/840 WIA W60L60 NOC W3	Kyllä
97606400	RC132V G4 LED36/840 WIA W60L60 OC TP(a)	Kyllä
36035500	RC132V G4 LED36S/840 PSU W60L60 NOC	Ei
36036200	RC132V G4 LED34S/830 PSU W60L60 NOC	Ei

Order Code	Full Product Name	Himmennettävä
36037900	RC132V G4 LED43S/840 PSU W60L60 NOC	Ei
36041600	RC132V G4 LED36S/840 PSU W60L60 OC	Ei
36042300	RC132V G4 LED34S/830 PSU W60L60 OC	Ei
36045400	RC132V G4 LED36S/840 PSD W60L60 OC	Kyllä
36046100	RC132V G4 LED34S/830 PSD W60L60 OC	Kyllä
36047800	RC132V G4 LED43S/840 PSD W60L60 OC	Kyllä
36054600	RC132V G4LED34_43S/830_840 PSU W60L60 OC	Ei
97590600	RC132V G4 LED36S/840 WIA W30L120 NOC	Kyllä
97591300	RC132V G4 LED36S/840 WIA W30L120 OC	Kyllä
97603300	RC132V G4 LED36S/840 WIA W30L120 NOC W3	Kyllä
97604000	RC132V G4 LED36S/840 WIA W30L120 OC W3	Kyllä
36040900	RC132V G4 LED36S/840 PSU W30L120 NOC	Ei
36044700	RC132V G4 LED36S/840 PSU W30L120 OC	Ei
36051500	RC132V G4 LED36S/840 PSD W30L120 OC	Kyllä
36052200	RC132V G4 LED34S/830 PSD W30L120 OC	Kyllä
36056000	RC132V G4LED34_43S/830_840 PSUW30L120 OC	Ei
01368100	RC132V G5 36S/840 PSU W60L60 OC ELB3	Ei
01386500	RC132V G5 36S/840 WIA W60L60 OC ELB3	Kyllä
01387200	RC132V G5 36S/840 WIA W60L60 NOC ELB3	Kyllä

## CoreLine Panel

Order Code	Full Product Name	Himmennettävä
01394000	RC132V G5 43S/840 WIA W60L60 OC ELB3	Kyllä
94999700	RC132V G5 34S/830 PSU W60L60 NOC	Ei
95000900	RC132V G5 36S/840 PSU W60L60 NOC	Ei
95004700	RC132V G5 34S/830 PSU W60L60 OC	Ei
95005400	RC132V G5 36S/840 PSU W60L60 OC	Ei
95008500	RC132V G5 34S/830 PSD W60L60 OC	Kyllä
95009200	RC132V G5 36S/840 PSD W60L60 OC	Kyllä
95010800	RC132V G5 48S/840 PSD W60L60 OC	Kyllä
95014600	RC132V G5 36S/940 PSU W60L60 NOC	Ei
95015300	RC132V G5 36S/940 PSU W60L60 OC	Ei
95017700	RC132V G5 36S/940 PSD W60L60 OC	Kyllä
95018400	RC132V G5 43S/940 PSD W60L60 OC	Kyllä
95019100	RC132V G5 34S/830 PSU W60L60 NOC W3	Ei
95020700	RC132V G5 36S/840 PSU W60L60 NOC W3	Ei
95022100	RC132V G5 34S/830 PSU W60L60 OC W3	Ei
95023800	RC132V G5 36S/840 PSU W60L60 OC W3	Ei
95026900	RC132V G5 34S/830 PSD W60L60 OC W5	Kyllä
95027600	RC132V G5 36S/840 PSD W60L60 OC W5	Kyllä
95030600	RC132V G5 29_34_40S/830 PSU W60L60 OC	Ei
95031300	RC132V G5 31_36_43S/840 PSU W60L60 OC	Ei
95035100	RC132V G5 31_36_43S/840 PSU W60L60 NOC	Ei
95036800	RC132V G5 29_34_40S/830 PSD W60L60 OC	Kyllä
95037500	RC132V G5 31_36_43S/840 PSD W60L60 OC	Kyllä
95040500	RC132V G5 31_36_43S/940 PSD W30L120 OC	Kyllä
95363500	RC132V G5 34S/830 WIA W60L60 NOC	Kyllä

Order Code	Full Product Name	Himmennettävä
95364200	RC132V G5 36S/840 WIA W60L60 NOC	Kyllä
95366600	RC132V G5 34S/830 WIA W60L60 OC	Kyllä
95367300	RC132V G5 36S/840 WIA W60L60 OC	Kyllä
95368000	RC132V G5 43S/840 WIA W60L60 OC	Kyllä
95372700	RC132V G5 34S/830 WIA W60L60 NOC W3	Kyllä
95373400	RC132V G5 36S/840 WIA W60L60 NOC W3	Kyllä
95374100	RC132V G5 43S/840 WIA W60L60 NOC W3	Kyllä
95375800	RC132V G5 34S/830 WIA W60L60 OC W3	Kyllä
95376500	RC132V G5 36S/840 WIA W60L60 OC W3	Kyllä
95377200	RC132V G5 43S/840 WIA W60L60 OC W3	Kyllä
01369800	RC132V G5 36S/840 PSU W30L120 OC ELB3	Ei
95007800	RC132V G5 36S/840 PSU W30L120 OC	Ei
95012200	RC132V G5 34S/830 PSD W30L120 OC	Kyllä
95013900	RC132V G5 36S/840 PSD W30L120 OC	Kyllä
95016000	RC132V G5 36S/940 PSU W30L120 OC	Ei
95028300	RC132V G5 34S/830 PSD W30L120 OC W5	Kyllä
95029000	RC132V G5 36S/840 PSD W30L120 OC W5	Kyllä
95371000	RC132V G5 36S/840 WIA W30L120 OC	Kyllä
95378900	RC132V G5 36S/840 WIA W30L120 OC W3	Kyllä
95002300	RC133V G5 36S/840 PSU W62L62 NOC	Ei
95006100	RC133V G5 36S/840 PSU W62L62 OC	Ei
95011500	RC133V G5 36S/840 PSD W62L62 OC	Kyllä
95003000	RC132V G5 36S/840 PSU W30L120 NOC	Ei
95365900	RC132V G5 36S/840 WIA W30L120 NOC	Kyllä

## Käyttö ja sähkö tiedot

Order Code	Full Product Name	Ottojännite
96711600	RC132V G4 LED36S/840 PSU W60L60 OC ELB3	220 - 240 V
96732100	RC132V G4 LED36S/840 PSU W60L60 OC W3	220 - 240 V
96733800	RC132V G4 LED34S/830 PSU W60L60 OC W3	220 - 240 V
96734500	RC132V G4 LED36S/840 PSD W60L60 OC W5	220 - 240 V
97587600	RC132V G4 LED34S/830 WIA W60L60 NOC	220 - 240 V
97588300	RC132V G4 LED36S/840 WIA W60L60 OC	220 - 240 V
97589000	RC132V G4 LED34S/830 WIA W60L60 OC	220 - 240 V
97586900	RC132V G4 LED36S/840 WIA W60L60 NOC	220 - 240 V
97595100	RC132V G4 LED43S/840 WIA W60L60 OC	220 - 240 V
97597500	RC132V G4 LED43S/840 WIA W60L60 NOC	220 - 240 V
97598200	RC132V G4 LED43S/840 WIA W60L60 OC W3	220 - 240 V
97599900	RC132V G4 LED36S/840 WIA W60L60 NOC W3	220 - 240 V
97600200	RC132V G4 LED34S/830 WIA W60L60 NOC W3	220 - 240 V
97601900	RC132V G4 LED36S/840 WIA W60L60 OC W3	220 - 240 V
97602600	RC132V G4 LED34S/830 WIA W60L60 OC W3	220 - 240 V
97605700	RC132V G4 LED43S/840 WIA W60L60 NOC W3	220 - 240 V
97606400	RC132V G4 LED36/840 WIA W60L60 OC TP(a)	220 - 240 V
36035500	RC132V G4 LED36S/840 PSU W60L60 NOC	220 - 240 V
36036200	RC132V G4 LED34S/830 PSU W60L60 NOC	220 - 240 V
36037900	RC132V G4 LED43S/840 PSU W60L60 NOC	220 - 240 V
36041600	RC132V G4 LED36S/840 PSU W60L60 OC	220 - 240 V
36042300	RC132V G4 LED34S/830 PSU W60L60 OC	220 - 240 V
36045400	RC132V G4 LED36S/840 PSD W60L60 OC	220 - 240 V

Order Code	Full Product Name	Ottojännite
36046100	RC132V G4 LED34S/830 PSD W60L60 OC	220 - 240 V
36047800	RC132V G4 LED43S/840 PSD W60L60 OC	220 - 240 V
36054600	RC132V G4 LED34_43S/830_840 PSU W60L60 OC	220 - 240 V
97590600	RC132V G4 LED36S/840 WIA W30L120 NOC	220 - 240 V
97591300	RC132V G4 LED36S/840 WIA W30L120 OC	220 - 240 V
97603300	RC132V G4 LED36S/840 WIA W30L120 NOC W3	220 - 240 V
97604000	RC132V G4 LED36S/840 WIA W30L120 OC W3	220 - 240 V
36040900	RC132V G4 LED36S/840 PSU W30L120 NOC	220 - 240 V
36044700	RC132V G4 LED36S/840 PSU W30L120 OC	220 - 240 V
36051500	RC132V G4 LED36S/840 PSD W30L120 OC	220 - 240 V
36052200	RC132V G4 LED34S/830 PSD W30L120 OC	220 - 240 V
36056000	RC132V G4 LED34_43S/830_840 PSUW30L120 OC	220 - 240 V
01368100	RC132V G5 36S/840 PSU W60L60 OC ELB3	220-240 V
01386500	RC132V G5 36S/840 WIA W60L60 OC ELB3	220-240 V
01387200	RC132V G5 36S/840 WIA W60L60 NOC ELB3	220-240 V
01394000	RC132V G5 43S/840 WIA W60L60 OC ELB3	220-240 V
94999700	RC132V G5 34S/830 PSU W60L60 NOC	220-240 V
95000900	RC132V G5 36S/840 PSU W60L60 NOC	220-240 V
95004700	RC132V G5 34S/830 PSU W60L60 OC	220-240 V
95005400	RC132V G5 36S/840 PSU W60L60 OC	220-240 V
95008500	RC132V G5 34S/830 PSD W60L60 OC	220-240 V
95009200	RC132V G5 36S/840 PSD W60L60 OC	220-240 V
95010800	RC132V G5 48S/840 PSD W60L60 OC	220-240 V

## CoreLine Panel

Order Code	Full Product Name	Ottojännite
95014600	RC132V G5 36S/940 PSU W60L60 NOC	220-240 V
95015300	RC132V G5 36S/940 PSU W60L60 OC	220-240 V
95017700	RC132V G5 36S/940 PSD W60L60 OC	220-240 V
95018400	RC132V G5 43S/940 PSD W60L60 OC	220-240 V
95019100	RC132V G5 34S/830 PSU W60L60 NOC W3	220-240 V
95020700	RC132V G5 36S/840 PSU W60L60 NOC W3	220-240 V
95022100	RC132V G5 34S/830 PSU W60L60 OC W3	220-240 V
95023800	RC132V G5 36S/840 PSU W60L60 OC W3	220-240 V
95026900	RC132V G5 34S/830 PSD W60L60 OC W5	220-240 V
95027600	RC132V G5 36S/840 PSD W60L60 OC W5	220-240 V
95030600	RC132V G5 29_34_40S/830 PSU W60L60 OC	220-240 V
95031300	RC132V G5 31_36_43S/840 PSU W60L60 OC	220-240 V
95035100	RC132V G5 31_36_43S/840 PSU W60L60 NOC	220-240 V
95036800	RC132V G5 29_34_40S/830 PSD W60L60 OC	220-240 V
95037500	RC132V G5 31_36_43S/840 PSD W60L60 OC	220-240 V
95040500	RC132V G5 31_36_43S/940 PSD W30L120 OC	220-240 V
95363500	RC132V G5 34S/830 WIA W60L60 NOC	220-240 V
95364200	RC132V G5 36S/840 WIA W60L60 NOC	220-240 V
95366600	RC132V G5 34S/830 WIA W60L60 OC	220-240 V
95367300	RC132V G5 36S/840 WIA W60L60 OC	220-240 V
95368000	RC132V G5 43S/840 WIA W60L60 OC	220-240 V

Order Code	Full Product Name	Ottojännite
95372700	RC132V G5 34S/830 WIA W60L60 NOC W3	220-240 V
95373400	RC132V G5 36S/840 WIA W60L60 NOC W3	220-240 V
95374100	RC132V G5 43S/840 WIA W60L60 NOC W3	220-240 V
95375800	RC132V G5 34S/830 WIA W60L60 OC W3	220-240 V
95376500	RC132V G5 36S/840 WIA W60L60 OC W3	220-240 V
95377200	RC132V G5 43S/840 WIA W60L60 OC W3	220-240 V
01369800	RC132V G5 36S/840 PSU W30L120 OC ELB3	220-240 V
95007800	RC132V G5 36S/840 PSU W30L120 OC	220-240 V
95012200	RC132V G5 34S/830 PSD W30L120 OC	220-240 V
95013900	RC132V G5 36S/840 PSD W30L120 OC	220-240 V
95016000	RC132V G5 36S/940 PSU W30L120 OC	220-240 V
95028300	RC132V G5 34S/830 PSD W30L120 OC W5	220-240 V
95029000	RC132V G5 36S/840 PSD W30L120 OC W5	220-240 V
95371000	RC132V G5 36S/840 WIA W30L120 OC	220-240 V
95378900	RC132V G5 36S/840 WIA W30L120 OC W3	220-240 V
95002300	RC133V G5 36S/840 PSU W62L62 NOC	220-240 V
95006100	RC133V G5 36S/840 PSU W62L62 OC	220-240 V
95011500	RC133V G5 36S/840 PSD W62L62 OC	220-240 V
95003000	RC132V G5 36S/840 PSU W30L120 NOC	220-240 V
95365900	RC132V G5 36S/840 WIA W30L120 NOC	220-240 V

### Yleistä tietoa

Order Code	Full Product Name	Tulenarkuusmerkintä	Hehkulankatesti	Optiikan tyyppi	Tuoteperheen koodi	Order Code	Full Product Name	Tulenarkuusmerkintä	Hehkulankatesti	Optiikan tyyppi	Tuoteperheen koodi
96711600	RC132V G4 LED36S/840 PSU W60L60 OC ELB3	-	Lämpötila 850 °C, kesto 30 s	90	RC132V	97586900	RC132V G4 LED36S/840 WIA W60L60 OC	-	Lämpötila 650 °C, kesto 30 s	90	RC132V
96732100	RC132V G4 LED36S/840 PSU W60L60 OC W3	-	Lämpötila 650 °C, kesto 30 s	90	RC132V	97595100	RC132V G4 LED43S/840 WIA W60L60 OC	-	Lämpötila 650 °C, kesto 30 s	90	RC132V
96733800	RC132V G4 LED34S/830 PSU W60L60 OC W3	-	Lämpötila 650 °C, kesto 30 s	90	RC132V	97597500	RC132V G4 LED43S/840 WIA W60L60 OC W3	-	Lämpötila 650 °C, kesto 30 s	90	RC132V
96734500	RC132V G4 LED36S/840 PSD W60L60 OC W5	-	Lämpötila 650 °C, kesto 30 s	90	RC132V	97598200	RC132V G4 LED43S/840 WIA W60L60 OC W3	-	Lämpötila 650 °C, kesto 30 s	90	RC132V
97587600	RC132V G4 LED34S/830 WIA W60L60 NOC	-	Lämpötila 650 °C, kesto 30 s	90	RC132V	97599900	RC132V G4 LED36S/840 WIA W60L60 NOC W3	-	Lämpötila 650 °C, kesto 30 s	90	RC132V
97588300	RC132V G4 LED36S/840 WIA W60L60 OC	-	Lämpötila 650 °C, kesto 30 s	90	RC132V	97600200	RC132V G4 LED34S/830 WIA W60L60 NOC W3	-	Lämpötila 650 °C, kesto 30 s	90	RC132V
97589000	RC132V G4 LED34S/830	-	Lämpötila 650 °C, kesto 30 s	90	RC132V						

# CoreLine Panel

Order Code	Full Product Name	Tulenarkausmerkintä	Hehkulankatesti	Optiikan tyyppi	Tuoteperheen koodi	Order Code	Full Product Name	Tulenarkausmerkintä	Hehkulankatesti	Optiikan tyyppi	Tuoteperheen koodi
97601900	RC132V G4 LED36S/840 WIA W60L60 OC W3	-	Lämpötila 650 °C, kesto 30 s	90	RC132V		830_840 PSU W60L60 OC				
						97590600	RC132V G4 LED36S/840	-	Lämpötila 650 °C, kesto 30 s	90	RC132V
97602600	RC132V G4 LED34S/830 WIA W60L60 OC W3	-	Lämpötila 650 °C, kesto 30 s	90	RC132V		WIA W30L120 NOC				
						97591300	RC132V G4 LED36S/840	-	Lämpötila 650 °C, kesto 30 s	90	RC132V
97605700	RC132V G4 LED43S/840 WIA W60L60 NOC W3	-	Lämpötila 650 °C, kesto 30 s	90	RC132V		WIA W30L120 OC				
						97603300	RC132V G4 LED36S/840	-	Lämpötila 650 °C, kesto 30 s	90	RC132V
97606400	RC132V G4 LED36/840 WIA W60L60 OC TP(a)	-	Lämpötila 650 °C, kesto 30 s	90	RC132V		WIA W30L120 NOC W3				
						97604000	RC132V G4 LED36S/840	-	Lämpötila 650 °C, kesto 30 s	90	RC132V
36035500	RC132V G4 LED36S/840 PSU W60L60 NOC	-	Lämpötila 650 °C, kesto 30 s	120	-		WIA W30L120 OC W3				
						36040900	RC132V G4 LED36S/840	-	Lämpötila 650 °C, kesto 30 s	120	-
36036200	RC132V G4 LED34S/830 PSU W60L60 NOC	-	Lämpötila 650 °C, kesto 30 s	120	-		PSU W30L120 NOC				
						36044700	RC132V G4 LED36S/840	-	Lämpötila 650 °C, kesto 30 s	90	-
36037900	RC132V G4 LED43S/840 PSU W60L60 NOC	-	Lämpötila 650 °C, kesto 30 s	120	-		PSU W30L120 OC				
						36051500	RC132V G4 LED36S/840	-	Lämpötila 650 °C, kesto 30 s	90	-
36041600	RC132V G4 LED36S/840 PSU W60L60 OC	-	Lämpötila 650 °C, kesto 30 s	90	-		PSD W30L120 OC				
						36052200	RC132V G4 LED34S/830	-	Lämpötila 650 °C, kesto 30 s	90	-
36042300	RC132V G4 LED34S/830 PSU W60L60 OC	-	Lämpötila 650 °C, kesto 30 s	90	-		PSD W30L120 OC				
						36056000	RC132V G4LED34_43S/ 830_840	-	Lämpötila 650 °C, kesto 30 s	90	-
36045400	RC132V G4 LED36S/840 PSD W60L60 OC	-	Lämpötila 650 °C, kesto 30 s	90	-		PSUW30L120 OC				
						01368100	RC132V G5 36S/840 PSU W60L60 OC ELB3	Soveltuu asennettavaksi normaalisti syttyville pinnoille	Lämpötila 650 °C, kesto 30 s	90	RC132V
36046100	RC132V G4 LED34S/830 PSD W60L60 OC	-	Lämpötila 650 °C, kesto 30 s	90	-						
						01386500	RC132V G5 36S/840 WIA W60L60 OC ELB3	Soveltuu asennettavaksi normaalisti syttyville pinnoille	Lämpötila 650 °C, kesto 30 s	90	RC132V
36047800	RC132V G4 LED43S/840 PSD W60L60 OC	-	Lämpötila 650 °C, kesto 30 s	90	-						
						01387200	RC132V G5 36S/840 WIA W60L60 NOC ELB3	Soveltuu asennettavaksi normaalisti syttyville pinnoille	Lämpötila 650 °C, kesto 30 s	120	RC132V
36054600	RC132V G4LED34_43S/	-	Lämpötila 650 °C, kesto 30 s	90	-						

# CoreLine Panel

Order Code	Full Product Name	Tulenarkuusmerkintä	Hehkulankatesti	Optiikan tyyppi	Tuoteperheen koodi	Order Code	Full Product Name	Tulenarkuusmerkintä	Hehkulankatesti	Optiikan tyyppi	Tuoteperheen koodi
01394000	RC132V G5 43S/840 WIA W60L60 OC ELB3	Soveltuu asennettavaksi normaalisti syttyville pinnoille	Lämpötila 650 °C, kesto 30 s	90	RC132V	95020700	W60L60 NOC W3	normaalisti syttyville pinnoille		120	-
94999700	RC132V G5 34S/830 PSU W60L60 NOC	Soveltuu asennettavaksi normaalisti syttyville pinnoille	Lämpötila 650 °C, kesto 30 s	120	-	95022100	RC132V G5 34S/830 PSU W60L60 OC W3	Soveltuu asennettavaksi normaalisti syttyville pinnoille	Lämpötila 650 °C, kesto 30 s	90	-
95000900	RC132V G5 36S/840 PSU W60L60 NOC	Soveltuu asennettavaksi normaalisti syttyville pinnoille	Lämpötila 650 °C, kesto 30 s	120	-	95023800	RC132V G5 36S/840 PSU W60L60 OC W3	Soveltuu asennettavaksi normaalisti syttyville pinnoille	Lämpötila 650 °C, kesto 30 s	90	-
95004700	RC132V G5 34S/830 PSU W60L60 OC	Soveltuu asennettavaksi normaalisti syttyville pinnoille	Lämpötila 650 °C, kesto 30 s	90	-	95026900	RC132V G5 34S/830 PSD W60L60 OC W3	Soveltuu asennettavaksi normaalisti syttyville pinnoille	Lämpötila 650 °C, kesto 30 s	90	-
95005400	RC132V G5 36S/840 PSU W60L60 OC	Soveltuu asennettavaksi normaalisti syttyville pinnoille	Lämpötila 650 °C, kesto 30 s	90	-	95027600	RC132V G5 36S/840 PSD W60L60 OC W5	Soveltuu asennettavaksi normaalisti syttyville pinnoille	Lämpötila 650 °C, kesto 30 s	90	-
95008500	RC132V G5 34S/830 PSD W60L60 OC	Soveltuu asennettavaksi normaalisti syttyville pinnoille	Lämpötila 650 °C, kesto 30 s	90	-	95030600	RC132V G5 29_34_40S/83 0 PSU W60L60 OC	Soveltuu asennettavaksi normaalisti syttyville pinnoille	Lämpötila 650 °C, kesto 30 s	90	-
95009200	RC132V G5 36S/840 PSD W60L60 OC	Soveltuu asennettavaksi normaalisti syttyville pinnoille	Lämpötila 650 °C, kesto 30 s	90	-	95031300	RC132V G5 31_36_43S/84 0 PSU W60L60 OC	Soveltuu asennettavaksi normaalisti syttyville pinnoille	Lämpötila 650 °C, kesto 30 s	90	-
95010800	RC132V G5 48S/840 PSD W60L60 OC	Soveltuu asennettavaksi normaalisti syttyville pinnoille	Lämpötila 650 °C, kesto 30 s	90	-	95035100	RC132V G5 31_36_43S/84 0 PSU W60L60 NOC	Soveltuu asennettavaksi normaalisti syttyville pinnoille	Lämpötila 650 °C, kesto 30 s	120	-
95014600	RC132V G5 36S/940 PSU W60L60 NOC	Soveltuu asennettavaksi normaalisti syttyville pinnoille	Lämpötila 650 °C, kesto 30 s	120	-	95036800	RC132V G5 29_34_40S/83 0 PSD W60L60 OC	Soveltuu asennettavaksi normaalisti syttyville pinnoille	Lämpötila 650 °C, kesto 30 s	90	-
95015300	RC132V G5 36S/940 PSU W60L60 OC	Soveltuu asennettavaksi normaalisti syttyville pinnoille	Lämpötila 650 °C, kesto 30 s	90	-	95037500	RC132V G5 31_36_43S/84 0 PSD W60L60 OC	Soveltuu asennettavaksi normaalisti syttyville pinnoille	Lämpötila 650 °C, kesto 30 s	90	-
95017700	RC132V G5 36S/940 PSD W60L60 OC	Soveltuu asennettavaksi normaalisti syttyville pinnoille	Lämpötila 650 °C, kesto 30 s	90	-	95040500	RC132V G5 31_36_43S/94 0 PSD W30L120 OC	Soveltuu asennettavaksi normaalisti syttyville pinnoille	Lämpötila 650 °C, kesto 30 s	90	-
95018400	RC132V G5 43S/940 PSD W60L60 OC	Soveltuu asennettavaksi normaalisti syttyville pinnoille	Lämpötila 650 °C, kesto 30 s	90	-	95363500	RC132V G5 34S/830 WIA W60L60 NOC	Soveltuu asennettavaksi normaalisti syttyville pinnoille	Lämpötila 650 °C, kesto 30 s	120	-
95019100	RC132V G5 34S/830 PSU	Soveltuu asennettavaksi	Lämpötila 650 °C, kesto 30 s	120	-						

## CoreLine Panel

Order Code	Full Product Name	Tulenarkuusmerkintä	Hehkulankatesti	Optiikan tyyppi	Tuoteperheen koodi	Order Code	Full Product Name	Tulenarkuusmerkintä	Hehkulankatesti	Optiikan tyyppi	Tuoteperheen koodi
95364200	RC132V G5 36S/840 WIA W60L60 NOC	Soveltuu asennettavaksi normaalisti syttyville pinnoille	Lämpötila 650 °C, kesto 30 s	120	-	95012200	RC132V G5 34S/830 PSD W30L120 OC	Soveltuu asennettavaksi normaalisti syttyville pinnoille	Lämpötila 650 °C, kesto 30 s	90	-
95366600	RC132V G5 34S/830 WIA W60L60 OC	Soveltuu asennettavaksi normaalisti syttyville pinnoille	Lämpötila 650 °C, kesto 30 s	90	-	95013900	RC132V G5 36S/840 PSD W30L120 OC	Soveltuu asennettavaksi normaalisti syttyville pinnoille	Lämpötila 650 °C, kesto 30 s	90	-
95367300	RC132V G5 36S/840 WIA W60L60 OC	Soveltuu asennettavaksi normaalisti syttyville pinnoille	Lämpötila 650 °C, kesto 30 s	90	-	95016000	RC132V G5 36S/940 PSU W30L120 OC	Soveltuu asennettavaksi normaalisti syttyville pinnoille	Lämpötila 650 °C, kesto 30 s	90	-
95368000	RC132V G5 43S/840 WIA W60L60 OC	Soveltuu asennettavaksi normaalisti syttyville pinnoille	Lämpötila 650 °C, kesto 30 s	90	-	95028300	RC132V G5 34S/830 PSD W30L120 OC W5	Soveltuu asennettavaksi normaalisti syttyville pinnoille	Lämpötila 650 °C, kesto 30 s	90	-
95372700	RC132V G5 34S/830 WIA W60L60 NOC W3	Soveltuu asennettavaksi normaalisti syttyville pinnoille	Lämpötila 650 °C, kesto 30 s	120	-	95029000	RC132V G5 36S/840 PSD W30L120 OC W5	Soveltuu asennettavaksi normaalisti syttyville pinnoille	Lämpötila 650 °C, kesto 30 s	90	-
95373400	RC132V G5 36S/840 WIA W60L60 NOC W3	Soveltuu asennettavaksi normaalisti syttyville pinnoille	Lämpötila 650 °C, kesto 30 s	120	-	95371000	RC132V G5 36S/840 WIA W30L120 OC	Soveltuu asennettavaksi normaalisti syttyville pinnoille	Lämpötila 650 °C, kesto 30 s	90	-
95374100	RC132V G5 43S/840 WIA W60L60 NOC W3	Soveltuu asennettavaksi normaalisti syttyville pinnoille	Lämpötila 650 °C, kesto 30 s	120	-	95378900	RC132V G5 36S/840 WIA W30L120 OC W3	Soveltuu asennettavaksi normaalisti syttyville pinnoille	Lämpötila 650 °C, kesto 30 s	90	-
95375800	RC132V G5 34S/830 WIA W60L60 OC W3	Soveltuu asennettavaksi normaalisti syttyville pinnoille	Lämpötila 650 °C, kesto 30 s	90	-	95002300	RC133V G5 36S/840 PSU W62L62 NOC	Soveltuu asennettavaksi normaalisti syttyville pinnoille	Lämpötila 650 °C, kesto 30 s	120	-
95376500	RC132V G5 36S/840 WIA W60L60 OC W3	Soveltuu asennettavaksi normaalisti syttyville pinnoille	Lämpötila 650 °C, kesto 30 s	90	-	95006100	RC133V G5 36S/840 PSU W62L62 OC	Soveltuu asennettavaksi normaalisti syttyville pinnoille	Lämpötila 650 °C, kesto 30 s	90	-
95377200	RC132V G5 43S/840 WIA W60L60 OC W3	Soveltuu asennettavaksi normaalisti syttyville pinnoille	Lämpötila 650 °C, kesto 30 s	90	-	95011500	RC133V G5 36S/840 PSD W62L62 OC	Soveltuu asennettavaksi normaalisti syttyville pinnoille	Lämpötila 650 °C, kesto 30 s	90	-
01369800	RC132V G5 36S/840 PSU W30L120 OC ELB3	Soveltuu asennettavaksi normaalisti syttyville pinnoille	Lämpötila 650 °C, kesto 30 s	90	RC132V	95003000	RC132V G5 36S/840 PSU W30L120 NOC	Soveltuu asennettavaksi normaalisti syttyville pinnoille	Lämpötila 650 °C, kesto 30 s	120	-
95007800	RC132V G5 36S/840 PSU W30L120 OC	Soveltuu asennettavaksi normaalisti syttyville pinnoille	Lämpötila 650 °C, kesto 30 s	90	-	95365900	RC132V G5 36S/840 WIA W30L120 NOC	Soveltuu asennettavaksi normaalisti syttyville pinnoille	Lämpötila 650 °C, kesto 30 s	120	-

### Suorituskyky alussa (IEC-yhteensopiva) (1/2)

# CoreLine Panel

Order Code	Full Product Name	Alukromaattisuus	Alun vast. värilämpötila	Alun värintoistoindeksi	LED-valaisim		Full Product Name	Alukromaattisuus	Alun vast. värilämpötila	Alun värintoistoindeksi	LED-valaisimen tehokkuus
					tehokkuus alussa	Order Code					
96711600	RC132V G4 LED36S/840 PSU W60L60 OC ELB3	(0,38, 0,38) SDCM <3	4000 K	>80	123 lm/W	97600200	RC132V G4 LED34S/830 WIA W60L60 NOC W3	(0,38, 0,38) SDCM <3	3000 K	>80	117 lm/W
96732100	RC132V G4 LED36S/840 PSU W60L60 OC W3	(0,38, 0,38) SDCM <3	4000 K	>80	123 lm/W	97601900	RC132V G4 LED36S/840 WIA W60L60 OC W3	(0,38, 0,38) SDCM <3	4000 K	>80	123 lm/W
96733800	RC132V G4 LED34S/830 PSU W60L60 OC W3	(0,38, 0,38) SDCM <3	3000 K	>80	117 lm/W	97602600	RC132V G4 LED34S/830 WIA W60L60 OC W3	(0,38, 0,38) SDCM <3	3000 K	>80	117 lm/W
96734500	RC132V G4 LED36S/840 PSD W60L60 OC W5	(0,38, 0,38) SDCM <3	4000 K	>80	123 lm/W	97605700	RC132V G4 LED43S/840 WIA W60L60 NOC W3	(0,38, 0,38) SDCM <3	4000 K	>80	125 lm/W
97587600	RC132V G4 LED34S/830 WIA W60L60 NOC	(0,38, 0,38) SDCM <3	3000 K	>80	117 lm/W	97606400	RC132V G4 LED36/840 WIA W60L60 OC TP(a)	(0,38, 0,38) SDCM <3	4000 K	>80	123 lm/W
97588300	RC132V G4 LED36S/840 WIA W60L60 OC	(0,38, 0,38) SDCM <3	4000 K	>80	123 lm/W	36035500	RC132V G4 LED36S/840 PSU W60L60 NOC	(0,38, 0,38) SDCM ≤3	4000 K	>80	123 lm/W
97589000	RC132V G4 LED34S/830 WIA W60L60 OC	(0,38, 0,38) SDCM <3	3000 K	>80	117 lm/W	36036200	RC132V G4 LED34S/830 PSU W60L60 NOC	(0,44, 0,41) SDCM ≤3	3000 K	>80	117 lm/W
97586900	RC132V G4 LED36S/840 WIA W60L60 NOC	(0,38, 0,38) SDCM <3	4000 K	>80	123 lm/W	36037900	RC132V G4 LED43S/840 PSU W60L60 NOC	(0,39, 0,39) SDCM ≤3	4000 K	>80	125 lm/W
97595100	RC132V G4 LED43S/840 WIA W60L60 OC	(0,38, 0,38) SDCM <3	4000 K	>80	125 lm/W	36041600	RC132V G4 LED36S/840 PSU W60L60 OC	(0,38, 0,38) SDCM ≤3	4000 K	>80	123 lm/W
97597500	RC132V G4 LED43S/840 WIA W60L60 NOC	(0,38, 0,38) SDCM <3	4000 K	>80	125 lm/W	36042300	RC132V G4 LED34S/830 PSU W60L60 OC	(0,44, 0,41) SDCM ≤3	3000 K	>80	117 lm/W
97598200	RC132V G4 LED43S/840 WIA W60L60 OC W3	(0,38, 0,38) SDCM <3	4000 K	>80	125 lm/W	36045400	RC132V G4 LED36S/840 PSD W60L60 OC	(0,38, 0,38) SDCM ≤3	4000 K	>80	123 lm/W
97599900	RC132V G4 LED36S/840 WIA W60L60 NOC W3	(0,38, 0,38) SDCM <3	4000 K	>80	123 lm/W	36046100	RC132V G4 LED34S/830 PSD W60L60 OC	(0,44, 0,41) SDCM ≤3	3000 K	>80	117 lm/W

# CoreLine Panel

Order Code	Full Product Name	Alkukromaattisuus	Alun vast. värilämpötila	Alun värintoistoindeksi	LED-valaisim		Full Product Name	Alkukromaattisuus	Alun vast. värilämpötila	Alun värintoistoindeksi	LED-valaisimen tehokkuus
					tehokkuus alussa	Order Code					
36047800	RC132V G4 LED43S/840 PSD W60L60 OC	(0.39, 0.39) SDCM ≤3	4000 K	>80	125 lm/W	01386500	RC132V G5 36S/840 WIA W60L60 OC ELB3	(0.38, 0.38) SDCM≤3	4000 K	>80	107 lm/W
36054600	RC132V G4LED34_43S/ 830_840 PSU W60L60 OC	(0.39, 0.39) SDCM ≤3	3000, 4000 K	>80	125 lm/W	01387200	RC132V G5 36S/840 WIA W60L60 NOC ELB3	(0.38, 0.38) SDCM≤3	4000 K	>80	107 lm/W
97590600	RC132V G4 LED36S/840 WIA W30L120 NOC	(0.38, 0.38) SDCM <3	4000 K	>80	123 lm/W	01394000	RC132V G5 43S/840 WIA W60L60 OC ELB3	(0.38, 0.38) SDCM≤3	4000 K	>80	128 lm/W
97591300	RC132V G4 LED36S/840 WIA W30L120 OC	(0.38, 0.38) SDCM <3	4000 K	>80	123 lm/W	94999700	RC132V G5 34S/830 PSU W60L60 NOC	(0.43, 0.40) SDCM≤3	3000 K	>80	120 lm/W
97603300	RC132V G4 LED36S/840 WIA W30L120 NOC W3	(0.38, 0.38) SDCM <3	4000 K	>80	123 lm/W	95000900	RC132V G5 36S/840 PSU W60L60 NOC	(0.38, 0.38) SDCM≤3	4000 K	>80	125 lm/W
97604000	RC132V G4 LED36S/840 WIA W30L120 OC W3	(0.38, 0.38) SDCM <3	4000 K	>80	123 lm/W	95004700	RC132V G5 34S/830 PSU W60L60 OC	(0.43, 0.40) SDCM≤3	3000 K	>80	120 lm/W
36040900	RC132V G4 LED36S/840 PSU W30L120 NOC	(0.38, 0.38) SDCM ≤3	4000 K	>80	123 lm/W	95008500	RC132V G5 34S/830 PSD W60L60 OC	(0.43, 0.40) SDCM≤3	3000 K	>80	120 lm/W
36044700	RC132V G4 LED36S/840 PSU W30L120 OC	(0.38, 0.38) SDCM ≤3	4000 K	>80	123 lm/W	95009200	RC132V G5 36S/840 PSD W60L60 OC	(0.38, 0.38) SDCM≤3	4000 K	>80	125 lm/W
36051500	RC132V G4 LED36S/840 PSD W30L120 OC	(0.38, 0.38) SDCM ≤3	4000 K	>80	123 lm/W	95010800	RC132V G5 48S/840 PSD W60L60 OC	(0.38, 0.38) SDCM≤3	4000 K	>80	120 lm/W
36052200	RC132V G4 LED34S/830 PSD W30L120 OC	(0.44, 0.41) SDCM ≤3	3000 K	>80	117 lm/W	95014600	RC132V G5 36S/940 PSU W60L60 NOC	(0.38, 0.38) SDCM≤3	4000 K	>90	104 lm/W
36056000	RC132V G4LED34_43S/ 830_840 PSUW30L120 OC	(0.39, 0.39) SDCM ≤3	3000, 4000 K	>80	125 lm/W	95017700	RC132V G5 36S/940 PSD W60L60 OC	(0.38, 0.38) SDCM≤3	4000 K	>90	104 lm/W
01368100	RC132V G5 36S/840 PSU W60L60 OC ELB3	(0.38, 0.38) SDCM≤3	4000 K	>80	106 lm/W	95018400	RC132V G5 43S/940 PSD W60L60 OC	(0.38, 0.38) SDCM≤3	4000 K	>90	107 lm/W
					95019100	RC132V G5 34S/830 PSU W60L60 NOC W3	(0.43, 0.40) SDCM≤3	3000 K	>80	120 lm/W	

# CoreLine Panel

Order Code	Full Product Name	Alkukromaattisuus	Alun vast. värilämpötila	Alun värintoistoindeksi	LED-valaisim		Full Product Name	Alkukromaattisuus	Alun vast. värilämpötila	Alun värintoistoindeksi	LED-valaisimen tehokkuus
					tehokkuus alussa	Order Code					
95020700	RC132V G5	(0.38, 0.38)	4000 K	>80	125 lm/W	95364200	RC132V G5	(0.38, 0.38)	4000 K	>80	125 lm/W
	36S/840 PSU W60L60 NOC W3	SDCM≤3					36S/840 WIA W60L60 NOC	SDCM≤3			
95022100	RC132V G5	(0.43, 0.40)	3000 K	>80	120 lm/W	95366600	RC132V G5	(0.43, 0.40)	3000 K	>80	120 lm/W
	34S/830 PSU W60L60 OC W3	SDCM≤3					34S/830 WIA W60L60 OC	SDCM≤3			
95023800	RC132V G5	(0.38, 0.38)	4000 K	>80	125 lm/W	95367300	RC132V G5	(0.38, 0.38)	4000 K	>80	125 lm/W
	36S/840 PSU W60L60 OC W3	SDCM≤3					36S/840 WIA W60L60 OC	SDCM≤3			
95026900	RC132V G5	(0.43, 0.40)	3000 K	>80	120 lm/W	95372700	RC132V G5	(0.43, 0.40)	3000 K	>80	120 lm/W
	34S/830 PSD W60L60 OC W5	SDCM≤3					34S/830 WIA W60L60 NOC W3	SDCM≤3			
95027600	RC132V G5	(0.38, 0.38)	4000 K	>80	125 lm/W	95373400	RC132V G5	(0.38, 0.38)	4000 K	>80	125 lm/W
	36S/840 PSD W60L60 OC W5	SDCM≤3					36S/840 WIA W60L60 NOC W3	SDCM≤3			
95030600	RC132V G5	(0.43, 0.40)	3000 K	>80	120 lm/W	95374100	RC132V G5	(0.38, 0.38)	4000 K	>80	125 lm/W
	29_34_40S/83 0 PSU W60L60 OC	SDCM≤3					43S/840 WIA W60L60 NOC W3	SDCM≤3			
95031300	RC132V G5	(0.38, 0.38)	4000 K	>80	125 lm/W	95375800	RC132V G5	(0.43, 0.40)	3000 K	>80	120 lm/W
	31_36_43S/84 0 PSU W60L60 OC	SDCM≤3					34S/830 WIA W60L60 OC W3	SDCM≤3			
95035100	RC132V G5	(0.38, 0.38)	4000 K	>80	125 lm/W	95376500	RC132V G5	(0.38, 0.38)	4000 K	>80	125 lm/W
	31_36_43S/84 0 PSU W60L60 NOC	SDCM≤3					36S/840 WIA W60L60 OC W3	SDCM≤3			
95036800	RC132V G5	(0.43, 0.40)	3000 K	>80	120 lm/W	95377200	RC132V G5	(0.38, 0.38)	4000 K	>80	125 lm/W
	29_34_40S/83 0 PSD W60L60 OC	SDCM≤3					43S/840 WIA W60L60 OC W3	SDCM≤3			
95037500	RC132V G5	(0.38, 0.38)	4000 K	>80	125 lm/W	01369800	RC132V G5	(0.38, 0.38)	4000 K	>80	106 lm/W
	31_36_43S/84 0 PSD W60L60 OC	SDCM≤3					36S/840 PSU W30L120 OC ELB3	SDCM≤3			
95040500	RC132V G5	(0.38, 0.38)	4000 K	>90	107 lm/W	95007800	RC132V G5	(0.38, 0.38)	4000 K	>80	125 lm/W
	31_36_43S/94 0 PSD W30L120 OC	SDCM≤3					36S/840 PSU W30L120 OC	SDCM≤3			
95363500	RC132V G5	(0.43, 0.40)	3000 K	>80	120 lm/W	95012200	RC132V G5	(0.43, 0.40)	3000 K	>80	120 lm/W
	34S/830 WIA W60L60 NOC	SDCM≤3					34S/830 PSD W30L120 OC	SDCM≤3			
						95013900	RC132V G5	(0.38, 0.38)	4000 K	>80	125 lm/W
							36S/840 PSD W30L120 OC	SDCM≤3			

## CoreLine Panel

Order Code	Full Product Name	Alkukromaattisuus	Alun vast. värilämpötila	Alun värintoistoindeksi	LED-valaisim tehokkuus alussa	Order Code	Full Product Name	Alkukromaattisuus	Alun vast. värilämpötila	Alun värintoistoindeksi	LED-valaisimen tehokkuus alussa
95016000	RC132V G5 36S/940 PSU W30L120 OC	(0.38, 0.38)	4000 K	>90	104 lm/W	95002300	RC133V G5 36S/840 PSU W62L62 NOC	(0.38, 0.38)	4000 K	>80	125 lm/W
95028300	RC132V G5 34S/830 PSD W30L120 OC W5	(0.43, 0.40)	3000 K	>80	120 lm/W	95006100	RC133V G5 36S/840 PSU W62L62 OC	(0.38, 0.38)	4000 K	>80	125 lm/W
95029000	RC132V G5 36S/840 PSD W30L120 OC W5	(0.38, 0.38)	4000 K	>80	125 lm/W	95011500	RC133V G5 36S/840 PSD W62L62 OC	(0.38, 0.38)	4000 K	>80	125 lm/W
95371000	RC132V G5 36S/840 WIA W30L120 OC	(0.38, 0.38)	4000 K	>80	125 lm/W	95003000	RC132V G5 36S/840 PSU W30L120 NOC	(0.38, 0.38)	4000 K	>80	125 lm/W
95378900	RC132V G5 36S/840 WIA	(0.38, 0.38)	4000 K	≥80	125 lm/W	95365900	RC132V G5 36S/840 WIA W30L120 NOC	(0.38, 0.38)	4000 K	>80	125 lm/W

### Suorituskyky alussa (IEC-yhteensopiva) (2/2)

Order Code	Full Product Name	Valovirta alussa	Ottoteho alussa	Order Code	Full Product Name	Valovirta alussa	Ottoteho alussa
96711600	RC132V G4 LED36S/840 PSU W60L60 OC ELB3	3600 lm	33 W	97601900	RC132V G4 LED36S/840 WIA W60L60 OC W3	3600 lm	29 W
96732100	RC132V G4 LED36S/840 PSU W60L60 OC W3	3600 lm	29 W	97602600	RC132V G4 LED34S/830 WIA W60L60 OC W3	3400 lm	29 W
96733800	RC132V G4 LED34S/830 PSU W60L60 OC W3	3400 lm	29 W	97605700	RC132V G4 LED43S/840 WIA W60L60 NOC W3	4300 lm	34.5 W
96734500	RC132V G4 LED36S/840 PSD W60L60 OC W5	3600 lm	29 W	97606400	RC132V G4 LED36/840 WIA W60L60 OC TP(a)	3600 lm	29 W
97587600	RC132V G4 LED34S/830 WIA W60L60 NOC	3400 lm	29 W	36035500	RC132V G4 LED36S/840 PSU W60L60 NOC	3600 lm	29 W
97588300	RC132V G4 LED36S/840 WIA W60L60 OC	3600 lm	29 W	36036200	RC132V G4 LED34S/830 PSU W60L60 NOC	3400 lm	29 W
97589000	RC132V G4 LED34S/830 WIA W60L60 OC	3400 lm	29 W	36037900	RC132V G4 LED43S/840 PSU W60L60 NOC	4300 lm	34.5 W
97586900	RC132V G4 LED36S/840 WIA W60L60 NOC	3600 lm	29 W	36041600	RC132V G4 LED36S/840 PSU W60L60 OC	3600 lm	29 W
97595100	RC132V G4 LED43S/840 WIA W60L60 OC	4300 lm	29 W	36042300	RC132V G4 LED34S/830 PSU W60L60 OC	3400 lm	29 W
97597500	RC132V G4 LED43S/840 WIA W60L60 NOC	4300 lm	34.5 W	36045400	RC132V G4 LED36S/840 PSD W60L60 OC	3600 lm	29 W
97598200	RC132V G4 LED43S/840 WIA W60L60 OC W3	4300 lm	34.5 W	36046100	RC132V G4 LED34S/830 PSD W60L60 OC	3400 lm	29 W
97599900	RC132V G4 LED36S/840 WIA W60L60 NOC W3	3600 lm	29 W	36047800	RC132V G4 LED43S/840 PSD W60L60 OC	4300 lm	34.5 W
97600200	RC132V G4 LED34S/830 WIA W60L60 NOC W3	3400 lm	29 W	36054600	RC132V G4 LED34_43S/830_840 PSU W60L60 OC	4300 lm	30, 35 W

## CoreLine Panel

Order Code	Full Product Name	Valovirta alussa	Ottoteho alussa
97590600	RC132V G4 LED36S/840 WIA W30L120 NOC	3600 lm	29 W
97591300	RC132V G4 LED36S/840 WIA W30L120 OC	3600 lm	29 W
97603300	RC132V G4 LED36S/840 WIA W30L120 NOC W3	3600 lm	29 W
97604000	RC132V G4 LED36S/840 WIA W30L120 OC W3	3600 lm	29 W
36040900	RC132V G4 LED36S/840 PSU W30L120 NOC	3600 lm	29 W
36044700	RC132V G4 LED36S/840 PSU W30L120 OC	3600 lm	29 W
36051500	RC132V G4 LED36S/840 PSD W30L120 OC	3600 lm	29 W
36052200	RC132V G4 LED34S/830 PSD W30L120 OC	3400 lm	29 W
36056000	RC132V G4LED34_43S/830_840 PSUW30L120 OC	4300 lm	30, 35 W
01368100	RC132V G5 36S/840 PSU W60L60 OC ELB3	3600 lm	34 W
01386500	RC132V G5 36S/840 WIA W60L60 OC ELB3	3600 lm	34 W
01387200	RC132V G5 36S/840 WIA W60L60 NOC ELB3	3600 lm	34 W
01394000	RC132V G5 43S/840 WIA W60L60 OC ELB3	4300 lm	34 W
94999700	RC132V G5 34S/830 PSU W60L60 NOC	3400 lm	28.5 W
95000900	RC132V G5 36S/840 PSU W60L60 NOC	3600 lm	28.5 W
95004700	RC132V G5 34S/830 PSU W60L60 OC	3400 lm	28.5 W
95005400	RC132V G5 36S/840 PSU W60L60 OC	3600 lm	28.5 W
95008500	RC132V G5 34S/830 PSD W60L60 OC	3400 lm	28.5 W
95009200	RC132V G5 36S/840 PSD W60L60 OC	3600 lm	28.5 W
95010800	RC132V G5 48S/840 PSD W60L60 OC	4800 lm	40 W
95014600	RC132V G5 36S/940 PSU W60L60 NOC	3600 lm	34.5 W
95015300	RC132V G5 36S/940 PSU W60L60 OC	3600 lm	34.5 W
95017700	RC132V G5 36S/940 PSD W60L60 OC	3600 lm	34.5 W
95018400	RC132V G5 43S/940 PSD W60L60 OC	4300 lm	40 W
95019100	RC132V G5 34S/830 PSU W60L60 NOC W3	3400 lm	28.5 W
95020700	RC132V G5 36S/840 PSU W60L60 NOC W3	3600 lm	28.5 W
95022100	RC132V G5 34S/830 PSU W60L60 OC W3	3400 lm	28.5 W
95023800	RC132V G5 36S/840 PSU W60L60 OC W3	3600 lm	28.5 W
95026900	RC132V G5 34S/830 PSD W60L60 OC W5	3400 lm	28.5 W
95027600	RC132V G5 36S/840 PSD W60L60 OC W5	3600 lm	28.5 W

Order Code	Full Product Name	Valovirta alussa	Ottoteho alussa
95030600	RC132V G5 29_34_40S/830 PSU W60L60 OC	4000 lm	34.5 W
95031300	RC132V G5 31_36_43S/840 PSU W60L60 OC	4300 lm	34.5 W
95035100	RC132V G5 31_36_43S/840 PSU W60L60 NOC	4300 lm	34.5 W
95036800	RC132V G5 29_34_40S/830 PSD W60L60 OC	4000 lm	34.5 W
95037500	RC132V G5 31_36_43S/840 PSD W60L60 OC	4300 lm	34.5 W
95040500	RC132V G5 31_36_43S/940 PSD W30L120 OC	4300 lm	40 W
95363500	RC132V G5 34S/830 WIA W60L60 NOC	3400 lm	28.5 W
95364200	RC132V G5 36S/840 WIA W60L60 NOC	3600 lm	28.5 W
95366600	RC132V G5 34S/830 WIA W60L60 OC	3400 lm	28.5 W
95367300	RC132V G5 36S/840 WIA W60L60 OC	3600 lm	28.5 W
95368000	RC132V G5 43S/840 WIA W60L60 OC	4300 lm	34.5 W
95372700	RC132V G5 34S/830 WIA W60L60 NOC W3	3400 lm	28.5 W
95373400	RC132V G5 36S/840 WIA W60L60 NOC W3	3600 lm	28.5 W
95374100	RC132V G5 43S/840 WIA W60L60 NOC W3	4300 lm	34.5 W
95375800	RC132V G5 34S/830 WIA W60L60 OC W3	3400 lm	28.5 W
95376500	RC132V G5 36S/840 WIA W60L60 OC W3	3600 lm	28.5 W
95377200	RC132V G5 43S/840 WIA W60L60 OC W3	4300 lm	34.5 W
01369800	RC132V G5 36S/840 PSU W30L120 OC ELB3	3600 lm	34 W
95007800	RC132V G5 36S/840 PSU W30L120 OC	3600 lm	28.5 W
95012200	RC132V G5 34S/830 PSD W30L120 OC	3400 lm	28.5 W
95013900	RC132V G5 36S/840 PSD W30L120 OC	3600 lm	28.5 W
95016000	RC132V G5 36S/940 PSU W30L120 OC	3600 lm	34.5 W
95028300	RC132V G5 34S/830 PSD W30L120 OC W5	3400 lm	28.5 W
95029000	RC132V G5 36S/840 PSD W30L120 OC W5	3600 lm	28.5 W
95371000	RC132V G5 36S/840 WIA W30L120 OC	3600 lm	28.5 W
95378900	RC132V G5 36S/840 WIA W30L120 OC W3	3600 lm	28.5 W
95002300	RC133V G5 36S/840 PSU W62L62 NOC	3600 lm	28.5 W
95006100	RC133V G5 36S/840 PSU W62L62 OC	3600 lm	28.5 W
95011500	RC133V G5 36S/840 PSD W62L62 OC	3600 lm	28.5 W
95003000	RC132V G5 36S/840 PSU W30L120 NOC	3600 lm	28.5 W
95365900	RC132V G5 36S/840 WIA W30L120 NOC	3600 lm	28.5 W

### Valon tekniset tiedot

## CoreLine Panel

Order Code	Full Product Name	Stroboskooppi-ilmio
96711600	RC132V G4 LED36S/840 PSU W60L60 OC ELB3	1.6
96732100	RC132V G4 LED36S/840 PSU W60L60 OC W3	1.6
96733800	RC132V G4 LED34S/830 PSU W60L60 OC W3	1.6
96734500	RC132V G4 LED36S/840 PSD W60L60 OC W5	1.6
97587600	RC132V G4 LED34S/830 WIA W60L60 NOC	0
97588300	RC132V G4 LED36S/840 WIA W60L60 OC	0
97589000	RC132V G4 LED34S/830 WIA W60L60 OC	0
97586900	RC132V G4 LED36S/840 WIA W60L60 NOC	0
97595100	RC132V G4 LED43S/840 WIA W60L60 OC	0
97597500	RC132V G4 LED43S/840 WIA W60L60 NOC	0
97598200	RC132V G4 LED43S/840 WIA W60L60 OC W3	0
97599900	RC132V G4 LED36S/840 WIA W60L60 NOC W3	0
97600200	RC132V G4 LED34S/830 WIA W60L60 NOC W3	0
97601900	RC132V G4 LED36S/840 WIA W60L60 OC W3	0
97602600	RC132V G4 LED34S/830 WIA W60L60 OC W3	0
97605700	RC132V G4 LED43S/840 WIA W60L60 NOC W3	0
97606400	RC132V G4 LED36/840 WIA W60L60 OC TP(a)	0
36035500	RC132V G4 LED36S/840 PSU W60L60 NOC	1.6
36036200	RC132V G4 LED34S/830 PSU W60L60 NOC	1.6
36037900	RC132V G4 LED43S/840 PSU W60L60 NOC	1.6
36041600	RC132V G4 LED36S/840 PSU W60L60 OC	1.6
36042300	RC132V G4 LED34S/830 PSU W60L60 OC	1.6
36045400	RC132V G4 LED36S/840 PSD W60L60 OC	1.6
36046100	RC132V G4 LED34S/830 PSD W60L60 OC	1.6
36047800	RC132V G4 LED43S/840 PSD W60L60 OC	1.6
36054600	RC132V G4 LED34_43S/830_840 PSU W60L60 OC	1.6
97590600	RC132V G4 LED36S/840 WIA W30L120 NOC	0
97591300	RC132V G4 LED36S/840 WIA W30L120 OC	0
97603300	RC132V G4 LED36S/840 WIA W30L120 NOC W3	0
97604000	RC132V G4 LED36S/840 WIA W30L120 OC W3	0
36040900	RC132V G4 LED36S/840 PSU W30L120 NOC	1.6
36044700	RC132V G4 LED36S/840 PSU W30L120 OC	1.6
36051500	RC132V G4 LED36S/840 PSD W30L120 OC	1.6
36052200	RC132V G4 LED34S/830 PSD W30L120 OC	1.6
36056000	RC132V G4 LED34_43S/830_840 PSU W30L120 OC	1.6
01368100	RC132V G5 36S/840 PSU W60L60 OC ELB3	0.4
01386500	RC132V G5 36S/840 WIA W60L60 OC ELB3	0.4
01387200	RC132V G5 36S/840 WIA W60L60 NOC ELB3	0.4
01394000	RC132V G5 43S/840 WIA W60L60 OC ELB3	0.4
94999700	RC132V G5 34S/830 PSU W60L60 NOC	0.4
95000900	RC132V G5 36S/840 PSU W60L60 NOC	0.4
95004700	RC132V G5 34S/830 PSU W60L60 OC	0.4
95005400	RC132V G5 36S/840 PSU W60L60 OC	0.4
95008500	RC132V G5 34S/830 PSD W60L60 OC	0.4

Order Code	Full Product Name	Stroboskooppi-ilmio
95009200	RC132V G5 36S/840 PSD W60L60 OC	0.4
95010800	RC132V G5 48S/840 PSD W60L60 OC	0.4
95014600	RC132V G5 36S/940 PSU W60L60 NOC	0.4
95015300	RC132V G5 36S/940 PSU W60L60 OC	0.4
95017700	RC132V G5 36S/940 PSD W60L60 OC	0.4
95018400	RC132V G5 43S/940 PSD W60L60 OC	0.4
95019100	RC132V G5 34S/830 PSU W60L60 NOC W3	0.4
95020700	RC132V G5 36S/840 PSU W60L60 NOC W3	0.4
95022100	RC132V G5 34S/830 PSU W60L60 OC W3	0.4
95023800	RC132V G5 36S/840 PSU W60L60 OC W3	0.4
95026900	RC132V G5 34S/830 PSD W60L60 OC W5	0.4
95027600	RC132V G5 36S/840 PSD W60L60 OC W5	0.4
95030600	RC132V G5 29_34_40S/830 PSU W60L60 OC	0.4
95031300	RC132V G5 31_36_43S/840 PSU W60L60 OC	0.4
95035100	RC132V G5 31_36_43S/840 PSU W60L60 NOC	0.4
95036800	RC132V G5 29_34_40S/830 PSD W60L60 OC	0.4
95037500	RC132V G5 31_36_43S/840 PSD W60L60 OC	0.4
95040500	RC132V G5 31_36_43S/940 PSD W30L120 OC	0.4
95363500	RC132V G5 34S/830 WIA W60L60 NOC	0.4
95364200	RC132V G5 36S/840 WIA W60L60 NOC	0.4
95366600	RC132V G5 34S/830 WIA W60L60 OC	0.4
95367300	RC132V G5 36S/840 WIA W60L60 OC	0.4
95368000	RC132V G5 43S/840 WIA W60L60 OC	0.4
95372700	RC132V G5 34S/830 WIA W60L60 NOC W3	0.4
95373400	RC132V G5 36S/840 WIA W60L60 NOC W3	0.4
95374100	RC132V G5 43S/840 WIA W60L60 NOC W3	0.4
95375800	RC132V G5 34S/830 WIA W60L60 OC W3	0.4
95376500	RC132V G5 36S/840 WIA W60L60 OC W3	0.4
95377200	RC132V G5 43S/840 WIA W60L60 OC W3	0.4
01369800	RC132V G5 36S/840 PSU W30L120 OC ELB3	0.4
95007800	RC132V G5 36S/840 PSU W30L120 OC	0.4
95012200	RC132V G5 34S/830 PSD W30L120 OC	0.4
95013900	RC132V G5 36S/840 PSD W30L120 OC	0.4
95016000	RC132V G5 36S/940 PSU W30L120 OC	0.4
95028300	RC132V G5 34S/830 PSD W30L120 OC W5	0.4
95029000	RC132V G5 36S/840 PSD W30L120 OC W5	0.4
95371000	RC132V G5 36S/840 WIA W30L120 OC	0.4
95378900	RC132V G5 36S/840 WIA W30L120 OC W3	0.4
95002300	RC133V G5 36S/840 PSU W62L62 NOC	0.4
95006100	RC133V G5 36S/840 PSU W62L62 OC	0.4
95011500	RC133V G5 36S/840 PSD W62L62 OC	0.4
95003000	RC132V G5 36S/840 PSU W30L120 NOC	0.4
95365900	RC132V G5 36S/840 WIA W30L120 NOC	0.4

### Mekaaniset tiedot ja runko

Order Code	Full Product Name	Väri
96711600	RC132V G4 LED36S/840 PSU W60L60 OC ELB3	Valkoinen
96732100	RC132V G4 LED36S/840 PSU W60L60 OC W3	Valkoinen
96733800	RC132V G4 LED34S/830 PSU W60L60 OC W3	Valkoinen
96734500	RC132V G4 LED36S/840 PSD W60L60 OC W5	Valkoinen

Order Code	Full Product Name	Väri
97587600	RC132V G4 LED34S/830 WIA W60L60 NOC	Valkoinen
97588300	RC132V G4 LED36S/840 WIA W60L60 OC	Valkoinen
97589000	RC132V G4 LED34S/830 WIA W60L60 OC	Valkoinen
97586900	RC132V G4 LED36S/840 WIA W60L60 NOC	Valkoinen

## CoreLine Panel

Order Code	Full Product Name	Väri
97595100	RC132V G4 LED43S/840 WIA W60L60 OC	Valkoinen
97597500	RC132V G4 LED43S/840 WIA W60L60 NOC	Valkoinen
97598200	RC132V G4 LED43S/840 WIA W60L60 OC W3	Valkoinen
97599900	RC132V G4 LED36S/840 WIA W60L60 NOC W3	Valkoinen
97600200	RC132V G4 LED34S/830 WIA W60L60 NOC W3	Valkoinen
97601900	RC132V G4 LED36S/840 WIA W60L60 OC W3	Valkoinen
97602600	RC132V G4 LED34S/830 WIA W60L60 OC W3	Valkoinen
97605700	RC132V G4 LED43S/840 WIA W60L60 NOC W3	Valkoinen
97606400	RC132V G4 LED36/840 WIA W60L60 OC TP(a)	Valkoinen
36035500	RC132V G4 LED36S/840 PSU W60L60 NOC	Valkoinen
36036200	RC132V G4 LED34S/830 PSU W60L60 NOC	Valkoinen
36037900	RC132V G4 LED43S/840 PSU W60L60 NOC	Valkoinen
36041600	RC132V G4 LED36S/840 PSU W60L60 OC	Valkoinen
36042300	RC132V G4 LED34S/830 PSU W60L60 OC	Valkoinen
36045400	RC132V G4 LED36S/840 PSD W60L60 OC	Valkoinen
36046100	RC132V G4 LED34S/830 PSD W60L60 OC	Valkoinen
36047800	RC132V G4 LED43S/840 PSD W60L60 OC	Valkoinen
36054600	RC132V G4LED34_43S/830_840 PSU W60L60 OC	Valkoinen
97590600	RC132V G4 LED36S/840 WIA W30L120 NOC	Valkoinen
97591300	RC132V G4 LED36S/840 WIA W30L120 OC	Valkoinen
97603300	RC132V G4 LED36S/840 WIA W30L120 NOC W3	Valkoinen
97604000	RC132V G4 LED36S/840 WIA W30L120 OC W3	Valkoinen
36040900	RC132V G4 LED36S/840 PSU W30L120 NOC	Valkoinen
36044700	RC132V G4 LED36S/840 PSU W30L120 OC	Valkoinen
36051500	RC132V G4 LED36S/840 PSD W30L120 OC	Valkoinen
36052200	RC132V G4 LED34S/830 PSD W30L120 OC	Valkoinen
36056000	RC132V G4LED34_43S/830_840 PSUW30L120 OC	Valkoinen
01368100	RC132V G5 36S/840 PSU W60L60 OC ELB3	Valkoinen RAL 9003
01386500	RC132V G5 36S/840 WIA W60L60 OC ELB3	Valkoinen RAL 9003
01387200	RC132V G5 36S/840 WIA W60L60 NOC ELB3	Valkoinen RAL 9003
01394000	RC132V G5 43S/840 WIA W60L60 OC ELB3	Valkoinen RAL 9003
94999700	RC132V G5 34S/830 PSU W60L60 NOC	Valkoinen RAL 9003
95000900	RC132V G5 36S/840 PSU W60L60 NOC	Valkoinen RAL 9003
95004700	RC132V G5 34S/830 PSU W60L60 OC	Valkoinen RAL 9003
95005400	RC132V G5 36S/840 PSU W60L60 OC	Valkoinen RAL 9003
95008500	RC132V G5 34S/830 PSD W60L60 OC	Valkoinen RAL 9003
95009200	RC132V G5 36S/840 PSD W60L60 OC	Valkoinen RAL 9003
95010800	RC132V G5 48S/840 PSD W60L60 OC	Valkoinen RAL 9003
95014600	RC132V G5 36S/940 PSU W60L60 NOC	Valkoinen RAL 9003
95015300	RC132V G5 36S/940 PSU W60L60 OC	Valkoinen RAL 9003

Order Code	Full Product Name	Väri
95017700	RC132V G5 36S/940 PSD W60L60 OC	Valkoinen RAL 9003
95018400	RC132V G5 43S/940 PSD W60L60 OC	Valkoinen RAL 9003
95019100	RC132V G5 34S/830 PSU W60L60 NOC W3	Valkoinen RAL 9003
95020700	RC132V G5 36S/840 PSU W60L60 NOC W3	Valkoinen RAL 9003
95022100	RC132V G5 34S/830 PSU W60L60 OC W3	Valkoinen RAL 9003
95023800	RC132V G5 36S/840 PSU W60L60 OC W3	Valkoinen RAL 9003
95026900	RC132V G5 34S/830 PSD W60L60 OC W5	Valkoinen RAL 9003
95027600	RC132V G5 36S/840 PSD W60L60 OC W5	Valkoinen RAL 9003
95030600	RC132V G5 29_34_40S/830 PSU W60L60 OC	Valkoinen RAL 9003
95031300	RC132V G5 31_36_43S/840 PSU W60L60 OC	Valkoinen RAL 9003
95035100	RC132V G5 31_36_43S/840 PSU W60L60 NOC	Valkoinen RAL 9003
95036800	RC132V G5 29_34_40S/830 PSD W60L60 OC	Valkoinen RAL 9003
95037500	RC132V G5 31_36_43S/840 PSD W60L60 OC	Valkoinen RAL 9003
95040500	RC132V G5 31_36_43S/940 PSD W30L120 OC	Valkoinen RAL 9003
95363500	RC132V G5 34S/830 WIA W60L60 NOC	Valkoinen RAL 9003
95364200	RC132V G5 36S/840 WIA W60L60 NOC	Valkoinen RAL 9003
95366600	RC132V G5 34S/830 WIA W60L60 OC	Valkoinen RAL 9003
95367300	RC132V G5 36S/840 WIA W60L60 OC	Valkoinen RAL 9003
95368000	RC132V G5 43S/840 WIA W60L60 OC	Valkoinen RAL 9003
95372700	RC132V G5 34S/830 WIA W60L60 NOC W3	Valkoinen RAL 9003
95373400	RC132V G5 36S/840 WIA W60L60 NOC W3	Valkoinen RAL 9003
95374100	RC132V G5 43S/840 WIA W60L60 NOC W3	Valkoinen RAL 9003
95375800	RC132V G5 34S/830 WIA W60L60 OC W3	Valkoinen RAL 9003
95376500	RC132V G5 36S/840 WIA W60L60 OC W3	Valkoinen RAL 9003
95377200	RC132V G5 43S/840 WIA W60L60 OC W3	Valkoinen RAL 9003
01369800	RC132V G5 36S/840 PSU W30L120 OC ELB3	Valkoinen RAL 9003
95007800	RC132V G5 36S/840 PSU W30L120 OC	Valkoinen RAL 9003
95012200	RC132V G5 34S/830 PSD W30L120 OC	Valkoinen RAL 9003
95013900	RC132V G5 36S/840 PSD W30L120 OC	Valkoinen RAL 9003
95016000	RC132V G5 36S/940 PSU W30L120 OC	Valkoinen RAL 9003
95028300	RC132V G5 34S/830 PSD W30L120 OC W5	Valkoinen RAL 9003
95029000	RC132V G5 36S/840 PSD W30L120 OC W5	Valkoinen RAL 9003
95371000	RC132V G5 36S/840 WIA W30L120 OC	Valkoinen RAL 9003
95378900	RC132V G5 36S/840 WIA W30L120 OC W3	Valkoinen RAL 9003
95002300	RC133V G5 36S/840 PSU W62L62 NOC	Valkoinen RAL 9003
95006100	RC133V G5 36S/840 PSU W62L62 OC	Valkoinen RAL 9003
95011500	RC133V G5 36S/840 PSD W62L62 OC	Valkoinen RAL 9003
95003000	RC132V G5 36S/840 PSU W30L120 NOC	Valkoinen RAL 9003
95365900	RC132V G5 36S/840 WIA W30L120 NOC	Valkoinen RAL 9003

