

Specification

Code:460-8655

Nominal Voltage	12V	
Watts(15min Rate)	539.0Watts at 1.67V/cell	
Dimension	Length	335±1 mm (13.19 inches)
	Width	172±1mm (6.77 inches)
	Container Height	275±2mm (10.83 inches)
	Total Height (with Terminal)	278 ±2mm (10.94 inches)
Approx Weight	Approx 42.4 kg (93.5lbs)	
Terminal	T8	
Container Material	ABS	
Rated Capacity	147.0AH/14.7 A	(10hr , 1.80V/cell,25°C/77°F)
	143.2AH/17.9A	(8hr, 1.75V/cell,25°C/77°F)
	130.5AH/26.1 A	(5hr, 1.75V/cell,25°C/77°F)
	77.1AH /25.7A	(3hr, 1.75V/cell,25°C/77°F)
	67.5AH/67.5A	(1hr, 1.60V/cell,25°C/77°F)
Max. Discharge Current	2015A (5s)	
Internal Resistance	Approx 3.1mΩ	
Operating Temp.Range	Discharge : -15~50°C (5~122°F)	
	Charge : 0~40°C (32~104°F)	
	Storage : -15~40°C (5~104°F)	
Nominal Operating Temp. Range	25±3°C (77±5°F)	
Cycle Use	Initial Charging Current less than46.5A.Voltage	
	14.4V~15.0V at 25°C(77°F)Temp. Coefficient -30mV/°C	
Standby Use	No limit on Initial Charging Current Voltage	
	13.5V~13.8V at 25°C(77°F)Temp. Coefficient -20mV/°C	
Capacity affected by Temperature	40°C (104°F)	103%
	25°C (77°F)	100%
	0°C (32°F)	86%
Self Discharge	CT series batteries may be stored for up to 6 months at 25°C(77°F) and then a freshening charge is required. For higher temperatures the time interval will be shorter.	



Applications

- ◆ UPS (High rate)
- ◆ High power backup supply
- ◆ Emergency power supply
- ◆ Emergency lighting
- ◆ Electric starting

Constant Current Discharge (Amperes) at 25 °C (77°F)

F.V/Time	5min	10min	15min	20min	30min	45min	1h	2h	3h	4h	5h	6h	8h	10h	20h
1.85V/cell	282.7	227.9	197.5	173.4	138.3	106.0	87.0	51.5	37.2	29.6	24.6	21.4	17.1	14.3	7.57
1.80V/cell	327.4	252.0	217.6	192.0	150.7	114.1	92.1	54.0	38.8	30.7	25.5	22.1	17.6	14.7	7.75
1.75V/cell	381.3	281.8	241.2	207.9	161.8	121.1	97.3	56.3	40.1	31.5	26.1	22.6	17.9	15.0	7.93
1.70V/cell	425.9	309.7	265.0	225.9	173.3	127.9	102.0	58.2	41.2	32.3	26.7	23.0	18.3	15.3	8.06
1.67V/cell	466.9	341.3	288.5	240.4	180.8	133.3	105.6	60.1	42.4	33.1	27.3	23.5	18.7	15.5	8.20
1.60V/cell	507.8	369.2	304.4	253.4	190.0	138.9	109.5	61.7	43.2	34.0	28.0	24.2	19.1	15.9	8.36

Constant Power Discharge (Watts/Cell) at 25 °C (77°F)

F.V/Time	5min	10min	15min	20min	30min	45min	1h	2h	3h	4h	5h	6h	8h	10h	20h
1.85V/cell	537.7	438.4	382.7	337.8	271.0	209.1	172.5	102.8	74.4	59.5	49.8	43.5	34.9	29.5	15.6
1.80V/cell	615.4	480.8	417.8	371.3	293.0	223.2	181.3	106.8	77.1	61.2	51.1	44.4	35.6	30.0	15.9
1.75V/cell	710.1	530.7	458.9	398.9	312.2	235.1	190.2	110.7	79.2	62.5	52.0	45.2	36.1	30.4	16.2
1.70V/cell	785.4	577.9	499.2	430.2	332.1	246.5	197.9	113.6	80.8	63.8	53.0	45.8	36.7	30.9	16.4
1.67V/cell	852.0	630.1	539.0	454.3	344.4	255.5	203.8	116.8	82.8	65.0	53.9	46.6	37.2	31.2	16.6
1.60V/cell	908.9	667.5	558.6	468.8	354.4	261.2	207.5	117.7	82.9	65.5	54.3	47.1	37.5	31.3	16.6

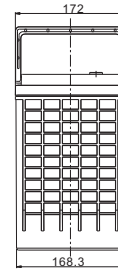
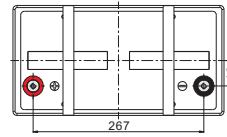
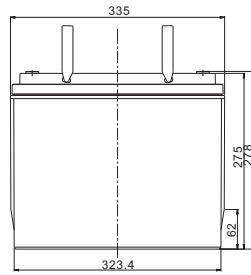
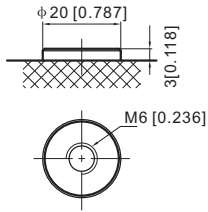
Specifications subject to change without notice.



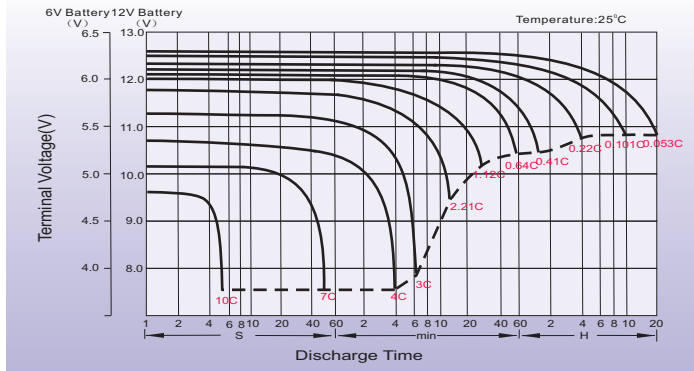
Dimensions

T8 Terminal

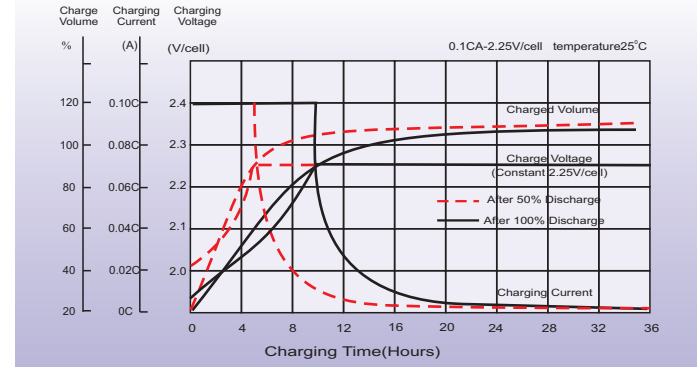
Unit: mm [inches]



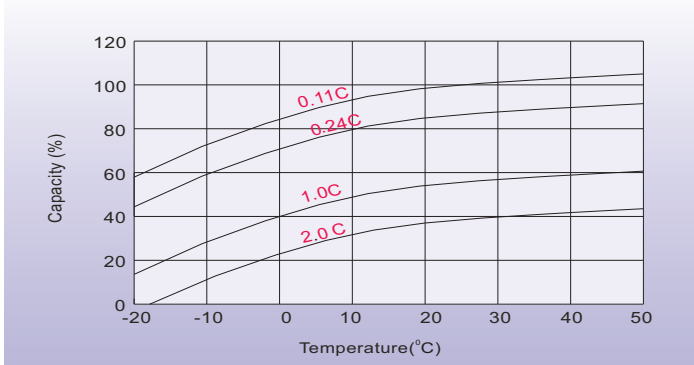
Discharge Characteristics



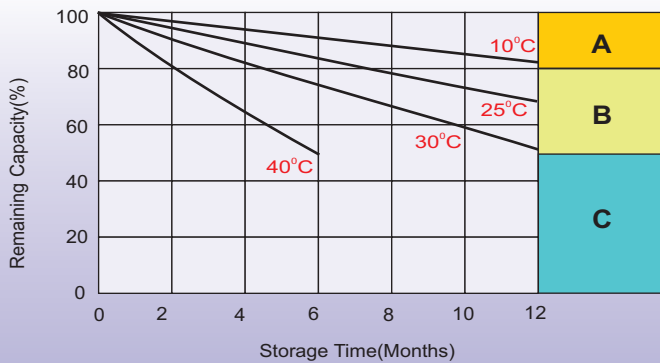
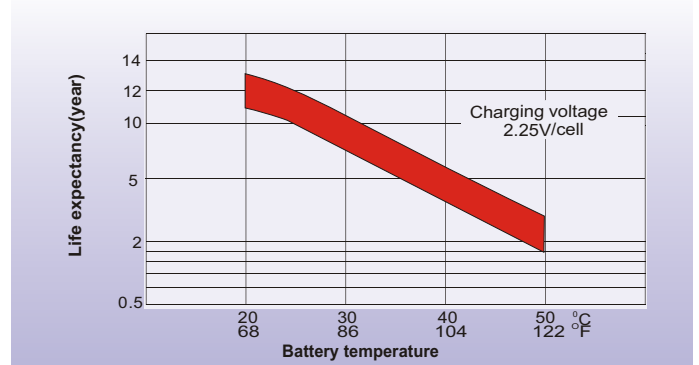
Float Charging Characteristics



Temperature Effects in Relation to Battery Capacity



Effect of Temperature on Long Term Float Life



Self Discharge Characteristics

- A** No supplementary charge required
(Carry out supplementary charge before use if 100% capacity is required.)
- B** Supplementary charge required before use. Optional charging way as below:
 1. Charged for above 3 days at limited current 0.25CA and constant volatge 2.25V/cell.
 2. Charged for above 20hours at limited current 0.25CA and constant volatge 2.45V/cell.
 3. Charged for 8-10hours at limited current 0.05CA .
- C** Supplementary charge may often fail to recover the capacity.
The battery should never be left standing till this is reached.

Sales Office

Finland and Baltic countries

Celltech Oy
Höyläämötie 11 A, 00380 Helsinki, Finland
TEL: +358 (0) 207 999 640
E-mail: info@celltech.fi
www.celltech.fi

Denmark

Celltech A/S
Lejrvej 25, 3500 Vaerloese, Denmark
TEL: +45 7025 2201
E-mail: info@celltech.dk
www.celltech.dk

Norway

Staubo Elektro-Maskin AS
Bjoernerudveien 12 C, 1266 Oslo, Norway
TEL: +47 22 75 35 00
E-Mail: post@staubo.no
www.staubo.no