

Light is OSRAM

OSRAM GinoLED RGB Diffuse

Save energy in general illumination with robust and long endurance LED strips

GFDS400TW-G1-82757



Application areas

Outdoor or Indoor contour/border lighting
Architectural Outline/Decorative lighting
Cove/Accent lighting
Signage

Standards

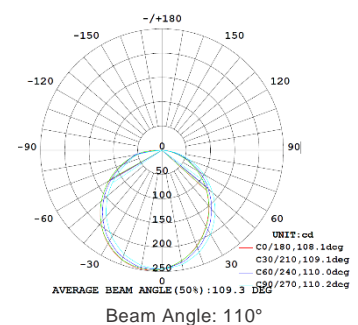
CE, RoHS

Features & Benefits

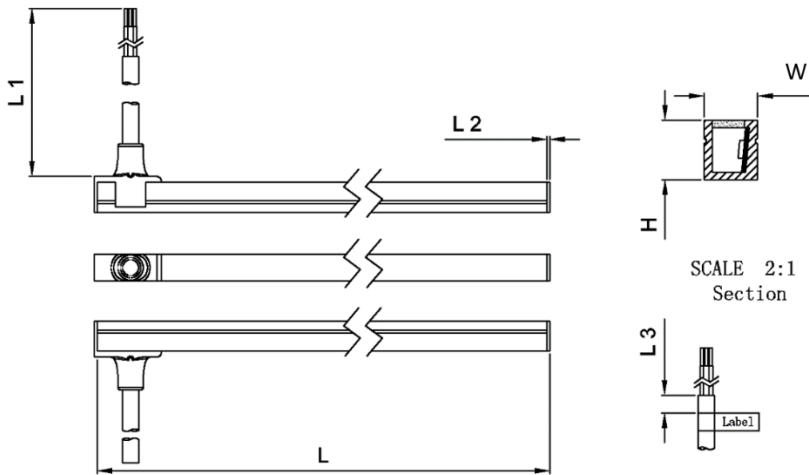
- 24V Constant Voltage Dimmable LED strip
- Tunable white with diffuse Side view solution
- Dynamic white between 2700 to 5700 K
- Luminous flux: warm white 400 lm/m cold white 420 lm/m
- IP65 protection for outdoor application
- Long lifetime: 50.000 hours @ tc max
- 5 Years OSRAM Guarantee
- System solution in combination with OSRAM 24V Constant Voltage LED drivers, optional connectors, mounting accessories

Main data

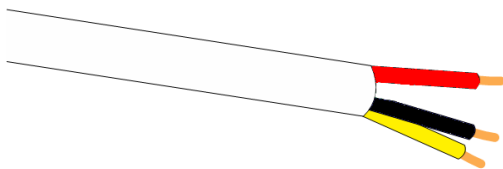
Nominal Voltage	24.0 V
Ambient temperature range (ta)	-25...+45 °C
Operating temperature max tc	65 °C
Storage temperature range	-25...+80 °C
Product cross section (excl. connector)	(W) 9 mm x (H) 10 mm



Mechanical data

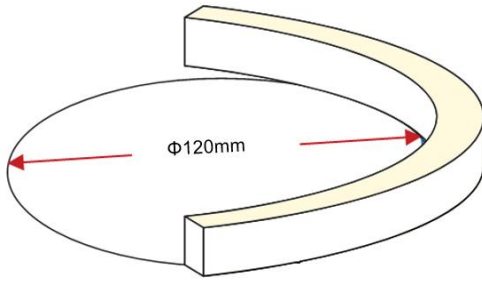


Model type	Length L [mm]	Width W [mm]	Heigh H [mm]	L1 [mm]	L2 [mm]	L3 [mm]
GFDS400TW-G1-82757-01	1002±5	9±0.3	10±0.3	380	1	20±15
GFDS400TW-G1-82757-05	5002±15	9±0.3	10±0.3	380	1	20±15



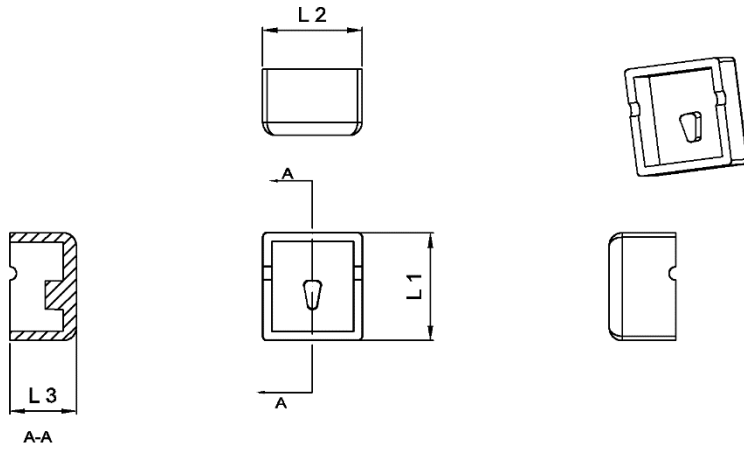
Cable Red: DC24V "+"
 Cable Yellow: Warm White
 Cable Black: Cold White

GFDT400RGB-G1-RGB TOP bending direction (yellow: light emitting surface)



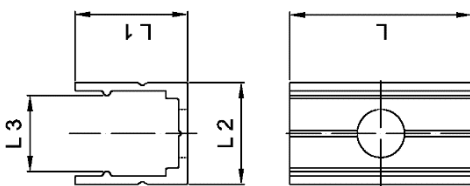
Optional accessories

Endcap: 1.3 FX-GFDS13-G1-ENDCAP



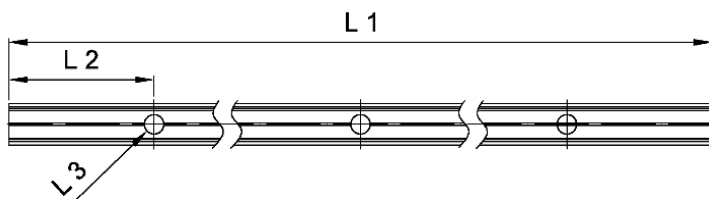
FX-GFDS13-G1-ENDCAP		
L1	L2	L3
12.2mm	11.2mm	7.5mm

Clip: 1.4 FX-GFPM-G1-TT-13H11-20



FX-GFPM-G1-TT-13H11-20			
L1	L2	L3	L
12.4mm	11.0mm	8.2mm	20.0mm

Track: FX-GFPM-G1-TT-22H20-1000



GFDS400TW-G1-82757-XX Track				
L1	L2	L3		
1000mm	150mm	5.2mm		
n) L2(mm)	L3(mm)	L4(mm)	W(mm)	H(mm)
95	100	200	20.7	22.3

Technical data

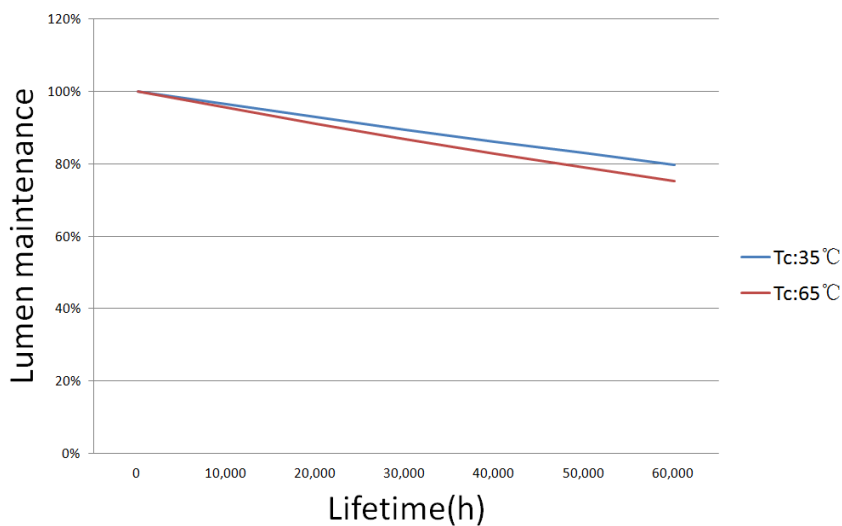
GENERAL

Dimmable	Pulse width modulation (PWM)
Dimming range	1...100%
Lifetime	50.000 hrs (L70B50 & L80B10, Tp rated)
Minimum bending radius	6 cm
Protection type	IP65
Classification acc. to IEC 62031	Built-in

REFERENCE DATA

GFDT	Color temperature [K]	Voltage [V]	lm/m	W/m	CRI	Performance @Ta=°C	
GFDS400TW-G1-82757	Warm White	2700	24V	400	6	80	25
	Cold White	5700	24V	420	6	80	25

Luminous Flux maintenance according to Tp value



Note: Light flux varies with the temperature measured @Tc point; nominal values is given @Tc = Tp. Flux increases when Tc decreases.

Ordering Data

Product description	Product code (EAN10)	Dimensions (length x width x height)	Package content
GFDS400TW-G1-82757-01	4062172147453	225X 240X 120mm	1 x Led strip
GFDS400TW-G1-82757-05	4062172147477	225X 240X 120mm	1 x Led strip
FX-GFDS13-G1-ENDCAP	4062172147491	225X 240X 120mm	1 x endcap
FX-GFPM-G1-TT-13H11-20	4062172147514	225X 240X 120mm	1 x clp
FX-GFPM-G1-TT-13H11-1000	4062172147538	225X 240X 120mm	1 x aluminum profile

Disclaimer

- The LED module itself and all its components may not be mechanical stressed.
- Assembly must not damage or destroy conducting paths on the circuit board.
- To avoid mechanical damage to the connecting cables, the module should be attached securely to the fixture. Heavy vibration should be avoided.
- Installation of LED modules with (power supplies) needs to be made with regard to all applicable electrical and safety standards. Only qualified personnel should be allowed to perform installation.
- The module net weigh is 365g.
- Please ensure that the power supply is of adequate power to operate the total load.
- The module needs to connect with constant Voltage DC driver which must has stable constant Voltage (+/-3% tolerance suggested) output.
- Electrical contact is achieved with the contact cables.
- The design of the housing should be according to the IP standards in the application.
- Pay attention to standard ESD precautions when installing the module.
- If surge protection structure not within power supplier, a lightning protector should be needed additionally for outdoor application.
- For China or Europe market, The module only applied to Class III Luminaire.
- tc max value is 70-degree, higher tc application is not recommended.
- Subject to change without notice. Errors and omission excepted. Make sure to use the most recent release. All values are average typical and cannot be used as reference for compliance tests. Always refer to the official data on web site: www.osram.com

OSRAM GmbH

Head Office:

Marcel-Breuer-Strasse 6
 80807 Munich, Germany
 Phone +49 89 6213-0
 Fax +49 89 6213-2020
www.osram.com