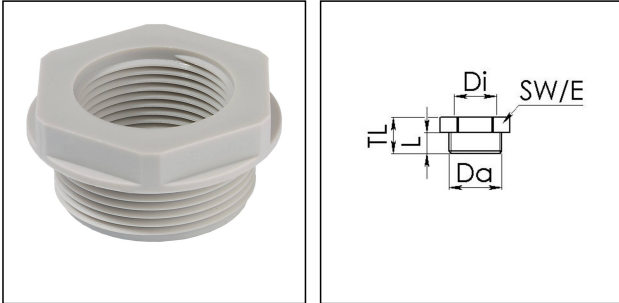


APM 48/50

Adaptor polyamide, RAL 7035, Pg48 / M50



Products may differ in size, colour and appearance to those shown. If you require further information or customisation, please contact us directly.



Material	Polyamide, fibre reinforced
Temp. range min	-40 °C
Temp. range max	100 °C
Glow wire test	650 °C
Thread type outer	PG
Ø outer thread	48
Length screw-in thread L	15 mm
Thread type inner	M
Ø inner thread	50
Lead inner	1,5
Total length TL	22 mm
Key width SW	65 mm
Collar diameter (E)	72 mm
Form	B
Product Color	RAL 7035
Order no. RAL 7035	10063676
Type	APM 48/50
Packing unit	5
ETIM-Classification	EC000938

Recommended accessories

MUG 48	10060679
ADR 48	10061428

Your Contact:

WISKA Hoppmann GmbH

Kisdorfer Weg 28 · 24568 Kaltenkirchen · Germany

☎ +49-4191-508-0 · 📠 +49-4191-508-209

contact@wiska.de · www.wiska.com

11.02.2021

Your Contact:

WISKA Hoppmann GmbH

Kisdorfer Weg 28 · 24568 Kaltenkirchen · Germany

☎ +49-4191-508-0 · 📠 +49-4191-508-209

contact@wiska.de · www.wiska.com



Your Contact:

WISKA Hoppmann GmbH

Kisdorfer Weg 28 · 24568 Kaltenkirchen · Germany

☎ +49-4191-508-0 · 📠 +49-4191-508-209

contact@wiska.de · www.wiska.com