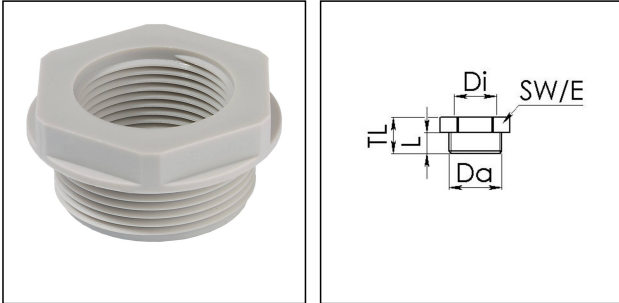


APM 36/40

Adaptor polyamide, RAL 7035, Pg36 / M40



Products may differ in size, colour and appearance to those shown. If you require further information or customisation, please contact us directly.



Material	Polyamide, fibre reinforced
Temp. range min	-40 °C
Temp. range max	100 °C
Glow wire test	650 °C
Thread type outer	PG
Ø outer thread	36
Length screw-in thread L	14 mm
Thread type inner	M
Ø inner thread	40
Lead inner	1,5
Total length TL	21 mm
Key width SW	53 mm
Collar diameter (E)	59 mm
Form	B
Product Color	RAL 7035
Order no. RAL 7035	10063670
Type	APM 36/40
Packing unit	10
ETIM-Classification	EC000938

Recommended accessories

MUG 36	10060677
ADR 36	10061426

Your Contact:

WISKA Hoppmann GmbH

Kisdorfer Weg 28 · 24568 Kaltenkirchen · Germany

☎ +49-4191-508-0 · 📠 +49-4191-508-209



contact@wiska.de · www.wiska.com

11.02.2021

Your Contact:

WISKA Hoppmann GmbH

Kisdorfer Weg 28 · 24568 Kaltenkirchen · Germany

 +49-4191-508-0 ·  +49-4191-508-209

contact@wiska.de · www.wiska.com



Your Contact:

WISKA Hoppmann GmbH

Kisdorfer Weg 28 · 24568 Kaltenkirchen · Germany

☎ +49-4191-508-0 · 📠 +49-4191-508-209

contact@wiska.de · www.wiska.com