



Product Data Sheet

ATS1230

ATS 32-zones Wireless DGP 433 MHz

Data Gathering Panels

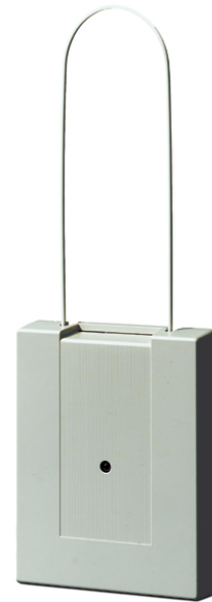
Data Gathering Panels (DGP) are used to expand the number of alarm inputs on the system and allow inputs and relays to be connected at a location remote from the Advisor MASTER panel. DGPs communicate via poll & reply messages and send alarms to the control panel for processing. The DGPs collect information from detectors, door contacts and other similar devices. There are DGPs available for conventional devices, wireless devices as well as for intelligent addressable devices. A special DGP is also available for collecting the information for either four doors or lifts.

System databus connection

The system databus is used to connect Data Gathering Panels (to provide extra zones) and Arming Stations to the ATS control panel. Remote devices can be up to 1.5 km from an ATS control panels. Arming stations and Data Gathering Panels must be connected via a 2 pair twisted shielded data cable from the system databus connection. (WCAT 52 is recommended). The shield of the data cable should be connected to earth at the ATS control panel and should be left disconnected at any other end.

Product Overview

The ATS1230 Wireless Data Gathering Panel (DGP) is a receiver on 433MHz for expanding the Advisor MASTER local bus with wireless devices. It receives information from a range of GE Interlogix compatible 433MHz sensor types programmed into the DGP. The ATS1230 features spatial diversity to minimize wireless signal nulls or dead spots and has a nominal open-air receiving range of 460m. If dead spots need to be eliminated, a 433MHz repeater may be used. It may be powered from the Advisor Master BUS power or a remote auxiliary power supply.



Standard Features

- Expands the Advisor Master panel's input capability by up to 32 zones
- Using the GE Security "Learn Mode" 433MHz Wireless Transmitter Sensors (crystal or SAW)
- May be located up to 335 meters (1100 feet) from the Advisor Master panel using WCAT52/54 cable.
- Features spatial diversity to minimize wireless signal nulls or dead spots and has a nominal open-air receiving range of 460m
- If dead spots need to be eliminated a GE Interlogix 433MHz repeater may be used
- Powered from the Advisor Master BUS power or a remote auxiliary power supply
- Fob buttons may be programmed for users to arm and disarm or to control relays
- To remotely open and close a garage door as well as arm or disarm an office security system

ATS1230

ATS 32-zones Wireless DGP 433 MHz

Specifications

| | |
|----------------------------------|---|
| Compatibility | Advisor Master panels: Version 04.03.04 or later. GE Security 433 MHz (crystal and SAW) Learn Mode wireless sensors |
| Number of Wireless Zones | 16 or 32 per Wireless DGP (Programmable) |
| Power required | 12 VDC nominal (13.8 V Max)30 mA maximum |
| Maximum recommended BUS distance | 335 meters/1100 feet using WCAT52/54, 2-pair twisted, shielded data cable. |
| Storage Temperature | -33° to 60° C (-30° to 140° F) |
| Operating Temperature | 0° to 60°C (0°to 140° F) |
| Maximum Humidity | 90% relative humidity, non-condensing |
| Wireless Signal Range | 460 meters nominal (1500 feet) 610 meters typical open air (2000 feet), may vary with application! |
| Dimensions | 10.4 cm x 13.2 cm x 2.7 cm (L x W x H), excluding antenna 19.2 cm x 13.2 cm x 2.7 cm (L x W x H), with antenna |

Ordering Information

| Part No. | Description |
|------------|---|
| ATS1230 | ATS 32-Zones Wireless DGP on 433 MHz |
| RF352I4 | 2-button keyfob RF433 MHz |
| RF354I4 | 4-button keyfob 433 MHz |
| RF320I4 | Door/window detector RF433 MHz |
| RF903I4 | Acoustic glassbreak Detector RF433 MHz |
| RF360I4 | Water-resistant medical pendant RF433 MHz |
| RF425I4 | EV425 PIR 433 MHz |
| RF425I4PI | EV425 PIR RF 433 MHz Pet immune |
| RF572NSTI4 | Smoke Sensor RF 433 MHz |
| RF620I4 | Shock sensor RF433 MHz |

Functionality

The ATS1230 Wireless Data Gathering Panel (DGP) receiver expands the Advisor Master panel's input capability by up to 32 zones using GE Security "Learn Mode" 433MHz Wireless Transmitter Sensors (crystal or SAW). The ATS1230 may be located up to 335 meters (1100 feet) from the Advisor MASTER panel using a WCAT52/54 cable. Fob buttons may be programmed for users to arm and disarm or to control relays, for example, to remotely open and close a garage door as well as arm or disarm an office security system.

