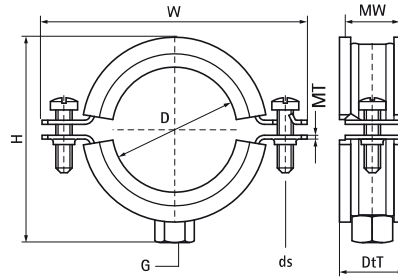


Walraven Bifix® 1301 Stainless Steel (M8)

(M0505)

for stainless steel and plastic pipes



Features & benefits

- two-screw clamp
- with quick locking system
- material: stainless steel 1.4404 (AISI 316L)
- noise insulating lining, EPDM rubber, black
- age resistant lining
- sound insulating lining according DIN 4109



Product Number	Outside Pipe Diameter	Connection Thread	Total Width x Total Height x Total Depth	Material Width x Material Thickness	Screw Size	Maximum Allowed Load Faz
<i>Reference letter</i>	<i>D</i>	<i>G</i>	<i>W x H x DtT</i>	<i>MW x MT</i>	<i>ds</i>	<i>Fa,z</i>
<i>Unit description</i>	<i>(mm)</i>		<i>(mm) x (mm) x (mm)</i>	<i>(mm) x (mm)</i>		<i>(N)</i>
3117015	11 - 14	M8	58 x 33 x 20	20 x 1.25	M6	900
3117018	15 - 19	M8	62 x 37 x 20	20 x 1.25	M6	900
3117023	20 - 23	M8	64 x 41 x 20	20 x 1.25	M6	900
3117029	25 - 28	M8	70 x 47 x 20	20 x 1.25	M6	900
3117035	31 - 35	M8	78 x 54 x 20	20 x 1.25	M6	900
3117043	40 - 43	M8	85 x 61 x 20	20 x 1.25	M6	900
3117049	47 - 51	M8	97 x 70 x 20	20 x 1.25	M6	900
3117056	52 - 56	M8	97 x 75 x 20	20 x 1.25	M6	900
3117063	57 - 64	M8	102 x 80 x 20	20 x 1.25	M6	900
3117067	64 - 67	M8	109 x 87 x 20	20 x 2	M6	1350
3117076	70 - 76	M8	118 x 96 x 20	20 x 2	M6	1350
3117091	86 - 91	M8	130 x 108 x 20	20 x 2	M6	1350
3117106	100 - 106	M8	154 x 132 x 20	20 x 2.50	M6	1350
3117116	108 - 116	M8	158 x 136 x 20	20 x 2.50	M6	1710