

Waterproof luminaires

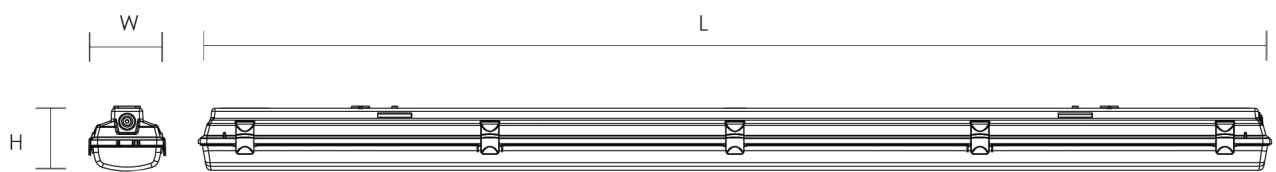


KARM



Type	DCW 114
Light source	LED module
Driver	Driver included
Input voltage	220 - 240 V
Power factor	0,95
Power consumption	38 - 56 W
Initial luminous flux	5200 - 7700 lm depending on type
Initial LED luminaire efficacy	136 lm/W depending on type
Light color	Neutral white - 4000 K
Maintenance of lumen output - L80B20	50000 hours
Color rendering index (CRI)	> 80

Optical cover	Injection molded acrylic (PMMA) As option injection molded polycarbonate (PC)
Body material	Flame retardant glass-fibre reinforced polyester
Color	Light grey
Impact resistance	IK05, IK10 as option
Ingress protection	IP65, (IP66, IP67 as option)
Electrical safety	Class II
Application	<ul style="list-style-type: none"> • Parking garages • Warehouses • General lighting



Type	L	W	H
DCW 114-120	1200	116	100 (mm)
DCW 114-150	1500	116	100 (mm)

Benefits

- Up to 50% energy savings in comparison with TL-D
- Reliable LED technology – maintenance-free
- Direct replacement for conventional waterproof luminaires in terms of light performance, installation flexibility and length
- A professional luminaire for wide usage
- Fulfills the strongest quality requirements
- New opalized diffuser with unique light transmissivity. Specially developed for LED applications.

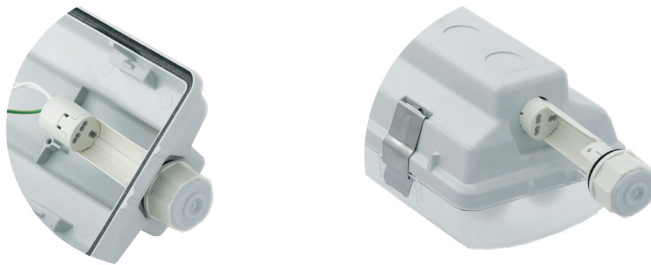
Diffuser

- Extremely high light efficiency through high light permeability, unique on the market, (up to 93% light transmissivity)
- An excellent light uniformity through well-balanced light dispersing (no shadows)
- Elimination of the dazzling effect (no glaring)
- Aesthetical appearance (no dots of the single LEDs)
- Keeping the usual, well known features of the diffuser such as chemical and heat resistance, mechanical features, UV-stabilization etc.

Product family range

Code	Type	Power consumption	Initial luminous flux	Color temperature	Diffuser	Ingress protection
700151252201	DCW 114-120 LED052 38W I PMMA IP65	38	5200	4000	Opal	IP 65
700151252202	DCW 114-150 LED065 48W I PMMA IP65	48	6500	4000	Opal	IP 65
700151252203	DCW 114-150 LED077 56W I PMMA IP65	56	7700	4000	Opal	IP 65

DCW 114 are available with IP66 protection.
IP65, IK08 - standart version, IP66, IP67, IK10 are aviable on request.



The Rapid Connector enables the electrical connection without disassembling the luminaire, thus avoiding a potential damage of the LED's inside the luminaire through electrostatic discharge (ESD).

