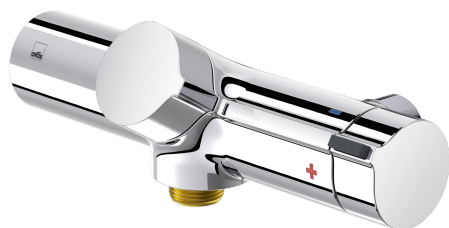


EAN: 6414150072642

www.oras.com/en/products/oras/product/7261



Pressure balancing shower faucet body. Shower faucet that reacts quickly and precisely to the changes of water pressure and keeps the water temperature as selected. Suited to places where there are several water outlets and the network always contains plenty of hot water. The temperature adjustment knob is equipped with a temperature limiter which can be bypassed by pushing a button. The faucet includes litter filters and non-return valves. Design by Harri Koskinen

- Shower
- Pressostatic
- Wall mounted
- Chrome
- Limitation option for maximum temperature
- Non-return valve(s), Litter filter(s), Pressostatic cartridge that reacts quickly and precisely to changes in water pressure

Technical data

Flow properties

Flow-rate at 300 kPa	0.23 l/s
Pressure loss with flow (0.2 l/s)	220 kPa

Technical properties

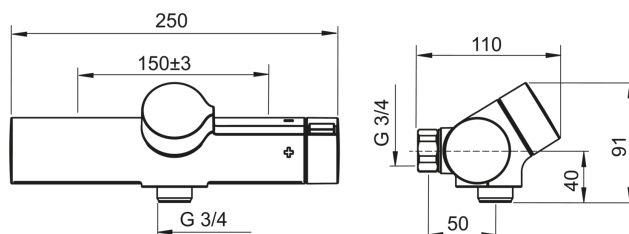
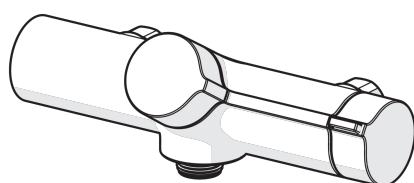
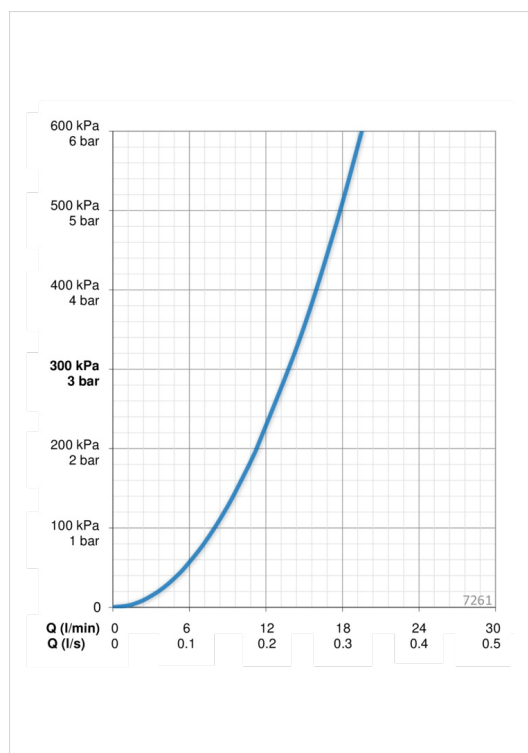
Hot water supply	max. +80°C
Working pressure	150 - 1000 kPa
Connection size	G3/4
Installation width	CC150± 3 mm
Material	brass

Regulations

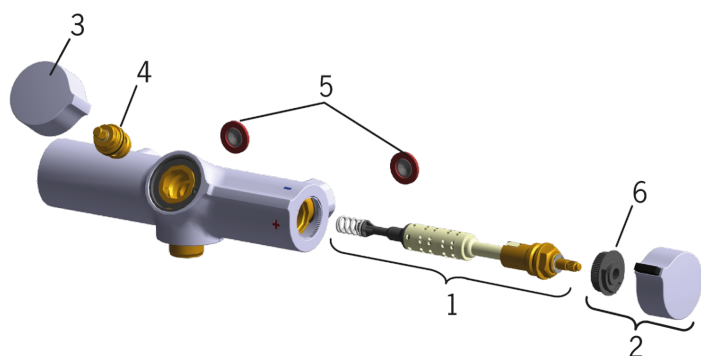
EN standard	EN 1111
Noise class	II (ISO 3822)

Type approvals

STF certificate	STF VTT-RTH-00028-11
Sintef	Sintef Nr. 0280



Spare parts



SP7261

	Code
01	169940V
02	601648V
03	601649V
04	109390
05	198292/2
06	601689V