

EAN: 6414150052491

www.oras.com/en/products/oras/product/6180



Touchless shower faucet that reacts quickly and precisely to the changes of water pressure and keeps the water temperature as selected. Suited to places where there are several water outlets and the network always contains plenty of hot water. Battery-operated 6 V. The temperature adjustment handle is equipped with a temperature limiter which can be bypassed by pushing a button. The faucet is equipped with litter filters and non-return valves.

Not recommended for a one-family house.

- Public & Semi-public
- Battery-operated, Touchless
- Wall mounted
- Chrome
- Temperature control handle
- Limitation option for maximum temperature
- Litter filter(s), Non-return valve(s)
- Adjustable settings via magnetic key

Technical data

Flow properties

Flow-rate at 300 kPa	0.2 l/s
Pressure loss with flow (0.2 l/s)	300 kPa

Technical properties

Hot water supply	max. +70°C
Working pressure	100 - 1000 kPa
Connection size	G3/4
Installation width	CC150± 3 mm
Material	brass

Software settings

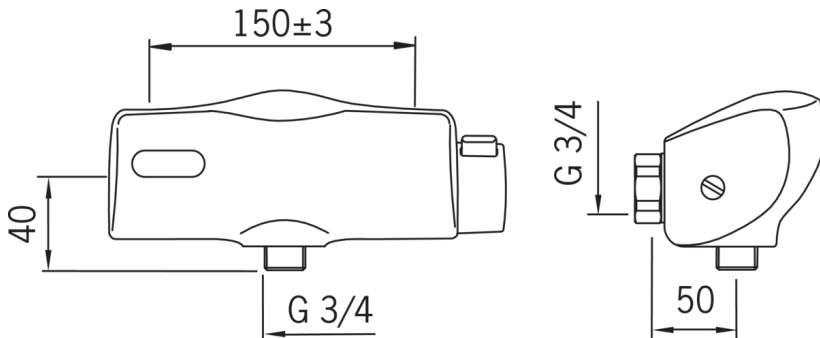
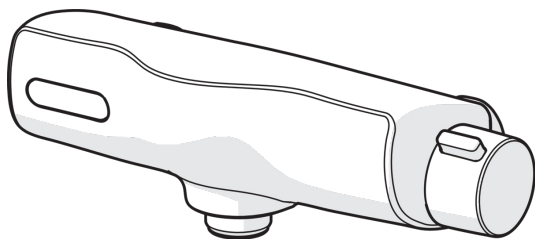
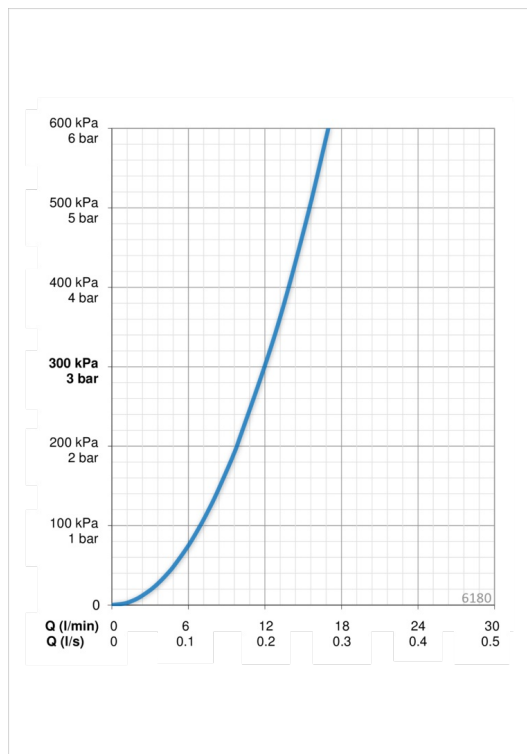
Afterflow period	5 s
Max. flow period	5 min
Opening range	0-5 cm

Electronic properties

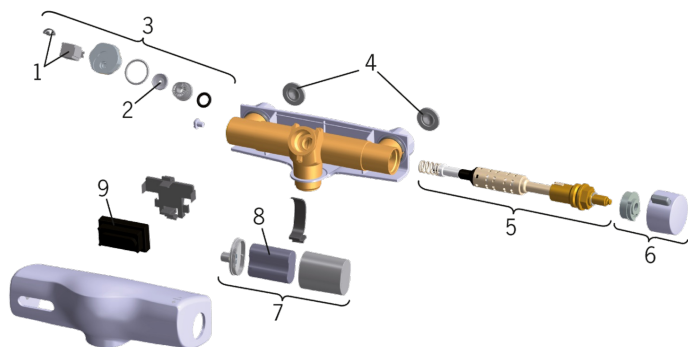
Battery	Lithium 2CR5 6 V
---------	-------------------------

Regulations

EMC Directive	CE 89/336/EEC
EN standard	EN 15091
Noise class	II (ISO 3822) Oras lab.
Protection class	IP 55



Spare parts



SP6180

	Code
01	199426V
02	199240V
03	199423V
04	178375V
05	169940V
06	169945V
07	199438V
08	198330
09	600259V