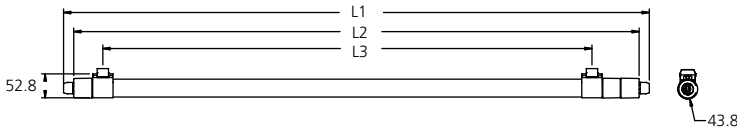
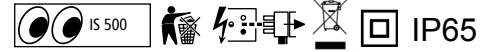
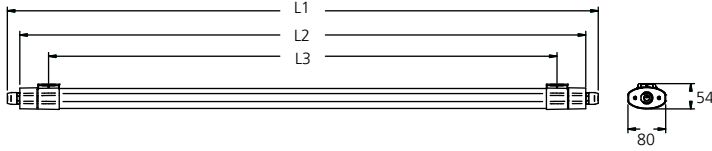


0045150-0045157

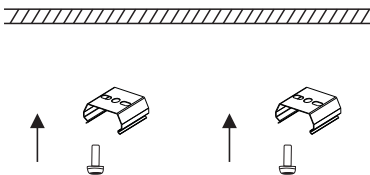


	L1(mm)	L2(mm)	L3(mm)
0045150 0045151	1291	1246	1078
0045154 0045155	1588	1543	1378



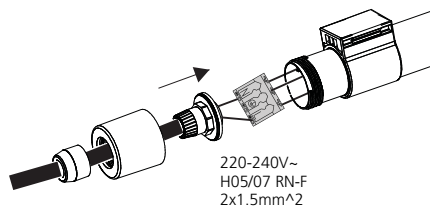
	L1(mm)	L2(mm)	L3(mm)
0045152 0045153	1253	1200	1078
0045156 0045157	1553	1500	1378

**1**

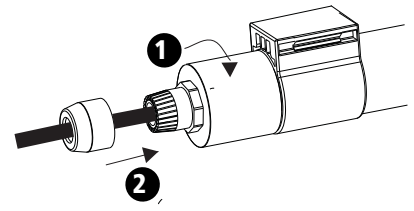


**2a**

0045150  
0045151  
0045154  
0045155

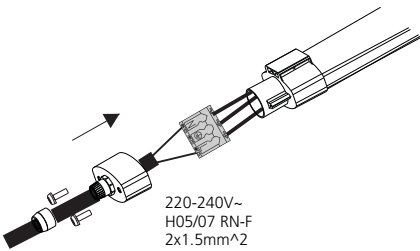


220-240V~  
H05/07 RN-F  
2x1.5mm<sup>2</sup>



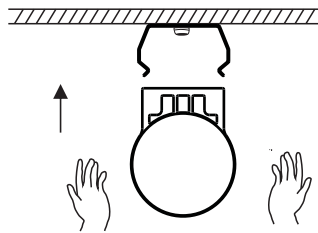
**2b**

0045152  
0045153  
0045156  
0045157



220-240V~  
H05/07 RN-F  
2x1.5mm<sup>2</sup>

**3**

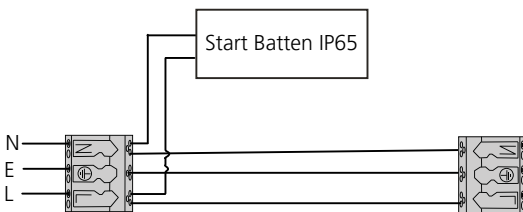
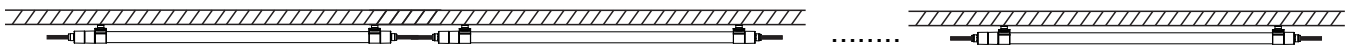


**4**



Max qty Per 10A C Type Breaker:

- 0045150/0045151: 56 pcs
- 0045152/0045153: 28 pcs
- 0045154/0045155: 42 pcs
- 0045156/0045157: 22 pcs



Mark: Start Batten IP65 is a genuine Class II luminaire, but with a 'pass through' earth.  
Luminaire Classe II avec câblage traversant

Start Batten IP65 on suojaeristetty luokan II valaisin, mutta varustettu maadoituksen ketjutuksella (läp johdotettu).