

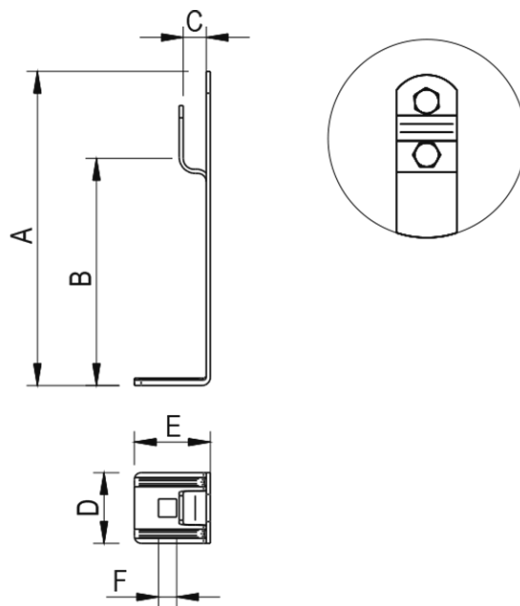
Universal wire holder

Cat. no.
95902105

Type
59.1B

Material
(StSt V2A) stainless steel
V2A

For fixing wire on the roof surface covered in trapezoidal sheet, steel panel tiles or tar board shingle. Self-drilled to surface using self drilling screw 99900101- separate order. Use screwed type holders for wire with diameter 10 mm. Holder allows to lead the wire along the roof edge.



TYP	VERSION	A	B	C	D	E	F
59.1B	clinched	115	84	8,5	26	28	7

