

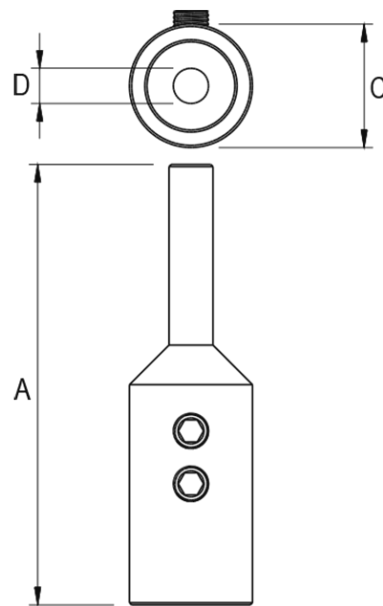
## High voltage cable end tip

**Cat. no.**  
30100109

**Type**  
301.1 AL

**Material**  
(Al) aluminium

For insulated high voltage cable connections with horizontal conductor or directly with earthing electrode. Brass tip allows connection to copper or steel construction, being resistance to weather conditions. In a set with screw protection glue and heat shrink tubing. NOTE: End tip assembly according to instruction.



TYP	A	C	D	SOCKET SCREWS
301.1 AL	115	28	9	2×M8×12