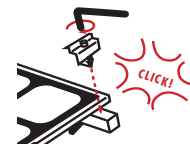
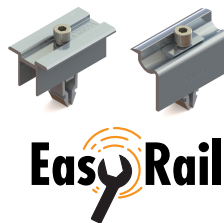
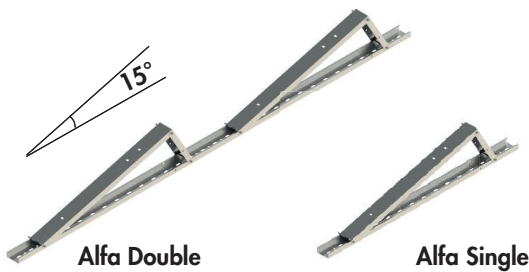
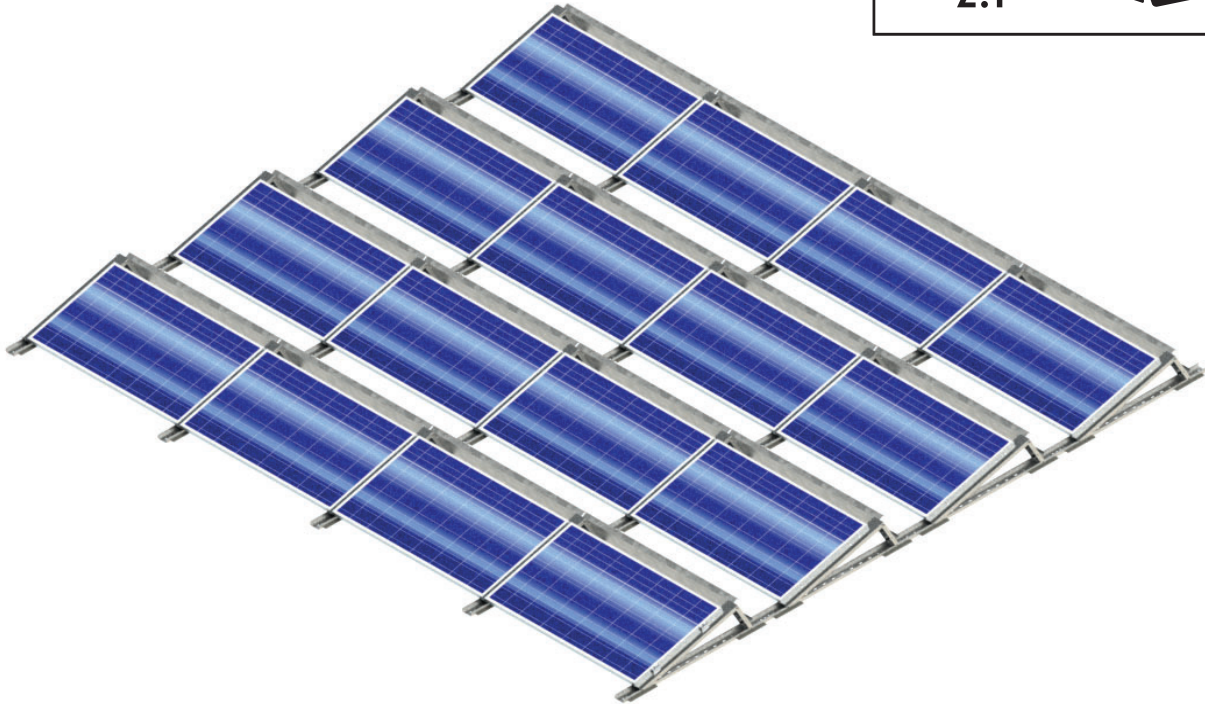


# ALFA 2.1 STAND FOR FLAT ROOFS

## INSTALLATION GUIDE

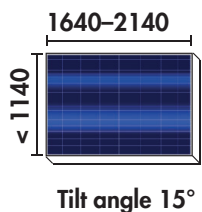


**ORIMA**<sup>®</sup>  
Nordic solar partner  
ALFA 2.1



### MEASUREMENTS

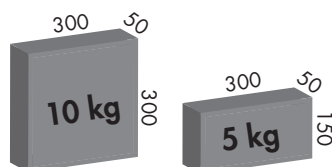
Panel size:



Alfa stands are delivered pre-assembled.

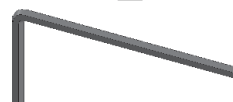
Project specific wind load calculation and ballast layout.

Maximum concrete block sizes for the ballasting of rear wind deflector.



### TOOLS

Hex key 6



Screwdriver



Socket wrenches

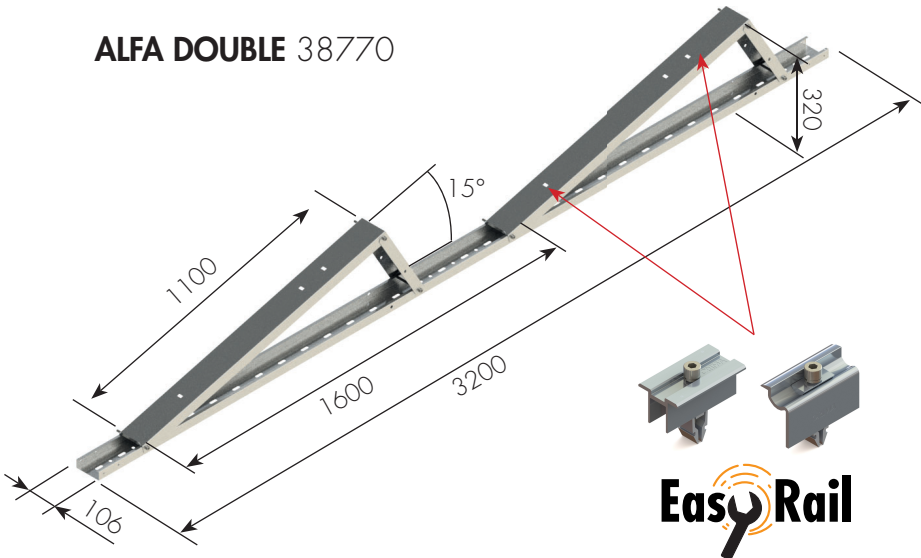


Torque wrench

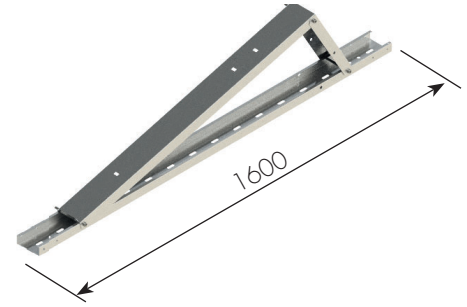


1. ALFA STANDS

**ALFA DOUBLE 38770**

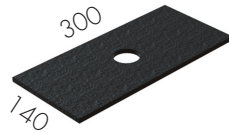


**ALFA SINGLE 38780**





**Protective Rubber Mat for Bitumen 36580**

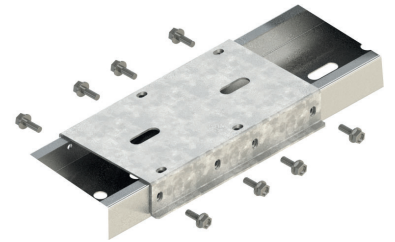
4 pc./Alfa double  
2 pc./Alfa Single



**Joint piece 38790**

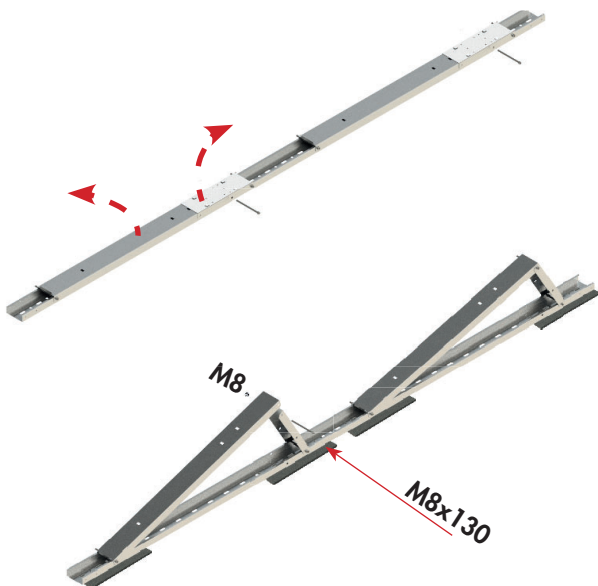
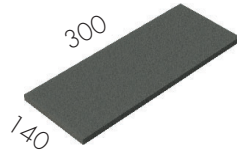
**Taprite M6x16 40124**

8 x   
AV 10 

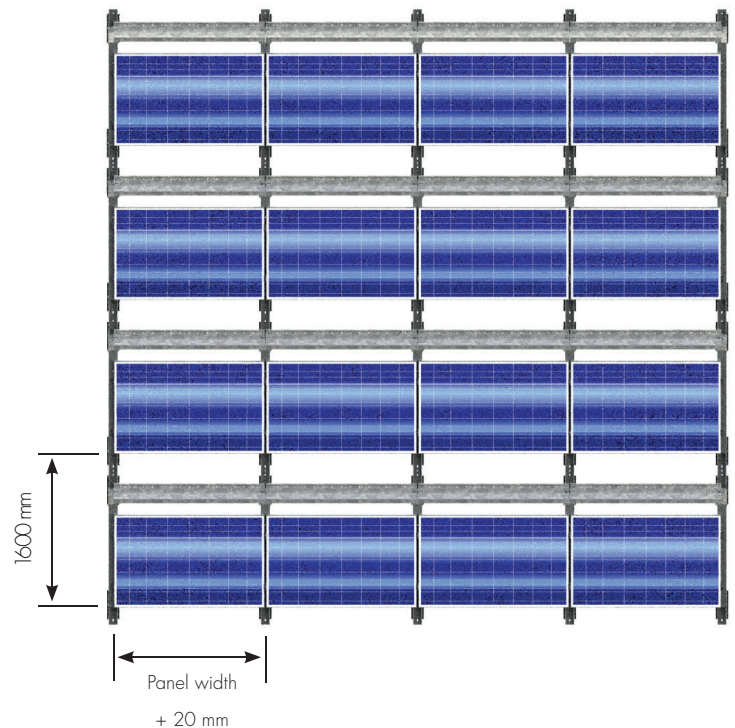


**Protective Rubber Mat for PVC 38160**

4 pc./Alfa double  
2 pc./Alfa Single



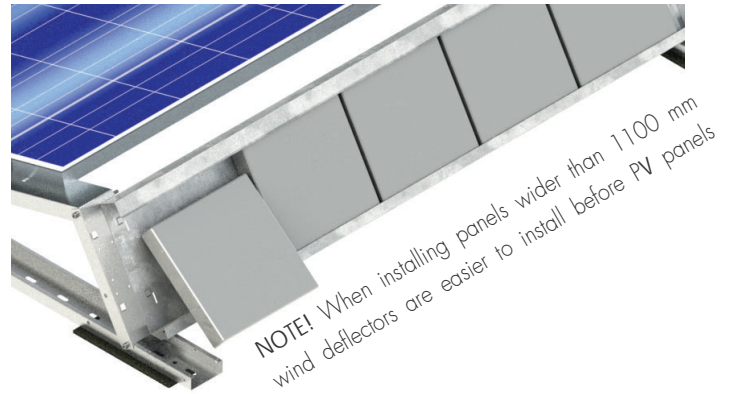
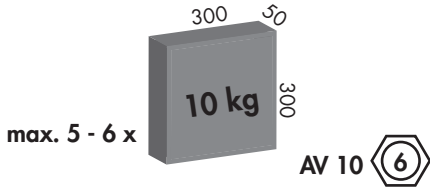
**Field spacing**



## 2. BALLAST AND WIND DEFLECTOR

### Placing of ballast blocks on rear wind deflector (38800-X)

Fastening: 2 x  M6x16 Taptite/Wind deflector.

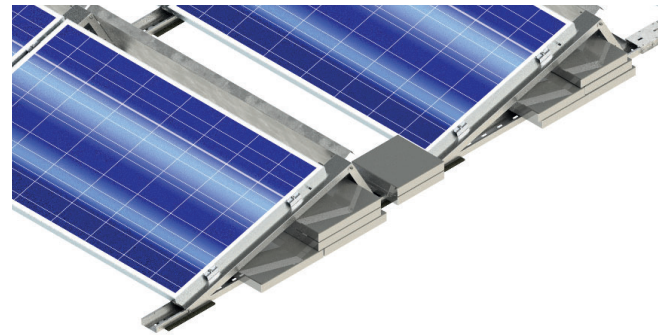
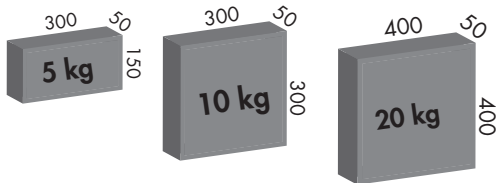


### Rear wind Deflector models

| 38800-*          | -1        | -2        | -3        | -4        | -5        | -6        | -7        | -8        | -9        | -10       |
|------------------|-----------|-----------|-----------|-----------|-----------|-----------|-----------|-----------|-----------|-----------|
| Panel range [mm] | 1640-1690 | 1690-1740 | 1740-1790 | 1790-1840 | 1840-1890 | 1890-1940 | 1940-1990 | 1990-2040 | 2040-2090 | 2090-2140 |
| Ballast blocks   | 5         | 5         | 5         | 5         | 5         | 6         | 6         | 6         | 6         | 6         |

### Secondary placing of ballast blocks

Other ballast block sizes may be placed on the bottom beam. For example:



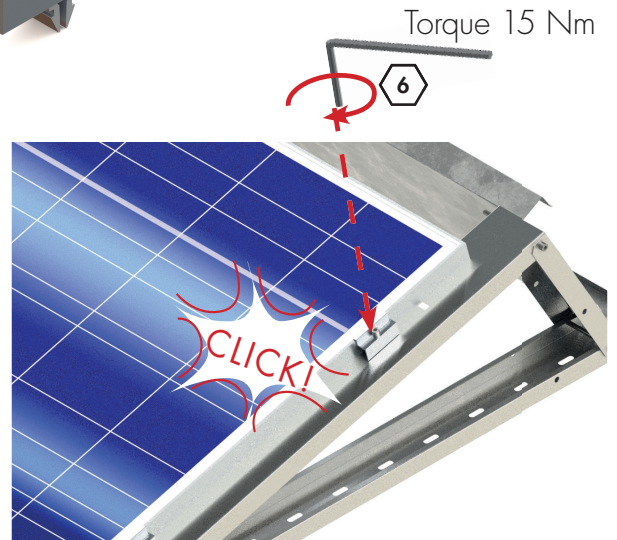
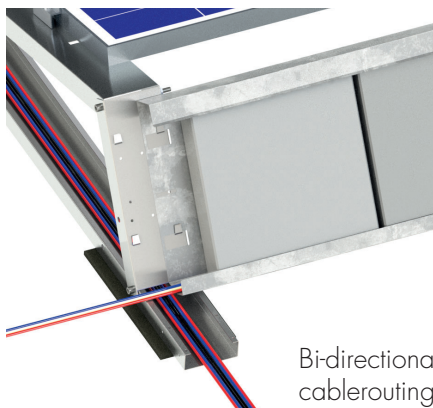
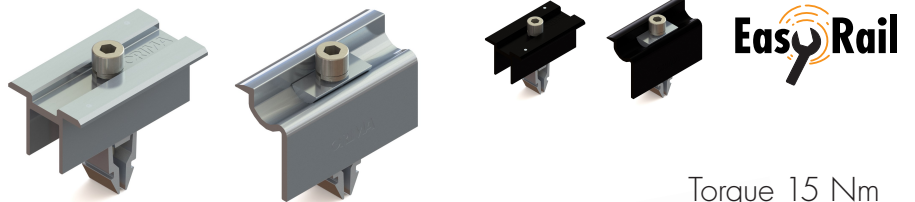
## 3. INSTALLING THE PANELS

### Easy Rail Universal middle clamp set 10 pc.

38820, black 3882033

### Easy Rail Universal End Clamp Set 8 pc.

38810, black 3881033

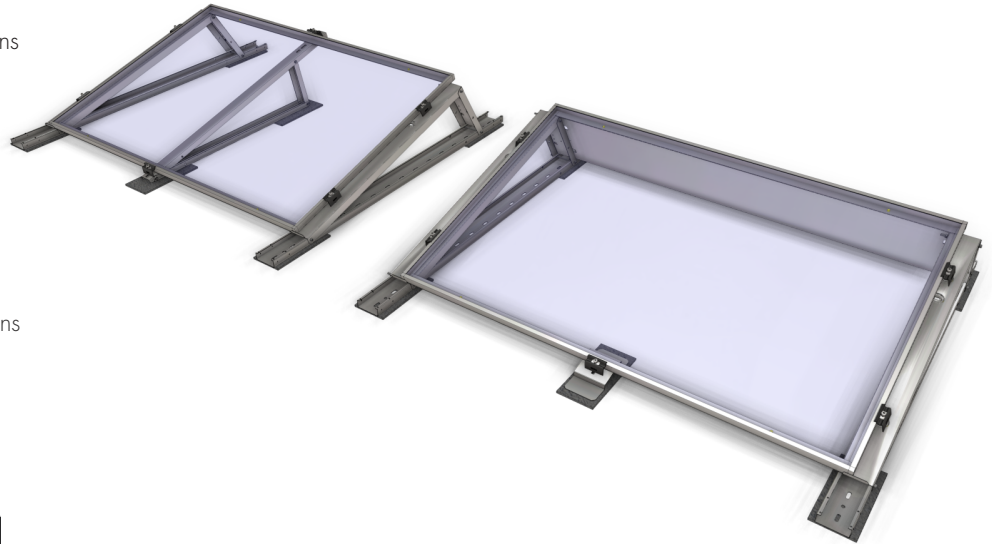


#### 4. ACCESSORIES

##### ALFA ALPINE 38760

Additional middle support for snowy regions without wind deflector.

- + 2x Protective Rubber Mat (Bitumen 36580/PVC 38160)
- + 2x End Clamp



##### ALFA ALPINE FRONT 60150

Additional middle support for snowy regions with wind deflector.

- + 1x Protective Rubber Mat (Bitumen 36580/PVC 38160)
- + 1x End Clamp

##### Solar UP - Universal Platform



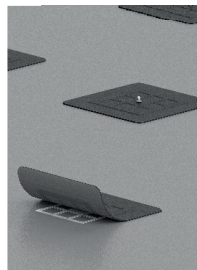
Non penetrating fixing system for flat and low slope SBS/bitumen roofs.

##### UP Plate 36300

##### UP SBS Mat 36390

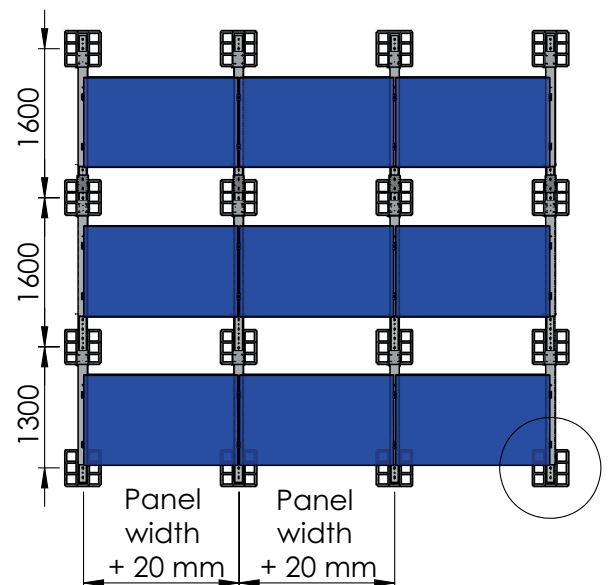
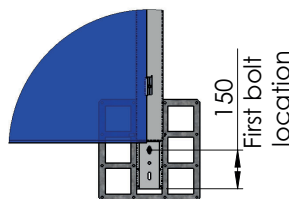
##### UP Bolt Set, 10 pc. 36310

Installation guide: Solar UP - Universal Platform



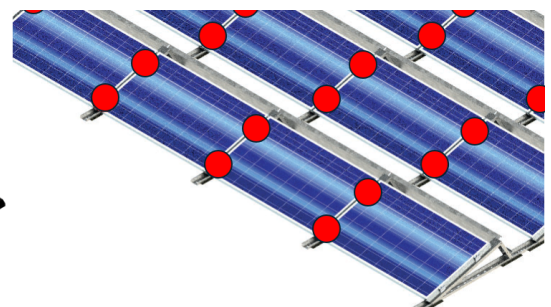
##### UP plate placing

- First 1300mm.
- Next 1600mm.



##### Cable holder 50 pc. 36550

Cable holder attached to the panel frame. Can hold up to 4 cables. One holder per one panel.



**Middle clamps** have integrated grounding pins for ensuring the electric continuity.

