

ANDMESIDEKAABEL

CAT6 U/UTP HF
CPR: Dca

Kasutus: Andmesidekaabel siseruumides kuni 250 MHz.

Kasutustemperatuur: -20 ... +60 °C

Paigaldustemperatuur: 0 ... +50 °C

Standardid: EIA/TIA 568-C.2, EN 50173, ISO/IEC 11801

EHITUS:

Juht: vaskjuhe AWG23

Juhtmete arv: 8 (single), 16 (siam)

Keerdpaarid: paarikaupa

Keskmine eraldaja: olemas

Väliskest: valge HF (305 m ja 500 m), helehall HF (100 m)

TUNNISTUS:

Paarid märgistatud värvikoodiga:

Paar 1: valge – sinine

Paar 2: valge – oranž

Paar 3: valge – roheline

Paar 4: valge – pruun

NETWORK CABLE

CAT6 U/UTP HF
CPR: Dca

Usage:

Data transmission cable indoors.

The Cat6 standard provides performance of up to 250 MHz.

Temperature range during operation: -20 - +60°C

Temperature range during installation: 0°C - +50°C

Standards: EIA/TIA 568-C.2, EN 50173, ISO/IEC 11801

STRUCTURE:

Conductor: Bare copper wire

Number of conductors: 8 (single) 16 (siam)

Twisting: 2 cores to the pair

Central separator

Outer sheath: White, HF (305m and 500m)

Light grey, HF (100m)

IDENTIFICATION

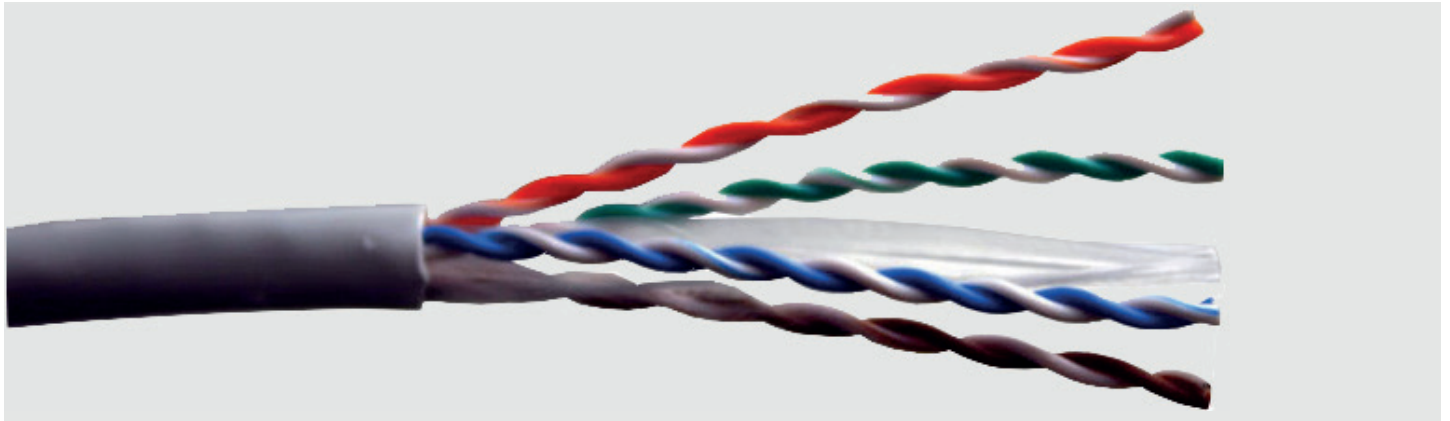
Colour code:

Pair 1: white - blue

Pair 2: white - orange

Pair 3: white - green

Pair 4: white - brown



Electrical code	SAP	Product	Outer diameter mm	Kaal kg/km	CPR	Package/m	Unit
0262401	ALN473	CAT6 U/UTP 4p LSZH Dca L100	6	40	Dca-s2,d2,a2	100m / LAATIKKO / BOX	m
0262407	ALN320	CAT6 U/UTP 4p HF Dca L305	5.4	37	Dca-s2,d2,a1	305m / LAATIKKO / BOX	m
0262405	ALN318	CAT6 U/UTP 4p HF Dca K500	5.4	37	Dca-s2,d2,a1	500m / KELA / REEL	m
0262406	ALN319	CAT6 U/UTP 2x4p HF Dca K500	5.4 / 11.5	75	Dca-s2,d2,a1	500m / KELA / REEL	m

ANDMESIDEKAABEL

CAT6A U/FTP HF

CPR: Dca

Kasutus: Andmesidekaabel siseruumides kuni 500 MHz. Kasutustemperatuur: -20 ... +60 °C
Paigaldustemperatuur: 0 ... +50 °C
Standardid: ISO/IEC 11801, IEC 61156-5, EN 50173-1, EN 50288-10, IEEE 802.3af/at/bt
EHITUS:

Juht: vaskjuhe AWG23

Juhtmete arv: 8 (single), 16 (siam)

Keerdpaarid: paarikaupa

Paari varjestus: alumiinium-lamineeritud plastfoolium

Väliskest: hall HF

TUNNISTUS:

Paarid märgistatud värvikoodiga:

Paar 1: valge – sinine

Paar 2: valge – oranž

Paar 3: valge – roheline

Paar 4: valge – pruun

NETWORK CABLE

CAT6A U/FTP HF

CPR: Dca

Usage:

Data transmission cable indoors.

The Cat6A standard provides performance of up to 500 MHz.

Temperature range during operation: -20 - +60°C

Temperature range during installation: 0°C - +50°C

Standards: ISO/IEC 11801; IEC61156-5; EN50173-1; EN 50288-10; IEEE 802.3af/at/bt

STRUCTURE:

Conductor: Bare copper wire (AWG23)

Number of conductors: 8 (single) 16 (siam)

Twisting: 2 cores to the pair

Pair screen: Al-laminated plastic foil around each pair

Outer sheath: Grey, HF

IDENTIFICATION

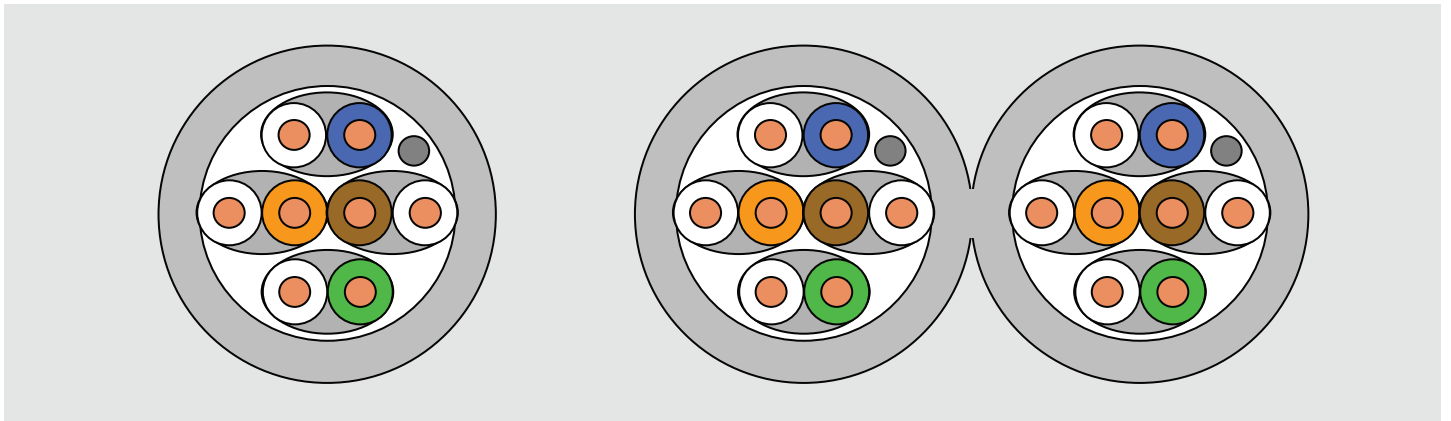
Colour code:

Pair 1: white - blue

Pair 2: white - orange

Pair 3: white - green

Pair 4: white - brown



Electrical code	SAP	Product	Outer diameter mm	kg/km	CPR	Package/m	Unit
0262459	CCN183	CAT6A U/FTP 4p HF Dca L305	6.9	46	Dca-s2,d2,a1	305m / LAATIKKO / BOX	m
0262460	CCN185	CAT6A U/FTP 4p HF Dca K500	6.9	46	Dca-s2,d2,a1	500m / KELA / REEL	m
0262461	CCN184	CAT6A U/FTP 2x4p HF Dca K500	6.9 / 14	97	Dca-s2,d1,a1	500m / KELA / REEL	m