

Technical Support

If you need any technical help, please visit our official support site and contact our support team before returning the products, <https://support.reolink.com>.

Technische Unterstützung

Wenn Sie Hilfe brauchen, kontaktieren Sie bitte Reolink Support Team zuerst, bevor Sie Ihre Bestellung zurücksenden. Meiste Fragen oder Probleme können von unserem Online Support Center beantwortet und gelöst werden: <https://support.reolink.com>.

Support technique

Si vous avez besoin d'aide, veuillez contacter Reolink avant de retourner votre produit. La plupart des questions peuvent être répondues via notre centre de support en ligne à l'adresse <https://support.reolink.com>.

Supporto Tecnico

Se avete bisogno di aiuto, le chiediamo gentilmente di contattare Reolink prima di restituire il prodotto. La maggior parte delle domande può essere risolta tramite il nostro centro di assistenza online all'indirizzo <https://support.reolink.com>.

Soporte técnico

Si necesita ayuda, comuníquese con Reolink antes de devolver su producto. La mayoría de las preguntas se pueden responder a través de nuestro centro de soporte en línea en <https://support.reolink.com>.

REOLINK INNOVATION LIMITED

FLAT/RM 705 7/F FA YUEN COMMERCIAL BUILDING 75-77 FA YUEN STREET MONG KOK KL HONG KONG



FR

Cet appareil,
ses accessoires,
piles et cordons
se recyclent

À DÉPOSER
EN MAGASIN



ou

À DÉPOSER
EN DÉCHÈTERIE



PAP 22

Raccolta Carta

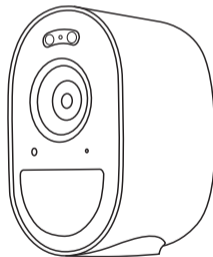
Points de collecte sur www.quefairedemesdechets.fr
Privilégiez la réparation ou le don de votre appareil !

58.03.008.0384

Reolink

Reolink Argus 3 Pro

Operational Instructions



@ReolinkTech <https://reolink.com>

Item No. : B330

Contents

| | | |
|----|------------------------------|----|
| 01 | What's in the Box | 02 |
| 02 | Product Overview | 04 |
| 03 | Set up the Camera | 05 |
| 04 | Charge the Camera | 07 |
| 05 | Install the Camera | 09 |
| 06 | Troubleshooting | 17 |
| 07 | Specifications | 18 |
| 08 | Important Safety Instruction | 18 |
| 09 | Legal Disclaimer | 20 |
| 10 | Notification of Compliance | 21 |

01 What's in the Box



Camera



Mounting Bracket

Mounting
Template

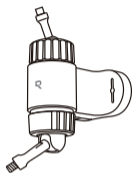
USB-C Cable



Pack of Screws

Surveillance
StickerOperational
Instructions

* The following accessories come only with the Solar Panel set.



Integrated
Bracket



Strap



Bracket
Bottom Cover



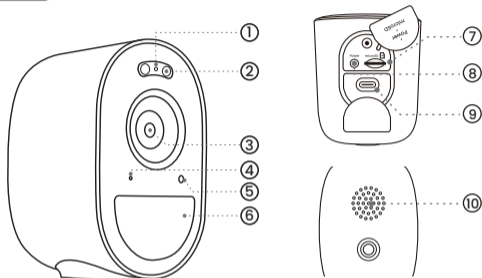
Mounting
Template

Need but Not Included



Screwdriver

02 Product Overview



① Status Light

② Spotlight

③ Lens

④ Microphone

⑤ Daylight Sensor

⑥ PIR Motion Sensor

⑦ microSD Card Slot

⑧ Power Switch

⑨ USB-C Port

⑩ Speaker

Camera States of Different Power Switch Actions:

Power on: Press and hold for 3s

Power off: Press and hold for 3s

Reset to factory settings: Press the button 3 times in a row when the camera is on

03 Set up the Camera

Set up the Camera using a Smartphone

Step 1 Scan to download the Reolink App from the App Store or Google Play store.

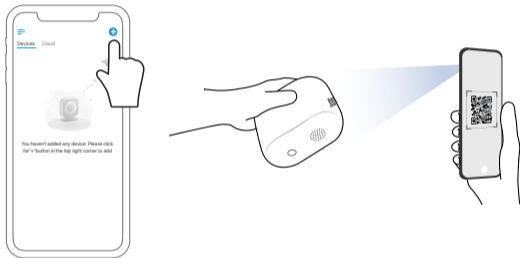


Step 2 Turn on the power switch to power on the camera.



Step 3 Launch the Reolink App, click the “+” button in the top right corner to add the camera. Scan the QR code on the device and follow the onscreen instructions to finish initial setup.

Step 4 In the “Add Device” page, configure the Wi-Fi connection by enabling Bluetooth on your phone and follow the onscreen instructions to finish the initial setup.



NOTE:

This device supports 2.4 GHz and 5 GHz Wi-Fi networks. It is recommended to connect the device to 5 GHz Wi-Fi for a better network experience.

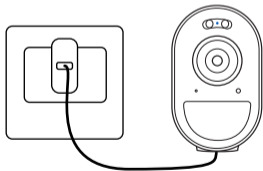
04 Charge the Camera

It's recommended to fully charge the camera before installing it.

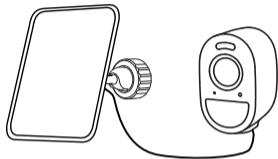
Charging Indicator:

- ◉ Blue flashing LED: Charging
- Solid blue LED: Fully charged

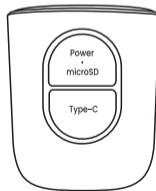
Charge the camera with a 5V power adapter (not included).



Charge the camera with the Reolink Solar Panel (not included if you only purchase the camera).



For better weatherproof performance, please always cover the charging port with the rubber plug after charging the camera.



05 Install the Camera

01/Installation Tips

Notes on Camera Installation Position

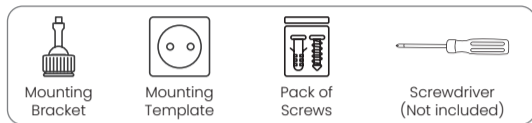
- Install the camera 2-3 meters (7-10 ft) above ground. This height maximizes the detection range of the PIR motion sensor.
- For effective detection, please install the camera angularly.



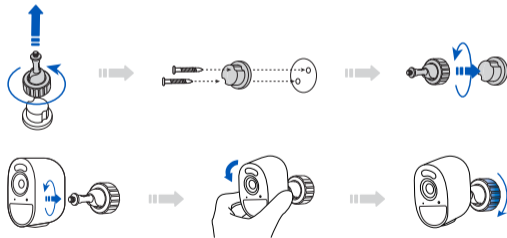
NOTE:

If a moving object approaches the PIR sensor vertically, the camera may fail to detect motion.

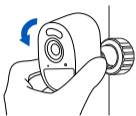
Mount the Camera



- Screw the camera to the bracket.
- Adjust the camera angle for the best field of view.
- Secure the camera by turning the base clockwise.



a-Wall Mounting



b-Ceiling Mounting



Mount the Solar Panel (Optional)

If you're using a Reolink solar panel with your camera, follow the guidelines below.



Place your solar panel where it gets at least **20 minutes** of direct sunlight daily.

A/Integrated Mounting



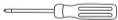
Integrated
Bracket



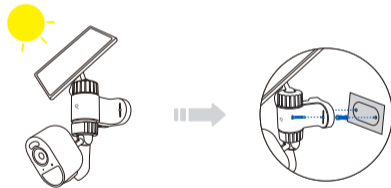
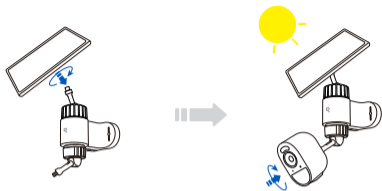
Mounting
Template



Pack of
Screws

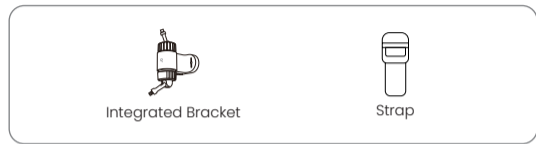


Screwdriver
(Not included)

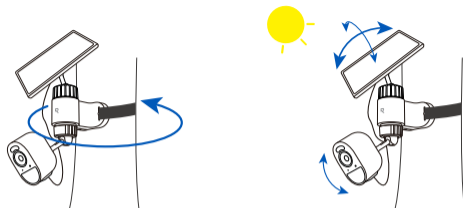
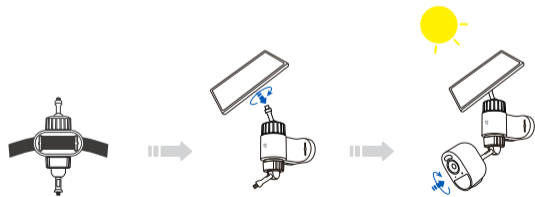


Mount the solar panel directly on top of the camera. Make sure the panel doesn't block the camera's view.

B/Integrated Strap Mounting

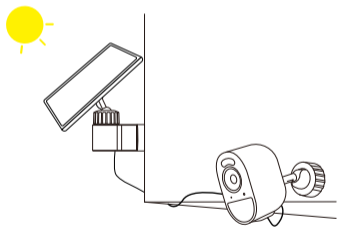
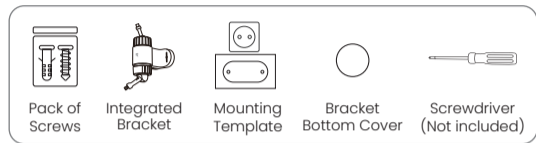


Thread the strap through the bracket for flexible attachment to trees, poles, pipes, etc.



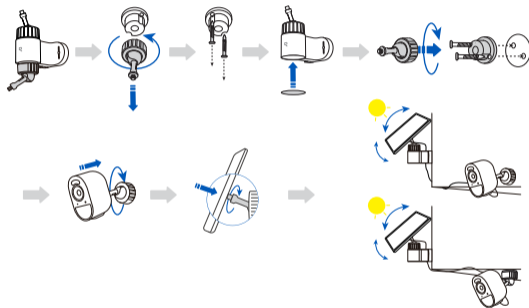
Note: You can use an extension cable to connect the camera to the solar panel for more flexible installation.

C/Spreete Wall & Ceiling Mounting



Install the solar panel in a location with the longest and most direct sunlight exposure to ensure optimal sunlight absorption and energy conversion.

Loosen the nut counterclockwise to adjust the solar panel angle for maximum sunlight exposure. Tighten the nut clockwise to secure the panel.



Note: You can use an extension cable to connect the camera to the solar panel for more flexible installation.

06 Troubleshooting

Camera is Not Powering On

If your camera is not turning on, please apply the following solutions:

Charge the battery with a DC 5V/2A power adapter. When the blue light is on, the battery is fully charged.

If the problem is not solved, please contact Reolink Support.

Failed to Connect to Wi-Fi During Initial Setup Process

If the camera fails to connect to Wi-Fi, please try the following solutions:

Ensure that you have entered the correct Wi-Fi password.
Put the camera closer to your router to ensure a strong Wi-Fi signal.
Change the encryption method of the Wi-Fi network to WPA2-PSK/WPA-PSK on your router interface.
Change your Wi-Fi SSID or password and make sure that SSID is within 31 characters and password is within 64 characters.
Set your password using only the characters available on the keyboard.

If the problem is not solved, please contact Reolink Support.

07 Specifications

Operating Temperature: -20°C to 55°C (-4°F to 131°F)

Size: 67.6*56*90.5 mm

Weight: 218 g

08 Important Safety Instructions

Please read the instructions carefully before using the camera. For tips on extending battery life, visit our support post: <https://support.reolink.com/hc/en-us/articles/360006991893>

1. Charge the battery with a standard and high-quality DC 5V battery charger or Reolink solar panel. It is not compatible with solar panels from any other brands.
2. Replace only with the same or equivalent type of equipment and accessories recommended by the manufacturer. Using an incorrect type poses an explosion risk.
3. Do not remove a built-in battery from the camera.
4. Charge the battery only in temperatures between 0°C and 45°C. And use it only in temperatures ranging from -20°C and 55°C.

5. Do not charge, use or store a battery camera near heat sources, such as space heaters, cooking surfaces, cooking appliances, irons, radiators, or fireplaces. Extreme heat may cause an explosion.
6. Do not expose the camera with a battery to extremely low air pressure environments, as this may cause an explosion.
7. Do not place the camera with a battery in hot wilderness areas or expose it to lightning, as this poses a risk of fire.
8. Do not hit or heavily compress the camera with a battery, as this poses a risk of fire or explosion.
9. Do not use the battery if it appears damaged, swollen, or compromised in any way (e.g., leaking, emitting odors, dented, corroded, rusted, cracked, swollen, melted, or scratched).
10. Keep the camera and battery away from children.
11. Do not ingest or swallow battery. If the battery is ingested or swallowed, it can cause severe internal burns and damage. Seek immediate medical attention if you suspect the battery has been ingested or placed inside any part of the body.
12. Do not attempt to disassemble, repair, or alter the camera or battery by yourself.
13. Keep the charging port dry, clean and free of any debris. Cover it with the rubber plug after the battery is fully charged.
14. Always follow the local safety laws and regulations when using the camera.
15. Always follow the local waste and recycling laws to dispose of used batteries.
16. The product doesn't include assistive features. Customers with disabilities can use devices with assistive features, like computers or smartphones with text-to-speech tools, for accessibility. For individuals with visual or physical impairments, professional help may be needed for installation. Once installed, the product can be controlled entirely via the app.

09

Legal Disclaimer

To the maximum extent permitted by applicable law, this document and the product described, with its hardware, software, firmware, and services, are delivered on an "as-is" and "as-available" basis, with all faults and without warranty of any kind. Reolink disclaims all warranties, express or implied, including but not limited to, warranties of merchantability, satisfactory quality, fitness for a particular purpose, accuracy, and non-infringement of third-party rights. In no event will Reolink, its directors, officers, employees, or agents be liable to you for any special, consequential, incidental or indirect damages, including but not limited to damages for loss of business profits, business interruption, or loss of data or documentation, in connection with the use of this product, even if Reolink has been advised of the possibility of such damages.

To the extent permitted by applicable law, your use of the Reolink products and services is at your sole risk and you assume all risks associated with internet access. Reolink does not take any responsibilities for abnormal operation, privacy leakage or other damages resulting from cyber attacks, hacker attacks, virus inspections, or other internet security risks. However, Reolink will provide timely technical support if required.

The laws and regulations related to this product vary by jurisdiction. Please check all relevant laws and regulations in your jurisdiction before using this product to ensure that your use conforms to the applicable law and regulation. During the use of the product, you must comply with relevant local laws and regulations. Reolink is not responsible for any

illegal or improper use and its consequences. Reolink is not liable in the event that this product is used with illegitimate purposes, such as third-party rights infringement, medical treatment, safety equipment, or other situations where the product failure could lead to death or personal injury, or for weapons of mass destruction, chemical and biological weapons, nuclear explosion, and any unsafe nuclear energy uses or anti-humanity purposes. In the event of any conflicts between this manual and the applicable law, the latter prevails.

10 Notification of Compliance

SIMPLIFIED EU AND UK DECLARATION OF CONFORMITY

Hereby, REOLINK INNOVATION LIMITED declares that the radio equipment type [refer to the cover of the Operational Instructions] is in compliance with Directive 2014/53/EU. The full text of the EU and UK declaration of conformity is available at the following internet address:
<https://support.reolink.com/hc/en-us/articles/36788378727065/>

RF exposure information: The Maximum Permissible Exposure (MPE) level has been calculated based on a distance of 20cm between the device and the human body. To maintain compliance with RF exposure requirement, use product that maintain a 20cm distance between the device and human body.

Turning off the wireless network requires shutting down or resetting the

device.

The device only works when connected to the internet. Reolink Battery-Powered Cameras Comply with the EU Energy-Related Products Directive (EU) 2023/826: <https://support.reolink.com/hc/en-us/articles/47507051735193>

Wi-Fi Operating Frequency

OPERATING FREQUENCY:

2412~2472MHz RF Power: ≤20dBm(EIRP)

5150~5250MHz RF Power: ≤23dBm(EIRP)

5250~5350MHz RF Power: ≤23dBm(EIRP)

5470~5725MHz RF Power: ≤23dBm(EIRP)

5725~5875MHz RF Power: ≤14dBm(EIRP)

Bluetooth Operating Frequency

OPERATING FREQUENCY :

2402~2480MHz RF Power: ≤10dBm(EIRP)



The functions of Wireless Access Systems including Radio Local Area Networks (WAS/RLANs) within the band 5150~5350 MHz for this device are restricted to indoor use only within all European Union countries (BE/BG/CZ/DK/DE/EE/IE/EL/ES/FR/HR/IT/CY/LV/LT/LU/HU/MT/NL/AT/PL/PT/RO/SI/SK/FI/SE/TR/NO/CH/IS/LI/UK(NI))



Correct Disposal of This Product

This marking indicates that this product should not be disposed with other household wastes throughout the EU. To prevent possible harm to the environment or human health from uncontrolled waste disposal, recycle it responsibly to promote the sustainable reuse of material resources. To return your used device, please use the return and collection systems or contact the retailer where the product was purchased. They can take this product for environmentally safe recycling.

Limited Warranty

This product comes with a 2-year limited warranty that is valid only if purchased from Reolink Official Store or a Reolink authorized reseller. Learn more: <https://reolink.com/warranty-and-return/>.

NOTE: We hope that you enjoy the new purchase. But if you are not satisfied with the product and plan to return, we strongly suggest that you reset the camera to factory default settings and take out the inserted SD card before returning.

Terms and Privacy

Use of the product is subject to your agreement to the Terms of Service and Privacy Policy at reolink.com

Technical Support

If you need any technical help, please visit our official support site and contact our support team before returning the products, <https://support.reolink.com>.

Terms of Service

By using the Product Software that is embedded on the Reolink product, you agree to the terms&conditions between you and Reolink. Learn more: <https://reolink.com/terms-conditions/>

Trademarks Acknowledgement

"Reolink" and other Reolink's trademarks and logos are the properties of Reolink. Other trademarks and logos mentioned are the properties of their respective owners.