

#### Technical Support

If you need any technical help, please visit our official support site and contact our support team before returning the products, <https://support.reolink.com>.

#### Technische Unterstützung

Wenn Sie Hilfe brauchen, kontaktieren Sie bitte Reolink Support Team zuerst, bevor Sie Ihre Bestellung zurücksenden. Meiste Fragen oder Probleme können von unserem Online Support Center beantwortet und gelöst werden: <https://support.reolink.com>.

#### Support technique

Si vous avez besoin d'aide, veuillez contacter Reolink avant de retourner votre produit. La plupart des questions peuvent être répondues via notre centre de support en ligne à l'adresse <https://support.reolink.com>.

#### Supporto Tecnico

Se avete bisogno di aiuto, le chiediamo gentilmente di contattare Reolink prima di restituire il prodotto. La maggior parte delle domande può essere risolta tramite il nostro centro di assistenza online all'indirizzo <https://support.reolink.com>.

#### Soporte técnico

Si necesita ayuda, comuníquese con Reolink antes de devolver su producto. La mayoría de las preguntas se pueden responder a través de nuestro centro de soporte en línea en <https://support.reolink.com>.

REOLINK INNOVATION LIMITED  
FLAT/RM 705 7/F FA YUEN COMMERCIAL BUILDING  
75-77 FA YUEN STREET MONG KOK KL HONG KONG

February 2025  
58.03.008.0324

# Reolink

EN/DE/FR/IT/ES  
Item No.: W740, W750X

## Operational Instructions

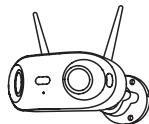
Apply to: Reolink Elite WiFi,  
Reolink Elite XPro WiFi

  @ReolinkTech <https://reolink.com>

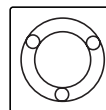
## Contents

What's in the Box	2
Device Overview	3
Set up the Camera	4
Install the Camera	6
Troubleshooting	9
Specifications	10
Important Safety Instructions	11
Legal Disclaimer	11
Notification of Compliance	12

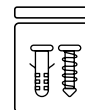
## What's in the Box



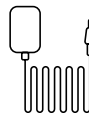
Camera



Mounting Template



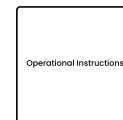
Pack of Screws



Power Adapter



Surveillance Sticker



Operational Instructions

## Device Overview

① Infrared LED

② Spotlight

③ Status LED

④ Microphone

⑤ microSD Card Cover

⑥ Reset Button

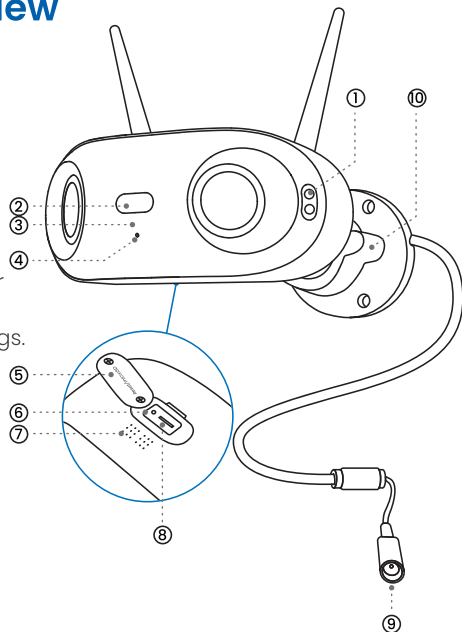
\* Hold reset button for 5 seconds, release. A short beep indicates reset to factory settings.

⑦ Speaker

⑧ microSD Card Slot

⑨ Power Port

⑩ Adjustment Knob



**NOTE:** To ensure waterproofing, tighten the cover with screws after inserting the microSD card.

LED Status	Meaning
Blinking	Wi-Fi/Network connection failed or not configured.
Solid On	Network connection succeeded

## Set up the Camera

**Before proceeding, install the antennas on the device.**

**Step 1** Scan to download the Reolink App from the App Store or Google Play store.

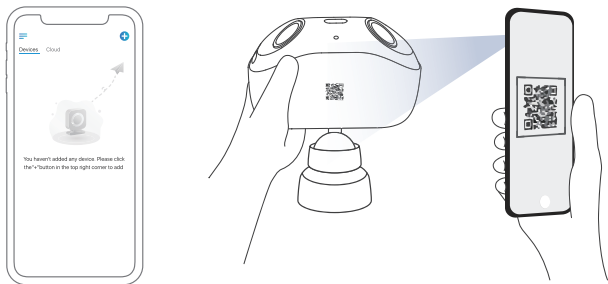


**Step 2** Plug in the adapter to power the camera.

**Step 3** Open the Reolink app, tap the '+' button, and follow the on-screen instructions to complete setup.

**NOTE:**

- This device uses Bluetooth for network pairing. Before starting, ensure your phone's Bluetooth is enabled.
- If you're using the Reolink client, click "Add Device" and enter the camera's UID, which can be found below the QR code.



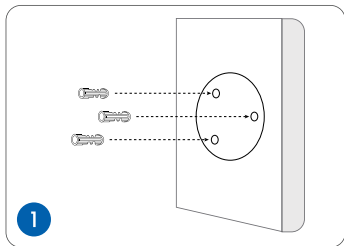
## Install the Camera

### Installation Tips

- Do not face the camera towards any light sources.
- Do not point the camera towards a glass window. Or, it may result in poor image quality because of the window glare by infrared LEDs, ambient lights or status lights.
- Do not place the camera in a shaded area and point it towards a well-lit area. Or, it may result in poor image quality. To ensure best image quality, the lighting condition for both the camera and the capture object shall be the same.
- To ensure better image quality, it's recommended to clean the lens with a soft cloth from time to time.
- Make sure the power ports are not directly exposed to water or moisture and not blocked by dirt or other elements.
- With IP waterproof ratings, the camera can work properly under conditions like rain and snow. However, it doesn't mean the camera can work underwater.
- Do not install the camera at places where rain and snow can hit the lens directly.
- The camera may work in extreme cold conditions as low as  $-25^{\circ}\text{C}$ . Because when it is powered on, the camera will produce heat. You may power on the camera indoors for a few minutes before installing it outdoors.

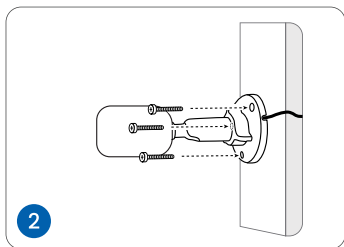
## Wall/Ceiling Mounting

**NOTE:** Before installation, ensure that the area has a strong Wi-Fi signal.



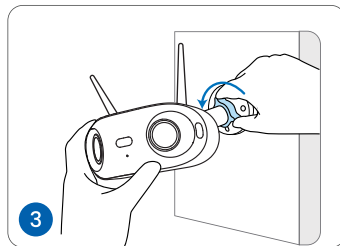
Drill holes in accordance with the mounting hole template.

**NOTE:** Use the drywall anchors included in the package if needed.

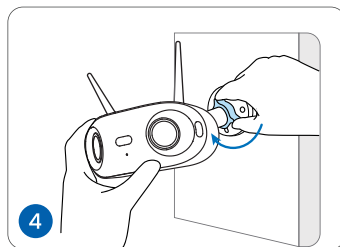


Install the mount base with the mounting screws included in the package.

**NOTE:** Run the cable through the cable notch on the mount base.

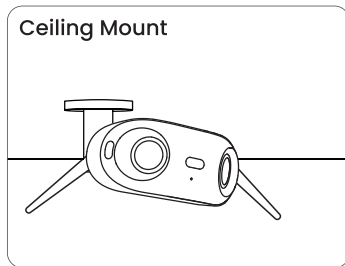
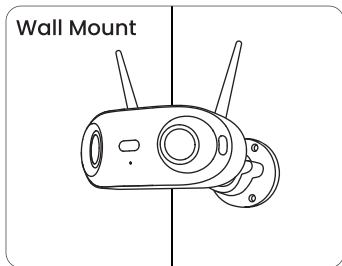


To get the best field of view, loosen the adjustment knob on security mount and turn the camera.



Stiffen the adjustment knob to lock the camera.

**NOTE:** For better waterproofing, position the camera with its microSD card slot and speaker facing downwards.



## Troubleshooting

### Camera Not Powering On

If your camera is not powering on, please try:

- Plug the camera into different outlets to see if the status LED lights up.
- Use another 12V power adapter to power on the camera.

If these steps don't work, contact Reolink Support at <https://supportreolink.com/>.

### Wi-Fi Connection Failed During Initial Setup

If the camera failed to connect to Wi-Fi during setup, please try:

- Please ensure you have entered the correct Wi-Fi password.
- Put your camera close to your router to ensure a strong Wi-Fi signal.
- Change the encryption method of the WiFi network to WPA2-PSK/WPA-PSK (safer encryption) on your router interface.
- Change your Wi-Fi SSID or password and make sure that SSID is within 31 characters and password is within 64 characters.
- Set your password using only the characters on the keyboard.

If these steps don't work, contact Reolink Support at <https://supportreolink.com/>.

## Specifications

Dimensions: 153 x 128 x 71 mm

Weight: 574 g

Operating Temperature: -10° C to 55° C (14°F to 131°F)

Operating Humidity: 10% ~ 90%

For more detailed specifications, please visit the official Reolink website at <https://reolink.com>.

# Important Safety Instructions

Please read the instructions carefully before using the device.

1. Replace only with the same or equivalent type of accessories recommended by Reolink.
2. Do not use the device in an environment that exceeds the recommended temperature range.
3. Do not use the device in an environment that exceeds the recommended humidity range.
4. Do not attempt to disassemble, repair, or alter the device by yourself.
5. Always follow the local safety laws and regulations when using the device.
6. The device contains (or comes with) small components, small plastic elements, and other small parts that may cause choking hazards. Keep the device and its accessories out of reach of children. Consult a physician immediately if small parts are swallowed.
7. The device contains (or comes with) cables or cords that may cause strangulation hazards. Keep the device and its accessories out of reach of children.

## Legal Disclaimer

To the maximum extent permitted by applicable law, this document and the product described, with its hardware, software, firmware, and services, are delivered on an “as-is” and “as-available” basis, with all faults and without warranty of any kind. Reolink disclaims all warranties, express or implied, including but not limited to, warranties of merchantability, satisfactory quality, fitness for a particular purpose, accuracy, and non-infringement of third-party rights. In no event will Reolink, its directors, officers, employees, or agents be liable to you for any special, consequential, incidental or indirect damages, including but not limited to damages for loss of business profits, business interruption, or loss of data or documentation, in connection with the use of this product, even if Reolink has been advised of the possibility of such damages.

To the extent permitted by applicable law, your use of the Reolink products and services

is at your sole risk and you assume all risks associated with internet access. Reolink does not take any responsibilities for abnormal operation, privacy leakage or other damages resulting from cyber attacks, hacker attacks, virus inspections, or other internet security risks. However, Reolink will provide timely technical support if required.

The laws and regulations related to this product vary by jurisdiction. Please check all relevant laws and regulations in your jurisdiction before using this product to ensure that your use conforms to the applicable law and regulation. During the use of the product, you must comply with relevant local laws and regulations. Reolink is not responsible for any illegal or improper use and its consequences. Reolink is not liable in the event that this product is used with illegitimate purposes, such as third-party rights infringement, medical treatment, safety equipment, or other situations where the product failure could lead to death or personal injury, or for weapons of mass destruction, chemical and biological weapons, nuclear explosion, and any unsafe nuclear energy uses or anti-humanity purposes. In the event of any conflicts between this manual and the applicable law, the latter prevails.

## Notification of Compliance

### FCC Statement

This device complies with Part 15 of the FCC Rules. Operation is subject to the following two conditions:

- (1) This device may not cause harmful interference, and
- (2) This device must accept any interference received, including interference that may cause undesired operation. Changes or modifications not expressly approved by the party responsible for compliance could void the user's authority to operate the equipment. This equipment has been tested and found to comply with the limits for a Class B digital device, pursuant to Part 15 of the FCC Rules. These limits are designed to provide reasonable protection against harmful interference in a residential installation. This equipment generates uses and can radiate radio frequency energy and, if not installed and used in accordance with the instructions, may cause harmful interference to radio

communications. However, there is no guarantee that interference will not occur in a particular installation. If this equipment does cause harmful interference to radio or television reception, which can be determined by turning the equipment off and on, the user is encouraged to try to correct the interference by one or more of the following measures:

- Reorient or relocate the receiving antenna.
- Increase the separation between the equipment and receiver.
- Connect the equipment into an outlet on a circuit different from that to which the receiver is connected.
- Consult the dealer or an experienced radio/TV technician for help.

### FCC Radiation Exposure statement

This equipment complies with FCC radiation exposure limits set forth for an uncontrolled environment. This equipment should be installed and operated with minimum distance 20cm between the radiator & your body.

### ISED Statement

This device complies with Industry Canada licence-exempt RSS standard(s). Operation is subject to the following two conditions:

- (1) this device may not cause interference, and
- (2) this device must accept any interference, including interference that may cause undesired operation of the device.

This equipment should be installed and operated with a minimum distance of 20 cm between the radiator and your body.

Le présent appareil est conforme aux CNR d'Industrie Canada applicables aux appareils radio exempts de licence. L'exploitation est autorisée aux deux conditions suivantes :

- (1) l'appareil ne doit pas produire de brouillage, et
- (2) l'utilisateur de l'appareil doit accepter tout brouillage radioélectrique subi, même si le brouillage est susceptible d'en compromettre le fonctionnement.

Cet équipement doit être installé et utilisé avec une distance minimale de 20 cm entre la source de rayonnement et votre corps.

**MODIFICATION:** Any changes or modifications not expressly approved by the grantee of this device could void the user's authority to operate the device.

**MODIFICATION :** les changements ou modifications non expressément approuvés par le fournisseur de licence de l'appareil sont susceptibles d'annuler l'autorisation accordée à l'utilisateur de se servir de l'équipement.

This Class B digital apparatus complies with Canadian ICES-003.  
Cet appareil numérique de la classe B est conforme à la norme NMB-003 du Canada.

Operation of 5150-5350 MHz is restricted to indoor use only.  
Le fonctionnement de 5150-5350 MHz est limité à une utilisation en intérieur uniquement.

## CE SIMPLIFIED EU AND UK DECLARATION OF CONFORMITY

Hereby, REOLINK INNOVATION LIMITED declares that the radio equipment type [refer to the cover of the Operational Instructions] is in compliance with Directive 2014/53/EU. The full text of the EU and UK declaration of conformity is available at the following internet address: <https://support.reolink.com/hc/en-us/articles/36788378727065/>

RF exposure information: The Maximum Permissible Exposure (MPE) level has been calculated based on a distance of 20cm between the device and the human body. To maintain compliance with RF exposure requirement, use product that maintain a 20cm distance between the device and human body.

### Wi-Fi Operating Frequency

OPERATING FREQUENCY :

2402-2480MHz RF Power:≤10dBm(EIRP)

2412-2472MHz RF Power:≤20dBm(EIRP)

5150-5250MHz RF Power:≤23dBm(EIRP)

5250-5350MHz RF Power:≤23dBm(EIRP)

5470-5725MHz RF Power:≤23dBm(EIRP)

5725-5875MHz RF Power:≤14dBm(EIRP)



The functions of Wireless Access Systems including Radio Local Area Networks (WAS/RLANs) within the band 5150-5350 MHz for this device are restricted to indoor use only within all European Union countries (BE/BG/CZ/DK/DE/EE/IE/EL/ES/FR/HR/IT/CY/LV/LT/LU/HU/MT/NL/AT/PL/PT/RO/SI/SK/FI/SE/TR/NO/CH/IS/LI/UK(NI))



### Correct Disposal of This Product

This marking indicates that this product should not be disposed with other household wastes throughout the EU. To prevent possible harm to the environment or human health from uncontrolled waste disposal, recycle it responsibly to promote the sustainable reuse of material resources. To return your used device, please use the return and collection systems or contact the retailer where the product was purchased. They can take this product for environmentally safe recycling.

### Limited Warranty

This product comes with a 2-year limited warranty that is valid only if purchased from Reolink Official Store or a Reolink authorized reseller. Learn more: <https://reolink.com/warranty-and-return/>.

**NOTE:** We hope that you enjoy the new purchase. But if you are not satisfied with the product and plan to return, we strongly suggest that you reset the camera to factory default settings and take out the inserted SD card before returning.

### Terms and Privacy

Use of the product is subject to your agreement to the Terms of Service and Privacy Policy at [reolink.com](https://reolink.com)

### Terms of Service

By using the Product Software that is embedded on the Reolink product, you agree to the terms&conditions between you and Reolink. Learn more: <https://reolink.com/terms-conditions/>

### Technical Support

If you need any technical help, please visit our official support site and contact our support team before returning the products, <https://support.reolink.com>.

### Trademarks Acknowledgement

“Reolink” and other Reolink’s trademarks and logos are the properties of Reolink. Other trademarks and logos mentioned are the properties of their respective owners.