

Technical Support

If you need any technical help, please visit our official support site and contact our support team before returning the products, <https://support.reolink.com>.

Technische Unterstützung

Wenn Sie Hilfe brauchen, kontaktieren Sie bitte Reolink Support Team zuerst, bevor Sie Ihre Bestellung zurücksenden. Meiste Fragen oder Probleme können von unserem Online Support Center beantwortet und gelöst werden:

<https://support.reolink.com>.

Support technique

Si vous avez besoin d'aide, veuillez contacter Reolink avant de retourner votre produit. La plupart des questions peuvent être répondues via notre centre de support en ligne à l'adresse <https://support.reolink.com>.

Supporto Tecnico

Se avete bisogno di aiuto, le chiediamo gentilmente di contattare Reolink prima di restituire il prodotto. La maggior parte delle domande può essere risolta tramite il nostro centro di assistenza online all'indirizzo

<https://support.reolink.com>.

Soporte técnico

Si necesita ayuda, comuníquese con Reolink antes de devolver su producto. La mayoría de las preguntas se pueden responder a través de nuestro centro de soporte en línea en <https://support.reolink.com>.



FR

Cet appareil, ses accessoires et cordons se recyclent

À DÉPOSER EN MAGASIN



OU

À DÉPOSER EN DÉCHÈTERIE



Points de collecte sur www.quefairedemesdechets.fr
Privilégiez la réparation ou le don de votre appareil !

PAP 22

Raccolta Carta

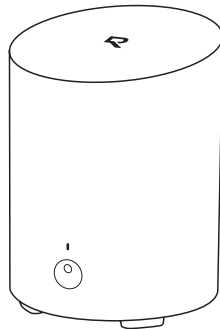
58.03.009.0052

Reolink

Item No. : Hub 1 Lite

Reolink Home Hub Mini

Operational Instructions

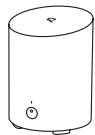


@ReolinkTech <https://reolink.com>

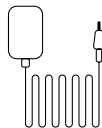
Content

01	What's in the Box	2
02	Device Overview	3
03	Connection Diagram	4
04	Access Home Hub via Smartphone	5
05	Connect Devices to Home Hub	7
06	Specifications	8
07	Important Safety Instructions	9
08	Legal Disclaimer	10
09	Notification of Compliance	12

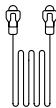
01 What's in the Box



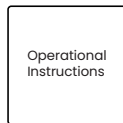
Home Hub



Power Adapter

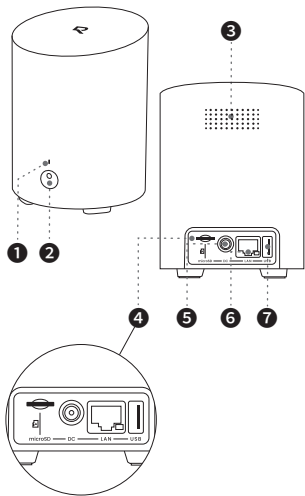


1m Ethernet
Cable



Operational
Instructions

02 Device Overview



- 1 Indicator Light
- 2 Button*
- 3 Cooling Holes
- 4 microSD Card Slot
- 5 DC Input Port
- 6 LAN Port
- 7 USB Port

Reset Note: Power off the device to reset it. While powered off, press and hold the device button, then reconnect the power until you hear a beep.

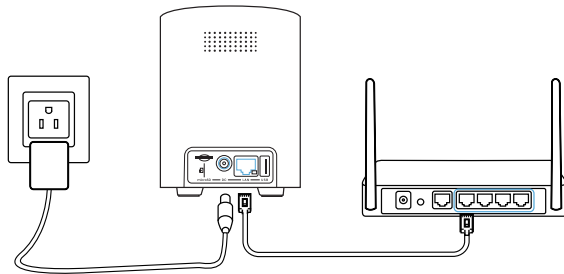
03 Connection Diagram

Step 1:

Plug in the Home Hub and connect it to your home router using the Ethernet cable provided.

Step 2:

Connect your phone to the same router that the Home Hub is connected to.



04 Access Home Hub via Smartphone

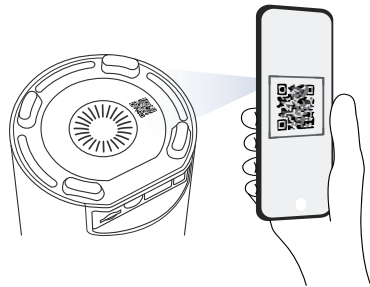
Step 1:

Scan to download the Reolink App from the App Store or Google Play store



Step 2:

Launch the App, click " + " at the top right, and scan the QR code on your Home Hub to add it.



Step 3:

Once the setup is complete, the LED indicator light will turn blue.

05 Connect Devices to Home Hub

There are two ways to add Reolink devices to your Home Hub:

1. If your device is already set up, click the “+” button at the top right and choose to “add from device list” or “add from LAN.”
2. If your device is not set up yet, click the “+” button at the top right and choose to “scan UID code.”

*You can also directly add devices to the Hub while adding devices to the app.



Attention: When inserting the SD card into the slot, make sure the side with the numbers is facing up and push it gently inward until it clicks into place.

06 Specifications

Operating Temperature: -10°C~+45°C(14°F to 113°F)

Size: $\phi 94 * 127.8$ mm

Weight: 220 g

For more specifications, please visit <https://reolink.com/>.

07 Important Safety Instructions

Please read the instructions carefully before using the device.

1. Replace only with the same or equivalent type of accessories recommended by Reolink.
2. Do not use the device in an environment that exceeds the recommended temperature range.
3. Do not use the device in an environment that exceeds the recommended humidity range.
4. Do not attempt to disassemble, repair, or alter the device by yourself.
5. Always follow the local safety laws and regulations when using the device.
6. The device contains (or comes with) small components, small plastic elements, and other small parts that may cause choking hazards. Keep the device and its accessories out of reach of children. Consult a physician immediately if small parts are swallowed.
7. The device contains (or comes with) cables or cords that may cause strangulation hazards. Keep the device and its accessories out of reach of children.

8. The product doesn't include assistive features. Customers with disabilities can use devices with assistive features, like computers or smartphones with text-to-speech tools, for accessibility. For individuals with visual or physical impairments, professional help may be needed for installation. Once installed, the product can be controlled entirely via the app.

08 Legal Disclaimer

To the maximum extent permitted by applicable law, this document and the product described, with its hardware, software, firmware, and services, are delivered on an "as-is" and "as-available" basis, with all faults and without warranty of any kind. Reolink disclaims all warranties, express or implied, including but not limited to, warranties of merchantability, satisfactory quality, fitness for a particular purpose, accuracy, and non-infringement of third-party rights. In no event will Reolink,

its directors, officers, employees, or agents be liable to you for any special, consequential, incidental or indirect damages, including but not limited to damages for loss of business profits, business interruption, or loss of data or documentation, in connection with the use of this product, even if Reolink has been advised of the possibility of such damages.

To the extent permitted by applicable law, your use of the Reolink products and services is at your sole risk and you assume all risks associated with internet access. Reolink does not take any responsibilities for abnormal operation, privacy leakage or other damages resulting from cyber attacks, hacker attacks, virus inspections, or other internet security risks. However, Reolink will provide timely technical support if required.

The laws and regulations related to this product vary by jurisdiction. Please check all relevant laws and regulations in your jurisdiction before using this product to ensure that your use conforms to the applicable law and regulation. During the use of the product, you must

comply with relevant local laws and regulations. Reolink is not responsible for any illegal or improper use and its consequences. Reolink is not liable in the event that this product is used with illegitimate purposes, such as third-party rights infringement, medical treatment, safety equipment, or other situations where the product failure could lead to death or personal injury, or for weapons of mass destruction, chemical and biological weapons, nuclear explosion, and any unsafe nuclear energy uses or anti-humanity purposes. In the event of any conflicts between this manual and the applicable law, the latter prevails.

09 Notification of Compliance

CE SIMPLIFIED EU AND UK DECLARATION OF CONFORMITY

Hereby, REOLINK INNOVATION LIMITED declares that the radio equipment type [refer to the cover of the Operational Instructions] is in compliance with

Directive 2014/53/EU. The full text of the EU and UK declaration of conformity is available at the following internet address: <https://support.reolink.com/hc/en-us/articles/36788378727065/>

RF exposure information: The Maximum Permissible Exposure (MPE) level has been calculated based on a distance of 20cm between the device and the human body. To maintain compliance with RF exposure requirement, use product that maintain a 20cm distance between the device and human body.

(a) the equipment does not have a standby mode or other equivalent state in terms of energy efficiency requirements, power management function or the ability to deactivate wireless network connections mode;

(b) the power consumption of the equipment is likely to be higher than other equipment models meeting these functional requirements.

Wi-Fi Operating Frequency

OPERATING FREQUENCY :

2412~2472MHz RF Power: ≤20dBm(EIRP)

5150~5250MHz RF Power: ≤23dBm(EIRP)

5250~5350MHz RF Power: ≤23dBm(EIRP)

5470~5725MHz RF Power: ≤23dBm(EIRP)

5725~5875MHz RF Power: ≤14dBm(EIRP)



The functions of Wireless Access Systems including Radio Local Area Networks (WAS/RLANs) within the band 5150–5350 MHz for this device are restricted to indoor use only within all European Union countries (BE/BG/CZ/DK/DE/EE/IE/EL/ES/FR/HR/IT/CY/LV/LT/LU/HU/MT/NL/AT/PL/PT/RO/SI/SK/FI/SE/TR/NO/CH/IS/LI/UK(NI))

Hereby, REOLINK INNOVATION LIMITED declares that this device is in compliance with The Product Security and Telecommunications Infrastructure (Security Requirements for Relevant Connectable Products) Regulations 2023. For the Statement of Compliance, visit the Web site: <https://reolink.com/product-compliance/>



Correct Disposal of This Product

This marking indicates that this product should not be disposed with other household wastes throughout the EU. To prevent possible harm to the environment or human health from uncontrolled waste disposal, recycle it responsibly to promote the sustainable reuse of material resources. To return your used device, please use the return and collection systems or contact the retailer where the product was purchased. They can take this product for environmentally safe recycling.

Limited Warranty

This product comes with a 2-year limited warranty that is valid only if purchased from Reolink Official Store or a Reolink authorized reseller. Learn more: <https://reolink.com/warranty-and-return/>.

NOTE: We hope that you enjoy the new purchase. But if you are not satisfied with the product and plan to return, we strongly suggest that you reset the camera to factory default settings and take out the inserted SD card before returning.

Terms and Privacy

Use of the product is subject to your agreement to the Terms of Service and Privacy Policy at reolink.com

Terms of Service

By using the Product Software that is embedded on the Reolink product, you agree to the terms&conditions between you and Reolink. Learn more: <https://reolink.com/eula/>.

Technical Support

If you need any technical help, please visit our official support site and contact our support team before returning the products, <https://support.reolink.com>.

Trademarks Acknowledgement

“Reolink” and other Reolink’s trademarks and logos are the properties of Reolink. Other trademarks and logos mentioned are the properties of their respective owners.