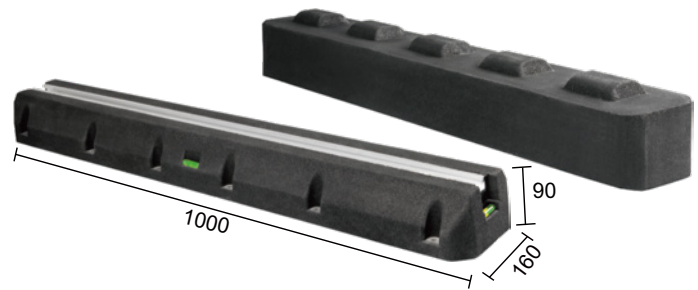
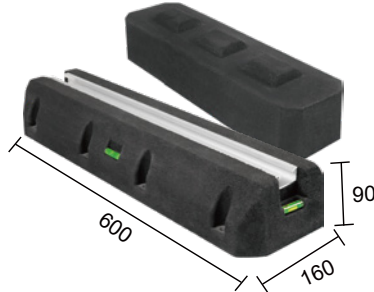
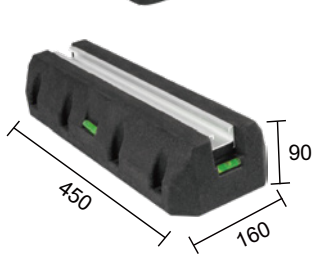


Rubber Foot Support



Can be placed on the roof or ground without damage water proof structure on the buildings. Reduce Noise UVresistant, durable recycled rubber. Corrosion resistant aluminum channel.

Length	Height	Width	Weight/set	Net weight	Max load(*)	Box size
250mm	90mm	160mm	4.5KG	4.4KG	150KG	26x33.5x10cm
400mm	90mm	160mm	7.8KG	7.6KG	300KG	41x33.5x10cm
450mm	90mm	160mm	8.5KG	8.3KG	400KG	46x33.5x10cm
600mm	90mm	160mm	11.8KG	11.5KG	500KG	61x33.5x10cm
1000mm	90mm	160mm	20KG	19.5KG	800KG	101x33.5x10cm



Big Rubber Foot

- Made of SBR rubber with steel inserts.
- Feet 200x200mm.
- Standard color: black.
- Working temperature: - 40°C to 100°C.
- Loading capacity:360KG

Small Rubber Foot

- Made of SBR rubber with steel inserts.
- Standard color: black.
- Working temperature: - 40°C to 100°C.
- Loading capacity:360KG

