



Harmony XV6

Modular tower lights
Signaling units Ø 60

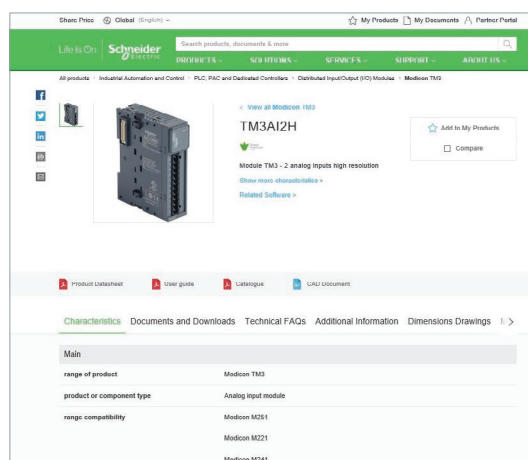
Quick access to product information

Get technical information about your product

References

Modicon TM3
I/O expansion modules for Modicon controllers
Analog I/O modules

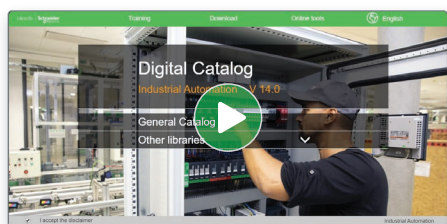
References	Input range	Resolution	Input terminal block (1) (Digital Inputs)	Reference	Weight (kg)
2 voltage/current inputs	-10...+10 VDC 0...+10 VDC 0...20 mA / 20 mA	10 000 or 10 000 + sign	0 580.2 0 580.2	TM3A12H TM3A12H	0.130 0.130
4 voltage/current inputs	-10...+10 VDC 0...+10 VDC 0...20 mA / 20 mA	12 000 or 11 000 + sign	0 580.2 3 810.15	TM3A14 TM3A14	0.130 0.200
4 voltage/current or temperature inputs (1)	Thermopile (1) (1) K, R, S, E, T, N, E, C Temperature (1) (1) Pt100, Pt1000 0...+10 VDC 0...20 mA / 20 mA	10 000 or 10 000 + sign	3 810.15 3 810.15	TM3A16 TM3A16	0.200 0.200
4 differential temperature inputs	Thermopile (1) (1) K, R, S, E, T, N, E, C 0...+10 VDC 0...20 mA / 20 mA	10 000 or 10 000 + sign	3 810.15 3 810.15	TM3A18 TM3A18	0.130 0.200
4 voltage/current	-10...+10 VDC	12 000 or 10 000	0 580.2	TM3A18 TM3A18	0.130 0.130



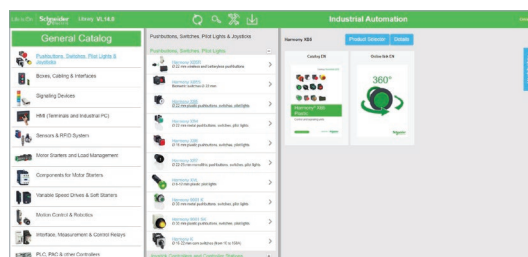
Each commercial reference presented in a catalog contains a hyperlink. Click on it to obtain the technical information of the product:

- Characteristics, Dimensions and drawings, Mounting and clearance, Connections and schemas, Performance curves
- Product image, Instruction sheet, User guide, Product certifications, End of life manual

Find your catalog



- > With just 3 clicks, you can access the Industrial Automation and Control catalogs, in both English and French
- > Consult digital automation catalogs at [Digi-Cat Online](#)

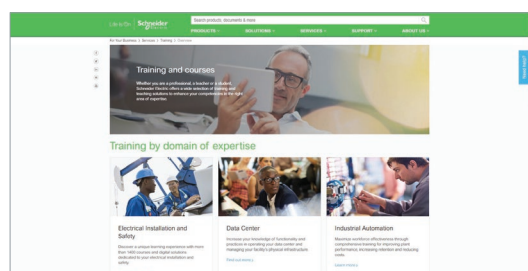


- Up-to-date catalogs
- Embedded product selectors, 360° pictures
- Optimized search by commercial references

Select your training



- > Find the right [Training](#) for your needs on our Global website
- > Locate the training center with the selector tool, using this [link](#)



Life Is On

Schneider Electric



Harmony

Discover [Harmony](#)

Advanced operator interface and industrial relays

Harmony operator interface and industrial relays enhance operational efficiency and equipment availability across industrial and building applications. **Harmony** includes intelligent connected products and edge terminals that visualize, gather and process data, enabling informed operator decisions

Explore our offer

- [Harmony](#) Push Buttons and Switches
- [Harmony](#) HMI Operator Terminals, IPC and EdgeBox
- [Harmony](#) Signaling Devices
- [Harmony](#) Electrical Relays
- [Harmony](#) Safety

Life Is 

Schneider
Electric

General contents

Harmony XV6 Ø 60 Signalling units

Selection guide	page 2
■ Presentation, selection, and description	
□ Modular tower lights for customer assembly	page 8
□ How to select your Harmony modular tower light	page 9
□ Assembly overview	page 10
■ References	
□ Base modules	page 12
□ Light modules with steady light signal	page 12
□ Light modules with blinking light signal	page 12
□ Light modules with multi-colored clear lens	page 12
□ Light modules with Flashing light signal	page 12
□ Light modules with steady light signal	page 13
□ Audible modules	page 13
□ Mounting bases and accessories	page 13
■ Product reference index	page 15

Harmony XV Pro smart tower lights Modular tower lights



Product type	Harmony XVTS Smart Tower Light	Illuminated beacons Modular tower lights for customer assembly of up to 5 units
Diameter	Ø 70 mm/2.76 in	Ø 70 mm/2.75 in.
Configuration	9/15 layer	-
Degree of protection conforming to IEC 60529	IP66/IP69K	IP65 (Mounted on mounting base XVZ●●) IP66 (Mounted on base module) IP40 (Plastic foldable bracket) IP54 (L Aluminium bracket ø25mm pole XVZ●●●)
Type of signaling	Steady Blinking Flashing High flashing "Flash" Multi-colored Sound	Yes Yes Yes - - - Yes (buzzer or editable voice)
Light sources	Incandescent bulb LED bulb Integral LED "Flash" discharge tube Halogen bulb	- LED/Multicolor, various colors configurable Energy-efficient LED - - -
Colors of illuminated units	<input type="checkbox"/> Red <input type="checkbox"/> Green <input type="checkbox"/> Blue	<input type="checkbox"/> Green <input type="checkbox"/> Red <input type="checkbox"/> Orange <input type="checkbox"/> Blue <input type="checkbox"/> White <input type="checkbox"/> Yellow
Connection	M12 IO-Link or M12 Standard IO	Push-in terminals, M12 or USB connector, depending on model
Mounting options	Base mounting	½" NPT adapter Plastic mounting base with tube L bracket aluminum tube Plastic foldable bracket Plastic wall mount bracket Side entry adapter Magnetic adapter Plastic Fixing Plate Metal Fixing Plate
Type references	XVTS	XVB7

Modular tower lights



Product type	Modular tower lights for customer assembly of up to 5 units	Modular tower lights for customer assembly of up to 5 units
Diameter	Ø 40 mm/1.57 in	Ø 60 mm/2.36 in
Configuration	-	-
Degree of protection conforming to IEC 60529	IP65 (mounted on base module)	IP65(mounted on 3-pin base) IP65(mounted on Direct base) IP65(mounted on Wall adapter) IP23(mounted on L-bracket) IP40(mounted on fordable base)
Type of signaling	Yes Yes - - - Steady/7 Color Yes (Buzzer)	Yes Yes Yes - - Steady/7 Color Yes (Buzzer or editable voice)
Light sources	- - Energy-efficient LED - - -	- - Energy-efficient LED - - -
Colors of illuminated units	<input type="checkbox"/> Green <input type="checkbox"/> Red <input type="checkbox"/> Orange <input type="checkbox"/> Blue <input type="checkbox"/> White	<input type="checkbox"/> Green <input type="checkbox"/> Red <input type="checkbox"/> Orange <input type="checkbox"/> Blue <input type="checkbox"/> White <input type="checkbox"/> Yellow
Connection	Push-in terminals	Push-in terminals, USB connector
Mounting options	½" NPT adapter Plastic mounting base with tube L bracket aluminum tube Plastic foldable bracket Plastic wall mount bracket Plastic fixing plate Metal fixing plate Side entry adapter Magnetic adapter	½" NPT adapter Plastic mounting base with tube L bracket aluminum tube Plastic foldable bracket Plastic wall mount bracket Plastic fixing plate Metal fixing plate Side entry adapter Magnetic adapter
Type references	XV4	XV6

Harmony XV **Monolithic tower lights**



Product type	Pre-assembled and pre-cabled USB tower lights	Pre-assembled/pre-cabled tower lights Modular tower lights for customer assembly of up to 4 units
Diameter	Ø 60 mm/2.36 in.	Ø 60 mm/2.36 in.
Degree of protection conforming to IEC 60529	IP54	IP53 and IP42 (base mounting) IP23 (direct aluminum tube mounting, aluminum tube mounting, and L bracket) IP53 and IP42 (aluminum tube mounting and mounting base) IP40 (aluminum tube mounting and foldable bracket)
Type of signaling	Steady Flashing High flashing Sound	Yes
Light sources	Incandescent bulb LED bulb Integral LED "Flash" discharge tube Halogen bulb	Yes
Colors of illuminated units	Multi-color LEDs (many possible combinations can be set with HMI) <input type="checkbox"/> Red <input type="checkbox"/> Orange <input type="checkbox"/> Green <input type="checkbox"/> Blue	<input type="checkbox"/> Red <input type="checkbox"/> Green <input type="checkbox"/> Orange <input type="checkbox"/> Blue
Connection	USB power cable: - 300 mm/11.81 in. for tube mounting - 400 mm/15.75 in. for direct mounting	Flying leads, length 500 to 560 mm/19.68 to 22.05 in. for tube mounting depending on model. Length 900 mm/35.43 in. for base mounting.
Mounting options	Mounting on support tube with mounting base: 4 x Ø 6 mm/0.24 in. Direct mounting on horizontal support: 3 x Ø 5 mm/0.2 in.	Base mounting: 3 x Ø 5 mm/0.2 in. Direct aluminum tube mounting: Ø 20 mm/0.79 in. Aluminum tube mounting and L bracket: 2 x Ø 9 mm/0.35 in. Aluminum tube mounting and mounting base: 4 x Ø 6 mm/0.24 in. Aluminum tube mounting and foldable bracket: 4 x Ø 6 mm/0.24 in.
Type references	XVGU	XVG

Monolithic tower lights



Product type	Pre-assembled and pre-cabled tower lights	Pre-assembled and pre-cabled tower lights	Pre-assembled and pre-cabled tower lights
Diameter	Ø 40 mm/1.58 in.	Ø 60 mm/2.36 in.	Ø 100 mm/3.94 in.
Degree of protection conforming to IEC 60529	IP54 (flat surface installation) IP23 (vertical surface installation)	IP54 (flat surface installation) IP23 (vertical surface installation)	IP54 (flat surface installation)
Type of signaling	Yes	Yes	Yes
Light sources	Yes	Yes	Yes
Colors of illuminated units	<input type="checkbox"/> Red <input type="checkbox"/> Orange <input type="checkbox"/> Green <input type="checkbox"/> Blue <input type="checkbox"/> White	<input type="checkbox"/> Red <input type="checkbox"/> Orange <input type="checkbox"/> Green <input type="checkbox"/> Blue <input type="checkbox"/> White	<input type="checkbox"/> Red <input type="checkbox"/> Orange <input type="checkbox"/> Green <input type="checkbox"/> Blue <input type="checkbox"/> White
Connection	Flying leads, length 450 mm/17.71 in. to 900 mm/35.43 in. depending on model	Flying leads, length 450 mm/17.71 in. to 850 mm/33.46 in. depending on model	Flying leads, length 500 mm/19.68 in.
Mounting options	Mounting on support tube with bracket: 2 x Ø 9 mm/0.35 in. Direct mounting on horizontal support: 3 x Ø 5 mm/0.2 in. Other mounting options with accessories	Mounting on support tube with bracket: 2 x Ø 11 mm/0.43 in. Direct mounting on horizontal support: 3 x Ø 5 mm/0.2 in. Other mounting options with accessories	Direct mounting on horizontal support: - 3 x Ø 6 mm/0.236 in. (without siren) - 3 x Ø 7 mm/0.276 in. (with siren) Other mounting options with accessories
Type references	XVC4	XVC6	XVC1

Harmony XV **Modular tower lights**



Product type	Tower lights for customer assembly of up to 5 units
Diameter	Ø 60 mm/2.36 in.
Degree of protection conforming to IEC 60529	IP65 for illuminated units IP54 for audible units IP55 for flexible mounting unit
Type of signaling	Steady Blinking Flashing High flashing "Flash" Sound
Light sources	Incandescent bulb LED bulb Integral LED "Flash" discharge tube Halogen bulb
Colors of illuminated units	<input type="checkbox"/> Green <input type="checkbox"/> Red <input type="checkbox"/> Orange <input type="checkbox"/> Blue <input type="checkbox"/> White <input type="checkbox"/> Yellow
Connection	Spring cage connection terminals
Mounting options	Mounting on support tube and adjustable support tube: 4 x Ø 6 mm/0.24 in. Flexible wall mounting: 3 x Ø 5 mm/0.2 in. Direct mounting: 2 x Ø 5 mm/0.2 in. 3 x Ø 5 mm/0.2 in. 4 x Ø 5 mm/0.2 in. Mounting on bracket: 2 x Ø 9 mm/0.35 in.
Type references	XVU

Modular tower lights **Rotating beacons** **Beacons** **Sound solutions**



Product type	Pre-assembled/pre-cabled tower lights Modular tower lights for customer assembly of up to 5 units	Pre-cabled rotating beacons Pre-cabled motor-less rotating/flashing beacons	Complete miniature beacons	Sirens and electronic alarms
Diameter	Ø 45 mm/1.77 in.	Ø 84 mm/3.31 in. to Ø 130 mm/5.12 in.	Ø 45 mm/1.77 in.	–
Degree of protection conforming to IEC 60529	IP54 in vertical position (XVM with plastic mounting base) IP42 in horizontal position (XVM with metal bracket) IP40 in other positions (all types of XVM tower lights)	Ø 84 mm/3.31 in. and Ø 106 mm/4.17 in.: IP23 (IP65 with accessory) Ø 120 mm/4.72 in.: IP23 Ø 130 mm/5.12 in.: IP66 and IP67 (depending on voltage) Ø 100 mm/3.94 in.: IP65 for upright position, IP23 for sideways and inverted positions	IP40	IP53 (sirens) IP54 (electronic alarms) IP65 (editable voice)
Type of signaling	Yes – Yes – Yes Yes	Yes Yes – – – – Yes	Yes – – – Yes	– – – – Yes (editable voice)
Light sources	Yes Yes – Yes	– Super bright – – – Yes	Yes – – Yes	– – – –
Colors of illuminated units	<input type="checkbox"/> Red <input type="checkbox"/> Green <input type="checkbox"/> Orange <input type="checkbox"/> Blue <input type="checkbox"/> White <input type="checkbox"/> Yellow	<input type="checkbox"/> Red <input type="checkbox"/> Orange <input type="checkbox"/> Green <input type="checkbox"/> Blue	<input type="checkbox"/> Green <input type="checkbox"/> Red <input type="checkbox"/> Orange <input type="checkbox"/> Blue <input type="checkbox"/> White <input type="checkbox"/> Yellow	–
Connection	Flying leads, length 300 mm/11.81 in. or screw terminals	Flying leads, length 400 mm/15.75 in. (except XVR08: 500 mm/19.68 in.)	Screw clamp terminals	Screw clamp terminals (except XVS14: flying leads, length 500 mm/19.68 in.)
Mounting options	Mounting on bracket: 2 x Ø 9 mm/0.35 in. Mounting on support tube: 4 x Ø 5.5 mm/0.22 in. or M5	Depending on model: - XVR08 (Ø 84 mm/3.31 in.): 3 x Ø 5 mm/0.2 in. - XVR10 (Ø 106 mm/4.17 in.): 3 x Ø 5 mm/0.2 in. - XVR12 (Ø 120 mm/4.72 in.): 3 x Ø 6 mm/0.24 in. - XVR13 (Ø 130 mm/5.12 in.): 3 x Ø 9 mm/0.35 in. - XVR13●●●L (Ø 130 mm/5.12 in.): 3 x Ø 7 mm/0.28 in. - XVR3 (Ø 100 mm/3.94 in.): 3 x Ø 6 mm/0.24 in.	3 x Ø 3.3 mm/0.13 in. or M3	3 x Ø 6.5 mm/0.26 in.
Type references	XVM	XVR	XVDLS	XVS

Signaling units

Modular tower lights Ø 60 mm

Harmony® XV6

Tower lights for customer assembly (up to 5 units)

Harmony XV6:

- Modular tower lights Ø 60 mm /2.36 in. for customer assembly with light and sound functions



Harmony XV6: redefining signaling excellence

Harmony XV6 modular tower lights are visual and audible signaling devices designed to indicate, in all directions and from a distance, the different machine or system states, such as start/stop, material shortage, maintenance request, or fault detection.

- > Harmony modular tower lights, **launching in 2025**, feature a sleek, new design incorporating universal LEDs to maximize brightness while minimizing energy consumption.
- > With easy installation and a modular concept, Harmony modular tower lights simplify your selection journey and enable operational efficiency.
- > These enhancements minimize the number of references that need to be stocked by end users, OEMs, and distributors, thereby optimizing supply chains and helping to ensure availability at the right place and time.

Bright, connected, and streamlined for your success!

Aesthetics & Visibility

- > Customizable with **vibrant lighting**
- > Sleek **modern design** with **light diffusion**
- > Available in both **Grey** and **White** body color

Efficient

- > Modular design now includes a simplified **USB** base option.
- > Excellent resistance to **shock and vibration**
- > **Energy-efficient LEDs** enable power optimization

Sound and Alerts

- > High-performance **buzzers with 3 variants**
- > **360°** omni-directional sound
- > Audible signal upto **95dB**

Built for Diverse environment

- > **IP65** rating across references.
- > Built to **withstand** dust, moisture, extreme temperatures, and vibrations.

Service and availability

- > Supported by Schneider Electric service centers
- > Wide availability throughout an extensive distribution network

+ Energy-efficient LEDs provide energy savings with greater brightness

Signaling units

Modular tower lights Ø 60 mm

Harmony® XV6

Tower lights for customer assembly (up to 5 units)



How to select your Harmony modular tower light

Step 1: Base module selection

- > The base module determines the voltage level of the assembled tower light.
- > Different types of voltage are available:
 - > 24VAC/DC, standard, blinking, and flashing light base.
 - > 100 - 240VAC, 120VDC, steady, blinking, and flashing light base.
 - > 5V USB base (white) – ideal for direct USB connection.
 - > Each base supports multiple adapters: wall mount, 3-pin, and direct tube.

Step 2: Lens or light module selection

- > Maximum of five layers, including the top module.
- > All light modules operate with a 24 V supply voltage.
- > The module offers color or clear lens types: 6 color lenses with steady or blinking, or flashing.
- > light patterns for diverse visual signaling, and 4 clear lenses with a steady light pattern.
- > The multi color device offers a steady pattern with 7 different color combinations (Red, Green, Yellow, Blue, Violet, Turquoise or White).

Step 3: Top module selection

- > The top module can be a sounder, or a cover (comes default with base).
- > All audible modules operate with a 24 V supply voltage.
- > Sound buzzers reach up to 95 dB with 2-tone or 8-tone patterns.

Step 4: Mounting accessory selection

- > Universal accessories, common across all diameters (40, 60, and 70 mm/1.57, 2.36, and 2.75 in.).
- > Available in various tube lengths ranging from 100 to 800 mm/3.94 to 31.5 in.
- > Includes various types of mounting options.



Choose the base module (see page 8)

Harmony XV6 Ø 60mm

XV6C 21B P W

Range name	1	2	3
1 Voltage	2 Mounting	3 Body Color	
21 B = 24V	G = Direct mount	'W' = White	
21 M = 100-240VAC 120VDC	L = Wall mount	' ' = Grey	
51 = 5V	T = Tube adapter mount		
	P = 3-pin		

Choose the light module (see page 8)

Harmony XV6 Ø 60mm

XV6C 2 3 C



Range name	1	2	3
1 Light pattern	2 Color	3 Lens type	
2 = Steady	3 = Green	'C' = Clear	
5 = Blinking	4 = Red	' ' = Colored	
6 = Flashing	5 = Orange		
	6 = Blue		
	7 = White		
	8 = Yellow		
	9 = Multi-colored		

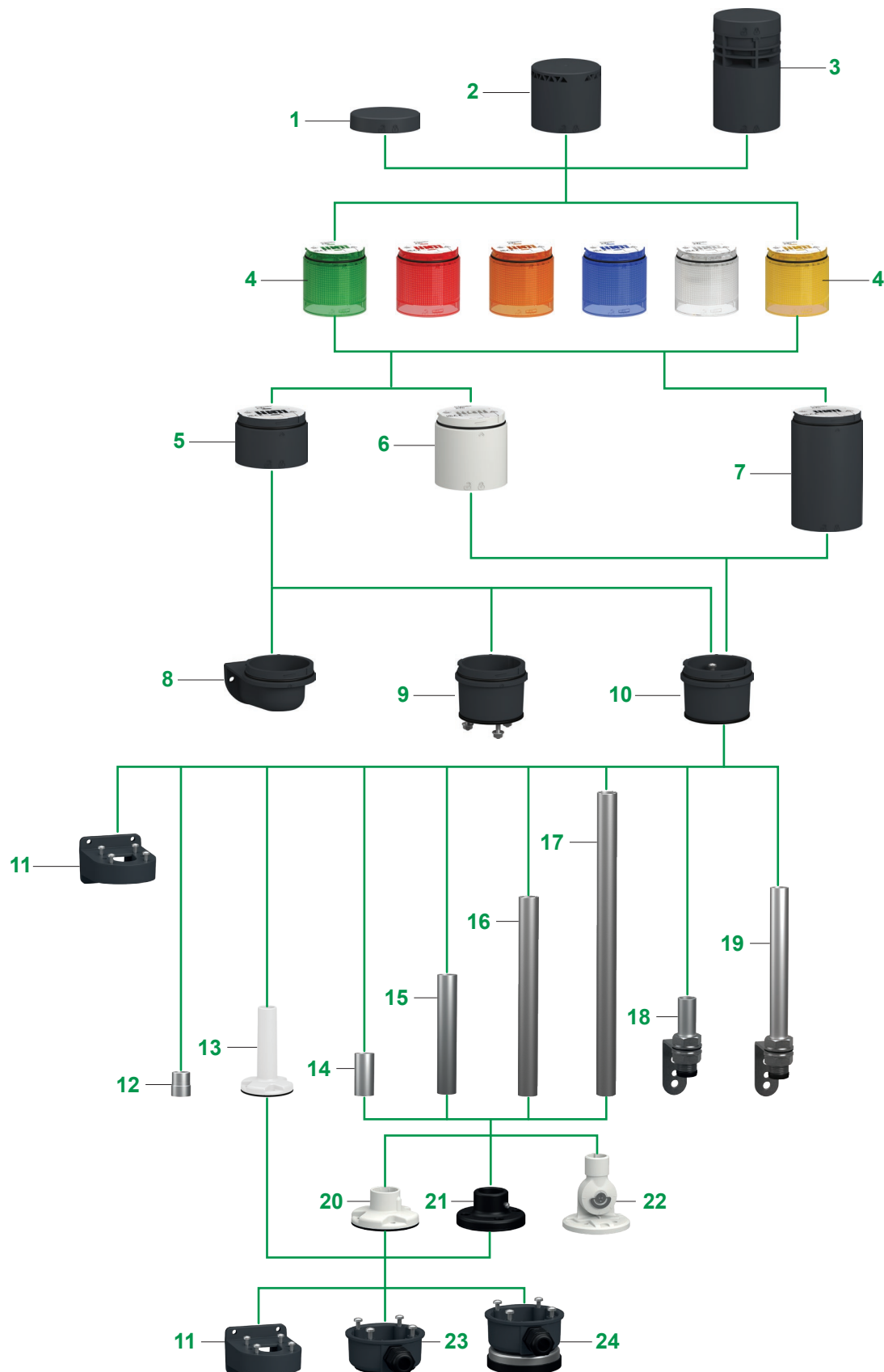
Signaling units

Modular tower lights Ø 60 mm

Harmony® XV6

Tower lights for customer assembly (up to 5 units)

Assembly overview



Signaling units

Modular tower lights Ø 60 mm

Harmony® XV6

Tower lights for customer assembly (up to 5 units)

Assembly overview

Assembly overview

Harmony XV6 tower lights for customer assembly

- Modular composition of one to five light or audible modules that are supplied as separate items for customer assembly.

Maximum configuration:

- 5 units (24 VAC/DC)
- 4 units (100 -240VAC, 120VDC)

The **Harmony XV6** range comprises:

- **8 base modules type with push-in terminals:**

- top cover **1** included, side entry adapter **24** (to be purchased separately)
- 24 V AC/DC, push-in terminals (White or Dark Grey)
- Available with 3 different default adapter types (Wall mount **8**, direct/tube adapter base 10 & 3-Pin direct mount **5,9**)
- 100...240 VAC **7** and 120 VDC, push-in terminals (Dark grey only)
- 5V USB base **6**, USB 2.0 Type C connection (White only)

- **23 colored light modules 4:**

- 6 with colored lens, steady light signal (Green, Red, Yellow, Orange, Blue, or White)
- 3 light patterns with colored lens as Steady, blinking, and flashing light (Green, Red, Yellow, Orange, Blue, or White)
- 4 with clear lens, steady light signal (Green, Red, Orange, or Blue)
- 1 multi-color lens, steady light signal (Red, Green, Yellow, Blue, Violet, Turquoise, or White)

- **6 audible modules 2&3:**

- 2-tone buzzers (White and Black)
- 8-tone buzzers (White and Black)
- Customizable vocal element (White and Black)
- A maximum of 1 sound modules **2**, for mounting on top of the bank
- Top cover **1** (provided with each base module)
- The light or audible modules stack vertically and are easily locked and unlocked using an integral clamping ring.

- Electrical connections between each unit are made automatically.

Mounting options

- Plastic wall mounting bracket **11**
- ½" NPT adapter **12**
- Plastic wall mounting bases with tube **13** Ø 25 mm/0.98 in. aluminum tubes, height 100mm **14**, 250 mm **15**, 400 mm **16**, or 800 mm **17** /3.94, 9.84, 15.75, or 31.5 in.
- L brackets for Ø 25 mm/0.98 in. aluminum tubes (height 100 mm **18** or 250mm **19** /3.94 or 9.84 in.)
- Fixing plate (plastic **20** or metal **21**)
- Plastic foldable brackets **22**
- Side cable entry adapter **23**
- Magnetic adapter **24**

Cabling

- Wiring is simplified through modular base designs, with removable push-in terminal blocks
- Electrical connection between modules is automatic via internal contact system when stacked

Signaling units

Modular tower lights Ø 60 mm

Harmony® XV6

Tower lights for customer assembly (up to 5 units)

Base & light modules



XV6C21B



XV6C21BW



XV6C21BP



XV6C21BL



XV6C21M



XV6C51W



XV6C23



XV6C24



XV6C25



XV6C26



XV6C27



XV6C28

Base modules for mounting (IP65)

Description	Voltage Connection (V)	Color	Reference	Weight kg/lb
Standard base modules with tube adapter and cover	24 ~	Grey	XV6C21B	0.101/0.22
		White	XV6C21BW	0.101/0.22
Standard base modules with wall mount adapter		Grey	XV6C21BL	0.093/0.205
		White	XV6C21BLW	0.093/0.205
Standard base modules with 3-pin adapter and cover		Grey	XV6C21BP	0.105/0.231
		White	XV6C21BPW	0.105/0.231
Standard base modules with tube adapter and cover	100 - 240 ~ 120 -	Grey	XV6C21M	0.199/0.438
USB base modules with adapter, cover, and wiring pull-out protection	5 V - Modbus protocol USB 2.0 Type C connection (cable not included)	White	XV6C51W	0.125/0.275

Light modules with steady light signal (IP65)

Description	Light source	Color	Reference	Weight kg/lb
Light modules with energy-efficient LED	LED, included 24 ~	Green	XV6C23	0.053/0.116
		Red	XV6C24	0.053/0.116
		Orange	XV6C25	0.053/0.116
		Blue	XV6C26	0.053/0.116
		White	XV6C27	0.053/0.116
		Yellow	XV6C28	0.053/0.116

Light modules with blinking light signal (IP65)

Description	Light source	Color	Reference	Weight kg/lb
Light modules with energy-efficient LED	LED, included 24 ~	Green	XV6C53	0.053/0.116
		Red	XV6C54	0.053/0.116
		Orange	XV6C55	0.053/0.116
		Blue	XV6C56	0.053/0.116
		White	XV6C57	0.053/0.116
		Yellow	XV6C58	0.053/0.116

Light modules with multi-colored lens (IP65)

Description	Light source	Lens type	Color	Reference	Weight kg/lb
Light modules with energy-efficient LED	Steady/7 color, included 24 V ~	Color lens	Red, Green, Yellow, Blue, Violet, Turquoise, or White	XV6C29	0.054/0.116

Light modules with Flashing light signal (IP65)

Description	Light source	Color	Reference	Weight kg/lb
Light modules with energy-efficient LED	LED, included 24 ~ 2 Joule flash	Green	XV6C63	0.057/0.126
		Red	XV6C64	0.057/0.126
		Orange	XV6C65	0.057/0.126
		Blue	XV6C66	0.057/0.126
		White	XV6C67	0.057/0.126
		Yellow	XV6C68	0.057/0.126

Signaling units

Modular tower lights Ø 60 mm

Harmony® XV6

Tower lights for customer assembly (up to 5 units)

Audible modules, mounting bases and accessories



XV6C23C



XV6C9S



XV6C9TW



XV6C9V



XVZ01



XVZ01W



XVZ02



XVZ02W



XVZ100



XVZ250

Light modules with steady light signal (IP65)

Description	Light source	Lens type	Color	Reference	Weight kg/lb
Light modules with energy-efficient LED	Steady/7 color included 24 V ~	Clear	Green	XV6C23C	0.053/0.116
			Red	XV6C24C	0.053/0.116
			Orange	XV6C25C	0.053/0.116
			Blue	XV6C26C	0.053/0.116

Audible modules

Description	Sound pattern	Color	Reference	Weight kg/lb
Sounder - 360° omnidirectional sound - IP65 - 73dBA-95dBA at 1 m - Voltage: 24 V ~ - DIP switch for tone and volume selection	2-tone buzzer DIP Switch for tone/loudness	Black	XV6C9S	0.052/0.114
		White	XV6C9SW	0.052/0.114
	8-tone buzzer DIP Switch for tone/loudness	Black	XV6C9T	0.055/0.121
		White	XV6C9TW	0.055/0.121
External power input to select up to 16 channels - Editable voice alarm		Black	XV6C9V	0.150/0.330
		White	XV6C9VW	0.150/0.330

Mounting bases

Mounting bases without tube

Description	Material	Color	Reference	Weight kg/lb
Mounting bases for base mounting - IP66 (metal) - IP65 (plastic) - Bottom cable entry - Gasket and screws included	Plastic	Dark gray	XVZ01	0.030/0.066
		White	XVZ01W	0.030/0.066
	Metal	Black	XVZ11	0.102/0.225

Mounting bases with tube

Description	Height mm/in.	Material	Color	Reference	Weight kg/lb
Plastic mounting bases comprising a Ø 25 mm/0.98 in. tube - IP66 - Bottom cable entry - Gasket and screws included	100/3.94	Plastic	Dark grey	XVZ02	0.045/0.099
			White	XVZ02W	0.045/0.099

Tubes

Description	Height mm/in.	Material	Color	Reference	Weight kg/lb
Aluminium tubes Ø 25 mm/0.98 in. - IP66 - Bottom cable entry	100/3.94	Aluminum	Silver	XVZ100	0.040/0.088
	250/9.84			XVZ250	0.098/0.216
	400/15.75			XVZ400	0.156/0.343
	800/31.5			XVZ800	0.311/0.685

L brackets with integrated tube

Description	Height mm/in.	Material	Color	Reference	Weight kg/lb
Steel L brackets comprising a Ø 25 mm/0.98 in. aluminum tube - IP54 (on horizontal surface) - IP23 (on vertical surface) - Bottom cable entry	250/9.84	Aluminum (tube) Steel (bracket)	Silver	XVZ250T	0.381/0.840
	100/3.98			XVZ100T	0.332/0.732

Signaling units

Modular tower lights Ø 60 mm

Harmony® XV6

Tower lights for customer assembly (up to 5 units)

Accessories



XVZ06W



XVZ09



XVZ00



XVZ07



XVZ08

Brackets

Description	Material	Color	Reference	Weight kg/lb
Foldable brackets for mounting at various angles - IP40 - Bottom cable entry - Screws included	Plastic	Dark grey	XVZ06	0.098/0.216
		White	XVZ06W	0.098/0.216
Wall mounting bracket for use on vertical support - IP66 - Gasket and screws included	Plastic	Dark grey	XVZ09	0.054/0.119

Other mounting accessories

Description	Material	Color	Reference	Weight kg/lb
1/2" NPT adapter - IP66 - Bottom cable entry	Steel	Silver	XVZ00	0.101/ 0.222
Side cable entry adapter for base mounting (M16 x 1.5 cable gland) - IP65 - Gasket and screws included	Plastic	Dark grey	XVZ07	0.049/0.108
Magnetic adapter for base mounting with side cable entry (M16 x 1.5 cable gland) - IP65 - Screws included	Plastic	Dark grey	XVZ08	0.289/0.637

X	
XV6C21B	12
XV6C21BL	12
XV6C21BLW	12
XV6C21BP	12
XV6C21BPW	12
XV6C21BW	12
XV6C21M	12
XV6C23	12
XV6C23C	13
XV6C24	12
XV6C24C	13
XV6C25	12
XV6C25C	13
XV6C26	12
XV6C26C	13
XV6C27	12
XV6C28	12
XV6C29	12
XV6C51W	12
XV6C53	12
XV6C54	12
XV6C55	12
XV6C56	12
XV6C57	12
XV6C58	12
XV6C63	12
XV6C64	12
XV6C65	12
XV6C66	12
XV6C67	12
XV6C68	12
XV6C9S	13
XV6C9SW	13
XV6C9T	13
XV6C9TW	13
XV6C9V	13
XV6C9VW	13
XVZ00	14
XVZ01	13
XVZ01W	13
XVZ02	13
XVZ02W	13
XVZ06	14
XVZ06W	14
XVZ07	14
XVZ08	14
XVZ09	14
XVZ100	13
XVZ100T	13
XVZ11	13
XVZ250	13
XVZ250T	13
XVZ400	13
XVZ800	13

Legal information

The information provided in this Catalog contains description of Schneider Electric products, solutions and services ("Offer") with technical specifications and technical characteristics of the performance of the corresponding Offer.

The content of this document is subject to revision at any time without notice due to continued progress in methodology, design and manufacturing.

To the extent permitted by applicable law, no responsibility or liability is assumed by Schneider Electric and its subsidiaries for any type of damages arising out of or in connection with (i) informational content of this Catalog not conforming with or exceeding the technical specifications, or (ii) any error contained in this Catalog, or (iii) any use, decision, act or omission made or taken on basis of or in reliance on any information contained or referred to in this Catalog.

SCHNEIDER ELECTRIC MAKES NO WARRANTY OR REPRESENTATION OF ANY KIND, WHETHER EXPRESS OR IMPLIED, AS TO WHETHER THIS CATALOG OR ANY INFORMATION CONTAINED THEREIN SUCH AS PRODUCTS AND SERVICES WILL MEET REQUIREMENTS, EXPECTATIONS OR PURPOSE OF ANY PERSON MAKING USE THEREOF.

Schneider Electric brand and any trademarks of Schneider Electric and its subsidiaries referred to in this Catalog are property of Schneider Electric or its subsidiaries. All other brands are trademarks of their respective owners.

This Catalog and its content are protected under applicable copyright laws and provided for informative use only. No part of this Catalog may be reproduced or transmitted in any form or by any means (electronic, mechanical, photocopying, recording, or otherwise), for any purpose, without the prior written permission of Schneider Electric.

Copyright, intellectual, and all other proprietary rights in the content of this Catalog (including but not limited to software, audio, video, text, and photographs) rests with Schneider Electric or its licensors. All rights in such content not expressly granted herein are reserved. No rights of any kind are licensed or assigned or shall otherwise pass to persons accessing this information.

mySchneider, your personalized digital experience

Access an all-in-one customized online experience and benefit from tailored business services, resources, and tools to efficiently support your business operations.

- **Efficiency:** In just a few clicks, find all the information and support you need to get the job done.
- **Simplicity:** Use a single login to access all business services, in one place, available 24/7. You no longer need to log in to multiple platforms.
- **Personalization:** Benefit from content, tools, and business services tailored to your activity, and customize your landing page based on your preferences.

Watch the How-to Videos



Order management

- > [Select Products and Add to Cart](#)
- > [Check for Products' Price and Availability](#)
- > [Order Products with Generic Commercial References](#)



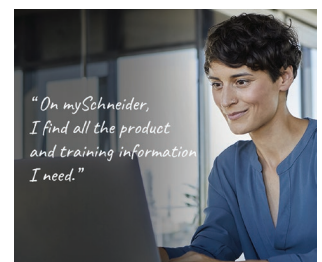
Product information

- > [Find a Product Data Sheet and Related Documents](#)
- > [Select Products and Add to Cart](#)
- > [Stay Up to Date on the Status of My Products](#)



Support

- > [Get Quicker Answers Thanks to Online Support](#)



Training

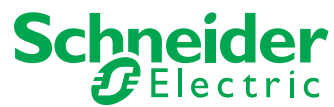
- > [Access Trainings Dedicated to My Activity](#)

[Create your account](#)

Life Is 

Schneider
Electric

Life Is On



Learn more about our products at www.se.com

Design: Schneider Electric
Photos: Schneider Electric

Schneider Electric Industries SAS

Head Office
35, rue Joseph Monier - CS 30323
F-92500 Rueil-Malmaison Cedex
France

DIA5ED2250703EN
September 2025 - V1.0