



Harmony XV4

Modular tower lights
Signaling units Ø 40

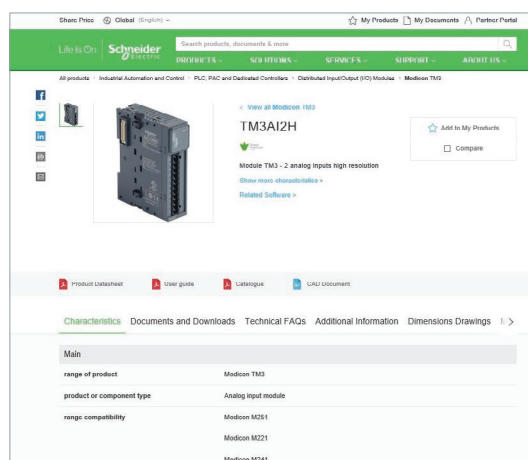
Quick access to product information

Get technical information about your product

References

Modicon TM3
I/O expansion modules for Modicon controllers
Analog I/O modules

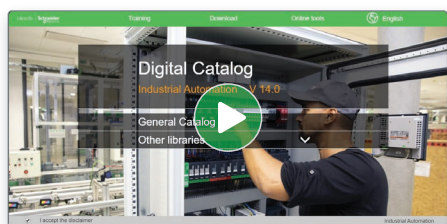
References	Input range	Resolution	Input terminal block (T)	Reference	Weight (kg)
2 voltage/current inputs	-10...+10 VDC 0...20 mA / 0...20 mA	10 000 or 10 000 + sign	0 580.2	TM3A201	0.130
	-10...+10 VDC 0...20 mA / 0...20 mA	12 000 or 11 000 + sign	0 580.2	TM3A202	0.200
4 voltage/current inputs	-10...+10 VDC 0...20 mA / 0...20 mA	12 000 or 11 000 + sign	3 510.15	TM3A401	0.200
	-10...+10 VDC 0...20 mA / 0...20 mA	12 000 or 11 000 + sign	3 510.15	TM3A402	0.200
4 voltage/current or temperature inputs (I, K, R, S, E, T, N, E, C)	Thermopile (I) Temperature (K, R, S, E, T, N, E, C)	10 000 or 10 000 + sign	3 510.15	TM3A401	0.200
	Thermopile (I) Temperature (K, R, S, E, T, N, E, C)	10 000 or 10 000 + sign	3 510.15	TM3A402	0.200
4 differential temperature inputs	Thermopile (I) Temperature (K, R, S, E, T, N, E, C)	10 000 or 10 000 + sign	3 510.15	TM3A401	0.200
	Thermopile (I) Temperature (K, R, S, E, T, N, E, C)	10 000 or 10 000 + sign	3 510.15	TM3A402	0.200
4 voltage/current	-10...+10 VDC 0...20 mA / 0...20 mA	10 000 or 10 000 + sign	3 510.15	TM3A401	0.130
	-10...+10 VDC 0...20 mA / 0...20 mA	10 000 or 10 000 + sign	3 510.15	TM3A402	0.130



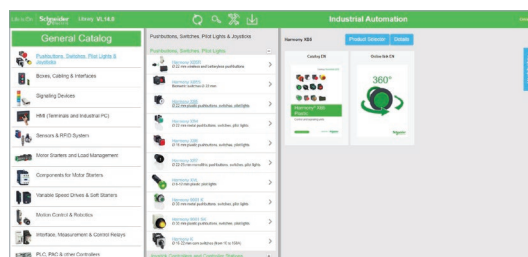
Each commercial reference presented in a catalog contains a hyperlink. Click on it to obtain the technical information of the product:

- Characteristics, Dimensions and drawings, Mounting and clearance, Connections and schemas, Performance curves
- Product image, Instruction sheet, User guide, Product certifications, End of life manual

Find your catalog



- > With just 3 clicks, you can access the Industrial Automation and Control catalogs, in both English and French
- > Consult digital automation catalogs at [Digi-Cat Online](#)

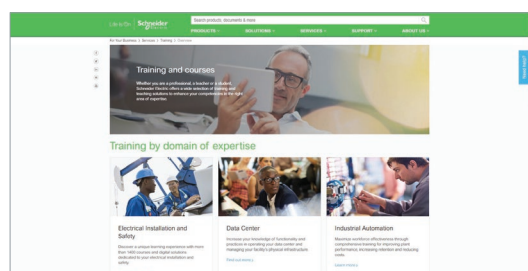


- Up-to-date catalogs
- Embedded product selectors, 360° pictures
- Optimized search by commercial references

Select your training



- > Find the right [Training](#) for your needs on our Global website
- > Locate the training center with the selector tool, using this [link](#)



Life Is On

Schneider
Electric



Harmony

Discover [Harmony](#)

Advanced operator interface and industrial relays

Harmony operator interface and industrial relays enhance operational efficiency and equipment availability across industrial and building applications. **Harmony** includes intelligent connected products and edge terminals that visualize, gather and process data, enabling informed operator decisions

Explore our offer

- [Harmony](#) Push Buttons and Switches
- [Harmony](#) HMI Operator Terminals, IPC and EdgeBox
- [Harmony](#) Signaling Devices
- [Harmony](#) Electrical Relays
- [Harmony](#) Safety

Life Is On

Schneider
Electric

General contents

Harmony XV4 Ø 40 Signalling units

Selection guide [page 2](#)

■ **Presentation, selection, and description**

□ Modular tower lights for customer assembly [page 8](#)

□ How to select your Harmony modular tower light [page 9](#)

□ Assembly overview [page 10](#)

■ **References**

□ Base modules [page 12](#)

□ Light modules with steady light signal [page 12](#)

□ Light modules with blinking light signal [page 12](#)

□ Light modules with multi-colored clear lens [page 12](#)

□ Audible modules [page 12](#)

□ Mounting bases and accessories [page 13](#)

■ **Product reference index** [page 15](#)

Harmony XV Pro smart tower lights Modular tower lights



Product type	Harmony XVTS Smart Tower Light	Illuminated beacons Modular tower lights for customer assembly of up to 5 units
Diameter	Ø 70 mm/2.76 in	Ø 70 mm/2.75 in.
Configuration	9/15 layer	-
Degree of protection conforming to IEC 60529	IP66/IP69K	IP65 (Mounted on mounting base XVZ●●) IP66 (Mounted on base module) IP40 (Plastic foldable bracket) IP54 (L Aluminium bracket ø25mm pole XVZ●●●)
Type of signaling	Steady Blinking Flashing High flashing "Flash" Multi-colored Sound	Yes Yes Yes - - - Yes (buzzer or editable voice)
Light sources	Incandescent bulb LED bulb Integral LED "Flash" discharge tube Halogen bulb	- LED/Multicolor, various colors configurable Energy-efficient LED - -
Colors of illuminated units	<input type="checkbox"/> Red <input type="checkbox"/> Green <input type="checkbox"/> Blue	<input type="checkbox"/> Green <input type="checkbox"/> Red <input type="checkbox"/> Orange <input type="checkbox"/> Blue <input type="checkbox"/> White <input type="checkbox"/> Yellow
Connection	M12 IO-Link or M12 Standard IO	Push-in terminals, M12 or USB connector, depending on model
Mounting options	Base mounting	½" NPT adapter Plastic mounting base with tube L bracket aluminum tube Plastic foldable bracket Plastic wall mount bracket Side entry adapter Magnetic adapter Plastic Fixing Plate Metal Fixing Plate
Type references	XVTS	XVB7

Modular tower lights



Product type	Modular tower lights for customer assembly of up to 5 units	Modular tower lights for customer assembly of up to 5 units
Diameter	Ø 40 mm/1.57 in	Ø 60 mm/2.36 in
Configuration	-	-
Degree of protection conforming to IEC 60529	IP65 (mounted on base module)	IP65(mounted on 3-pin base) IP65(mounted on Direct base) IP65(mounted on Wall adapter) IP23(mounted on L-bracket) IP40(mounted on fordable base)
Type of signaling	Yes Yes - - - Steady/7 Color Yes (Buzzer)	Yes Yes Yes - - Steady/7 Color Yes (Buzzer or editable voice)
Light sources	- - Energy-efficient LED - -	- - Energy-efficient LED - -
Colors of illuminated units	<input type="checkbox"/> Green <input type="checkbox"/> Red <input type="checkbox"/> Orange <input type="checkbox"/> Blue <input type="checkbox"/> White	<input type="checkbox"/> Green <input type="checkbox"/> Red <input type="checkbox"/> Orange <input type="checkbox"/> Blue <input type="checkbox"/> White <input type="checkbox"/> Yellow
Connection	Push-in terminals	Push-in terminals, USB connector
Mounting options	½" NPT adapter Plastic mounting base with tube L bracket aluminum tube Plastic foldable bracket Plastic wall mount bracket Plastic fixing plate Metal fixing plate Side entry adapter Magnetic adapter	½" NPT adapter Plastic mounting base with tube L bracket aluminum tube Plastic foldable bracket Plastic wall mount bracket Plastic fixing plate Metal fixing plate Side entry adapter Magnetic adapter
Type references	XV4	XV6

Harmony XV **Monolithic tower lights**



Product type	Pre-assembled and pre-cabled USB tower lights	Pre-assembled/pre-cabled tower lights Modular tower lights for customer assembly of up to 4 units
Diameter	Ø 60 mm/2.36 in.	Ø 60 mm/2.36 in.
Degree of protection conforming to IEC 60529	IP54	IP53 and IP42 (base mounting) IP23 (direct aluminum tube mounting, aluminum tube mounting, and L bracket) IP53 and IP42 (aluminum tube mounting and mounting base) IP40 (aluminum tube mounting and foldable bracket)
Type of signaling	Steady Flashing High flashing Sound	Yes
Light sources	Incandescent bulb LED bulb Integral LED "Flash" discharge tube Halogen bulb	Yes
Colors of illuminated units	Multi-color LEDs (many possible combinations can be set with HMI) <input type="checkbox"/> Red <input type="checkbox"/> Orange <input type="checkbox"/> Green <input type="checkbox"/> Blue	<input type="checkbox"/> Red <input type="checkbox"/> Green <input type="checkbox"/> Orange <input type="checkbox"/> Blue
Connection	USB power cable: - 300 mm/11.81 in. for tube mounting - 400 mm/15.75 in. for direct mounting	Flying leads, length 500 to 560 mm/19.68 to 22.05 in. for tube mounting depending on model. Length 900 mm/35.43 in. for base mounting.
Mounting options	Mounting on support tube with mounting base: 4 x Ø 6 mm/0.24 in. Direct mounting on horizontal support: 3 x Ø 5 mm/0.2 in.	Base mounting: 3 x Ø 5 mm/0.2 in. Direct aluminum tube mounting: Ø 20 mm/0.79 in. Aluminum tube mounting and L bracket: 2 x Ø 9 mm/0.35 in. Aluminum tube mounting and mounting base: 4 x Ø 6 mm/0.24 in. Aluminum tube mounting and foldable bracket: 4 x Ø 6 mm/0.24 in.
Type references	XVGU	XVG

Monolithic tower lights



Product type	Pre-assembled and pre-cabled tower lights	Pre-assembled and pre-cabled tower lights	Pre-assembled and pre-cabled tower lights
Diameter	Ø 40 mm/1.58 in.	Ø 60 mm/2.36 in.	Ø 100 mm/3.94 in.
Degree of protection conforming to IEC 60529	IP54 (flat surface installation) IP23 (vertical surface installation)	IP54 (flat surface installation) IP23 (vertical surface installation)	IP54 (flat surface installation)
Type of signaling	Yes Yes - With buzzer	Yes Yes - With buzzer	Yes Yes - With siren or buzzer
Light sources	- - Yes - -	- - Yes - -	- - Yes - -
Colors of illuminated units	<input type="checkbox"/> Red <input type="checkbox"/> Orange <input type="checkbox"/> Green <input type="checkbox"/> Blue <input type="checkbox"/> White	<input type="checkbox"/> Red <input type="checkbox"/> Orange <input type="checkbox"/> Green <input type="checkbox"/> Blue <input type="checkbox"/> White	<input type="checkbox"/> Red <input type="checkbox"/> Orange <input type="checkbox"/> Green <input type="checkbox"/> Blue <input type="checkbox"/> White
Connection	Flying leads, length 450 mm/17.71 in. to 900 mm/35.43 in. depending on model	Flying leads, length 450 mm/17.71 in. to 850 mm/33.46 in. depending on model	Flying leads, length 500 mm/19.68 in.
Mounting options	Mounting on support tube with bracket: 2 x Ø 9 mm/0.35 in. Direct mounting on horizontal support: 3 x Ø 5 mm/0.2 in. Other mounting options with accessories	Mounting on support tube with bracket: 2 x Ø 11 mm/0.43 in. Direct mounting on horizontal support: 3 x Ø 5 mm/0.2 in. Other mounting options with accessories	Direct mounting on horizontal support: - 3 x Ø 6 mm/0.236 in. (without siren) - 3 x Ø 7 mm/0.276 in. (with siren) Other mounting options with accessories
Type references	XVC4	XVC6	XVC1

Harmony XV **Modular tower lights**



Product type	Tower lights for customer assembly of up to 5 units												
Diameter	Ø 60 mm/2.36 in.												
Degree of protection conforming to IEC 60529	IP65 for illuminated units IP54 for audible units IP55 for flexible mounting unit												
Type of signaling	<table border="1"> <tr><td>Steady</td><td>Yes</td></tr> <tr><td>Blinking</td><td>Yes</td></tr> <tr><td>Flashing</td><td>Yes</td></tr> <tr><td>High flashing</td><td>Yes</td></tr> <tr><td>"Flash"</td><td>-</td></tr> <tr><td>Sound</td><td>Yes (buzzer or editable voice)</td></tr> </table>	Steady	Yes	Blinking	Yes	Flashing	Yes	High flashing	Yes	"Flash"	-	Sound	Yes (buzzer or editable voice)
Steady	Yes												
Blinking	Yes												
Flashing	Yes												
High flashing	Yes												
"Flash"	-												
Sound	Yes (buzzer or editable voice)												
Light sources	<table border="1"> <tr><td>Incandescent bulb</td><td>-</td></tr> <tr><td>LED bulb</td><td>-</td></tr> <tr><td>Integral LED</td><td>Yes</td></tr> <tr><td>"Flash" discharge tube</td><td>-</td></tr> <tr><td>Halogen bulb</td><td>-</td></tr> </table>	Incandescent bulb	-	LED bulb	-	Integral LED	Yes	"Flash" discharge tube	-	Halogen bulb	-		
Incandescent bulb	-												
LED bulb	-												
Integral LED	Yes												
"Flash" discharge tube	-												
Halogen bulb	-												
Colors of illuminated units	<input type="checkbox"/> Green <input type="checkbox"/> Red <input type="checkbox"/> Orange <input type="checkbox"/> Blue <input type="checkbox"/> White <input type="checkbox"/> Yellow												
Connection	Spring cage connection terminals												
Mounting options	Mounting on support tube and adjustable support tube: 4 x Ø 6 mm/0.24 in. Flexible wall mounting: 3 x Ø 5 mm/0.2 in. Direct mounting: 2 x Ø 5 mm/0.2 in. 3 x Ø 5 mm/0.2 in. 4 x Ø 5 mm/0.2 in. Mounting on bracket: 2 x Ø 9 mm/0.35 in.												
Type references	XVU												

Modular tower lights **Rotating beacons** **Beacons** **Sound solutions**



Product type	Pre-assembled/pre-cabled tower lights Modular tower lights for customer assembly of up to 5 units	Pre-cabled rotating beacons Pre-cabled motor-less rotating/flashing beacons	Complete miniature beacons	Sirens and electronic alarms																																																																												
Diameter	Ø 45 mm/1.77 in.	Ø 84 mm/3.31 in. to Ø 130 mm/5.12 in.	Ø 45 mm/1.77 in.	-																																																																												
Degree of protection conforming to IEC 60529	IP54 in vertical position (XVM with plastic mounting base) IP42 in horizontal position (XVM with metal bracket) IP40 in other positions (all types of XVM tower lights)	Ø 84 mm/3.31 in. and Ø 106 mm/4.17 in.: IP23 (IP65 with accessory) Ø 120 mm/4.72 in.: IP23 Ø 130 mm/5.12 in.: IP66 and IP67 (depending on voltage) Ø 100 mm/3.94 in.: IP65 for upright position, IP23 for sideways and inverted positions	IP40	IP53 (sirens) IP54 (electronic alarms) IP65 (editable voice)																																																																												
Type of signaling	<table border="1"> <tr><td>Yes</td><td>Yes</td></tr> <tr><td>-</td><td>Yes</td></tr> <tr><td>Yes</td><td>-</td></tr> <tr><td>-</td><td>-</td></tr> <tr><td>Yes</td><td>-</td></tr> <tr><td>Yes</td><td>Yes</td></tr> <tr><td>Yes</td><td>-</td></tr> <tr><td>Yes</td><td>Super bright</td></tr> <tr><td>-</td><td>-</td></tr> <tr><td>Yes</td><td>-</td></tr> <tr><td>-</td><td>Yes</td></tr> </table>	Yes	Yes	-	Yes	Yes	-	-	-	Yes	-	Yes	Yes	Yes	-	Yes	Super bright	-	-	Yes	-	-	Yes	<table border="1"> <tr><td>Yes</td><td>Yes</td></tr> <tr><td>-</td><td>Yes</td></tr> <tr><td>Yes</td><td>-</td></tr> <tr><td>-</td><td>-</td></tr> <tr><td>Yes</td><td>-</td></tr> <tr><td>Yes</td><td>Yes</td></tr> <tr><td>-</td><td>-</td></tr> <tr><td>-</td><td>Yes</td></tr> <tr><td>-</td><td>-</td></tr> </table>	Yes	Yes	-	Yes	Yes	-	-	-	Yes	-	Yes	Yes	-	-	-	Yes	-	-	<table border="1"> <tr><td>Yes</td><td>Yes</td></tr> <tr><td>-</td><td>-</td></tr> <tr><td>-</td><td>-</td></tr> <tr><td>-</td><td>-</td></tr> <tr><td>-</td><td>Yes</td></tr> <tr><td>-</td><td>-</td></tr> <tr><td>-</td><td>-</td></tr> <tr><td>-</td><td>Yes</td></tr> <tr><td>-</td><td>-</td></tr> </table>	Yes	Yes	-	-	-	-	-	-	-	Yes	-	-	-	-	-	Yes	-	-	<table border="1"> <tr><td>-</td><td>-</td></tr> <tr><td>-</td><td>-</td></tr> <tr><td>-</td><td>-</td></tr> <tr><td>-</td><td>-</td></tr> <tr><td>-</td><td>Yes (editable voice)</td></tr> <tr><td>-</td><td>-</td></tr> <tr><td>-</td><td>-</td></tr> <tr><td>-</td><td>-</td></tr> <tr><td>-</td><td>-</td></tr> </table>	-	-	-	-	-	-	-	-	-	Yes (editable voice)	-	-	-	-	-	-	-	-
Yes	Yes																																																																															
-	Yes																																																																															
Yes	-																																																																															
-	-																																																																															
Yes	-																																																																															
Yes	Yes																																																																															
Yes	-																																																																															
Yes	Super bright																																																																															
-	-																																																																															
Yes	-																																																																															
-	Yes																																																																															
Yes	Yes																																																																															
-	Yes																																																																															
Yes	-																																																																															
-	-																																																																															
Yes	-																																																																															
Yes	Yes																																																																															
-	-																																																																															
-	Yes																																																																															
-	-																																																																															
Yes	Yes																																																																															
-	-																																																																															
-	-																																																																															
-	-																																																																															
-	Yes																																																																															
-	-																																																																															
-	-																																																																															
-	Yes																																																																															
-	-																																																																															
-	-																																																																															
-	-																																																																															
-	-																																																																															
-	-																																																																															
-	Yes (editable voice)																																																																															
-	-																																																																															
-	-																																																																															
-	-																																																																															
-	-																																																																															
Light sources	<table border="1"> <tr><td>Yes</td><td>Yes</td></tr> <tr><td>-</td><td>-</td></tr> <tr><td>Yes</td><td>Super bright</td></tr> <tr><td>-</td><td>-</td></tr> <tr><td>Yes</td><td>-</td></tr> <tr><td>-</td><td>Yes</td></tr> </table>	Yes	Yes	-	-	Yes	Super bright	-	-	Yes	-	-	Yes	<table border="1"> <tr><td>Yes</td><td>Yes</td></tr> <tr><td>-</td><td>Yes</td></tr> <tr><td>Yes</td><td>-</td></tr> <tr><td>-</td><td>-</td></tr> <tr><td>-</td><td>Super bright</td></tr> <tr><td>-</td><td>-</td></tr> <tr><td>Yes</td><td>-</td></tr> <tr><td>-</td><td>Yes</td></tr> </table>	Yes	Yes	-	Yes	Yes	-	-	-	-	Super bright	-	-	Yes	-	-	Yes	<table border="1"> <tr><td>Yes</td><td>Yes</td></tr> <tr><td>-</td><td>-</td></tr> <tr><td>-</td><td>-</td></tr> <tr><td>-</td><td>-</td></tr> <tr><td>-</td><td>Yes</td></tr> <tr><td>-</td><td>-</td></tr> <tr><td>-</td><td>-</td></tr> <tr><td>-</td><td>Yes</td></tr> <tr><td>-</td><td>-</td></tr> </table>	Yes	Yes	-	-	-	-	-	-	-	Yes	-	-	-	-	-	Yes	-	-	<table border="1"> <tr><td>-</td><td>-</td></tr> <tr><td>-</td><td>-</td></tr> <tr><td>-</td><td>-</td></tr> <tr><td>-</td><td>-</td></tr> <tr><td>-</td><td>Yes (editable voice)</td></tr> <tr><td>-</td><td>-</td></tr> <tr><td>-</td><td>-</td></tr> <tr><td>-</td><td>-</td></tr> <tr><td>-</td><td>-</td></tr> </table>	-	-	-	-	-	-	-	-	-	Yes (editable voice)	-	-	-	-	-	-	-	-												
Yes	Yes																																																																															
-	-																																																																															
Yes	Super bright																																																																															
-	-																																																																															
Yes	-																																																																															
-	Yes																																																																															
Yes	Yes																																																																															
-	Yes																																																																															
Yes	-																																																																															
-	-																																																																															
-	Super bright																																																																															
-	-																																																																															
Yes	-																																																																															
-	Yes																																																																															
Yes	Yes																																																																															
-	-																																																																															
-	-																																																																															
-	-																																																																															
-	Yes																																																																															
-	-																																																																															
-	-																																																																															
-	Yes																																																																															
-	-																																																																															
-	-																																																																															
-	-																																																																															
-	-																																																																															
-	-																																																																															
-	Yes (editable voice)																																																																															
-	-																																																																															
-	-																																																																															
-	-																																																																															
-	-																																																																															
Colors of illuminated units	<input type="checkbox"/> Red <input type="checkbox"/> Green <input type="checkbox"/> Orange <input type="checkbox"/> Blue <input type="checkbox"/> White <input type="checkbox"/> Yellow	<input type="checkbox"/> Red <input type="checkbox"/> Orange <input type="checkbox"/> Green <input type="checkbox"/> Blue	<input type="checkbox"/> Green <input type="checkbox"/> Red <input type="checkbox"/> Orange <input type="checkbox"/> Blue <input type="checkbox"/> White <input type="checkbox"/> Yellow	-																																																																												
Connection	Flying leads, length 300 mm/11.81 in. or screw terminals	Flying leads, length 400 mm/15.75 in. (except XVR08: 500 mm/19.68 in.)	Screw clamp terminals	Screw clamp terminals (except XVS14: flying leads, length 500 mm/19.68 in.)																																																																												
Mounting options	Mounting on bracket: 2 x Ø 9 mm/0.35 in. Mounting on support tube: 4 x Ø 5.5 mm/0.22 in. or M5	Depending on model: - XVR08 (Ø 84 mm/3.31 in.): 3 x Ø 5 mm/0.2 in. - XVR10 (Ø 106 mm/4.17 in.): 3 x Ø 5 mm/0.2 in. - XVR12 (Ø 120 mm/4.72 in.): 3 x Ø 6 mm/0.24 in. - XVR13 (Ø 130 mm/5.12 in.): 3 x Ø 9 mm/0.35 in. - XVR13●●●L (Ø 130 mm/5.12 in.): 3 x Ø 7 mm/0.28 in. - XVR3 (Ø 100 mm/3.94 in.): 3 x Ø 6 mm/0.24 in.	3 x Ø 3.3 mm/0.13 in. or M3	3 x Ø 6.5 mm/0.26 in.																																																																												
Type references	XVM	XVR	XVDLS	XVS																																																																												

Signaling units

Modular tower lights Ø 40 mm

Harmony® XV4

Tower lights for customer assembly (up to 5 units)

Harmony XV4:

- Modular tower lights Ø 40 mm /1.57 in. for customer assembly with light and sound functions.



Harmony XV4: redefining signaling excellence

Harmony XV4 modular tower lights are visual and audible signaling devices designed to indicate, in all directions and from a distance, the different machine or system states, such as start/stop, material shortage, maintenance request, or fault detection.

- > Harmony XV4 modular tower lights, **launching in 2025**, feature a sleek, new design incorporating universal LEDs to maximize brightness while minimizing energy consumption.
- > With easy installation and a modular concept, Harmony modular tower lights simplify your selection journey and enable operational efficiency.
- > These enhancements minimize the number of references that need to be stocked by end users, OEMs, and distributors, thereby optimizing supply chains and helping to ensure availability at the right place and time.

Bright, connected, and streamlined for your success!

Aesthetics & Visibility

- > Customizable, **vibrant lighting**
- > Sleek **modern design** with light diffusion
- > Available in **white body**

Efficient

- > More **rationalized construction** reduces SKUs by a third while maintaining the same functional coverage (1)
- > **Energy-efficient LEDs** enable power optimization

Sound and Alerts

- > High-performance **buzzers**
- > **360°** omni-directional sound
- > Audible signal upto **95 dB**

Durability & Certification

- > **IP65**-rated durability
- > **Shock** and **vibration** resistant
- > **UL certified**

Service and availability

- > Supported by Schneider Electric service centers
- > Wide availability throughout an extensive distribution network

(1) SKUs: Stock-Keeping Units

+ Energy-efficient LEDs provide energy savings with greater brightness

Signaling units

Modular tower lights Ø 40 mm

Harmony® XV4

Tower lights for customer assembly (up to 5 units)



How to select your Harmony modular tower light

Step 1: Base module selection

- > The base module determines the voltage level of the assembled tower light
- > Different types of voltage are available:
 - > 24VAC/DC, standard & blinking base
 - > 100 -240VAC, 120VDC, standard and blinking base

Step 2: Lens or light module selection

- > Maximum of five layers, including the sounder module
- > All light modules operate with a 24 V supply voltage
- > The module offers color or clear lens types: 5 color lenses with steady or blinking light patterns for diverse visual signaling, and 4 clear lenses with a steady light pattern.
- > The multi-function device offers steady pattern with 7 different color combination (Red, Green, Yellow, Blue, Violet, Turquoise or White)

Step 3: Top module selection

- > The top module can be a sounder, or a cover(comes default with base).
- > All audible modules operate with a 24 V supply voltage.
- > Sound buzzers reach up to 95 dB with 2-tone or 8-tone patterns.

Step 4: Mounting accessory selection

- > Universal accessories are common across all diameters (40, 60, and 70 mm/1.57, 2.36, and 2.75 in.)
- > Available in various tube lengths ranging from 100 to 800 mm/3.94 to 31.5 in.
- > Includes various types of mounting options

Choose the base module (see page 12)

Harmony XV4 Ø 40mm

XV4C 21B G

Range name

1

2

1 Voltage

21 B = 24V
21 M = 100 - 240VAC,
120VDC

2 Mounting

G = Direct mount
L = Wall mount
T = Tube adapter mount
P = 3-pin



Choose the light module (see page 12)

Harmony XV4 Ø 40mm

XV4C 2 3 C

Range name

1

2

3

1 Light pattern

2 = Steady
5 = Blinking

2 Color

3 = Green
4 = Red
5 = Orange
6 = Blue
7 = White
9 = Multi-colored

3 Lens type

'C' = Clear
' ' = Colored



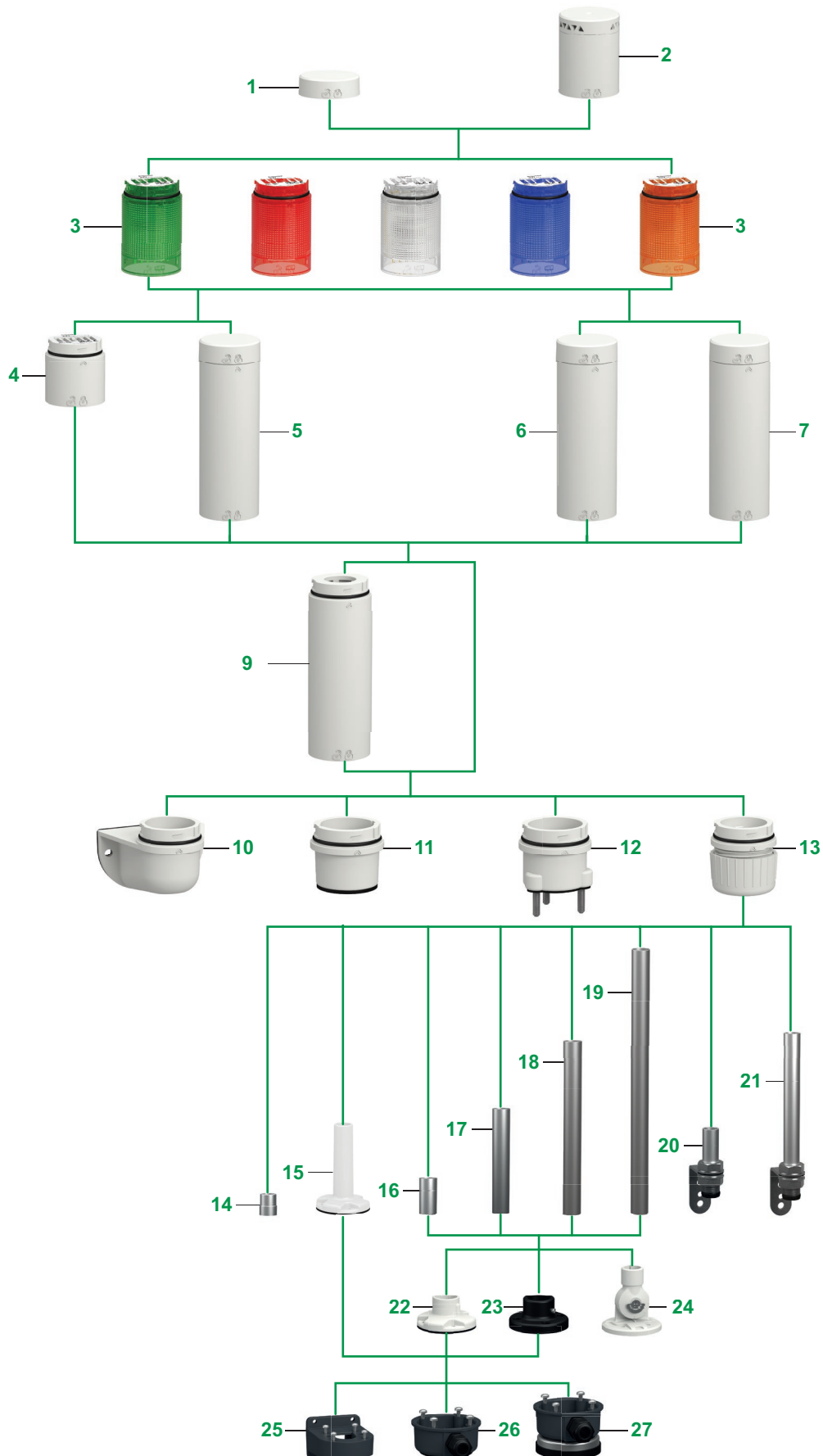
Signaling units

Modular tower lights Ø 40 mm

Harmony® XV4

Tower lights for customer assembly (up to 5 units)

Assembly overview



Signaling units

Modular tower lights Ø 40 mm

Harmony® XV4

Tower lights for customer assembly (up to 5 units)

Assembly overview

Assembly overview

Harmony XV4 tower lights for customer assembly

Modular composition of one to five light or audible modules that are supplied as separate items for customer assembly.

■ Maximum configuration:

- 5 units (24 VAC/DC)
- 4 units (100 - 240VAC, 120VDC)

The **Harmony XV4** range comprises:

■ 7 base modules type with push-in terminals 5, 6 & 7

(top cover 1 included side cable entry adapter 26 & 27 can be purchased separately)

- 24 VAC/DC, push-in terminals (White only)
- Available with 4 different default adapter type (Wall Mount, direct base, tube adapter mounting & 3-Pin direct mount)
- 24 V AC/DC blinking base, push-in terminals (White only)
- 100...240 VAC and 120 VDC, push-in terminals (White only)
- 100...240 VAC and 120 VDC blinking base, push-in terminals (White only)
- The blinking base extends the standard base with an extra channel to switch between steady and blinking modes when used with a steady lens.

■ 21 Colored Light Modules 3

- 5 with color lens, steady light signal (green, red, orange, blue, or white)
- 5 with color lens, blinking light signal (green, red, orange, blue, or white)
- 4 with clear lens, steady light signal (green, red, orange, or blue)
- 1 multi color lens, steady light signal (red, green, yellow, blue, violet, turquoise or white)

■ 2 Audible Modules 2

- 2-tone buzzers (white only)
- 8-tone buzzers (white only)
- A maximum of 1 sound module 2, for mounting on top of the bank
- Top cover 1 (provided with each base module)
- The light or audible modules stack vertically and are easily locked and unlocked using an integral clamping ring.
- Electrical connections between each unit are made automatically.

Mounting options

- ½" NPT adapter 14
- Plastic wall mounting bases with tube 15 Ø 25 mm/0.98 in. aluminum tubes, height 100, 16 250, 17 400, 18 or 800 19 mm/3.94, 9.84, 15.75, or 31.5 in.
- L brackets for Ø 25 mm/0.98 in. aluminum tubes (height 100 20 or 250 21 mm/3.94 or 9.84 in.)
- Fixing plate (plastic 22 or metal 23)
- Plastic foldable brackets 24
- Plastic wall mounting bracket 25
- Side cable entry adapter 26
- Magnetic adapter 27

Cabling

By means of removable push-in terminal block incorporated in base module (simplified wiring).

Signaling units

Modular tower lights Ø 40 mm

Harmony® XV4

Tower lights for customer assembly (up to 5 units)

Base & light modules, Audible modules



XV4C21MFX



XV4C21BT



XV4C21BL



XV4C21BP



XV4C23



XV4C24



XV4C25



XV4C26



XV4C27



XV4C9S



XV4C9T

Base modules for mounting (IP65)

Description	Voltage connection (V)	Color	Reference	Weight kg/lb
Standard base modules with tube adapter and cover	24 ~	White	XV4C21BT	0.059/0.130
	100 - 240 ~ and 120 ---		XV4C21MX (1)	0.125/0.276
Standard base modules with base and cover	24 ~		XV4C21BG	0.05/0.110
Standard base modules with wall mount adapter and cover	24 ~		XV4C21BL	0.062/0.136
Standard base modules with base, 3-pin adapter, and cover	24 ~		XV4C21BP	0.06/0.132

Base modules with blinking for mounting (IP65)

Description	Voltage connection (V)	Color	Reference	Weight kg/lb
Standard base modules with tube adapter and cover	24 ~	White	XV4C21BFX (1) (2)	0.081/0.178
	100 - 240 ~ and 120 ---		XV4C21MFX (1) (2)	0.125/0.276

Light modules with steady light signal (IP65)

Description	Light source	Lens type	Color	Reference	Weight kg/lb
Light modules with energy-efficient LED	LED, included 24 V ~	Color lens	Green	XV4C23	0.035/0.077
			Red	XV4C24	0.035/0.077
			Orange	XV4C25	0.035/0.077
			Blue	XV4C26	0.035/0.077
			White	XV4C27	0.035/0.077
		Clear lens	Green	XV4C23C	0.035/0.077
			Red	XV4C24C	0.035/0.077
			Orange	XV4C25C	0.035/0.077
			Blue	XV4C26C	0.035/0.077

Light modules with blinking light signal (IP65)

Description	Light source	Lens type	Color	Reference	Weight kg/lb
Light modules with energy-efficient LED	LED, include 24 V ~	Color lens	Green	XV4C53	0.035/0.077
			Red	XV4C54	0.035/0.077
			Orange	XV4C55	0.035/0.077
			Blue	XV4C56	0.035/0.077
			White	XV4C57	0.035/0.077

Light modules with multi-colored lens (IP65)

Description	Light source	Lens type	Color	Reference	Weight kg/lb
Light modules with energy-efficient LED	Steady/7 color, included 24 V ~	Color lens	Red, Green, Yellow, Blue, Violet, Turquoise, or White	XV4C29	0.035/0.077

Audible modules

Description	Sound pattern	Color	Reference	Weight kg/lb
Sounder - 360° omnidirectional sound - IP65 - 85 dBA to 95 dBA at 1 m - Voltage: 24 V ~ - DIP switch for tone and volume selection	2-tone buzzer	White	XV4C9S	0.032/0.070
	8-tone buzzer	White	XV4C9T	0.034/0.074

Note : (1) References XV4C21MX, XV4C21BFX and XV4C21MFX are supplied without a default adapter. It should be purchased separately from the compatible mounting bases (XV4C010, XV4C020, XV4C030, XV4C040, XV4CT00) see page - 13

(2) The blinking base includes an additional control wire that enables switching between steady and blinking light modes during operation

Signaling units

Modular tower lights Ø 40 mm

Harmony® XV4

Tower lights for customer assembly (up to 5 units)

Mounting bases and accessories



XV4C010



XV4C040



XV4C020



XV4C030



XV4C030



XVZ02W



XVZ09



XVZ01W



XVZ06W



XVZ100



XVZ250

Mounting bases

Mounting bases with base adapter

Description	Material	Color	Reference	Weight kg/lb
Direct mount adapter - IP65 - Bottom cable entry	Plastic	White	XV4C010	0.017/0.037
Wall mount to base adapter - IP65 - Side cable entry			XV4C040	0.029/0.063
Tube adapter - IP65 - Bottom cable entry			XV4C020	0.027/0.059
Direct mount 3-pin adapter - IP65 - Bottom cable entry			XV4C030	0.027/0.059

Mounting bases with body extender

Description	Material	Color	Reference	Weight kg/lb
Body extender - IP65 - Bottom cable entry	Plastic	White	XV4CT00	0.052/0.114

Mounting bases without tube

Description	Material	Color	Reference	Weight kg/lb
Mounting bases for base mounting - IP65 (plastic) - IP66 (metal) - Bottom cable entry - Gasket and screws included	Plastic	White	XVZ01W	0.030/0.066
	Metal	Black	XVZ11	0.102/0.225

Tubes

Description	Height mm/in.	Material	Color	Reference	Weight kg/lb
Aluminum tubes comprising Ø 25 mm/0.98 in. - IP66 - Bottom cable entry	100/3.94	Aluminum	Silver	XVZ100	0.040/0.088
	250/9.84			XVZ250	0.098/0.216
	400/15.75			XVZ400	0.156/ 0.343
	800/31.5			XVZ800	0.311/ 0.685
Plastic fixing plate comprising a Ø 25 mm/0.98 in. tube - IP66 - Bottom cable entry - Gasket included	130/5.11	Plastic	White	XVZ02W	0.030/0.066

L brackets with integrated tube

Description	Height mm/in.	Material	Color	Reference	Weight kg/lb
Steel L brackets comprising a Ø 25 mm/0.98 in. aluminum tube - IP54 (on horizontal surface) - IP23 (on vertical surface) - Bottom cable entry	100/3.98	Aluminum (tube) Steel (bracket)	Silver	XVZ100T	0.332/0.732
	250/9.84			XVZ250T	0.381/0.840

Signaling units

Modular tower lights Ø 40 mm

Harmony® XV4

Tower lights for customer assembly (up to 5 units)

Mounting bases and accessories



XVZ06W



XVZ09



XVZ00



XVZ07



XVZ08

Brackets

Description	Material	Color	Reference	Weight kg/lb
Foldable brackets for mounting at various angles - IP40 - Bottom cable entry - Screws included	Plastic	Dark grey	XVZ06	0.098/0.216
		White	XVZ06W	0.098/0.216
Wall mounting bracket for use on vertical support - IP66 - Gasket and screws included	Plastic	Dark grey	XVZ09	0.054/0.119

Other mounting accessories

Description	Material	Color	Reference	Weight kg/lb
1/2" NPT adapter - IP66 - Bottom cable entry	Steel	Silver	XVZ00	0.101/ 0.222
Side cable entry adapter for base mounting (M16 x 1.5 cable gland) - IP65 - Gasket and screws included	Plastic	Dark grey	XVZ07	0.049/0.108
Magnetic adapter for base mounting with side cable entry (M16 x 1.5 cable gland) - IP65 - Screws included	Plastic	Dark grey	XVZ08	0.289/0.637

X	
XV4C010	13
XV4C020	13
XV4C030	13
XV4C040	13
XV4C21BFX	12
XV4C21BG	12
XV4C21BL	12
XV4C21BP	12
XV4C21BT	12
XV4C21MFX	12
XV4C21MX	12
XV4C23	12
XV4C23C	12
XV4C24	12
XV4C24C	12
XV4C25	12
XV4C25C	12
XV4C26	12
XV4C26C	12
XV4C27	12
XV4C29	12
XV4C53	12
XV4C54	12
XV4C55	12
XV4C56	12
XV4C57	12
XV4C9S	12
XV4C9T	12
XV4CT00	13
XVZ00	14
XVZ01W	13
XVZ02W	13
XVZ06	14
XVZ06W	14
XVZ07	14
XVZ08	14
XVZ09	14
XVZ100	13
XVZ100T	13
XVZ11	13
XVZ250	13
XVZ250T	13
XVZ400	13
XVZ800	13

Legal information

The information provided in this Catalog contains description of Schneider Electric products, solutions and services ("Offer") with technical specifications and technical characteristics of the performance of the corresponding Offer.

The content of this document is subject to revision at any time without notice due to continued progress in methodology, design and manufacturing.

To the extent permitted by applicable law, no responsibility or liability is assumed by Schneider Electric and its subsidiaries for any type of damages arising out of or in connection with (i) informational content of this Catalog not conforming with or exceeding the technical specifications, or (ii) any error contained in this Catalog, or (iii) any use, decision, act or omission made or taken on basis of or in reliance on any information contained or referred to in this Catalog.

SCHNEIDER ELECTRIC MAKES NO WARRANTY OR REPRESENTATION OF ANY KIND, WHETHER EXPRESS OR IMPLIED, AS TO WHETHER THIS CATALOG OR ANY INFORMATION CONTAINED THEREIN SUCH AS PRODUCTS AND SERVICES WILL MEET REQUIREMENTS, EXPECTATIONS OR PURPOSE OF ANY PERSON MAKING USE THEREOF.

Schneider Electric brand and any trademarks of Schneider Electric and its subsidiaries referred to in this Catalog are property of Schneider Electric or its subsidiaries. All other brands are trademarks of their respective owners.

This Catalog and its content are protected under applicable copyright laws and provided for informative use only. No part of this Catalog may be reproduced or transmitted in any form or by any means (electronic, mechanical, photocopying, recording, or otherwise), for any purpose, without the prior written permission of Schneider Electric.

Copyright, intellectual, and all other proprietary rights in the content of this Catalog (including but not limited to software, audio, video, text, and photographs) rests with Schneider Electric or its licensors. All rights in such content not expressly granted herein are reserved. No rights of any kind are licensed or assigned or shall otherwise pass to persons accessing this information.

mySchneider, your personalized digital experience

Access an all-in-one customized online experience and benefit from tailored business services, resources, and tools to efficiently support your business operations.

- **Efficiency:** In just a few clicks, find all the information and support you need to get the job done.
- **Simplicity:** Use a single login to access all business services, in one place, available 24/7. You no longer need to log in to multiple platforms.
- **Personalization:** Benefit from content, tools, and business services tailored to your activity, and customize your landing page based on your preferences.

Watch the How-to Videos



Order management

- > [Select Products and Add to Cart](#)
- > [Check for Products' Price and Availability](#)
- > [Order Products with Generic Commercial References](#)



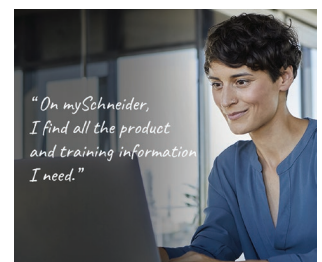
Product information

- > [Find a Product Data Sheet and Related Documents](#)
- > [Select Products and Add to Cart](#)
- > [Stay Up to Date on the Status of My Products](#)



Support

- > [Get Quicker Answers Thanks to Online Support](#)



Training

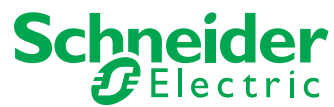
- > [Access Trainings Dedicated to My Activity](#)

[Create your account](#)

Life Is 

Schneider
Electric

Life Is On



Learn more about our products at www.se.com

Design: Schneider Electric
Photos: Schneider Electric

Schneider Electric Industries SAS

Head Office
35, rue Joseph Monier - CS 30323
F-92500 Rueil-Malmaison Cedex
France

DIA5ED2250702EN
September 2025 - V1.0