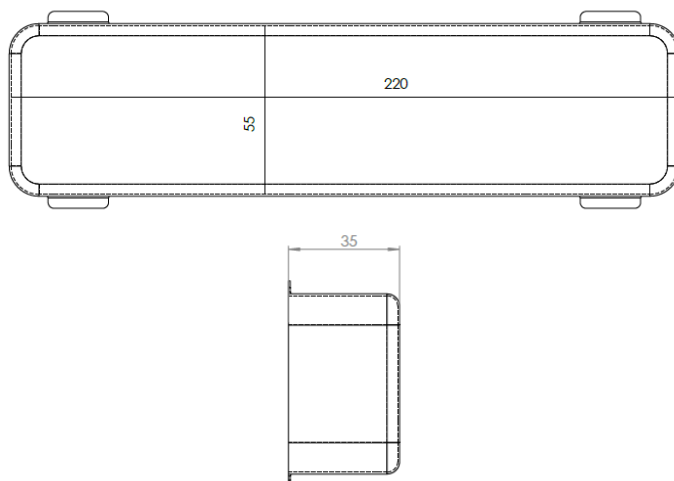


QUADRODEC®

Quadrodec® End Cap 220X55mm

Order code: **QDEC220X55**



Description

Rectangular end cap to be used on our unique **DEC-SAFEFIX** connector **QDCMM220X55**.

Connection: Female
Material 0,6mm: DX53D, Zinc plated 275g/m²
EN ISO 9227:2006

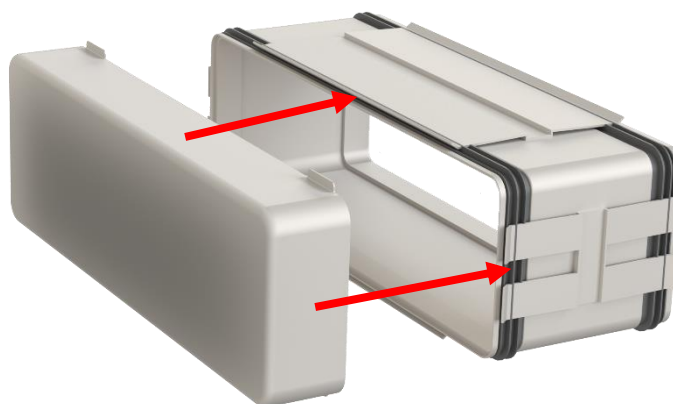
ID A	ID B	C
mm	mm	mm
220	55	35
±0,5	±0,5	

Classification

EN 13501-1:2018: Class A1 as part of the Quadrodec rectangular system.
EN 1507: Leakage Class D/(ATC2)

The product with article code **QDEC220X55** is class 1 of fire reaction only when used in combination with a system created (according to instructions).

Also available in 250X80mm.



Quadrodec® End Cap QDEC220X55

DEC-SAFEFIX - QDCMM220X55

Add by finger tip some Vaseline to the EPDM gasket of the Connector for easy mounting of the end cap.



LIABILITY:

The information contained in this brochure was current on the publication date. DEC INTERNATIONAL reserves the right to make changes in details at any time without prior notice. In order to avoid misunderstandings, any interested party is advised to contact DEC INTERNATIONAL checking for any changes in materials and/or information after this brochure was published.

PLEASE NOTICE:

The consultant is responsible for the actual installation and mounting of the product. The mentioned values with respect to temperatures are not appropriate to be used to determine the physical properties. These properties are also dependent on humidity and the temperature of the air inside and outside of the H.V.A.C. system.

TRADEMARKS:

QUADRODEC, the DEC logo and DEC International are trademarks or registered trademarks of Dutch Environment Corporation BV in the Netherlands and/or other countries.

RESTRICTIONS:

The QUADRODEC ducts are not suitable for discharging combustion products from open fireplaces and oil-fired boilers. Neither are the ducts suitable for transporting air with a high concentration of acid and base.