



GELSNAP

Splice Closure for Unpressurized Telephone Networks

Features

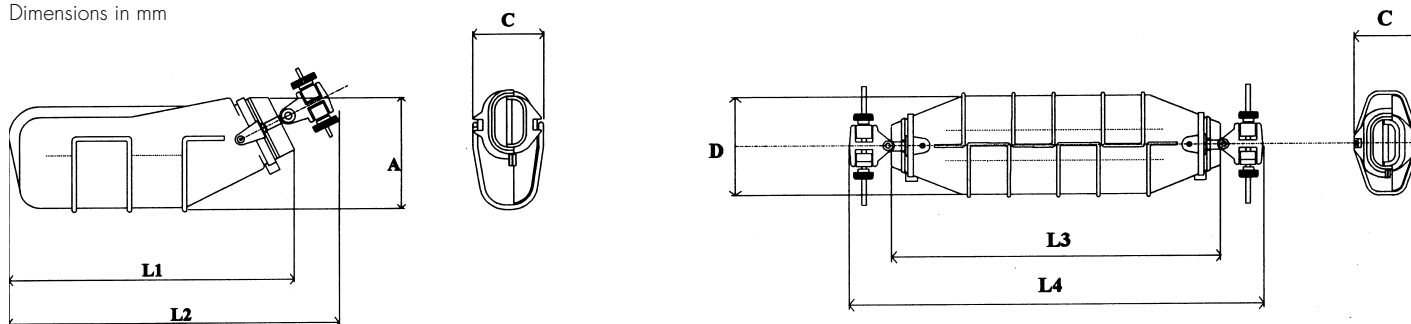
- Prevents water ingress by use of non-flowing gel under permanent compression
- Three sizes are available accommodating joints up to 30 pairs
- Quick, easy to use
- No special tools required to install
- Robust and reliable under a wide variety of environmental conditions
- Many connector types can be accommodated
- Butt, in-line, and branch configurations are possible
- Easy, clean re-entry

GELSNAP

Splice Closure for Unpressurized Telephone Networks

Sizing/Ordering Information

Dimensions in mm



Raychem Description	Max Cable Ø	Min Cable Ø	Max Splice Opening	Max Splice Capacity	Splice Type	Branching
Gelsnap-A-10/5-80	10	5	80	3 pairs	Butt	Max 2 Cables
Gelsnap-B-14/5-130	14	5	130	10 pairs	Butt In-line	Max 2 Cables at each end
Gelsnap-C-18/5-180	18	5	180	30 pairs	Butt In-line	Max 2 Cables at each end

Closure Dimensions

Dimensions in mm

Raychem Description	L1	L2	L3	L4	A	C	D
Gelsnap-A-10/5-80	130	155	-	-	64	33	-
Gelsnap-B-14/5-130	-	-	225	290	-	33	80
Gelsnap-C-18/5-180	-	-	270	335	-	33	80

Kit Content

The Gelsnap Closure Kit Contains

- Two gel filled half shells
- Gel compression springs
- Tie wraps to confine the gel at each end of the closure
- Strain relief accessories
- Installation instruction



www.commscope.com

Visit our website or contact your local CommScope representative for more information.

© 2016 CommScope, Inc. All rights reserved.

GELSNAP and all trademarks identified by ® or ™ are registered trademarks or trademarks, respectively, of CommScope, Inc.

This document is for planning purposes only and is not intended to modify or supplement any specifications or warranties relating to CommScope products or services.

PS-322451-AE (01/16) TC 256/DS/5 05/97