



# **TECHNICAL DATA AND INSTALLATION GUIDE**

**ONE – Outdoor wall grill  
with rubber gasket**



# ONE – OUTDOOR WALL GRILL WITH RUBBER GASKET

- Outdoor wall grill with rubber gasket, standard powder coated black (RAL 9005), white (RAL 9003), red (RAL 8004) and red (RAL 3009)
- It is possible to choose any RAL color. MOQ will apply.
- Material: galvanizing steel, powder coated

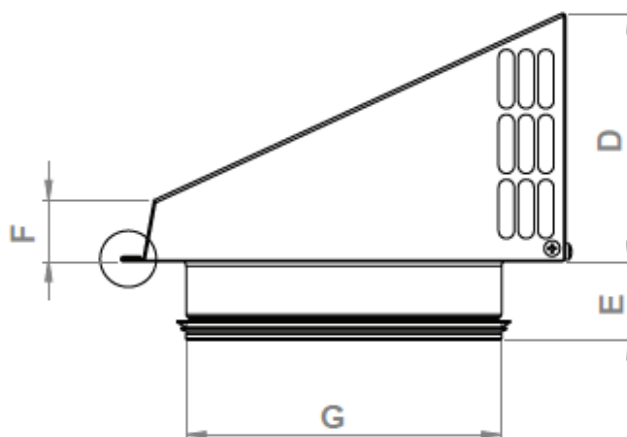
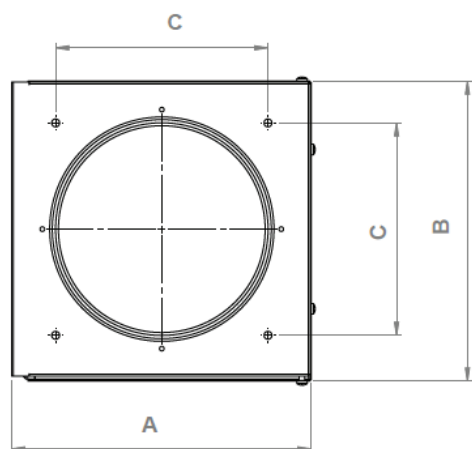


## • ONE - Item Number:

ONE - Item number	Product Description
ONE-125	ONE - Outdoor Wall Grill with rubber gasket, Ø125
ONE-125B	ONE - Outdoor Wall Grill with rubber gasket, Ø125, Black, RAL 9005
ONE-125W	ONE - Outdoor Wall Grill with rubber gasket, Ø125, White, RAL 9003
ONE-160	ONE - Outdoor Wall Grill with rubber gasket, Ø160
ONE-160B	ONE - Outdoor Wall Grill with rubber gasket, Ø160, Black, RAL 9005
ONE-160W	ONE - Outdoor Wall Grill with rubber gasket, Ø160, White, RAL 9003
ONE-200	ONE - Outdoor Wall Grill with rubber gasket, Ø200
ONE-200B	ONE - Outdoor Wall Grill with rubber gasket, Ø200, Black, RAL 9005
ONE-200W	ONE - Outdoor Wall Grill with rubber gasket, Ø200, White, RAL 9003
ONE-250	ONE - Outdoor Wall Grill with rubber gasket, Ø250
ONE-250B	ONE - Outdoor Wall Grill with rubber gasket, Ø250, Black, RAL 9005
ONE-250W	ONE - Outdoor Wall Grill with rubber gasket, Ø250, White, RAL 9003

## • Technical Parameters

### ➤ Products Dimension:



Technical Data ONE / 08.10.2022 / REV.0



SPIRO Ø	A	B	C	D	E	F	Ø G
Ø125	226	226	160	126	40	31	125
Ø160	226	226	160	126	40	31	160
Ø200	270	270	220	145	40	31	200
Ø250	305	305	270	170	40	31	250

## • Specifications

- ✚ Intake and exhaust grill with a nipple, standard powder coated black (RAL 9005), and white (RAL 9003).
- ✚ Material: galvanizing steel, powder coated

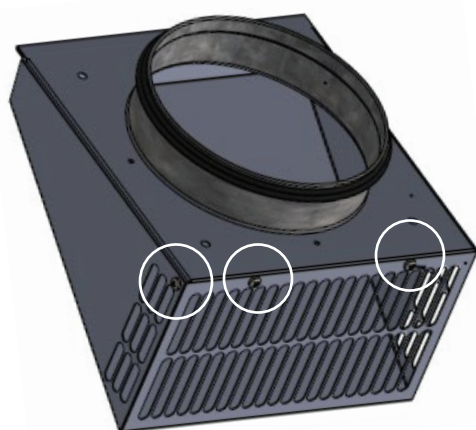
## • Installation

1. The back cover is easily mounted on the wall by removing the 4 screws from the front part (housing). **Picture 1**
2. We recommend using a sealing solution between the neck and the wall to avoid water penetration into the building. The

- ✚ The "ONE – Outdoor wall grill with rubber gasket is made of galvanized sheet steel with a round connection for the ventilation duct. Supplied in nipple design with gasket.

back piece is attached to the wall with 4 screws. **Picture 2**

3. Then screw the front cover into place with 4 screws. **Picture 1**
4. Can be easily cleaned by unscrewing the 4 screws from the front cover. **Picture 1**



Picture 1



Picture 2