

Rotary actuator in connection with a mounting kit for the motorisation of the most common mixing valves in HVAC systems

- Torque motor 5 Nm
- Nominal voltage AC/DC 24 V
- Control modulating 2...10 V
- Position feedback 2...10 V
- Running time motor 140 s



Technical data

| | | |
|------------------------|--|--|
| Electrical data | Nominal voltage | AC/DC 24 V |
| | Nominal voltage frequency | 50/60 Hz |
| | Nominal voltage range | AC 19.2...28.8 V / DC 19.2...28.8 V |
| | Power consumption in operation | 1 W |
| | Power consumption for wire sizing | 2.5 VA |
| | Connection supply / control | Cable 1 m, 4 x 0.75 mm ² |
| | Parallel operation | Yes (note the performance data) |
| Functional data | Torque motor | 5 Nm |
| | Operating range Y | 2...10 V |
| | Operating range Y note | Operating range selectable 0...10 V or 2...10 V |
| | Position feedback U | 2...10 V |
| | Position accuracy | ±5% |
| | Direction of motion motor | clockwise rotation |
| | Manual override | temporary and permanent gear disengagement with rotary knob on the housing |
| | Angle of rotation | 90° |
| | Running time motor | 140 s / 90° |
| | Duty cycle value | 75% (= active time 140 s / operating time 187 s) |
| | Sound power level, motor | 37 dB(A) |
| | Position indication | Reversible scale plate |
| Safety data | Protection class IEC/EN | III Safety Extra-Low Voltage (SELV) |
| | Degree of protection IEC/EN | IP40 |
| | EMC | CE according to 2014/30/EU |
| | Mode of operation | Type 1 |
| | Rated impulse voltage supply / control | 0.8 kV |
| | Control pollution degree | 3 |
| | Ambient temperature | 0...50°C |
| | Storage temperature | -30...80°C |
| | Ambient humidity | Max. 95% r.H., non-condensing |
| Servicing | maintenance-free | |
| Housing colours | Housing cover | orange |
| | Housing base | orange |

Safety notes



- This device has been designed for use in stationary heating, ventilation and air-conditioning systems and must not be used outside the specified field of application, especially in aircraft or in any other airborne means of transport.
- The actuator is to be protected against moisture. It is not suitable for outdoor applications.
- To calculate the torque required, the specifications supplied by the mixing valve manufacturer must be observed.
- Only authorised specialists may carry out installation. All applicable legal or institutional installation regulations must be complied during installation.
- The installer must check for correct principle of operation after installation.
- The switch for changing the direction of rotation and operating range may only be adjusted by authorised specialists. The direction of rotation may not be changed when frost protection control is applied.
- The device does not contain any parts that can be replaced or repaired by the user.
- The device contains electrical and electronic components and must not be disposed of as household refuse. All locally valid regulations and requirements must be observed.
- Caution: Low voltage!

Product features

| | |
|------------------------------------|---|
| Mode of operation | The actuator is connected with a standard modulating signal of 0...10 V and drives to the position defined by the positioning signal. |
| Simple direct mounting | Simple direct mounting with only one screw. The stud bolt included in delivery serves as an anti-rotation device. The mounting position can be freely selected in steps of 90°. |
| Manual override | Manual override with lever possible. Temporary gear disengagement by pushing the rotary knob. Permanent disengagement by pushing and simultaneous rotating the rotary knob clockwise 90°. |
| High functional reliability | The actuator is overload protected and automatically stops when the end stop is reached. The actuator switches off for seven seconds in the case of blocking, then attempts to restart. If the blocked condition persists, the actuator attempts to restart once every two minutes a total of 15 times and subsequently only once every two hours. |

Accessories

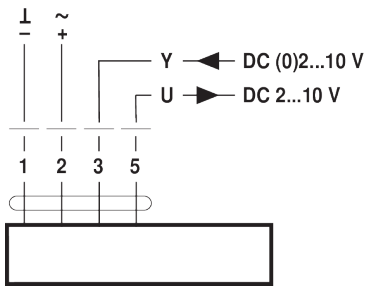
| Mechanical accessories | Description | Type |
|------------------------|---|---------|
| | Mounting kit for LK mixing valve | MS-NRA |
| | Mounting kit for Barberi mixing valves | MS-NRB |
| | Mounting kit for Honeywell/Centra DR..MA mixing valves | MS-NRC |
| | Mounting kit for Honeywell/Centra DRU.. mixing valves | MS-NRC1 |
| | Mounting kit for mixing valves with 12 mm round shaft | MS-NRE |
| | Mounting kit for Hora mixing valves | MS-NRH |
| | Mounting kit for Siemens/Landis&Stäfa mixing valves VCI/VBG/VBF | MS-NRL |
| | Mounting kit for Lazzari mixing valves | MS-NRLA |
| | Mounting kit for Lovato mixing valves | MS-NRLO |
| | Mounting kit for Satchwell MB mixing valves | MS-NRS |
| | Mounting kit for Satchwell MBF mixing valves | MS-NRSF |

Electrical installation


Supply from isolating transformer.

Wiring diagrams

AC/DC 24 V, modulating

**Dimensions****Dimensional drawings**