



45° SPIGOT ELBOW

1353/02-001

PE100, SDR 17

PE100, SDR 17, 45° Spigot Elbow for gas, water, mining and irrigation applications. All fittings are manufactured in virgin PE100 black polyethylene. The Fusion range of spigot fittings allows for complicated yet high performance pipeline systems.

Product description:

45° Spigot Elbow. For gas, water, mining and irrigation applications. PE100, SDR 17, Water PN10, Gas 6 Bar. Temperature range on spigot fittings -10°C to +40°C (Welding temperature range -10°C to +40°C using Fusamatic electrofusion systems. For butt fusion jointing +5°C to +40°C).

Design standards:

The Fusion Group of Companies have numerous local and international product approvals as well as ISO 9001 and ISO 29001 quality management system approvals.

Fusamatic branded spigot fittings are 3rd party certified against the product standards listed (other product certificates are available upon request). Note: Regional variations may apply to some of the standards referenced, please contact us for further details.

- 3rd party approved to EN 12201-3
- 3rd party approved to EN 1555-3
- 3rd party approved to ISO 4437-3
- 3rd party approved to ISO 4427-3

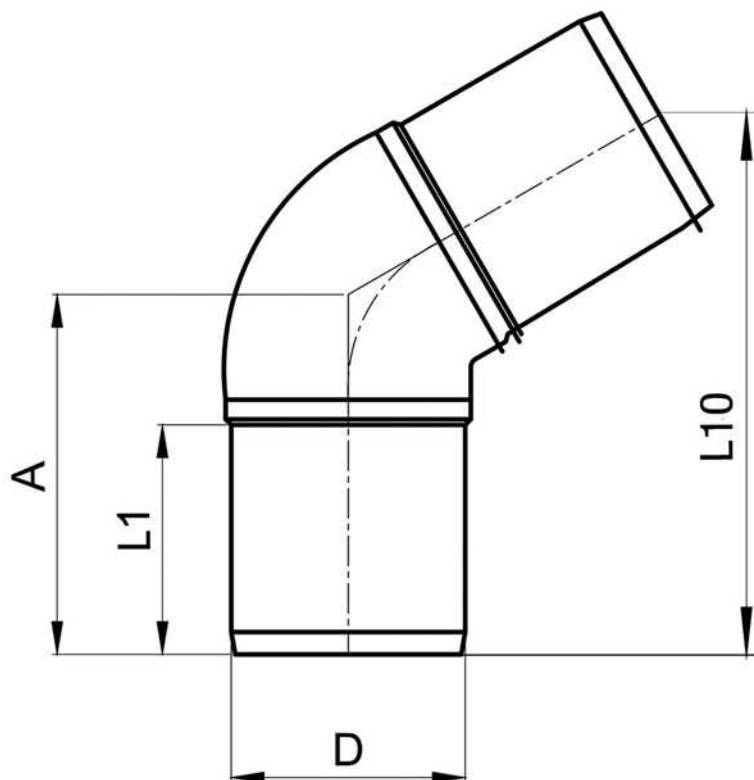
Features:

- Fusamatic branded (unless stated)
- PE100 Black
- Water PN10 / Gas 6 Bar (Depending on PE pipe welded to and any local pipeline pressure regulations)
- SDR 17

Accessories:

- Automatic Butt Fusion Machine
- Electrofusion Control Box
- Pipe Cutters
- Pipe Scrapers
- Pipe Alignment and Rerounding Clamps
- Generators
- Fusion Assist





Reference nos. and dimensions:

Ref. No.	Fitting Size	D	L10	L1	A	Theoretical weight/kg
	mm	mm	mm	mm	mm	
LSEHK50X45V ⁽¹⁾	50-45	50	153	61	76	0.08
LSEHK63X45V	63-45	63	160	63	93	0.18
LSEHK75X45V	75-45	75	176	70	102	0.25
LSEHK90X45V	90-45	90	202	79	118	0.44
LSEHK110X45V	110-45	110	220	82	128	0.7
LSEHK125X45V	125-45	125	239	87	139	0.93
LSEHK140X45V	140-45	140	250	92	145	1.25
LSEHK160X45V	160-45	160	273	98	159	1.79
LSEHK180X45V	180-45	180	290	105	168	2.38
LSEHK200X45V	200-45	200	311	112	179	3.36
LSEHK225X45V	225-45	225	341	120	198	4.37
LSEHK250X45V	250-45	250	368	129	213	5.88
LSEHK280X45V	280-45	280	406	139	235	8.2
LSEHK315X45V	315-45	315	430	150	249	11.12
LSEHK355X45V	355-45	355	490	164	284	16.15
LSEHK400X45V	400-45	400	548	179	317	23
LSEHK450X45V ⁽¹⁾	450-45	450	-	202	375	33
LSEHK500X45V ⁽¹⁾	500-45	500	-	222	410	43

(1) Non Fusamatic Branded

Comments:

We reserve the right to supply non-Fusamatic branded spigot fittings dependent upon product availability.

Check that both pipe(s) and fitting to be joined are compatible, only compatible materials should be joined together. Check PN and SDR rating marked on fitting and compare with that of the pipe. If in doubt, seek advice from the manufacturer. Correct installation procedures should be followed.