



90° SPIGOT ELBOW

1353/16-001

PE100, SDR 17

PE100, SDR 17, 90° Spigot Elbow for gas, water, mining and irrigation applications. All fittings are manufactured in virgin PE100 black polyethylene. The Fusion range of spigot fittings allows for complicated yet high performance pipeline systems.

Product description:

90° Spigot Elbow. For gas, water, mining and irrigation applications. PE100, SDR 17, Water PN10, Gas 6 Bar. Temperature range on spigot fittings -10°C to +40°C (Welding temperature range -10°C to +40°C using Fusamatic electrofusion systems. For butt fusion jointing +5°C to +40°C).

Design standards:

The Fusion Group of Companies have numerous local and international product approvals as well as ISO 9001 and ISO 29001 quality management system approvals.

Fusamatic branded spigot fittings are 3rd party certified against the product standards listed (other product certificates are available upon request). Note: Regional variations may apply to some of the standards referenced, please contact us for further details.

- 3rd party approved to EN 12201-3
- 3rd party approved to EN 1555-3
- 3rd party approved to ISO 4437-3
- 3rd party approved to ISO 4427-3

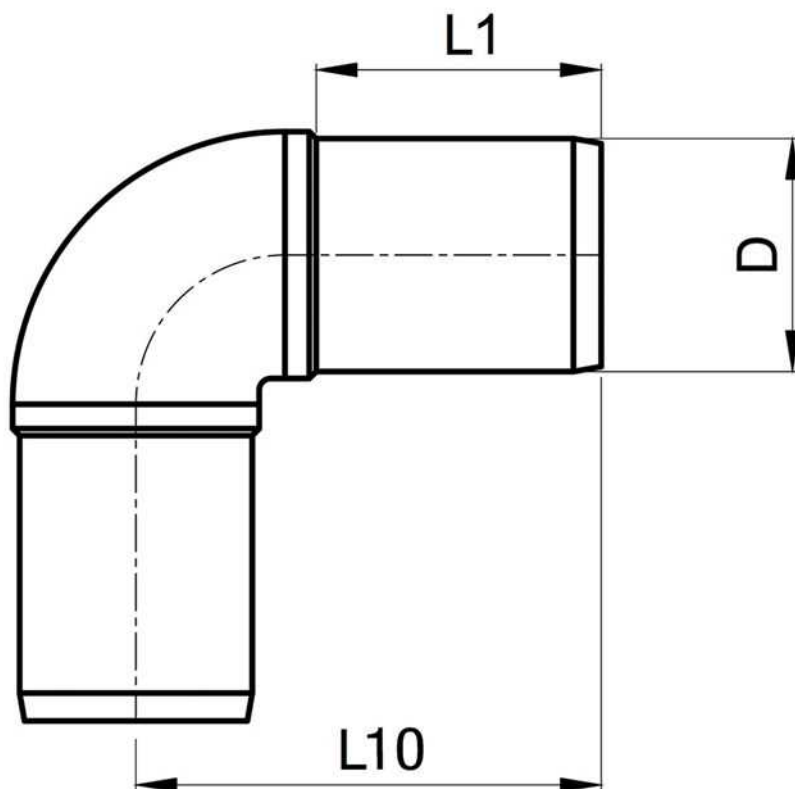
Features:

- Fusamatic branded (unless stated)
- PE100 Black
- Water PN10 / Gas 6 Bar (Depending on PE pipe welded to and any local pipeline pressure regulations)
- SDR 17

Accessories:

- Automatic Butt Fusion Machine
- Electrofusion Control Box
- Pipe Cutters
- Pipe Scrapers
- Pipe Alignment and Rerounding Clamps
- Generators
- Fusion Assist





Reference nos. and dimensions:

Ref. No.	Fitting Size	D	L10	L1	Theoretical weight/kg
	mm	mm	mm	mm	
LSEHK50X90V ⁽¹⁾	50-90	50	108	80	0.11
LSEHK63X90V	63-90	63	111	63	0.19
LSEHK75X90V	75-90	75	126	70	0.32
LSEHK90X90V	90-90	90	145	79	0.49
LSEHK110X90V	110-90	110	161	82	0.78
LSEHK125X90V	125-90	125	173	87	1.05
LSEHK140X90V	140-90	140	195	92	1.51
LSEHK160X90V	160-90	160	205	98	2.15
LSEHK180X90V	180-90	180	230	105	3.1
LSEHK200X90V	200-90	200	245	112	4.35
LSEHK225X90V	225-90	225	264	120	5.26
LSEHK250X90V	250-90	250	292	129	7.66
LSEHK280X90V	280-90	280	340	139	11.46
LSEHK315X90V	315-90	315	370	150	15.56
LSEHK355X90V	355-90	355	401	164	22.17
LSEHK400X90V	400-90	400	451	179	30.96
LSEHK450X90V ⁽¹⁾	450-90	450	522	202	43
LSEHK500X90V ⁽¹⁾	500-90	500	562	222	60

(1) Non Fusamatic Branded

Comments:

We reserve the right to supply non-Fusamatic branded spigot fittings dependent upon product availability.

Check that both pipe(s) and fitting to be joined are compatible, only compatible materials should be joined together. Check PN and SDR rating marked on fitting and compare with that of the pipe. If in doubt, seek advice from the manufacturer. Correct installation procedures should be followed.