



STUB FLANGE ADAPTOR

1356/28-001

PE100 SDR 17

PE100, SDR 17, Stub Flange Adaptor for gas, water, mining and irrigation applications. All fittings are manufactured in virgin PE100 black polyethylene. The Fusion range of spigot fittings allows for complicated yet high performance pipeline systems.

Product description:

Stub Flange Adaptor. For gas, water, mining and irrigation applications. PE100, SDR 17, Water PN10, Gas 6 Bar. Temperature range on spigot fittings -10°C to +40°C (Welding temperature range -10°C to +40°C using Fusamatic electrofusion systems. For butt fusion jointing +5°C to +40°C).

Design standards:

The Fusion Group of Companies have numerous local and international product approvals as well as ISO 9001 and ISO 29001 quality management system approvals.

Fusamatic branded spigot fittings are 3rd party certified against the product standards listed (other product certificates are available upon request). Note: Regional variations may apply to some of the standards referenced, please contact us for further details.

- 3rd party approved to EN 12201-3
- 3rd party approved to EN 1555-3
- 3rd party approved to ISO 4437-3
- 3rd party approved to ISO 4427-3

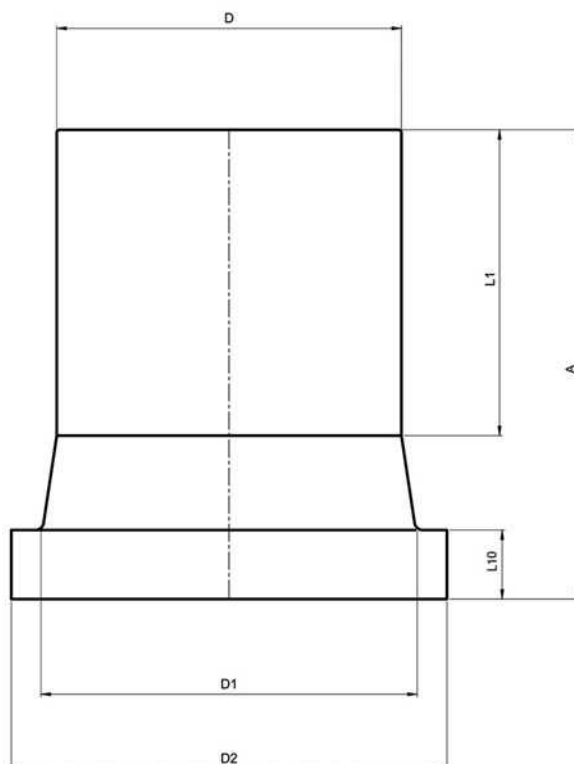
Features:

- Fusamatic branded (unless stated)
- PE100 Black
- Water PN10 / Gas 6 Bar (Depending on PE pipe welded to and any local pipeline pressure regulations)
- SDR 17

Accessories:

- Automatic Butt Fusion Machine
- Electrofusion Control Box
- Pipe Cutters
- Pipe Scrapers
- Pipe Alignment and Rerounding Clamps
- Generators
- Fusion Assist





Reference nos. and dimensions:

Ref. No.	Fitting Size	D	D1	D2	L10	L1	A	Theoretical weight/kg
	mm	mm	mm	mm	mm	mm	mm	
SFHK50V ⁽¹⁾	50	50	60	88	12	62	90	0.11
SFHK63V	63	63	78	102	14	88	120	0.18
SFHK75V	75	75	92	122	16	97	130	0.28
SFHK90V	90	90	108	139	17	106	140	0.37
SFHK110V	110	110	125	158	17	113	155	0.55
SFHK125V	125	125	135	158	20	120	160	0.64
SFHK140V	140	140	155	188	18	128	188	1.04
SFHK160V	160	160	175	212	18	147	185	1.13
SFHK180V	180	180	188	212	20	111	153	1.15
SFHK200V	200	200	230	268	24	125	188	2.12
SFHK225V	225	225	238	268	24	156	205	2.39
SFHK250V	250	250	288	320	25	133	186	3
SFHK280V	280	280	288	320	25	148	213	3.67
SFHK315V	315	315	338	375	25	166	223	4.95
SFHK355V	355	355	376	435	30	174	227	9.44
SFHK400V	400	400	430	485	33	185	242	9.43
SFHK450VP ⁽²⁾	450-DN450	450	465	545	45	195	335	14.26
SFHK450VE ⁽¹⁾	450-DN500	450	514	585	46	195	301	16.5
SFHK500V ⁽¹⁾	500	500	530	585	46	212	308	16.9
SFHK500VP ⁽²⁾	500	500	530	590	46	212	339	16.88
SFHK560V ⁽¹⁾	560	560	615	685	50	235	345	25.6
SFHK560VP ⁽²⁾	560	560	618	690	50	235	373	24.17
SFHK630V ⁽¹⁾	630	630	642	685	50	300	390	29.4
SFHK630VP ⁽²⁾	630	630	645	690	50	255	384	28.42
SFHK710V ⁽¹⁾	710	710	737	800	50	325	425	42.4
SFHK800V ⁽¹⁾	800	800	840	905	52	360	462	58.5
SFHK900V ⁽¹⁾	900	900	944	1005	55	360	485	77.2
SFHK1000V ⁽¹⁾	1000	1000	1047	1110	60	395	525	102.2
SFHK1200V ⁽¹⁾	1200	1200	1245	1330	70	500	600	165.1

The designs, materials and specifications shown are subject to change without notice due to the continuous development of our product range.

STUB FLANGE ADAPTOR

PE100 SDR 17

1356/28-001

Reference nos. and dimensions:

Ref. No.	Fitting Size	D	D1	D2	L10	L1	A	Theoretical weight/kg
	mm	mm	mm	mm	mm	mm	mm	
(1)	Non Fusamatic Branded							
(2)	Short Spigot - Extended with PE100 pipe and certified components in accordance to European Norms.							

Comments:

We reserve the right to supply non-Fusamatic branded spigot fittings dependent upon product availability.

Check that both pipe(s) and fitting to be joined are compatible, only compatible materials should be joined together. Check PN and SDR rating marked on fitting and compare with that of the pipe. If in doubt, seek advice from the manufacturer. Correct installation procedures should be followed.