



STUB FLANGE ADAPTOR

1356/26-001

PE100, SDR 11

PE100, SDR 11, Stub Flange Adaptor for gas, water, mining and irrigation applications. All fittings are manufactured in virgin PE100 black polyethylene. The Fusion range of spigot fittings allows for complicated yet high performance pipeline systems.

Product description:

Stub Flange Adaptor. For gas, water, mining and irrigation applications. PE100, SDR 11, Water PN16, Gas 10 Bar. Temperature range on spigot fittings -10°C to +40°C (Welding temperature range -10°C to +40°C using Fusamatic electrofusion systems. For butt fusion jointing +5°C to +40°C).

Design standards:

The Fusion Group of Companies have numerous local and international product approvals as well as ISO 9001 and ISO 29001 quality management system approvals.

Fusamatic branded spigot fittings are 3rd party certified against the product standards listed (other product certificates are available upon request). Note: Regional variations may apply to some of the standards referenced, please contact us for further details.

- 3rd party approved to EN 12201-3
- 3rd party approved to EN 1555-3
- 3rd party approved to ISO 4437-3
- 3rd party approved to ISO 4427-3

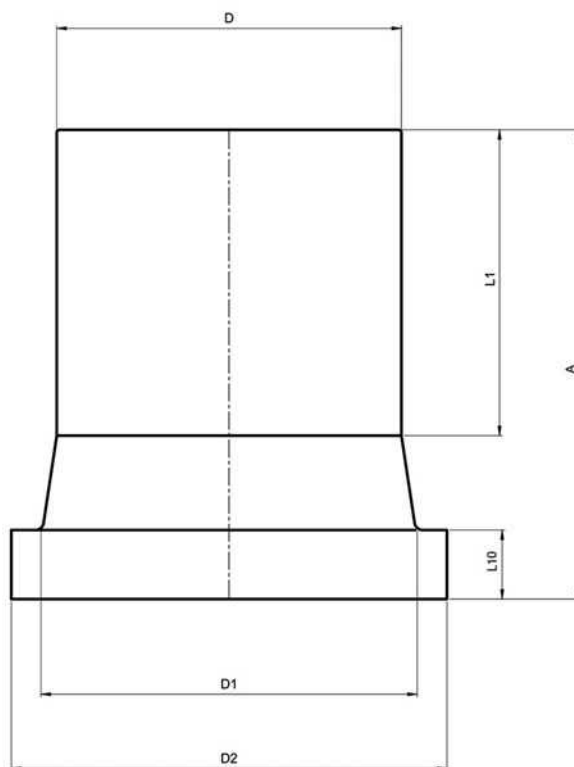
Features:

- Fusamatic branded (unless stated)
- PE100 Black
- Water PN16 / Gas 10 Bar (Depending on PE pipe welded to and any local pipeline pressure regulations)
- SDR 11

Accessories:

- Automatic Butt Fusion Machine
- Electrofusion Control Box
- Pipe Cutters
- Pipe Scrapers
- Pipe Alignment and Rerounding Clamps
- Generators
- Fusion Assist





Reference nos. and dimensions:

Ref. No.	Fitting Size	D	D1	D2	L10	L1	A	Theoretical weight/kg
	mm	mm	mm	mm	mm	mm	mm	
SFHK20N	20	20	28	45	7	55	80	0.03
SFHK25N	25	25	34	58	9	62	81	0.04
SFHK32N	32	32	42	68	10	61	86	0.06
SFHK40N	40	40	51	78	11	60	88	0.09
SFHK50N	50	50	62	88	12	63	92	0.13
SFHK63N	63	63	78	102	14	88	120	0.22
SFHK75N	75	75	92	122	16	97	130	0.33
SFHK90N	90	90	108	138	17	103	140	0.46
SFHK110N	110	110	125	158	18	113	155	0.69
SFHK125N	125	125	135	158	20	120	159	0.82
SFHK140N	140	140	155	188	25	128	190	1.33
SFHK160N	160	160	175	212	25	155	200	1.68
SFHK180N	180	180	188	212	30	152	207	2.02
SFHK200N	200	200	232	268	32	153	210	3.09
SFHK225N	225	225	238	268	32	129	180	2.98
SFHK250N	250	250	288	320	35	140	205	4.52
SFHK280N	280	280	288	320	35	145	211	5.11
SFHK315N	315	315	338	375	35	160	224	6.93
SFHK355N	355	355	376	435	45	172	240	10
SFHK400N	400	400	430	485	50	181	264	14.4
SFHK450NP ⁽²⁾	450-DN450	450	465	545	66	195	360	21.77
SFHK450NE ⁽¹⁾	450-DN500	450	514	585	60	200	306	22.9
SFHK500N ⁽¹⁾	500	500	530	585	60	250	346	26.3
SFHK500NP ⁽²⁾	500	500	530	590	60	212	354	25.06
SFHK560N ⁽¹⁾	560	560	615	685	60	290	400	39.7
SFHK560NP ⁽²⁾	560	560	618	690	80	235	423	38.8
SFHK630N ⁽¹⁾	630	630	642	685	60	300	390	42.5
SFHK630NP ⁽²⁾	630	630	645	690	65	255	404	42.4
SFHK800N ⁽¹⁾	800	800	840	905	65	380	482	88.6

The designs, materials and specifications shown are subject to change without notice due to the continuous development of our product range.

STUB FLANGE ADAPTOR

PE100, SDR 11

1356/26-001

Reference nos. and dimensions:

Ref. No.	Fitting Size	D	D1	D2	L10	L1	A	Theoretical weight/kg
	mm	mm	mm	mm	mm	mm	mm	
(1)	Non Fusamatic Branded							
(2)	Short Spigot - Extended with PE100 pipe and certified components in accordance to European Norms.							

Comments:

We reserve the right to supply non-Fusamatic branded spigot fittings dependent upon product availability.

Check that both pipe(s) and fitting to be joined are compatible, only compatible materials should be joined together. Check PN and SDR rating marked on fitting and compare with that of the pipe. If in doubt, seek advice from the manufacturer. Correct installation procedures should be followed.