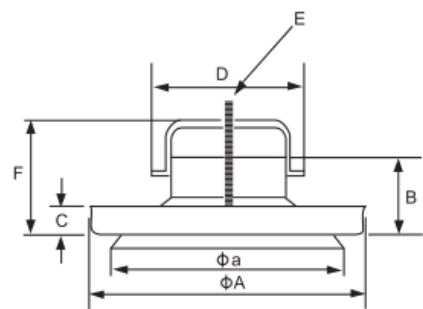


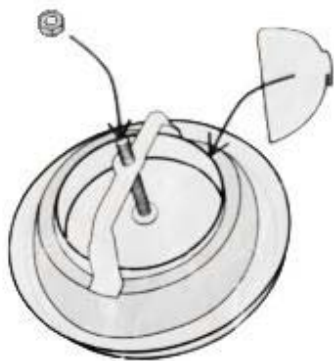
METAL SUPPLY AIR VALVE OTV



Measurement:



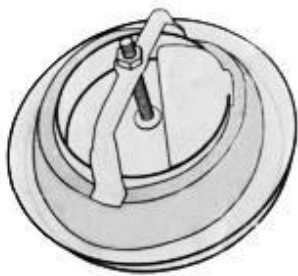
Model	D	d [mm]	A [mm]	Weight[g]
80	112	93	37	140
100	132	110	40	190
125	162	135	46	260
150	193	158	54	370
160	193	158	54	370
200	245	205	64	550



The air direction plate as well as the nut is mounted and can be taken off

The measurement of air flow is made by a pressure difference measurement with a separate measuring tube.

Air flow can be adjusted by changing the adjustments by rotating the disc.

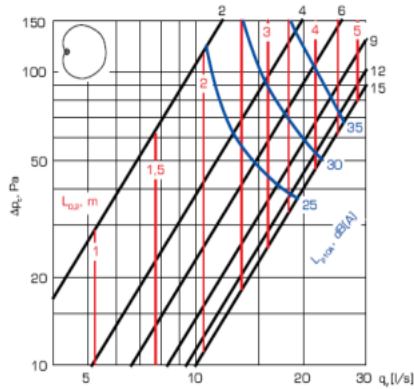


Air flow l/ s (m3/ h) at sound level OTV (DTS)

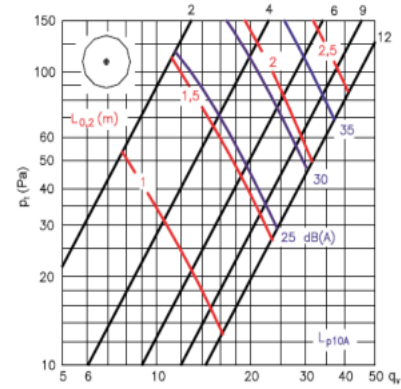
25dB 30dB

OTV 100	With sector plate	15	22 (79)
OTV 100	Without sector plate	19	29 (104)
OTV 125	With sector plate	20	28 (101)
OTV 125	Without sector plate	25	42 (151)
OTV 160	With sector plate	20	42(151)
OTV 160	Without sector plate	40	66 (238)

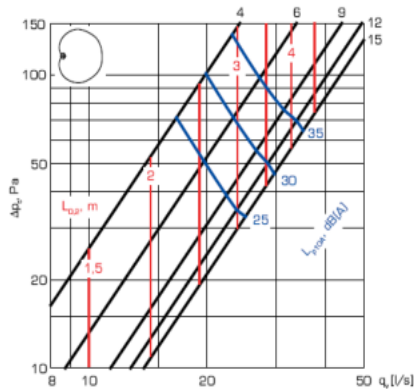
DTS-100 with sector plate



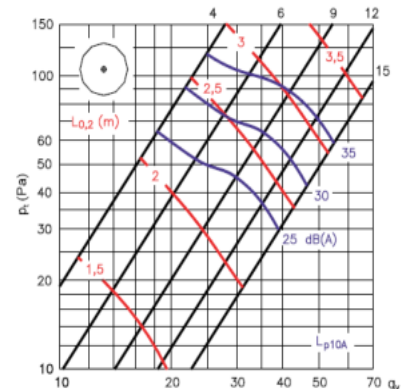
DTS-100 without sector plate



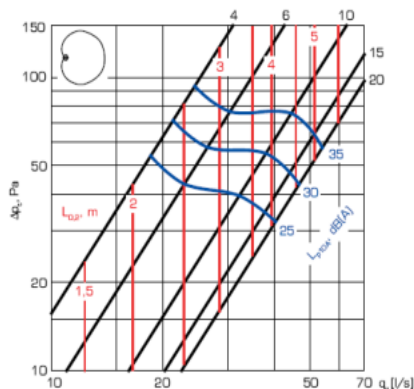
DTS-125 with sector plate



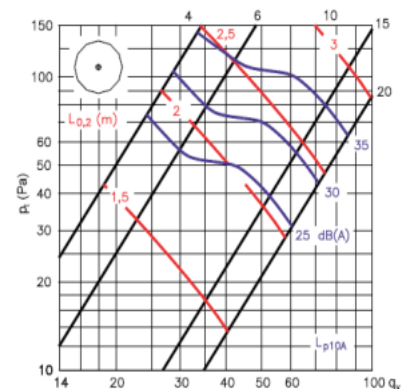
DTS-125 without sector plate



DTS-160 with sector plate



DTS-160 without sector plate



Acoustical data, dimensions and weight

Sound power level L_w

DTS with sector plate

DTS	Correction of sound level in dB at						
	octave bands, middle frequency, Hz						
	125	250	500	1000	2000	4000	8000
100	2	2	0	-2	-4	-4	-12
125	3	3	3	0	-8	-15	-29
160	7	4	2	-1	-6	-17	-31
Tol. ±	3	2	2	2	2	2	3

DTS without sector plate

DTS	Correction of sound level in dB at						
	octave bands, middle frequency, Hz						
	125	250	500	1000	2000	4000	8000
100	-2	2	1	-1	-4	-5	-11
125	4	5	3	-1	-11	-17	-29
160	7	6	3	-2	-11	-19	-32
Tol. ±	3	2	2	2	2	2	3

Sound power levels by octave bands are obtained by adding to total sound pressure level L_{p10A} , dB(A), the corrections K_{oct} presented in the table according to the following formula:

$$L_{Woct} = L_{p10A} + K_{oct}$$

Correction K_{oct} is average value in range of use of the unit.

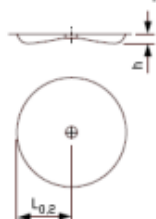
Sound attenuation ΔL

DTS	Correction of sound level in dB at							
	63	125	250	500	1000	2000	4000	8000 Hz
100	22	18	13	11	9	8	7	8
125	20	16	11	9	9	7	6	5
160	18	14	10	9	9	7	6	6
Tol. ±	6	3	2	2	2	2	2	3

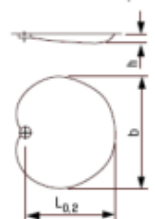
The average sound attenuation ΔL from duct to room including the orifice attenuation of the connecting duct in ceiling installation, is obtained in the table above.

Diffusion pattern

DTS without sector plate



DTS with sector plate



$$L_{0,2(\Delta L)} = k \times L_{0,2}$$

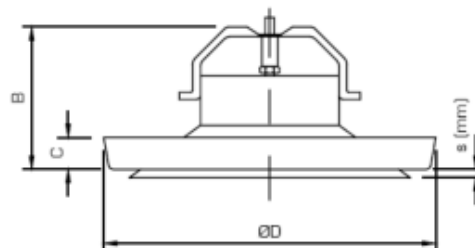
Regulation	Δt (C°)	b	h	k
s = 4	0	$1.45 \times L_{0,2}$	$0.04 \times L_{0,2}$	1.0
s = 4	-10	$1.45 \times L_{0,2(\Delta L)}$	$0.08 \times L_{0,2(\Delta L)}$	0.8
s = 15	0	$1.45 \times L_{0,2}$	$0.04 \times L_{0,2}$	1.0
s = 15	-10	$1.45 \times L_{0,2(\Delta L)}$	$0.1 \times L_{0,2(\Delta L)}$	0.75

Throw in free space mounting

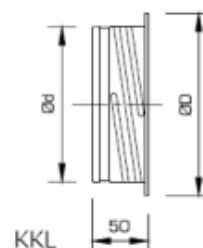
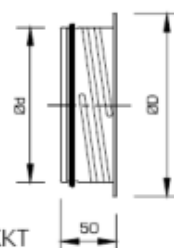
In case of free space mounting the throw can be calculated by using the following factors: when $\Delta t = 0^\circ C$:

Adjustment s (mm)	factor
4	0.5
9	0.45
15	0.4

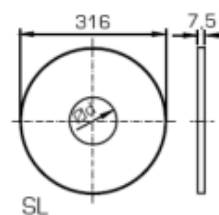
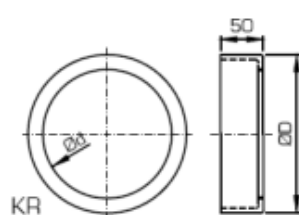
Dimensions and weight



Size	ØD	Ød	B	Weight g
100	143	67	17	270
125	173	76	18	430
160	216	80	19	580



Size	Ød	ØD	Weight KKT (g)	Weight KKL (g)
100	99	122	75	71
125	124	148	102	97
160	159	184	131	125



Size	ØD	Ød
100	150	100
125	180	125
160	223	160

Size	ØD
100	102
125	130
160	160