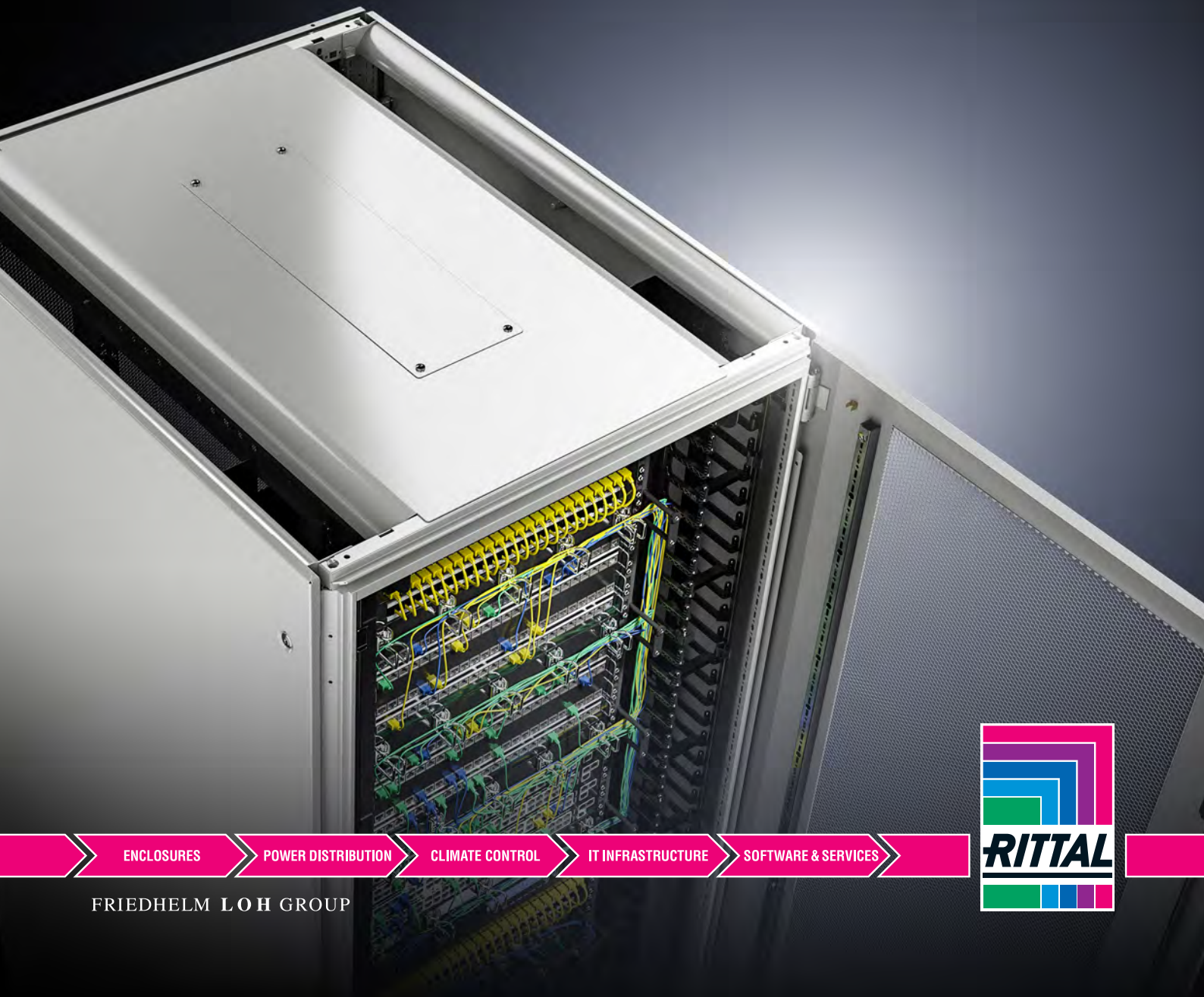


Rittal – The System.

Faster – better – everywhere.

TX CableNet

Get IT. Locate IT. Patch IT.



ENCLOSURES

POWER DISTRIBUTION

CLIMATE CONTROL

IT INFRASTRUCTURE

SOFTWARE & SERVICES

FRIEDHELM LOH GROUP



TX CableNet – Taking cable management to a new level

The TX CableNet offers “Simplicity and Perfection.” This rack unites Rittal’s extensive knowledge and experience of network infrastructures in one truly exceptional solution. The TX CableNet is the future-proof solution for all users who expect “best in class” functionality and total quality, i.e. a network rack which satisfies all requirements by covering all the bases.

13 standard rack options

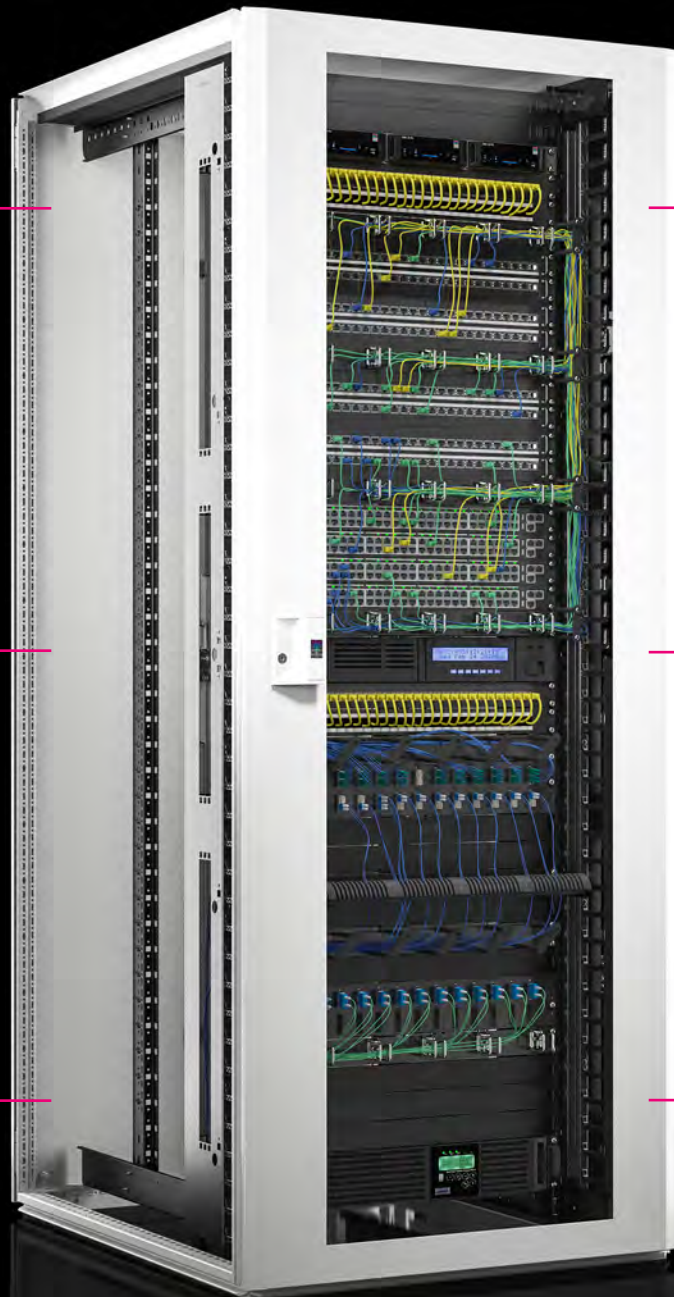
Each with variable cable routing

Best practice and safety

Safe cable entry whilst maintaining the critical cable bending radius

Efficient rack and frame concept

TS- and VX-compatible accessories





- **“Waterfall” cable routing concept**

Simple, safe cable routing from the roof – Convenient laying rather than cumbersome pulling

- **Concealed cut-out for fan module**

Multi-functional roof plate for direct integration or retrofitting a fan module

- **Convenient access**

Side panels and doors are easily fitted and removed for fast access to the inner rack area

- **Vented doors**

Support a mix of active and passive network equipment in the IT rack provided there is a room climate control



- **Comprehensive range of accessories for bespoke interior configuration**

- AX comfort handle with various lock options
- VX base/plinth system
- Extensive range of cable management accessories
- Universal interior installation with variable depth mounting
- Installation directly onto the 482.6 mm (19") section



- **System accessories for assembling a professional IT environment**

- Power distribution system (PDU) with individually adjustable slots and functions to suit the specific application
- CMC III system for monitoring physical ambient parameters
- Fan module with up to three fans for active cooling of the IT components

TX CableNet – Well cared-for

Healthcare

The TX CableNet is ideal as a conventional network IT distributor. The new type of cable entry above the roof – based on the “waterfall” concept – allows for the critical bending radii of copper and fibre-optic cables and makes inserting and clamping even large volumes of cable simple. As part of the climate control concept, vented doors support a blend of active and passive network equipment, such as switches for grouping and distributing data. The vented option with a surface that is 78% perforated improves cooling capability and is ideal for installing active network components and cooling them from the outside in air-conditioned rooms. Active components that can independently draw in cold air through the perforated front door – and release the warm air out of the back through the rear door, which is also perforated, are advantageous.

All relevant rack parameters are readily monitored from a Web browser with the CMC III (Computer Multi Control) monitoring system or smart power distribution units (PDUs) that can be extended with, for example, sensors. By linking to a building or IT management system, it is possible to monitor the distributor infrastructure of even the largest properties and buildings, such as those found in the healthcare system (e.g. in hospitals and other medical facilities).





TX CableNet – Cable management made easy

Telco

With its attractive door design, available as a glazed or perforated option, the TX CableNet blends perfectly into modern office environments. Locations like these, especially telecommunications and computer technology buildings with high installation densities, open-plan offices, corridors as well as low-density small offices, often have raised or hollow floors. For these types of situations, along with the “waterfall” concept with its user-friendly cable routing from above, the TX CableNet also enables cable insertion from underneath the enclosure. In this application, the cables of all IT components such as PCs, telephones or printers are routed to the patch fields panels, grouped together via a switch, and forwarded to a central server. The glazed door of the TX CableNet provides a clear view of the rack interior at all times, enabling complete control of all components. Climate control is easily and safely achieved by the optional retro-fitting of a fan module in the roof panel provided for this purpose. The fan module then replaces the concealed roof cut-out. If, over time, the number of active components increases thereby increasing the need for greater cooling, the fan module can be extended by up to a maximum of 3 fans. Protection against unauthorised access to the IT rack is provided by the AX comfort handle with a security lock which can be installed as an option.





Network rack TX CableNet



Cable management Page 12/13 482.6 mm (19") installation system Page 14

Benefits:

- Site-variable cable routing
- Depending on the option, safe cable entry whilst maintaining the critical cable bending radius
- "Waterfall" concept for cable entry; simple, secure cable routing from the roof – convenient laying rather than cumbersome pulling
- Convenient access: Side panels and doors are easily fitted and removed for fast access to the inner rack area
- Climate control is achieved by the optional installation of a fan module
- TS- and VX-compatible accessories
- Comprehensive range of accessories for bespoke interior configuration

Material:

- Sheet steel

Surface finish:

- Enclosure frame: Dipcoat-primed
- Enclosure panels: Powder-coated

Colour:

- RAL 7035

Supply includes:

- Enclosure frame with doors and roof plate with concealed cut-out for fan module
 - Two 482.6 mm (19") mounting angles, front and rear
 - Glazed sheet steel front door, 130° hinges
 - Sheet steel rear door, solid, one-piece, 130° hinges
 - Locks front and rear: Designer handle with security lock 3524 E
 - IPPC pallet
- Please note the product-specific scope of supply.

Note:

- Depending on how and where it is sited, the door opening angle may vary for selected applications

Approvals:

- UL
- cUL

with glazed door

Units U	Packs of	24	24	24	42	42
Width mm		600	600	800	600	600
Height mm		1200	1200	1200	2000	2000
Depth mm		600	800	800	600	800
Max. load capacity (static) per enclosure N		5000	5000	5000	5000	5000
Distance between prefitted 482.6 mm (19") levels mm		345	445	445	345	445
Model No.	1 pc(s).	7888.276	7888.278	7888.218	7888.266	7888.268
Product-specific scope of supply						
Side panels, lockable, including security lock 3524 E	2 pc(s).	■	■	■	■	■
Roof plate, one-piece, with concealed cut-out for fan module	1 pc(s).	■	■	■	-	-
Roof plate, removable, with waterfall concept for superior cable management allowing for cable entry at the front and rear, or optionally at the side, with a concealed cut-out for the fan module	1 pc(s).	-	-	-	■	-
Roof plate, removable, with waterfall concept for superior cable management allowing for cable entry at the front and rear, with a concealed cut-out for the fan module	1 pc(s).	-	-	-	-	■
Accessories						
Spacers, 20 mm	4 pc(s).	2423.000	2423.000	2423.000	-	-
Baying connector, external	6 pc(s).	8800.490	8800.490	8800.490	8800.490	8800.490
Comfort handle AX	1 pc(s).	2435.100	2435.100	2435.100	2435.100	2435.100
Potential equalisation kit	1 pc(s).	5302.027	5302.027	5302.027	5302.027	5302.027
CMC III Processing Unit	1 pc(s).	7030.010	7030.010	7030.010	7030.010	7030.010

Network rack TX CableNet

with glazed door

Units U	Packs of	42	42	42	47	47
Width mm		800	800	800	800	800
Height mm		2000	2000	2000	2200	2200
Depth mm		800	800	1000	800	1000
Max. load capacity (static) per enclosure N		5000	5000	5000	5000	5000
Distance between prefitted 482.6 mm (19") levels mm		445	445	645	445	645
Model No.	1 pc(s).	7888.208	7888.202	7888.200	7888.228	7888.220
Product-specific scope of supply						
Side panels, lockable, including security lock 3524 E	2 pc(s).	■	–	■	■	■
Roof plate, welded, with waterfall concept for superior cable management allowing for cable entry at the side, with a concealed cut-out for the fan module	1 pc(s).	■	■	■	■	■
Accessories						
Baying connector, external	6 pc(s).	8800.490	8800.490	8800.490	8800.490	8800.490
Cable cage	1 pc(s).	7888.310	7888.310	7888.310	7888.311	7888.311
Cable route	1 pc(s).	7888.320	7888.320	7888.320	7888.322	7888.322
Brush kit	2 pc(s).	7888.302	7888.302	7888.301	7888.302	7888.301
Comfort handle AX	1 pc(s).	2435.100	2435.100	2435.100	2435.100	2435.100
Potential equalisation kit	1 pc(s).	5302.027	5302.027	5302.027	5302.027	5302.027
CMC III Processing Unit	1 pc(s).	7030.010	7030.010	7030.010	7030.010	7030.010

Rittal – The System.



CMC III Processing Unit

www.rittal.com/cmc

Network rack TX CableNet



Cable management Page 12/13 482.6 mm (19") installation system Page 14

Benefits:

- Vented surface area approx. 78% perforated
- Site-variable cable routing
- Safe insertion of cables at the side whilst maintaining the critical cable bending radius
- "Waterfall" concept for cable entry; simple, secure cable routing from the roof – convenient laying rather than cumbersome pulling
- Convenient access: Side panels and doors are easily fitted and removed for fast access to the inner rack area

- Vented doors support the installation of active and passive network components
- Climate control is achieved by the optional installation of a fan module
- TS- and VX-compatible accessories
- Comprehensive range of accessories for bespoke interior configuration

Material:

- Sheet steel

Surface finish:

- Enclosure frame: Dipcoat-primed
- Enclosure panels: Powder-coated

Colour:

- RAL 7035

Supply includes:

- Enclosure frame with doors and roof plate with concealed cut-out for fan module
 - Two 482.6 mm (19") mounting angles, front and rear
 - Sheet steel front door, vented, 130° hinges
 - Sheet steel rear door, vented, one-piece, 130° hinges
 - Locks front and rear: Designer handle with security lock 3524 E
 - IPPC pallet
- Please note the product-specific scope of supply.

Note:

- Depending on how and where it is sited, the door opening angle may vary for selected applications

Approvals:

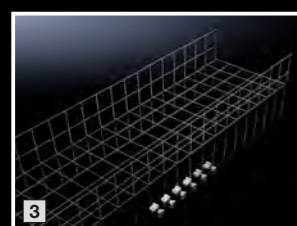
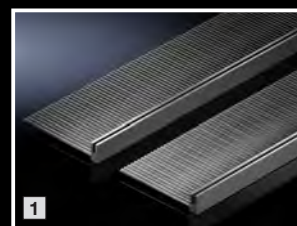
- UL
- cUL

with vented door

Units U	Packs of	42	42	47
Width mm		800	800	800
Height mm		2000	2000	2200
Depth mm		1000	1000	1000
Max. load capacity (static) per enclosure N		5000	5000	5000
Distance between prefitted 482.6 mm (19") levels mm		645	645	645
Model No.	1 pc(s).	7888.100	7888.102	7888.120
Product-specific scope of supply				
Side panels, lockable, including security lock 3524 E	2 pc(s).	■	–	■
Roof plate, welded, with waterfall concept for superior cable management allowing for cable entry at the side, with a concealed cut-out for the fan module	1 pc(s).	■	■	■
Accessories				
Baying connector, external	6 pc(s).	8800.490	8800.490	8800.490
Cable cage	1 pc(s).	7888.310	7888.310	7888.311
Cable route	1 pc(s).	7888.320	7888.320	7888.322
Brush kit	2 pc(s).	7888.301	7888.301	7888.301
Comfort handle AX	1 pc(s).	2435.200	2435.200	2435.200
Potential equalisation kit	1 pc(s).	5302.027	5302.027	5302.027
CMC III Processing Unit Compact	1 pc(s).	7030.010	7030.010	7030.010

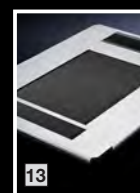
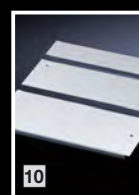
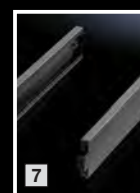
Innovations

		Packs of	Model No.
①	Brush kit For cable entry in the roof plate. For simple top-mounting on the cut-out edge. Plastic support with brushes Plastic brush strip, UL 94-V0 Bristles made of plastic, UL 94-HB (bristle length: 80 mm)	for enclosure depth 800 mm	7888.302
		for enclosure depth 1000 mm	7888.301
②	Cable route For vertical cable routing and strain relief. Material: Sheet steel Surface finish: Spray-finished Colour: RAL 9005 Also required: Punched section with mounting flange, see page 12	for enclosure width x enclosure height: 800 x 2000 mm	7888.320
		for enclosure width x enclosure height: 800 x 2200 mm	7888.322
③	Cable cage For organised laying of large quantities of cables in a baying arrangement. Installation options: Direct screw-fastening to the 482.6 mm (19") mounting angles Material: Sheet steel Surface finish: Spray-finished Colour: RAL 9005	for enclosure width x enclosure height: 800 x 2000 mm	7888.310
		for enclosure width x enclosure height: 800 x 2200 mm	7888.311



Base

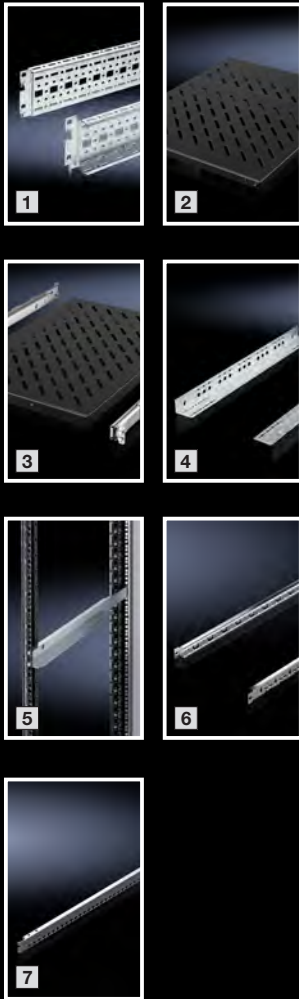
		Packs of	Model No.
④	Base/plinth corner pieces with base/plinth trim panels, front and rear High-load capacity base/plinth corner pieces with moulded self-positioning to the enclosure, may be used with or without trim panels depending on the application. Height 100 mm	for enclosure width 600 mm	8640.002
		for enclosure width 800 mm	8640.003
⑤	Base/plinth trim panel, vented For venting the enclosure via the base/plinth. Specifically in applications such as power distribution where the enclosure gland plates are not used, this can be used to achieve a higher air throughput inside the enclosure.	for enclosure width/depth 600 mm	8620.090
		for enclosure width/depth 800 mm	8620.091
⑥	Base/plinth trim panels with brush strip	for enclosure width/depth 600 mm	8620.092
		for enclosure width/depth 800 mm	8620.093
		for enclosure width/depth 1000 mm	8620.094
⑦	Base/plinth trim panel, side, solid To finish off a base/plinth unit at the sides and for additional stability or interior configuration of bayed base/plinths.	for enclosure depth 600 mm	8640.033
		for enclosure depth 800 mm	8640.034
		for enclosure depth 1000 mm	8640.035
⑧	Levelling foot To compensate for height differences with floor irregularities. Material: Sheet steel	Mounting thread M12	4 pc(s). 4612.000
⑨	Transport kit For enclosures without gland plates and base tray/base mount. Load capacity: Max. admissible static load: 750 kg per enclosure Supply includes: 4 castors (2 of which steerable) including assembly parts	Floor clearance: approx. 40 mm	4 pc(s). 7825.900
⑩	Gland plate, multi-piece, solid, with sliding panel To conceal the entire base opening.	for enclosure width x enclosure enclosure depth: 800 x 800 mm	5502.530
		for enclosure width x enclosure enclosure depth: 800 x 1000 mm	5502.550
⑪	Gland plate module For closing the base Select suitable modules depending on the application. Module plate depth 237.5 mm	vented, for enclosure width 600 mm	7825.360
		vented, for enclosure width 800 mm	7825.380
		with brush strip, for enclosure width 600 mm	7825.361
		with brush strip, for enclosure width 800 mm	7825.381
⑫	Base mount To accommodate gland plates Colour: RAL 7035	for enclosure depth 600 mm	5501.300
		for enclosure depth 800 mm	5501.310
		for enclosure depth 1000 mm	5501.320
⑬	Gland plate, one-piece, vented To conceal the entire base opening.	for width x depth: 800 x 800 mm	5502.330
		for width x depth: 800 x 1000 mm	5502.350



Accessories

TX CableNet

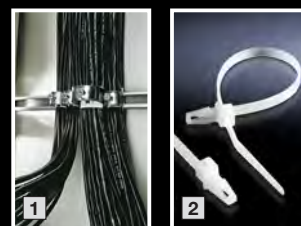
Cable management



			Packs of	Model No.
①	Punched sections with mounting flanges For universal skeleton structures or partial assembly.	for the outer mounting level	4 pc(s).	for enclosure width/depth 800 mm 8612.180
				for enclosure width/depth 1000 mm 8612.100
		for the inner mounting level	4 pc(s).	for enclosure width/depth 800 mm 8612.080
				for enclosure width/depth 1000 mm 8612.000
②	Component shelf, static installation For static installation between two 482.6 mm (19") mounting levels. Colour: RAL 9005 Load capacity: 50 kg		1 pc(s).	Distance between levels min./max. 400 – 600 mm 5501.655
				Distance between levels min./max. 600 – 900 mm 5501.665
③	Component shelf, pull-out For mounting between two 482.6 mm (19") mounting levels. Colour: RAL 9005 Load capacity: 50 kg		1 pc(s).	Distance between levels min./max. 400 – 600 mm 5501.675
				Distance between levels min./max. 600 – 900 mm 5501.685
④	Slide rails, static installation For mounting between a front and rear mounting level.		2 pc(s).	Distance between levels 345 mm 5501.410
				Distance between levels 445 mm 5501.420
				Distance between levels 645 mm 5501.440
⑤	Slide rail, depth-variable For mounting on the front mounting level.		2 pc(s).	Distance between levels 400 – 600 mm 5501.460
				Distance between levels 600 – 825 mm 5302.035
⑥	Combination rail Combination of a C rail for cable clamping with cable clamps and a cable guide rail with T-heads for cable routing. The cables can optionally be secured to the combination rail with cable clamps, cable ties or velcro fasteners to be relieved of strain.		4 pc(s).	1 U, for 482,6 mm (19") level 5302.026
⑦	Combination rail For cable routing and strain relief of routed cables on the frame structure.		4 pc(s).	for enclosure width/depth 600 mm 5302.020
				for enclosure width/depth 800 mm 5302.021
				for enclosure width/depth 1000 mm 5302.022

Cable management

			Packs of	Model No.
①	Cable clamps for cable diameter For attaching cables to the C rail.	6 – 14 mm	25 pc(s).	7077.000
		12 – 18 mm		7078.000
		18 – 22 mm		7097.000
		22 – 26 mm		7097.220
		26 – 30 mm		7097.260
		30 – 34 mm		7097.300
		34 – 38 mm		7097.340
		38 – 42 mm		7098.000
		42 – 56 mm		7097.100
	56 – 64 mm	7099.000		
②	Cable ties For fastening cables to the enclosure profile or mounting system parts.	150 mm	100 pc(s).	2597.000
③	Nylon loop For attaching cable bundles. Individual cables may be added or removed. Ideal for sensitive data cables (fibre-optic/Cu).	20 x 130 mm	10 pc(s).	7072.220
		20 x 200 mm		7072.230
		20 x 300 mm		7072.240
④	Nylon tape For tidy cable routing, protects the cable sheathing, is easily reopened and reusable, may be cut to the required length.	16 x 5000 mm	1 pc(s).	2203.400
⑤	Cable shunting ring For flexible, system-compatible cable routing at the sides on 482.6 mm (19") mounting angles.	125 x 85 mm	10 pc(s).	7111.900
		125 x 65 mm		7111.000
		85 x 43 mm		7112.000
⑥	Shunting ring To accommodate large quantities of cables, for side attachment to 482.6 mm (19") sections and mounting frames in 800 mm wide network enclosures.	330 x 90/70 mm	4 pc(s).	7220.600
⑦	Cable routing bars, 482.6 mm (19") attachment For structured routing of entire cable bundles. Horizontal cable routing within the distributor level.	4 U	4 pc(s).	7111.224
		1 U	10 pc(s).	7111.214
⑧	Cable routing bars for universal use For structured routing of entire cable bundles. Vertical and horizontal cable routing inside within the enclosure or the distributor level.	4 U	4 pc(s).	7111.222
		1 U	10 pc(s).	7111.212
⑨	Cable duct Duct for concealed cable routing. Convenient access to the cabling at any time via the hinged duct cover, optionally removable. Colour: RAL 9005	for enclosure width/height 800 x 2000 mm	1 pc(s).	5302.052
		for enclosure width/height 800 x 2200 mm		5302.053
⑩	Cable finger for U-based cable routing. Colour: RAL 9005	6 U	14 pc(s).	5502.115



482.6 mm (19") assembly components

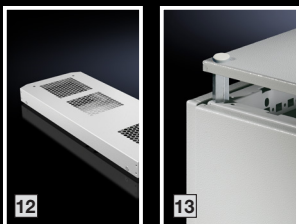
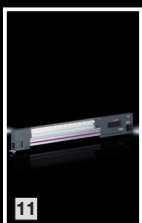
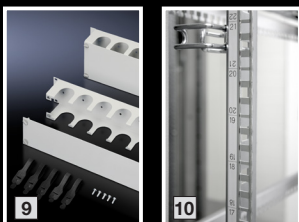
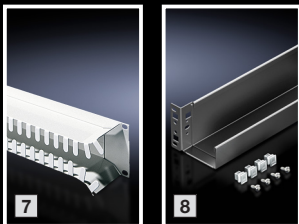
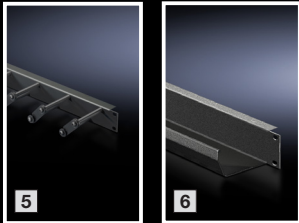
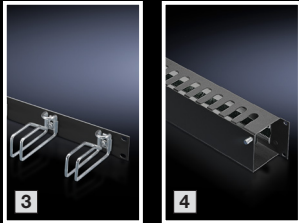
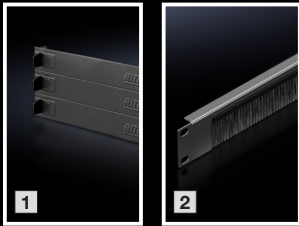
			Packs of	Model No.
⑪	Captive nut, 0.8 – 2.5 mm, with contact For attaching rack-mounted electronic equipment, 482.6 mm (19") installed equipment and blanking plates to mounting angles, 482.6 mm (19").	M5 x 16 mm	50 pc(s).	2094.500
		M6 x 16 mm		2094.200
⑫	482.6 mm (19") fastener, 1 U, with contact For simple screw connection of installation components within the 482.6 mm (19") mounting level.	M5	24 pc(s).	2090.000
⑬	Assembly screws For rack-mounted electronic equipment, 482.6 mm (19") installed components and blanking plates.	Multi-tooth 25 M5 x 16 mm	50 pc(s).	7094.130
		Multi-tooth 30 M6 x 16 mm		7094.140



Accessories

TX CableNet

482.6 mm (19") installation system



			Packs of	Model No.
①	Blanking panel, tool-free attachment, RAL 9005 For sealing unused areas within the 482.6 mm (19") mounting level.	3 U (3 x 1 U)	3 pc(s).	7151.305
②	Cable management panel with brush strip, RAL 9005 For convenient, simple cable routing between two areas separated by a 482.6 mm (19") mounting level, for example, between the front and rear areas of the 482.6 mm (19") mounting level.	1 U	1 pc(s).	5302.202
③	Cable management panel with steel rings, RAL 9005 For horizontal management of the patch cables, with 5 cable shunting rings.	1 U, ring 43 x 55 mm	1 pc(s).	5502.205
		1 U, ring 43 x 105 mm		7257.005
		2 U, ring 85 x 125 mm		7257.105
④	Cable management panel with front panel, RAL 9005 Versatile cable entry options: From above via cut-outs for optimum insertion of patch cables, from the front with direct access via a flap with quick-release fasteners; or inserted from the rear via a cut-out with brush strips.	2 U	1 pc(s).	5502.235
⑤	Cable management panel with cable routing bars, RAL 9005 For horizontal management of the patch cables, with 5 cable routing bars. Opening the individual cable routing bars allows user-friendly modification and extension of the cabling.	1 U	1 pc(s).	5502.225
⑥	Cable routing channel, RAL 9005 To hold the patching cables.	1 U	1 pc(s).	5502.245
⑦	Panel for cable routing, RAL 7035 To accommodate fibre optic and copper cables. Fibres from the patch panels are placed into the tray via openings and may be distributed at the sides. Rounded openings protect the cable sheathing.	2 U	1 pc(s).	7269.135
⑧	Cable tray, depth-variable For protected cable routing between the front and rear installation area.	Mounting dimensions 350 – 550 mm	1 pc(s).	5302.043
⑨	Cable management duct, horizontal, RAL 7035 For concealed, simple cable routing of even large quantities of cables to equipment within the 482.6 mm (19") mounting level.	2 U	1 pc(s).	7158.100
⑩	Adhesive measurement strips For clear identification of the various height units. For retrofitting to existing 482.6 mm (19") sections. Simply stick onto the side adjacent to the system punchings.	1 – 56 U	1 pc(s).	7950.100
⑪	IT LED system light, 600 lm For optimum illumination in the IT rack. Ready to use immediately, thanks to plug-in connection cable. All-insulated, with internal fuse (T 2A) for operation with Europlug (to CEE 7/16) and IEC 320 connector.	Length: 337 mm Light colour: 4000 K (neutral white)	1 pc(s).	7859.000

Roof

			Packs of	Model No.
⑫	Fan module For active ventilation. Including 2 fans, the unit may optionally be extended to max. 3 fans.		1 pc(s).	5503.010
⑬	Spacers To raise the roof plate for 1200 mm high enclosures.	Height: 20 mm, thread M12	4 pc(s).	2423.000

Power Distribution Unit

Robust, compact basic power distributor for the IT environment.

Other variants options with extensive measurement and management functions can be found at www.rittal.de/pdu

Benefits:

- With the compact PDU, any IT rack is easily equipped with a professional power distribution system
- With the TX CableNet, assembly is tool-free
- Compact design
- Easy to install, even in the zero-U space

Power			Slots/slot type			Dimensions	PDU installed in rack/min. Enclosure height mm		Model No.
No. of phases	Phase current A	Output kW	Input	Outputs BS1363	Outputs IEC C19	PDU length mm	TX CableNet rack frame	TX CableNet 482.6 mm (19") mounting angles	
PDU, basic version									
1~	16	3.7	IEC C 20	8	-	450	800	800	7979.102
1~	32	7.4	CEE	4	2	450 (19"/1 U)	800	800	7979.104
1~	16	3.7	CEE	12	1	695	1200	1200	7979.110
1~	32	7.4	CEE	16	2	845	1200	1200	7979.112
1~	32	7.4	CEE	12	4	845	1200	1200	7979.113
1~	16	3.7	CEE	24	4	1095	1200	1800	7979.115
1~	32	7.4	CEE	24	4	1295	1800	1800	7979.116
PDU UK, basic version									
1~	13	3.0	BS1363	6	-	450	800	800	7979.801
1~	13	3.0	BS1363	8	-	695	800	800	7979.811
1~	13	3.0	BS1363	12	-	845	1200	1200	7979.812
1~	13	3.0	BS1363	16	-	1095	1200	1800	7979.813
1~	16	3.7	CEE	16	4	1295	1800	1800	7979.814
1~	32	7.4	CEE	16	4	1495	1800	1800	7979.815

Socket strips

in an aluminium duct

The socket strips in the aluminium duct are available in various lengths with different functional elements.

Material:

- Aluminium section: Natural anodised
- Socket inserts: Polycarbonate

Supply includes:

- Socket strip
- 2 mounting brackets
- Assembly parts

Version	Rated current A	Connection	No. of sockets	Attachment			Length mm	Mounting dimensions mm ¹⁾	Packs of	Model No.
				Frame	Wall-mounted distributor, horizontal	482.6 mm (19") level				
Connector type F (CEE 7/4) earthing-pin										
1 Without rocker switch	16	Cable	3	■	-	-	262.6	232.5	1 pc(s).	7240.110
			7	■	■	■	482.6	452.5		7240.210
			12	■	-	-	658.6	628.5		7240.310
2 With rocker switch	16	Cable	3	■	-	-	306.6	482.6	1 pc(s).	7240.120
			7	■	■	■	482.6	452.5		7240.220
3 Overvoltage protection, type 3 and interference suppressor filter	16	Cable	5	■	■	■	482.6	452.5	1 pc(s).	7240.230
			9	■	-	-	658.6	628.5		7240.330
4 Circuit-breaker, type B, 16 A, 2-pole	16	Cable	5	■	■	■	482.6	452.5	1 pc(s).	7240.240
UPS strip, connection cable with 10 A - IEC 320 connector, type E, with G fuse, 10 A	10	C14	7	■	■	■	482.6	452.5	1 pc(s).	7240.260
FI switch, 0.03 A, 2-pin, type A	16	Cable	5	■	■	■	482.6	452.5	1 pc(s).	7240.280
C13 connector type										
For IEC 320 connectors	16	Cable	12	■	■	■	482.6	452.5	1 pc(s).	7240.200
For IEC 320 connectors with IEC 320 input	10	C14	9	■	■	■	482.6	452.5	1 pc(s).	7240.201

¹⁾ Variable attachment distance within a range of 25 mm, the distance given is hole centre - hole centre of mounting brackets.



Rittal – The System.

Faster – better – everywhere.

- Enclosures
- Power Distribution
- Climate Control
- IT Infrastructure
- Software & Services

You can find the contact details of all Rittal companies throughout the world here.



www.rittal.com/contact

XWWW00223EN2109

ENCLOSURES

POWER DISTRIBUTION

CLIMATE CONTROL

IT INFRASTRUCTURE

SOFTWARE & SERVICES



FRIEDHELM LOH GROUP