

LIFAair®

GG
COOL

LA air purifiers

2021

6GCool



WORLD'S SMALLEST, MOST POWERFUL MOBILE AIR PURIFIER

Patented 6G filtration technology against smoke,
pollutants, allergens, harmful bacteria and viruses |
8h battery life | Replaceable filters

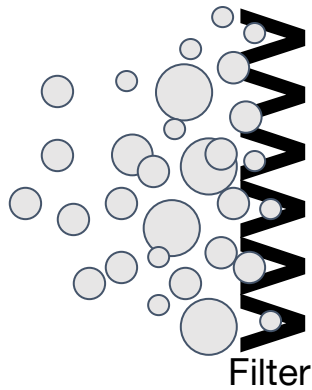
6GCool

personal clean air zone

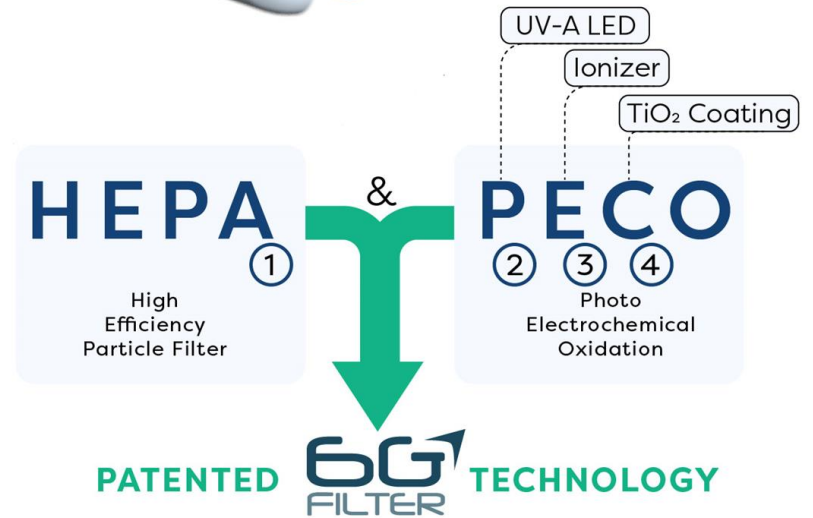
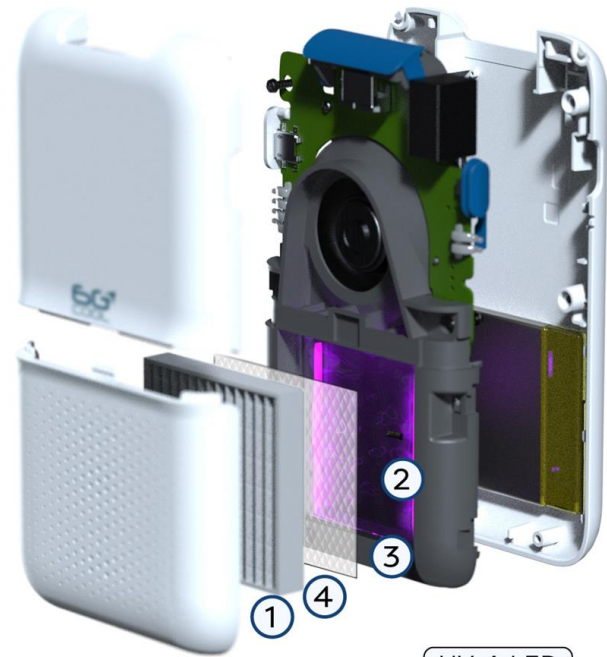
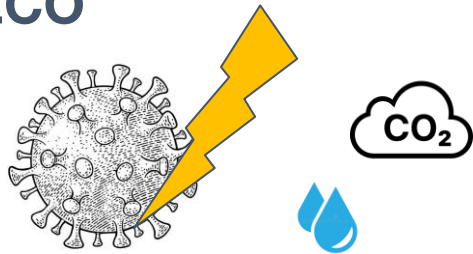


Technology

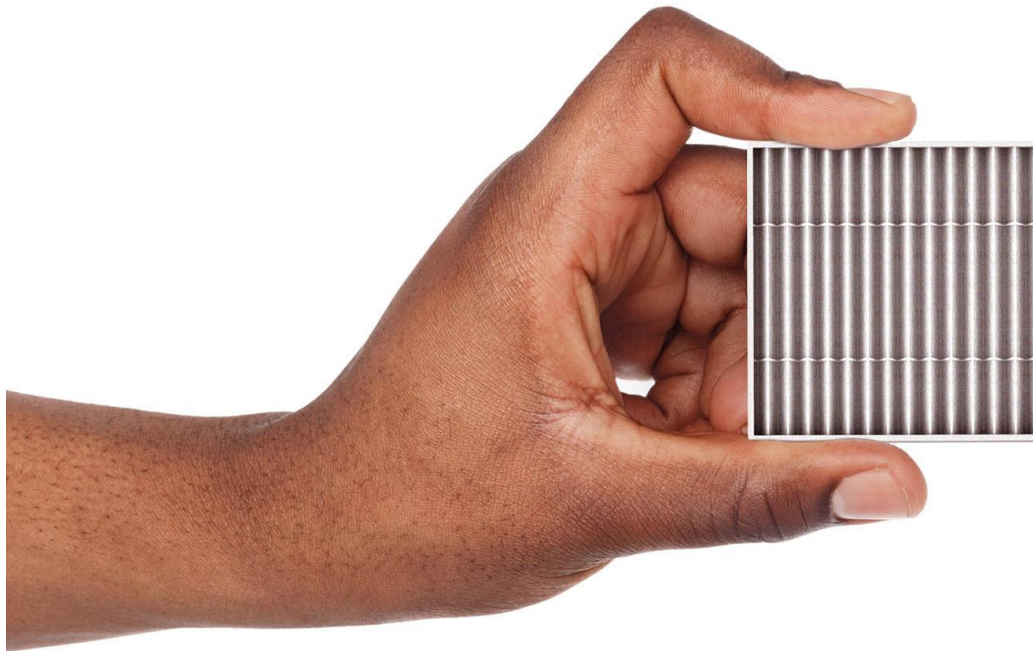
HEPA



PECO



Filters



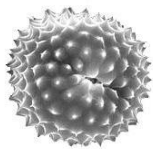
HEPA-filter should be changed approximately once a month.

PECO-filtration is continuous and does not require filter changes.

Efficiency



70µm
Human Hair



30µm
Pollen



5µm
Bacteria



2.5µm
PM2.5

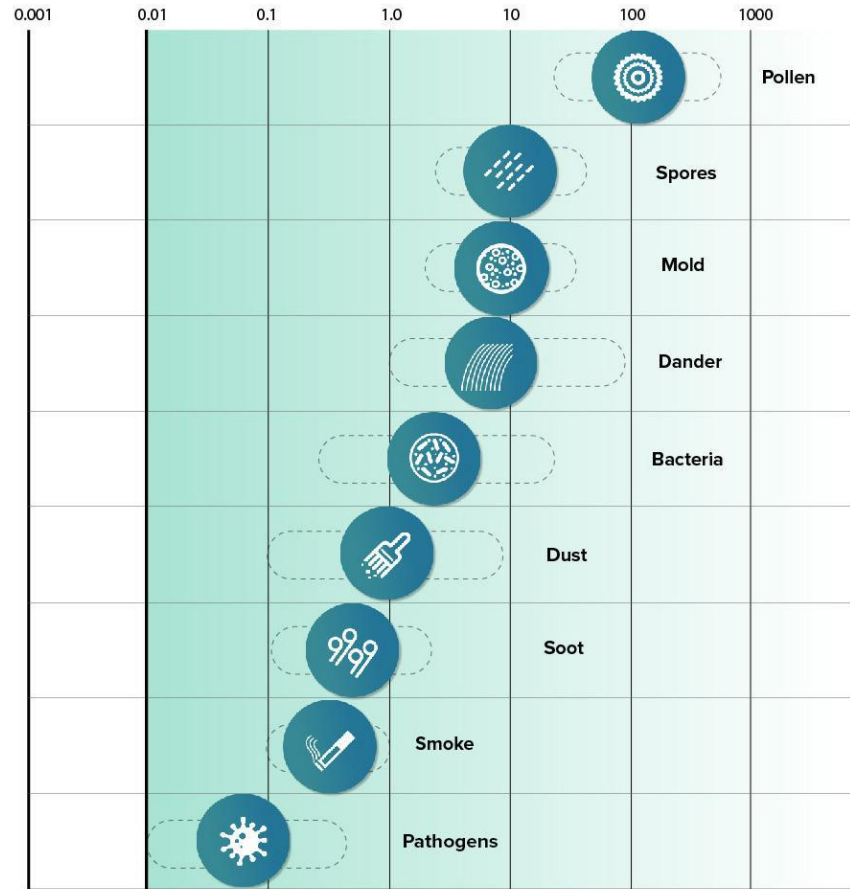


1µm
Dust

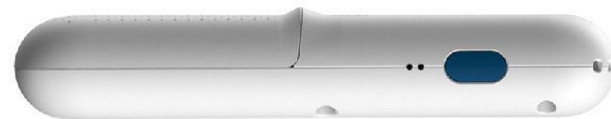


0.1µm
Virus

Particle size (microns)



6G FILTRATION PERFORMANCE



Testing



Essential requirement	Applied Specifications/Standards	Test Report Number	Result
EMC	EN 55032-2015; EN 55035: 2017 EN 61000-3-2:2014; EN 61000-3-3:2013	E1126-LF	Pass



99.99%
EFFICIENCY



99.7%
EFFICIENCY



91.8%
EFFICIENCY



PASS:
NO HARMFUL OZONE

6G Cool



6GCOOL GETS EXCELLENT RESULTS IN SGS TESTING

Page 3 of 4

Report No.: SHES210200267071

Table of Results:

The samples were tested as requested and the following results were obtained:

Product was supplied by fully charged batteries, setting at high fan speed in the 1 m³ test chamber.

Test was conducted and referred to standard: GB 21551.3-2010 Appendix A

Virus and host cell	Action time	Serial number	Air virus content (TCID ₅₀ /m ³)	Removal rate (%)
H1N1 Influenza virus (A/PR/8/34) Host cell: MDCK	0 (CK)	1	5.13*10 ⁶	
		2	5.13*10 ⁶	
		3	6.76*10 ⁶	
	120 mins	1	4.07*10 ²	99.99
		2	5.13*10 ²	99.99
		3	5.13*10 ²	99.99

Note: The natural decay of the microorganisms in the air has been eliminated.

Cognitive Performance

Increased air quality → increased performance

Source: [here](#)

ABSTRACT

Indoor Air Quality and Cognitive Performance*

This paper studies the causal impact of indoor air quality on the cognitive performance of individuals using data from official chess tournaments. We use a chess engine to evaluate the quality of moves made by individual players and merge this information with measures of air quality inside the tournament venue. The results show that poor indoor air quality hampers cognitive performance significantly. We find that an increase in the indoor concentration of fine particulate matter (PM_{2.5}) by 10 µg/m³ increases a player's probability of making an erroneous move by 26.3%. The impact increases in both magnitude and statistical significance with rising time pressure. The effect of the indoor concentration of carbon dioxide (CO₂) is smaller and only matters during phases of the game when decisions are taken under high time stress. Exploiting temporal as well as spatial variation in outdoor pollution, we provide evidence suggesting a short-term and transitory effect of fine particulate matter on cognition.

JEL Classification: D91, I1, J24, Q50, Z20

Keywords: indoor air quality, cognition, worker productivity, chess

Corresponding author:
Steffen Künn
Maastricht University

6GCool



IN THE CAR



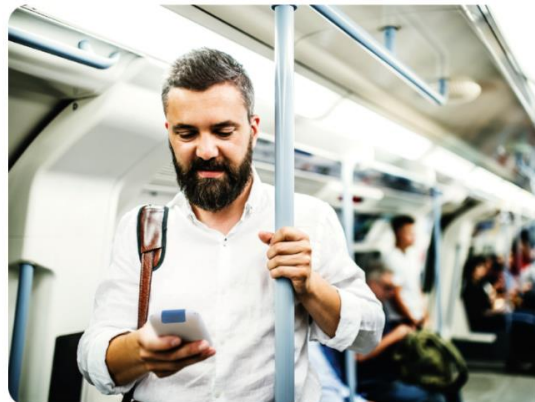
WHEN YOU TRAVEL



IN CROWDED PLACES



PROTECT LOVED ONES



Healthcare professionals, lawyers, academics, elderly.

→ (Young) consumers, rising health consciousness! Upper middle class.

6GCool

More information www.6GCool.com

Initial demo package:

50.00€ per 6GCool, VAT 0% (max 10 6GCool)
+ transportation to wanted destination.

