

English

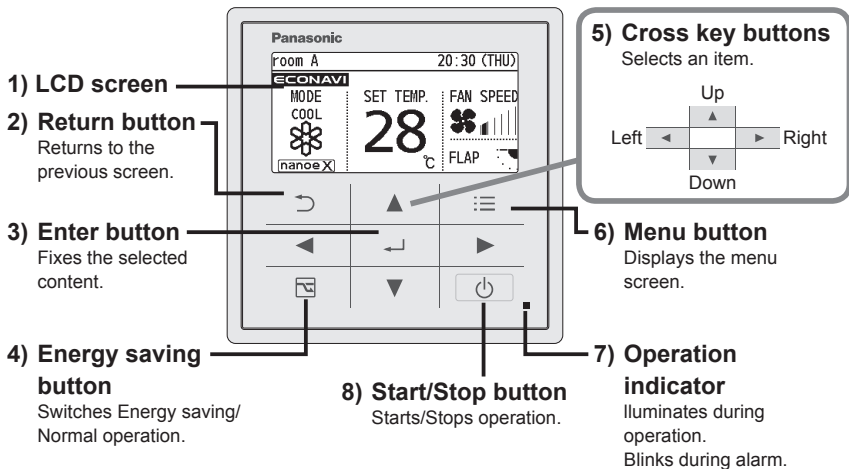
Read through the Installation Instructions before you proceed with the installation.

In particular, you will need to read under the “Safety Precautions” on page 3.

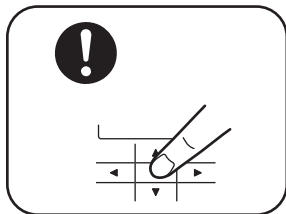
Contents

● Part Names	2
● Supplied accessories	2
● Safety Precautions	3
● Specifications	4
● Installation Precautions	5
● Mounting	7
Exposed type	7
Embedded type	8
● Setting	9
Language	9
Clock	9
Controller name	9
Service contact	10
RC. setting mode	11
Detailed settings	11
Auto address	12
Set elec. consumption	12
● Confirming Information	13
● Test Operation	14

Part Names Control panel



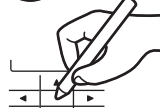
Note




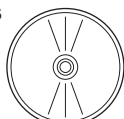
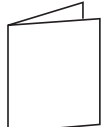
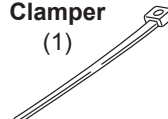
Press centre



No glove



No pen

Supplied accessories				
Screw M3.8 x 16 (2) 	Instructions (1) 	Quick Reference (1) 	Clamper (1) 	

*Remote control wiring is not supplied. (field supplied item)

Safety Precautions

Read before installation

- Read the Installation Instructions carefully to install the remote controller correctly and safely.
Be sure to read the Safety Precautions in particular before installation.
- After the installation is complete, perform test operation to confirm that no abnormality is present.
- We assume no responsibility for accidents or damages resulting from methods other than those described in the installation instructions or methods without using specified parts.
Malfunctions that occurred due to the unauthorised installation methods are not covered by the product warranty.
- Read the installation instructions supplied with indoor units as well.



WARNING

This symbol refers to a hazard or unsafe practice which can result in severe personal injury or death.



CAUTION

This symbol refers to a hazard or unsafe practice which can result in personal injury or product or property damage.



WARNING

- Turn off the circuit breaker of the units before installation.
- Ask your dealer or professionals for installation and electric work.

- This controller shall be installed in accordance with National Wiring Regulations.
- Connect and fix the specified cables for wiring securely.
- Do not allow the connection to be exposed to the external force of the cables.
- Choose an installation location that sufficiently supports the weight of the remote controller.



CAUTION

- Do not use the remote controller at the following locations.
 - Location where condensation occurs
 - Location where flammable gases, etc. may leak
 - Location where corrosive gases, etc. may leak
 - Location with lots of water or oil droplets (including machine oil)
 - Location where voltage fluctuation frequently occurs
 - Location where there is a machine producing electromagnetic radiation
 - Location where droplets of organic solvents spread
 - Location where acidic or alkaline solutions or special sprays are frequently used
- Do not operate with wet hands.
- Do not wash with water.

NOTICE The English text is the original instructions. Other languages are translation of the original instructions.

Specifications

Model No.	CZ-RTC5B
Dimensions	(H) 120 mm x (W) 120 mm x (D) 16 mm
Weight	180 g
Temperature/ Humidity range	0 °C to 40 °C / 20 % to 80 % (no condensation) *Indoor use only.
Power Source	DC16 V (supplied with indoor unit)
Clock precision	± 30 seconds/month (at normal temperature 25 °C) *Adjust periodically.
Number of connectable indoor units	Up to 8 units

datanavi

This unit supports datanavi.

For details on the usage, supporting regions, etc.,
visit the following URL.

<https://datanavi.ac.smartcloud.panasonic.com/global/>



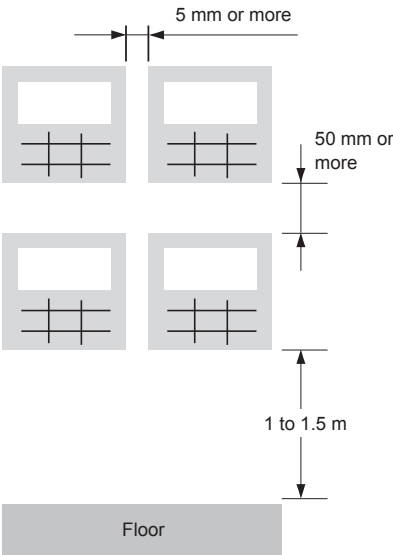
Rotation operation

It is possible to make rotation operation settings on this unit.

For more information, refer to the Operating Instructions in CD (supplied).

Installation Precautions

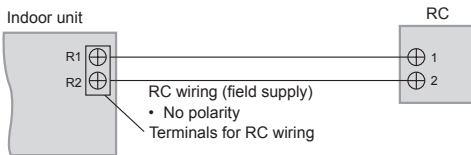
Installation location



- Install at the height of 1 to 1.5 m from the floor (Location where average room temperature can be detected).
- Install vertically against the floor.
- When installing more than 1 remote controller next to each other, keep distance of 5 mm on the right and left and 50 mm on top and bottom.
- Avoid the following locations for installation.
 - By the window, etc. exposed to direct sunlight or direct air
 - In the shadow or backside of objects deviated from the room airflow.
 - Location where condensation occurs (The remote controller is not moisture proof or drip proof.)
 - Location near heat source
 - Uneven surface
- Keep distance of 1 m or more from the TV, radio and PC. (Cause of fuzzy images or noise)

Remote control wiring

■ Wiring diagram



■ Type of wiring

- Use cables of 0.5 to 1.25 mm².

- Total wire length: 500 m or less (The wire length between indoor units should be 200 m or less.)

■ Number of connectable units

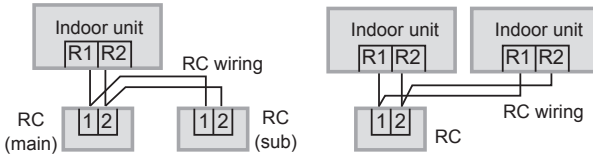
Remote controller: Max. 2

Indoor unit: Max. 8

Attention

- Use the field supplied RC wiring with at least 1 mm in thickness of insulation part including the sheath. Regulations on wire diameters differ from locally to locally. For field wiring rules, please refer to your LOCAL ELECTRICAL CODES before beginning. You must ensure that installation complies with relevant rules and regulations.
- Be careful not to connect cables to other terminals of indoor units (e.g. power source wiring terminal). Malfunction may occur.
- Do not bundle together with the power source wiring or store in the same metal tube. Operation error may occur.
- If noise is induced to the unit power supply, attach a noise filter.

Wiring as shown below is prohibited.



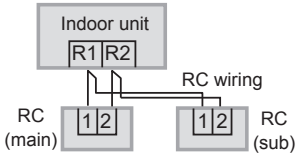
When setting both the main and sub remote controllers

After installation, set one remote controller to [Main] and the other to [Sub] for [Main/sub] for “Setting” (P.11).

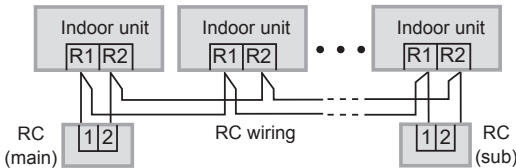
When using the remote controllers* in combination, set this unit to [Main].

*CZ-RTC2, CZ-RTC4, CZ-RE2C2, CZ-RELC2

■ Using 1 indoor unit



■ Using more than 1 indoor unit

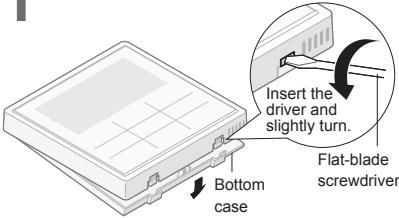


Note

- Remote controllers can be connected to any indoor unit for operation.

Mounting

1 Remove the bottom case.

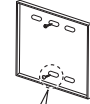


2 Mount to the wall.

Attention

Mounting the bottom case

- Tighten the screws securely until the screw heads touch the bottom case. (Otherwise, loose screw heads may hit the PCB and cause malfunction when mounting the top case.)
- Do not over-tighten the screws. (The bottom case may be deformed, resulting in fall of the unit.)



Connecting the remote control wiring

- Arrange the wires as shown in the illustration for ② in step 2, avoiding unnecessary wires being stored in the remote controller case. (Caught wires may destroy the PCB.)
- Avoid wires touching parts on the PCB. (Caught wires may destroy the PCB.)

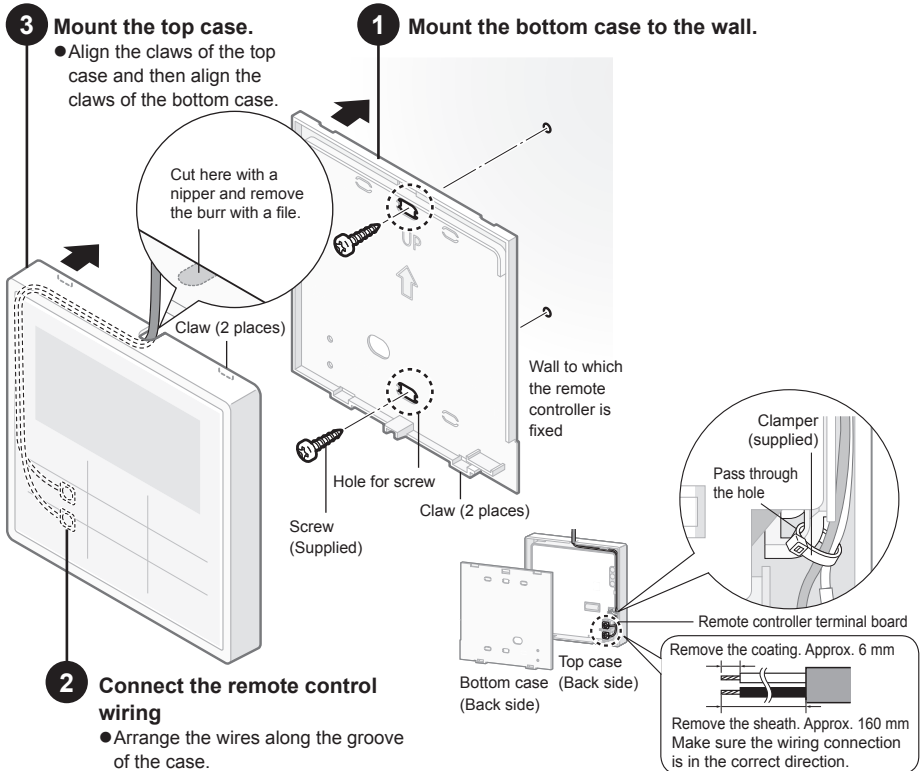
Exposed type

Preparation: Make 2 holes for screws using a driver.

3 Mount the top case.

- Align the claws of the top case and then align the claws of the bottom case.

1 Mount the bottom case to the wall.

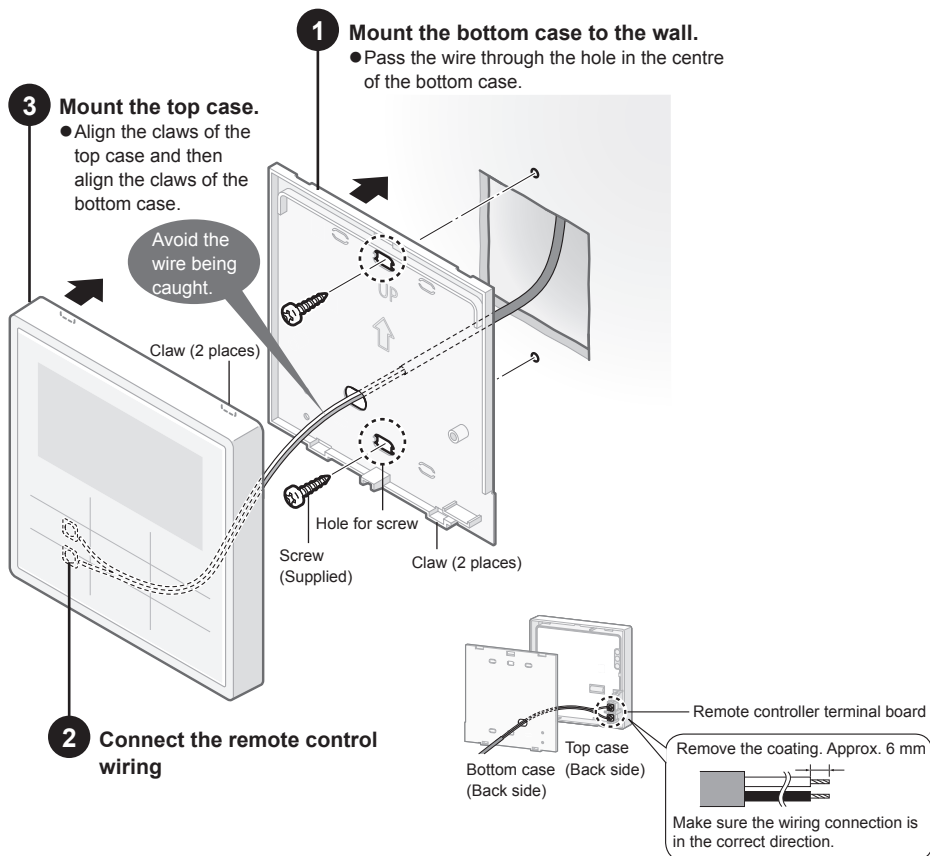


2 Connect the remote control wiring

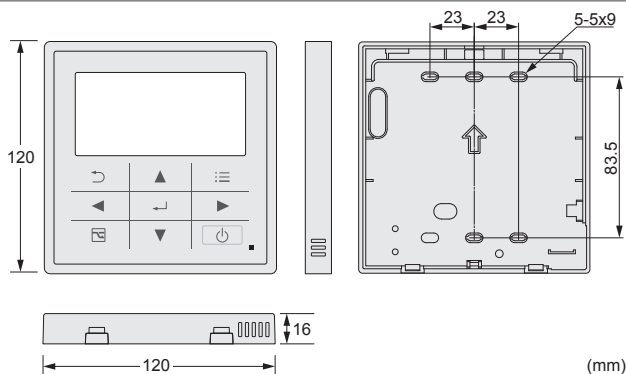
- Arrange the wires along the groove of the case.

Embedded type

Preparation: Make 2 holes for screws using a driver.



Dimensions



Setting

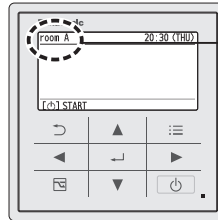
- Language
- Clock
- Controller name

Preparation: Turn on the circuit breaker of units and then turn the power on. The remote controller starts, and wait until the [Assigning] display disappears. (If [Assigning] continues to blink for 10 minutes or more, check the address setting of indoor units.)

Note To return to the previous screen

Press .

1 Press .



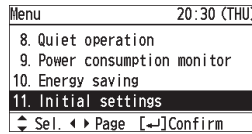
Controller name

2 Select [Initial settings].

▲ ▼ →

3 Select the item to set.

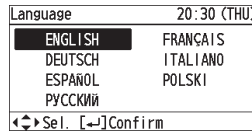
▲ ▼ →



Language

4 Set.

▲ ▼ ◀ ▶ →

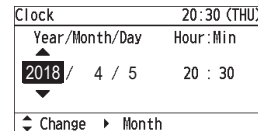


Default setting : English

Clock

4 Set.

▲ ▼ → ▶ →
(Repeat)



Controller name

4 Set.

▲ ▼ ◀ ▶ →

(Repeat the same procedure for all characters.)

■ **To change the character type**

Select the character type with

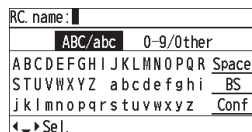
▲ ▼ ◀ ▶ and press .

■ **To enter space**

Select [Space] with ▲ ▼ ◀ ▶ and press .

5 Select [Conf].

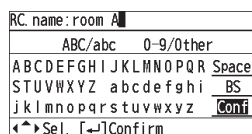
▲ ▼ ◀ ▶ →



• Up to 16 characters (Space is included in the number of characters.)

■ **To delete 1 character**

Select [BS] with ▲ ▼ ◀ ▶ and press .



Setting

■ Service contact

1 Press and hold the 3 buttons for 4 seconds or more simultaneously.



2 Select the item to set.



Maintenance func	20:30 (THU)
1. Outdoor unit error data	
2. Service contact	
3. RC setting mode	
4. Test run	
↕ Sel. ◀ ▶ Page [↵] Confirm	

Service contact

3 Select. (Name)



Service contact	20:30 (THU)
Name	Unset
Contact number	Unset
↕ Sel. [↵] Confirm	

Name

Contact number

4 ▲ ▼ ◀ ▶ → [↵]
(Repeat the same procedure for all characters.)

Name:	
ABC/abc	0-9/Other
ABCDEFGHIJKLMNPQR	Space
STUVWXYZ abcdefghi	BS
klmnopqrstuvwxyz	Conf
◀ ▶ Sel.	

- Up to 16 characters
(Space is included in the number of characters.)

- **To change the character type**
Select the character type with ▲ ▼ ◀ ▶ and press [↵].

- **To enter space**
Select [Space] with ▲ ▼ ◀ ▶ and press [↵].

- **To delete 1 character**
Select [BS] with ▲ ▼ ◀ ▶ and press [↵].

5 Select [Conf].



Name: XXXXXXXXXXXXXXXX	
ABC/abc	0-9/Other
ABCDEFGHIJKLMNPQR	Space
STUVWXYZ abcdefghi	BS
klmnopqrstuvwxyz	Conf
◀ ▶ Sel. [↵] Confirm	

6 Select on the screen for step 3.
(Contact number)



Contact number:	
1 2 3 + -	Space
4 5 6 ()	BS
7 8 9 0 * #	Conf
◀ ▶ Sel. [↵] Enter	

- Up to 16 characters
(Space is included in the number of characters.)

7 ▲ ▼ ◀ ▶ → [↵]
(Repeat the same procedure for all characters.)

Contact number: XXXXXXXXXXXXXXXX	
1 2 3 + -	Space
4 5 6 ()	BS
7 8 9 0 * #	Conf
◀ ▶ Sel. [↵] Confirm	

8 Select [Conf].



Setting

■ RC. setting mode ■ Detailed settings

1 Press and hold the 3 buttons for 4 seconds or more simultaneously.



2 Select the item to set.



Maintenance func	20:30 (THU)
1. Outdoor unit error data	
2. Service contact	
3. RC. setting mode	
4. Test run	
◀ Sel. ▶ Page [↵] Confirm	

RC. setting mode

3 Set.
(Select the Code no. and Set data.)



RC. setting mode		20:30 (THU)
Code no.	Set data	
01	0001	
◀ Sel. ▶ Next		
Code no.	Set data	

4 Press ● After Selecting [YES], the unit restarts.

Code no.

Set data

Code no.	Main/sub	Set data
01	Main/sub	Set this when using 2 remote controllers. • 0000: Sub • 0001: Main (factory setting)
02	Clock type	Set the type of clock display. • 0000: 24 hours • 0001: 12 hours (AM/PM)
2F	Password change	Set the administrator password. • 0000 to 9999 • 0000 (factory setting)
36	Display of operation lock cancelling method	Set whether to display the operation lock cancelling method on the lock screen while operation is locked. (For the lock screen, see the "Part Names" section in the Operating Instructions.) • 0000: Displayed (factory setting) • 0001: Not displayed • 0002: Not displayed (password)

Detailed settings

3 Set.
(Select the indoor unit number, Code no. and Set data.)



Detailed settings			20:30 (THU)
Unit no.	Code no.	Set data	
1-1	10	0001	
◀ Sel. ▶ Next			
Indoor unit number	Code no.	Set data	

4 Press ● After Selecting [YES], the unit restarts.

Code no.

Set data

Code no.	Set data
31	Vent output setting Set this when connecting a commercially sold fan, etc. to the ventilation fan output "FAN DRIVE:2P (White)" on the indoor control board. *Dedicated cables (optional) are required. • 0000: Not connected • 0001: Connected
32	Temp sensor setting Set this when measuring the room temperature with the room temperature sensor of the remote controller. • When using the main and sub controllers, the main one is enabled. • When using with the remote sensor in combination, set the indoor unit setting data. *This setting is not available during group-controlling. • 0000: Indoor unit • 0001: Remote controller
33	Temp display setting Set the type of temperature display. • 0000: °C • 0001: °F

Setting

- Auto address
- Set elec. consumption

Auto address

3 Set.
(Select the Code no. [A1] and O/D unit no.)



(Repeat)

Auto address		20:30 (THU)
Code no.	O/D unit no.	
▲ A1 ▼	1 	
↕ Sel.	▶ Next	
Code no.	O/D unit no.	

4 Press **•** After Selecting [YES], the unit restarts.

Code no.	O/D unit no.
A1	Set the Auto address for each O/D unit no. Select the O/D unit no. (outdoor unit) for Auto address.
	• Outdoor unit number

Attention

- Set Auto address after all units are turned on and 90 seconds or more have passed.
- Operate the units after Auto address is set and 90 seconds or more have passed.

Set elec. consumption

3 Set.
(Select the power supply voltage of outdoor units.)



Set elec. consump.		20:30 (THU)
Set voltage		
▲ 230 ▼	V	
↕ Sel.	[←]	Confirm

4 Select [YES].

Note

- Set the power supply voltage of outdoor units to calculate electric consumption of the Power consumption monitor.
- If the setting differs from the power supply voltage of outdoor units, the electric consumption value of the Power consumption monitor will differ from the actual calculation result by a power meter.
- Depending on the outdoor unit model, this cannot be set.

■ When 3-phase model connections are used for outdoor units

Power supply voltage	Setting value
380 V	220 V
400 V	230 V
415 V	240 V

Confirming Information

- Sensor info.
- Service check

1 Press and hold the 3 buttons for 4 seconds or more simultaneously.



2 Select the item to set.



Maintenance func	20:30 (THU)
2. Service contact	
3. RC setting mode	
4. Test run	
5. Sensor info.	
◀ Sel. ▶ Page [←] Confirm	

Sensor info.

This displays each sensor temperature of the remote controller, indoor units and outdoor units.

3 Select.
(Select the unit number.)



Sensor info.	20:30 (THU)	
Unit no.	Code no.	Data
▲	00	0026
1- 1	01	0028
▼	02	0026
◀ Sel. ▶ Next		

4 Confirm the content.



- Pressing will return to the Maintenance func screen.

Sensor info.	20:30 (THU)	
Unit no.	Code no.	Data
	00	0026
1- 1	01	0028
	02	0026
◀ Scroll		

Service check

This displays the alarm history.

3 Confirm the content.



Service check	20:30 (THU)	
	Unit no.	Alarm
1	1- 1	E04
2	1- 5	F10
3	1- 2	P01
▼ Check [←] Delete		

Information of 4 errors is displayed.

[---] shows that no error has occurred.

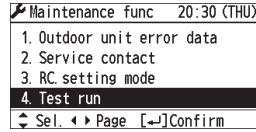
- Pressing will return to the Maintenance func screen.
- To delete the error history, press and select [YES].

Test Operation

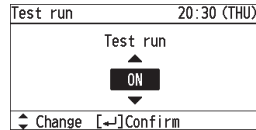
1 Press and hold the 3 buttons for 4 seconds or more simultaneously.



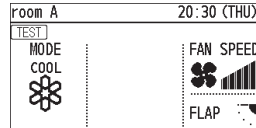
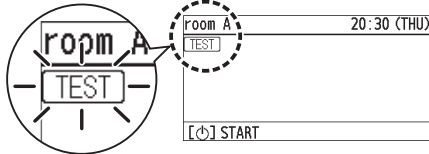
2 Select [Test run].



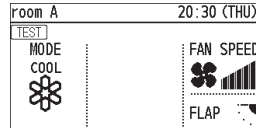
3 Select [ON]. (The unit enters the test operation mode. Then, [TEST] turns on.)



Press .



4 Perform the test operation.



5 Finish the test operation.

Perform step 1 and 2, and then select [OFF] in step 3. ([TEST] display disappears.)

- The test operation can be performed in Heat or Cool mode.
- Temperature cannot be changed.
- The test operation mode is automatically turned off in 60 minutes. (To prevent continuous test operation)
- Outdoor units do not operate for approx. 3 minutes after the power is turned on or operation is stopped.

Attention

- Do not use this mode for purposes other than the test operation. (To prevent overload of the units)
- Read the installation instructions supplied with the units.

