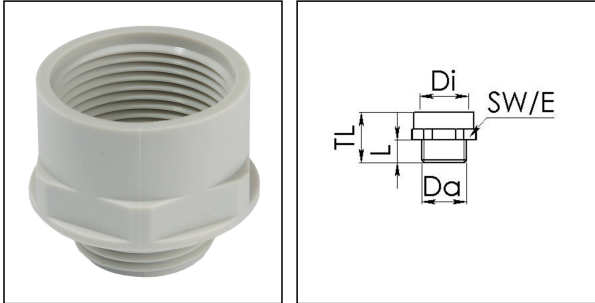


KEM 32/40

Enlargement adaptor, polyamide, RAL 7035, M32 / M40



Products may differ in size, colour and appearance to those shown. If you require further information or customisation, please contact us directly.



Material	Polyamide, fibre reinforced
Temp. range min	-40 °C
Temp. range max	100 °C
Glow wire test	650 °C
Thread type outer	M
Ø outer thread	32
Lead outer	1,5
Length screw-in thread L	12 mm
Thread type inner	M
Ø inner thread	40
Lead inner	1,5
Length internal thread	15,5 mm
Total length TL	30 mm
Key width SW	46 mm
Collar diameter (E)	51 mm
Product Color	RAL 7035
Order no. RAL 7035	10063574
Type	KEM 32/40
Packing unit	50
ETIM-Classification	EC000938

Recommended accessories

EMUG 32	10060774
----------------	----------

Your Contact:

WISKA Hoppmann GmbH

Kisdorfer Weg 28 · 24568 Kaltenkirchen · Germany

☎ +49-4191-508-0 · 📠 +49-4191-508-209



contact@wiska.de · www.wiska.com

27.01.2021

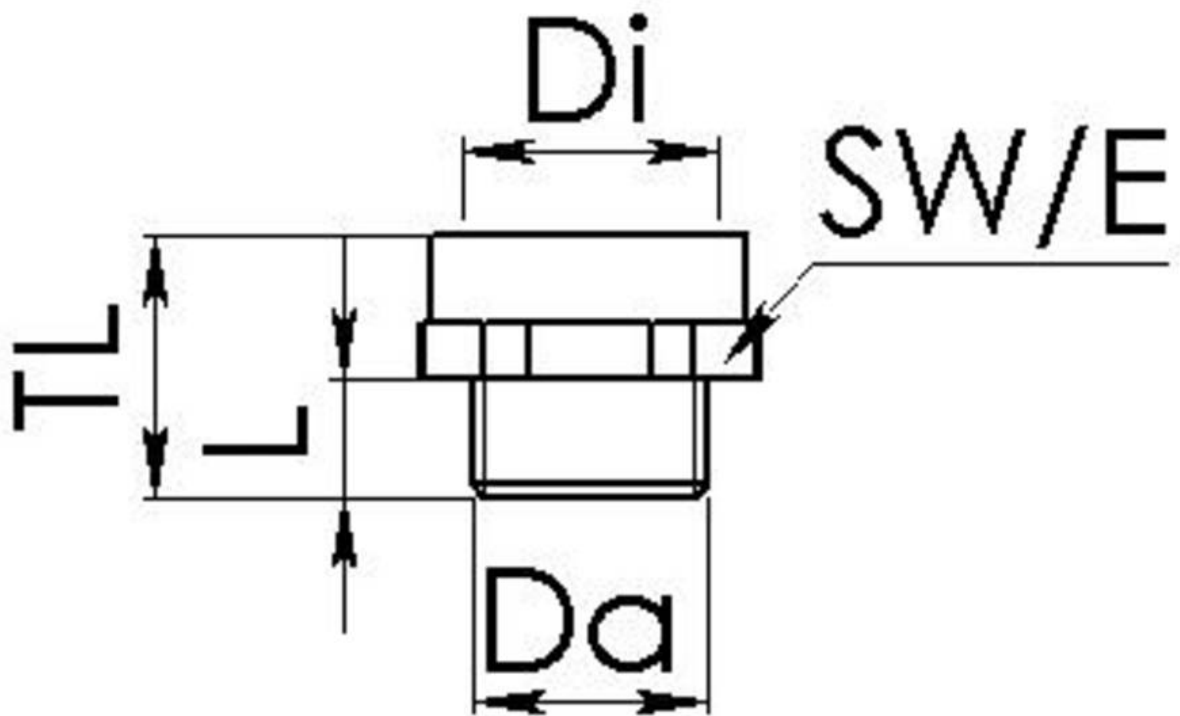
Your Contact:

WISKA Hoppmann GmbH

Kisdorfer Weg 28 · 24568 Kaltenkirchen · Germany

 +49-4191-508-0 ·  +49-4191-508-209

contact@wiska.de · www.wiska.com



Your Contact:

WISKA Hoppmann GmbH

Kisdorfer Weg 28 · 24568 Kaltenkirchen · Germany

☎ +49-4191-508-0 · 📠 +49-4191-508-209

contact@wiska.de · www.wiska.com