

Supply air valve with collar

- Supply air valve for ceiling mounting in offices, houses etc.

The body is equipped with a foam gasket to form an airtight seal with the mounting ring. The valve is equipped with a front plate for direction of the air flow. Adjustment of the valve is achieved by simply rotating the disc and/or front plate to desired setting and secured by means of a single locknut.

Valve material: Steel sheet

Color: White RAL9010

Collar material: Galvanized steel sheet

The measurement of air flow is made by pressure difference measurement with a separate measuring tube. Air flow can be adjusted by changing the adjustment position a (mm) by rotating the front plate.

The air flow formal is:

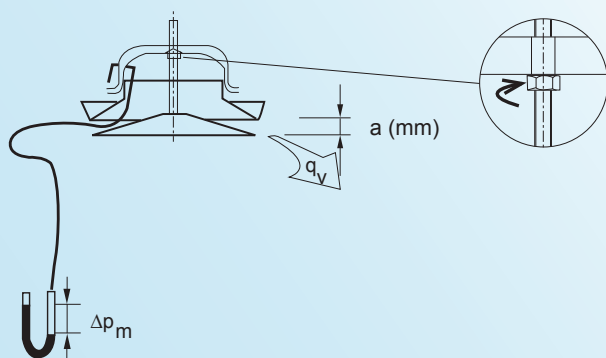
$$q_v = K \sqrt{\Delta P_m}$$

(l/s) (pa)

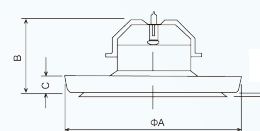
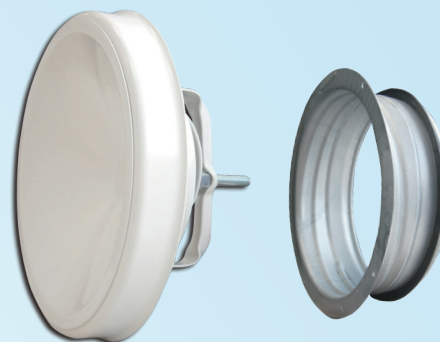
q_v (l/sec): air flow rate

ΔP_m : pressure difference

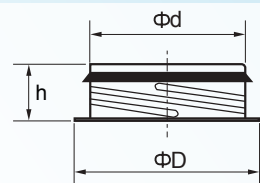
a (mm): different adjustment



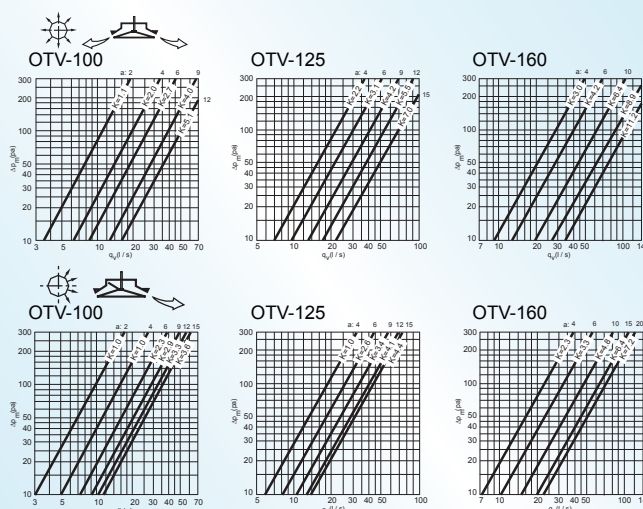
SAP code	Product code	Type
AMA867	E294326	OTV-100
AMA868	E294327	OTV-125
AMA869	E294328	OTV-160



OTV	A(mm)	B(mm)	C(mm)
100	145	67	18
125	175	76	19
160	218	80	20



Size	ΦD	Φd	h
100	125	99	50
125	150	124	50
160	185	159	50



Exhaust air valve with collar

- Exhaust valve is used to prevent spreading of fire and smoke of duct systems.

The body is equipped with a foam gasket to form an airtight seal against the mounting ring.

Valve material: Steel sheet

Color: White RAL9010

Collar material: Galvanized steel sheet

Measurement of air flow is achieved by measuring the pressure difference with a separate measuring tube. Regulation of air flow is achieved by turning the control disc to change adjustment dimension a (mm).

The air flow formal is:

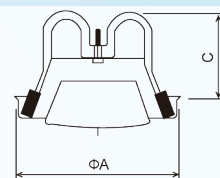
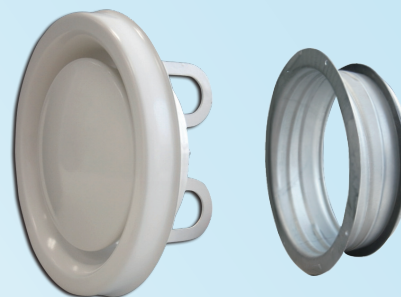
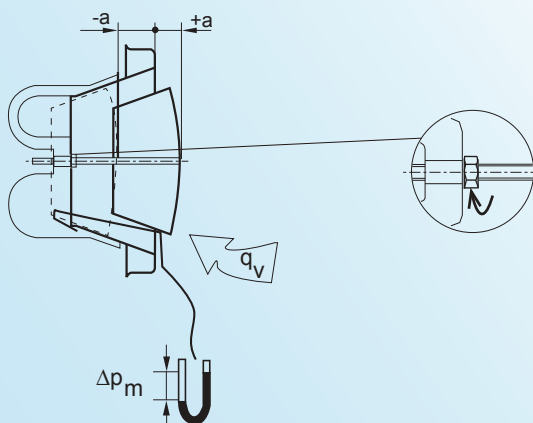
$$q_v = K \sqrt{\Delta P_m}$$

(l/s) (pa)

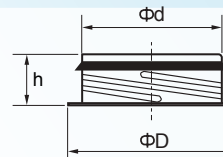
q_v (l/sec): air flow rate

ΔP_m : pressure difference

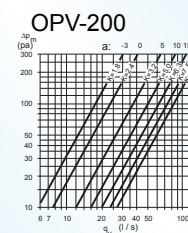
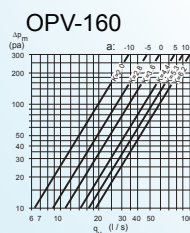
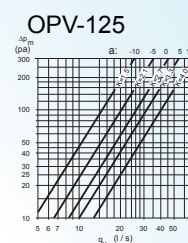
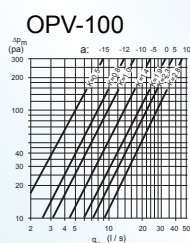
a (mm): different adjustment



OPV	A(mm)	C(mm)
100	136	77
125	162	87
160	193	91
200	243	109



Size	ΦD	Φd	h
100	125	99	50
125	150	124	50
160	185	159	50
200	225	199	50



SAP code	Product code	Type
AMA861	E294320	OPV-100
AMA862	E294321	OPV-125
AMA863	E294322	OPV-160
AMA864	E294323	OPV-200

Exhaust sauna air valve with collar

- Exhaust sauna air valve can be used for sauna room.

Sauna valve can be opened and closed simply by pushing or pulling the wooden knob. Max. opening, which is pre-adjusted into pos. 0mm, can be adjusted by shortening the plastics tube.

Max. working temperature: +120°C

Valve material: Steel sheet

Color: White RAL9010 (power coated)

Collar material: Galvanized steel sheet

The measurement of air flow is made as a pressure difference measurement with a separate measuring tube. Regulation of air volume is made by changing the position a (mm).

The air flow formal is:

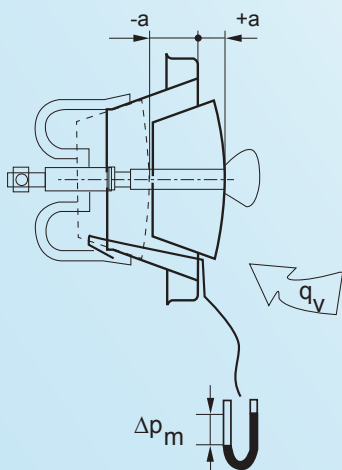
$$q_v = K \sqrt{\Delta P_m}$$

(l/s) (pa)

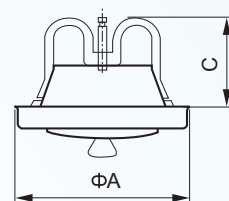
q_v (l/sec): air flow rate

ΔP_m : pressure difference

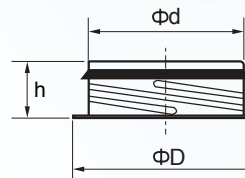
a (mm): different adjustment



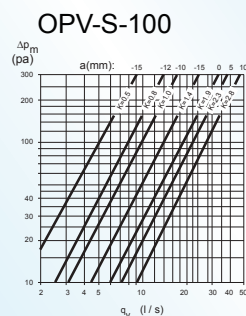
SAP code	Product code	Type
AMA865	E294324	OPV-S-100
AMA866	E294325	OPV-S-125



OPV-S	A(mm)	C(mm)
100	136	77
125	162	87



Size	ΦD	Φd	h
100	125	99	50
125	150	124	50



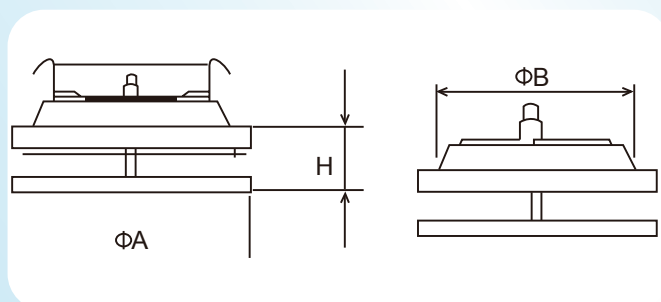
Disc valve

- Disc valve is designed for natural exhaust ventilation. It can also be used as supply and fresh air valves.

Supply airflow shall be directed by angling the front plate. Throw length shall be adjusted by rotating the front plate. Pressure loss shall be selected at the same time as the throw length adjustment and balancing.

Material: Steel sheet

Color: RAL9010 (powder coated)



OLV	H(mm)	A(mm)	B(mm)
80	27-57	108	80
100	27-57	137	100
125	27-57	162	125
160	27-57	193	160
200	27-60	240	200

SAP code	Product code	Type
AEU773	E294280	OLV-80
AEU774	E294281	OLV-100
AEU775	E294282	OLV-125
AEU776	E294283	OLV-160
AEU777	E294284	OLV-200

More information:
Please contact with Own Brand
Sourcing Center ob@onninen.com