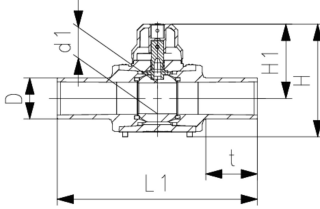


Ball valve



- **PE 100 SDR 11** (ISO S5) - d20 up to d225
- 10 bar Gas / 16 bar Water
- d160 up to d225 are supplied with base plate and straps
- d1 = diameter of bore
- Regarding pressure rate and application local standards and regulations have to be considered
- * In accordance with ANSI B16.40



| d (mm) | Code | Weight (kg) | d1 (mm) | L1 (mm) | H (mm) | H1 (mm) | t (mm) |
|-----------|------------------------|----------------|------------|------------|-----------|------------|-----------|
| 20 | 193 103 206 | 0.487 | 23 | 264 | 144 | 106 | 72 |
| 25 | 193 103 207 | 0.490 | 23 | 264 | 144 | 106 | 72 |
| 32 | 193 103 208 | 0.506 | 23 | 274 | 144 | 106 | 76 |
| 40 | 193 103 209 | 0.616 | 30 | 301 | 152 | 110 | 85 |
| 50 | 193 103 210 | 0.829 | 38 | 327 | 166 | 117 | 92 |
| 63 | 193 103 211 | 1.174 | 48 | 350 | 174 | 115 | 101 |
| 75 | 193 103 212 | 1.434 | 48 | 376 | 183 | 124 | 114 |
| 90 | 193 103 213 | 2.918 | 68 | 439 | 249 | 167 | 128 |
| 110 | 193 103 214 | 4.416 | 83 | 496 | 276 | 180 | 148 |
| 125 | 193 103 040 | 4.220 | 62 | 400 | 280 | 195 | 106 |
| 160 | 193 103 042 | 10.541 | 88 | 450 | 360 | 235 | 116 |
| 180 | 193 103 043 | 10.524 | 88 | 540 | 360 | 235 | 117 |
| 200 | 193 103 044 | 12.023 | 88 | 540 | 360 | 235 | 164 |
| * | 225 193 103 045 | 24.400 | 120 | 880 | 470 | 322 | 240 |

The technical data are not binding. They neither constitute expressly warranted characteristics nor guaranteed properties nor a guaranteed durability. They are subject to modification. Our General Terms of Sale apply.

Georg Fischer Piping Systems Ltd, Postfach, CH-8201 Schaffhausen/Switzerland

Phone +41 -(0)52-631 1111

e-mail: info.ps@georgfischer.com

Internet: <http://www.gfps.com>