



## AVK SUPA MAXI™ STRAIGHT COUPLING, PN16

631/00-001

Universal and tensile, A2 bolts, EPDM sealings

AVK's Supa Maxi™ range of universal tensile couplings sets a new standard. The patented SupaGrip™ sealing support system with flexible bracket ensures full support of the gasket and full tensile strength on all pipe types up to PN16. Supa Maxi™ couplings are easy to install as they offer  $\pm 4^\circ$  angular deflection in each end, lifting eyes, and bolts tightened from the sleeve side with no need for retightening. The permanent protection caps protect the couplings during transport and installation.

### Product description:

Supa Maxi™ straight coupling, universal and tensile with A2 bolts / A4 nuts for drinking water and neutral liquids -20°C to +70°C

### Standards:

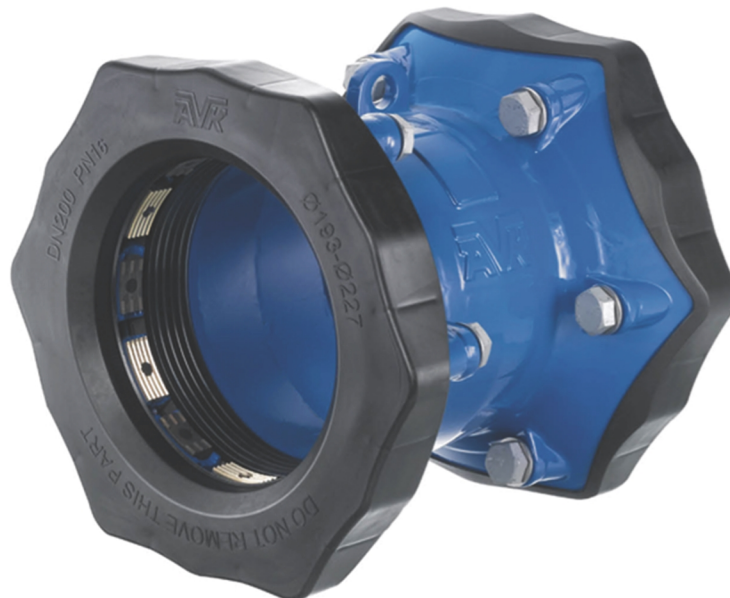
- Designed according to EN 14525

### Test/Approvals:

- Approved according to ACS-France
- Approved according to KIWA Certificate K 66561/02
- Approved according to ÖVGW Certificate W 1.604
- Approved according to SVGW Certificate No. 1205-6041

### Features:

- Patented SupaGrip™ sealing support system with flexible bracket ensures full support of the gasket even at minimum pipe size
- Full tensile strength on all pipes is ensured by two different metal grip segments - every other of gunmetal for PE/PVC and of hardened stainless steel for cast iron/ductile iron/steel/stainless steel/GRP/asbestos cement pipes. For PE pipes a support bush is to be used.
- Metal grip segments are mounted with pins for maximum durability
- $\pm 4^\circ$  angular deflection on each side at max. 1.5 x PN16
- Large tolerance ranges
- All DN's are for PN16 (stainless steel, AC, Bi-PVC, and CFW GRP pipes max. PN10)
- Ductile iron body and bracket of cast steel, epoxy coated according to DIN 30677-2 and GSK approved
- Gasket of drinking water approved EPDM rubber
- Bolts of A2 and nuts of A4 are anti-friction coated to prevent galling
- Permanent protection caps protect the coupling during handling and installation
- The pipe will not move inwards when tightening
- Bolts are tightened from the sleeve side for full access when space is limited
- Re-tightening of bolts is not necessary
- Lifting eye in DN100-600
- DN50-600 are designed for PN16 (1.5 x 16 = 24 bar). DN50-300 are tested and approved for PN16 by KIWA according to EN 14525, and for DN350-600 KIWA EN 14525 approval is pending



kiwa



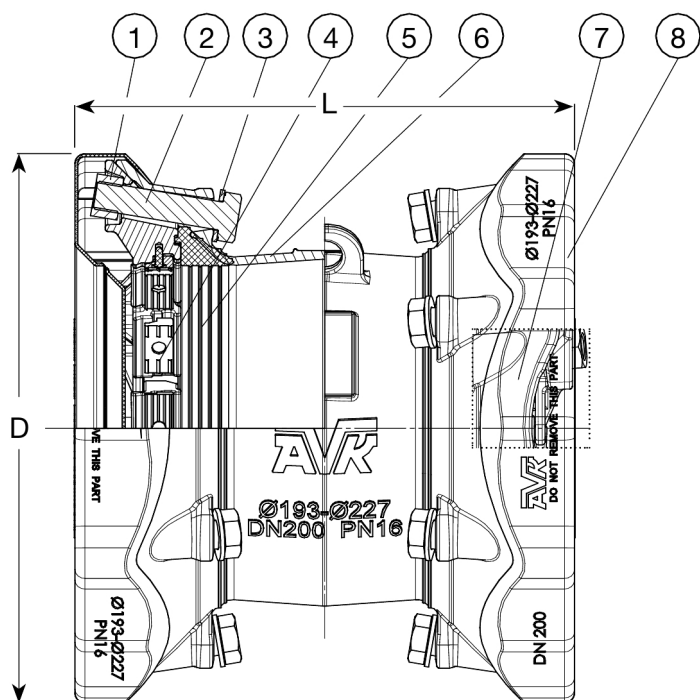
Expect ... **AVR**

The designs, materials and specifications shown are subject to change without notice due to the continuous development of our product range.

# AVK SUPA MAXI™ STRAIGHT COUPLING, PN16

631/00-001

Universal and tensile, A2 bolts, EPDM sealings



DN	
50	3 x M14 x 75 mm
65	3 x M16 x 75 mm
80	3 x M16 x 75 mm
100	4 x M16 x 75 mm
125	4 x M16 x 75 mm
150	4 x M16 x 80 mm
200	6 x M20 x 100 mm
225	6 x M20 x 100 mm
250	6 x M20 x 100 mm
300	8 x M20 x 110 mm
350	9 x M24 x 120 mm
400	10 x M24 x 120 mm
450	12 x M24 x 120 mm
500	14 x M24 x 120 mm
600	18 x M24 x 130 mm

## Component list:

1. Nut	Stainless steel A4	5. Gasket	EPDM rubber
2. Bolt	Stainless steel A2	6. Sleeve	Ductile iron GJS-450-10
3. Washer	Stainless steel A2	7. Bracket	Cast steel
4. Grip segment	Stainless steel / bronze CC491K	8. Protection cap	PE

Components may be substituted with equivalent or higher class materials without prior notification.

## Reference nos. and dimensions:

AVK ref. no.	DN mm	Product PN Class	T mm	L mm	D mm	Theoretical weight / kg
631-071-00-6	50	PN16	48 - 71	255	200	6.0
631-091-00-6	65	PN16	69 - 91	265	226	7.0
631-106-00-6	80	PN16	82 - 106	268	235	7.5
631-133-00-6	100	PN16	104 - 133	289	268	11
631-161-00-6	125	PN16	132 - 159	277	285	13
631-188-00-6	150	PN16	159 - 188	314	340	16
631-227-00-6	200	PN16	193 - 227	354	389	25
631-257-00-6	225	PN16	224 - 257	390	437	37
631-301-00-6	250	PN16	266 - 301	381	476	35
631-356-00-6	300	PN16	314 - 356	438	545	45
631-396-00-6 (1)	350	PN16	352 - 396	513	612	114
631-442-00-6 (1)	400	PN16	392 - 442	526	661	107
631-510-00-6 (2)	450	PN16	448 - 510	767	740	177
631-552-00-6 (2)	500	PN16	498 - 552	769	772	201
631-652-00-6 (2)	600	PN16	604 - 652	767	872	241

(1) KIWA EN 14525 approval is pending

(2) KIWA EN 14525 approval is pending. Protection cap in fabric

The designs, materials and specifications shown are subject to change without notice due to the continuous development of our product range.